

Wastewater Collection System & Private Sewer Lateral Policy



May 6, 2021

Work Session Objectives

Wastewater Collection
System Program Overview |

Sanitary Sewer Overflows
(SSO) & Reduction
Strategies |

Private Sewer
Lateral Policy
Options |



Lake Seminole



PCU Collection System:

1,151
miles of pipeline

23,175
manholes

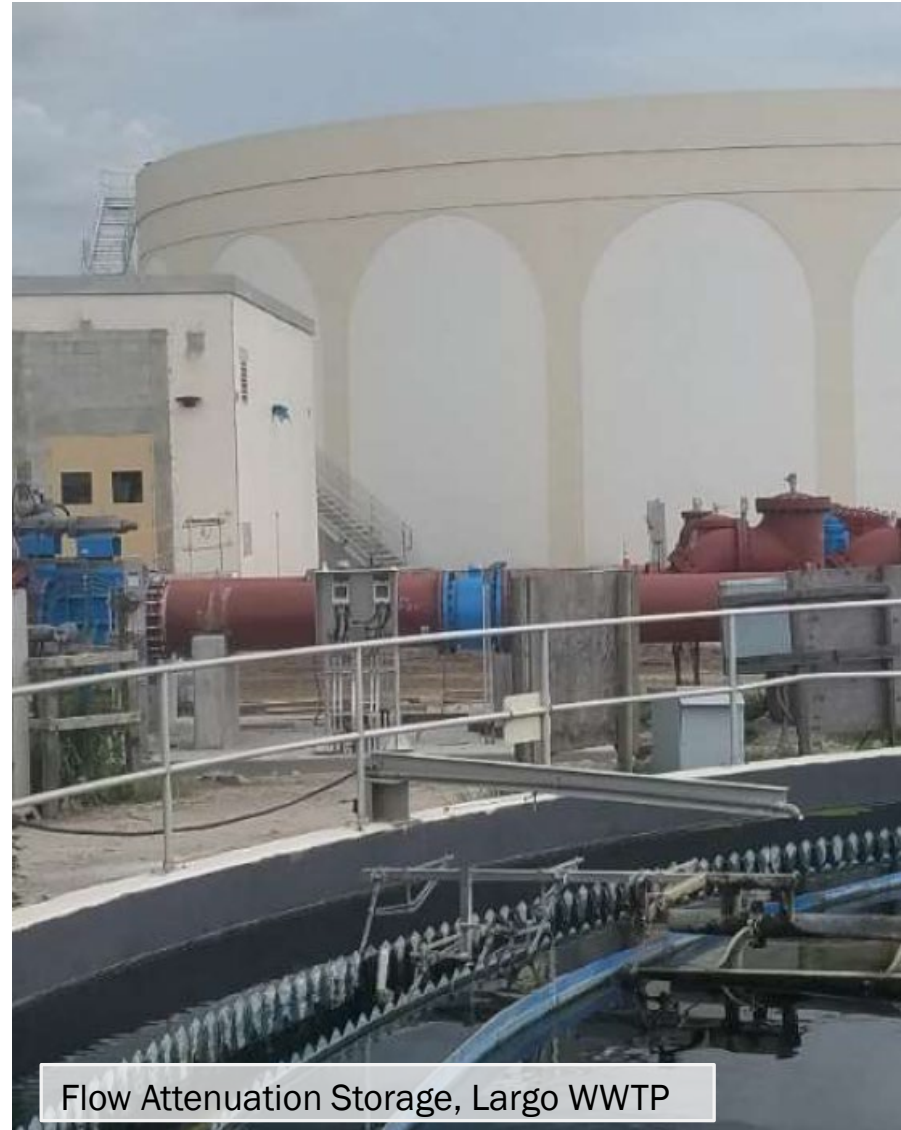
299
pump stations

83,967
private sewer laterals

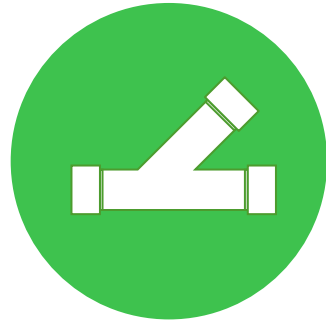


Wade Trim is a Pioneer in Wet Weather Solutions

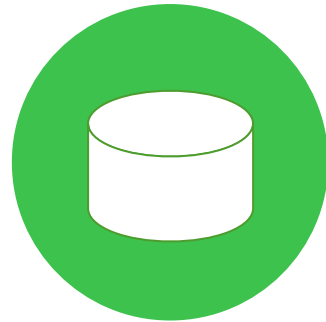
Over 200 Years of Combined Team Experience and Expertise In SSO Elimination Programs



SSO Reduction Strategy



Reduce
Inflow &
Infiltration (I&I)



Address
Capacity
Limitations



Prioritize Capital
Improvement
Program

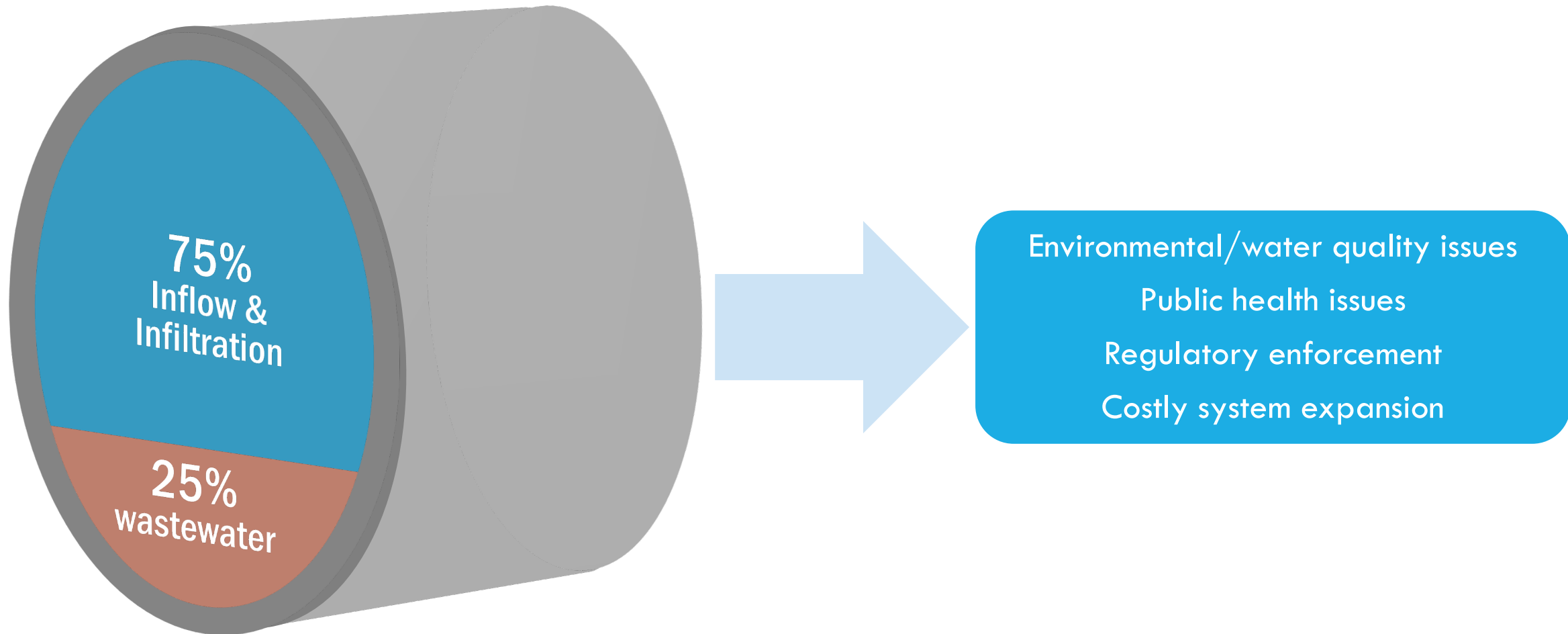


Implement
Private
System Policies

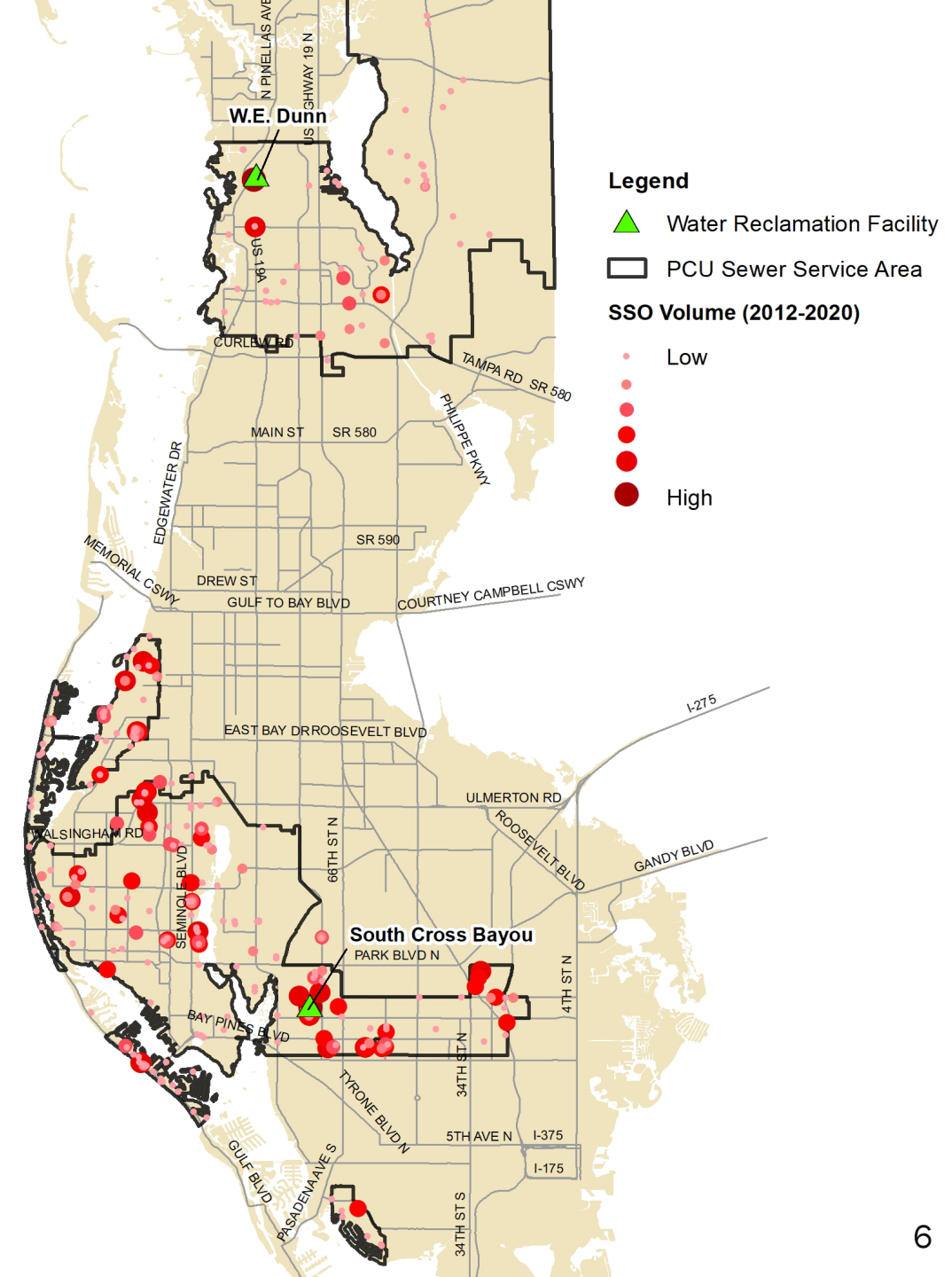
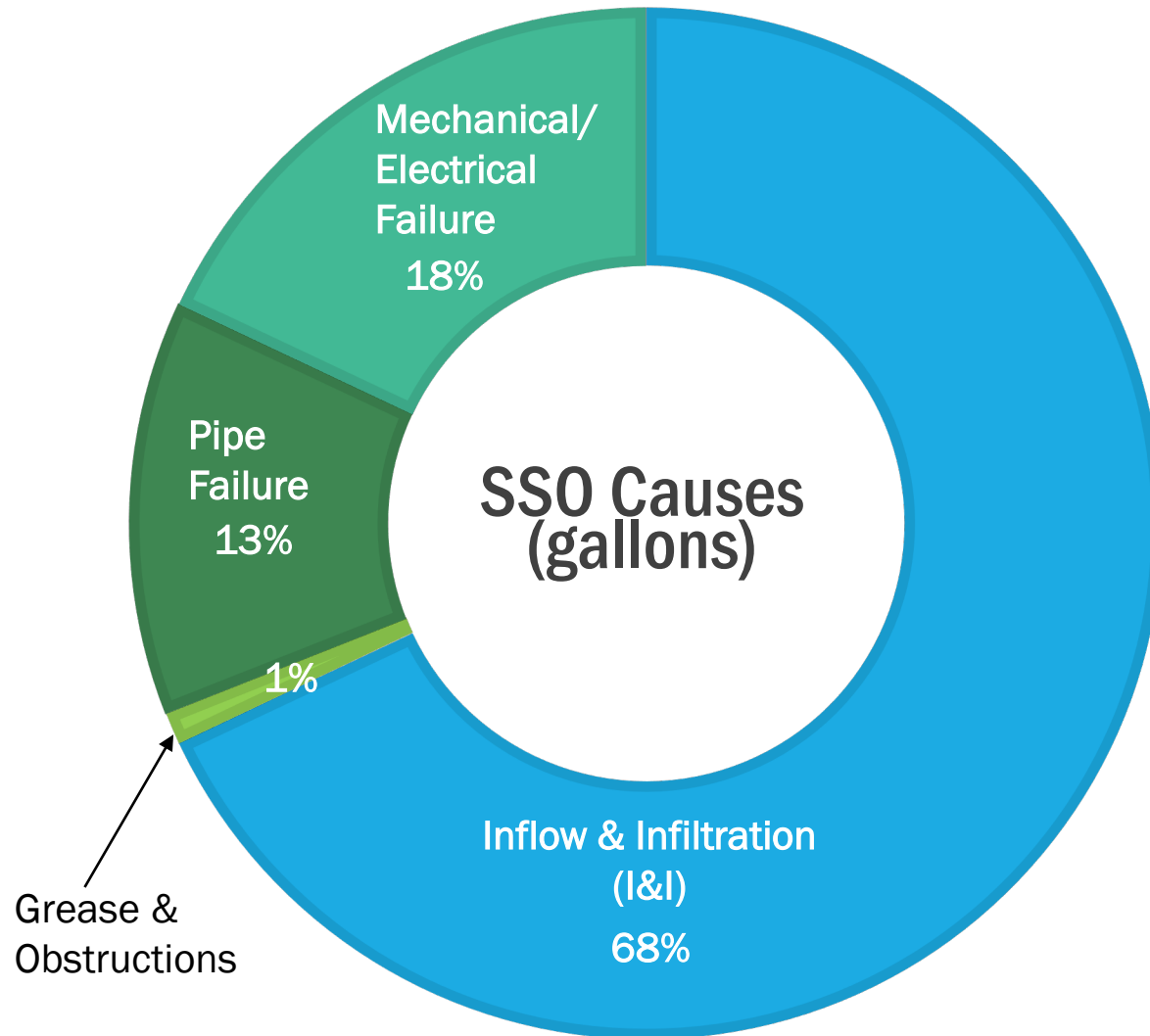
**== Successful SSO Reduction & Elimination Program
Enhances Resiliency and Sustainability for County**

I&I Severely Impacts System Capacity Leading to SSOs

Flow data shows capacity is often overwhelmed during rain events from I&I



Areas of Concern and SSO Causes



Private Sewer Lateral Policy Options



Rebate

Funding available for inspection and/or corrective action



Point of Sale

Inspect as part of home sale process



Permitting

Property improvements requiring building permit prompts inspection and corrective action



Find and Fix

Identify defective laterals for repair in targeted areas

Private Sewer Lateral Policy Options

Key Considerations



Rebate

Incentive-based

County-funded

PCU customers only

Increased public education



Point of Sale

Increases buyer awareness

Countywide

Impacts sales process



Permitting

Integrated into existing process

Requires defined criteria

Adds permitting step and cost



Find and Fix

Cost advantage with County projects

Problem area-focused

PCU customers only

Private property access

Market Research Findings

Private Sewer Laterals



Core Knowledge Gap

Key Barriers – cost, disruption, and fear of the unknown

Rebates are an important tool to reduce cost barriers

Proactive measures appeal to sense of control

Triggering Events – buying a home or facing a sewer backup

Trusted Intermediaries – home inspectors, plumbers, realtors

Reactance - easily provoked

Discussion and Next Steps

Questions and Answers |
Policy Options Discussion |
Conclude and Next Steps |



Rebate



Point of Sale



Permitting



Find and Fix

