

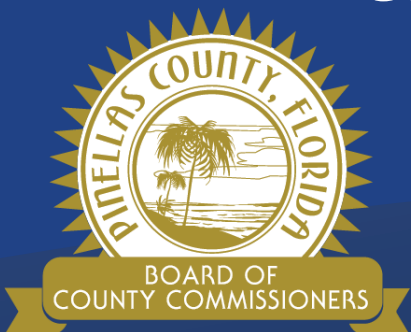
Sustainability & Resiliency 2020 Program Update



County Administration

Hank Hodde, MS, CFM, ENV SP

Sustainability & Resiliency Coordinator



Our Vision: To Be the Standard for Public Service in America



2020 Inaugural Report



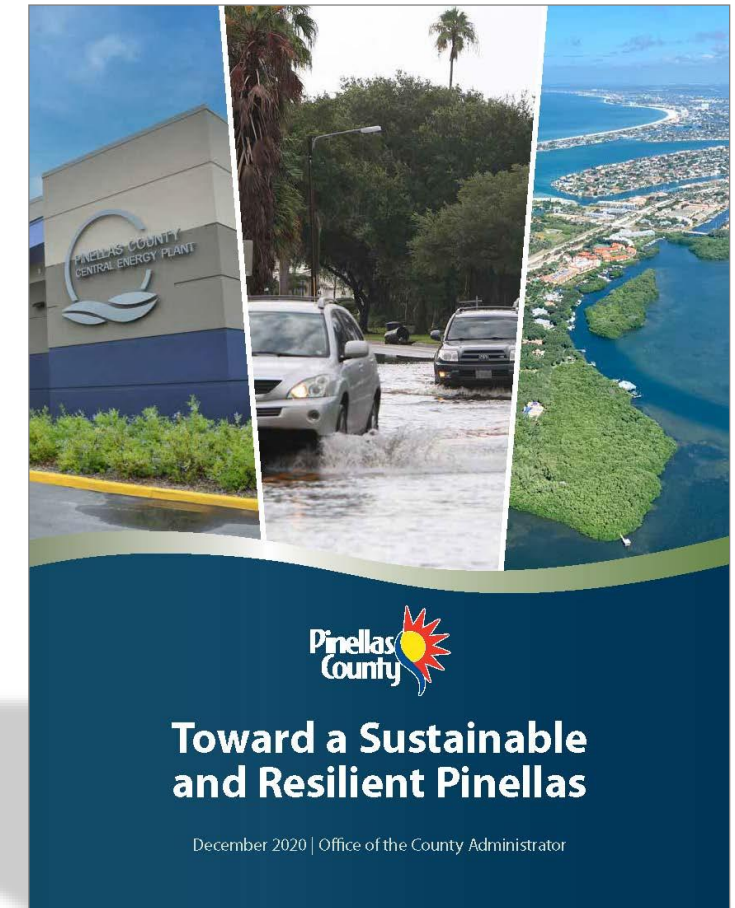
Focuses:

Looking Back
Where Are We Now
Looking Forward

Categories:

Community and Economic Vitality
Environmental Stewardship
Safe and Secure Community
Resilient Infrastructure
Resource Allocation
Leadership and Collaboration

Metrics & Milestones



2020 Program Highlights

- Regional Resiliency Coalition
- Pinellas Sustainability & Resilience Network
- Grants – Proposals and Development
- Duke Clean Energy Connection Program
- Sustainability & Resiliency Action Plan
 - Scope and Consultant Selection
- Program, Policy and Project Inventory



Pinellas County Sustainability & Resiliency Program
www.pinellascounty.org

What we do
We make Pinellas County more sustainable and resilient to current vulnerabilities and future conditions, through internal governmental practices and external community services and impacts.

First-Class Services:

- Address current risks and adapting to a changing climate
- Promote long-term sustainability of local resources
- Collaborate with municipal and community partners
- Reduce our carbon footprint
- Implement green technologies
- Develop new policies, programs, and initiatives that promote sustainability and resiliency

Sustainability
The ability to maintain or improve standards of living without damaging or depleting natural resources for present and future generations.

Resilience
The ability to prepare and plan for, absorb, recover from and more successfully adapt to adverse events.

Did you know?
According to local tidal gauges, the sea level in Pinellas County waterways has risen nearly 1" per decade since 1950.

Program Coordinator
Hank Hodde
Hhodde@pinellascounty.org
315 Court St, Suite 601
Clearwater, FL 33756
(727) 464-5414

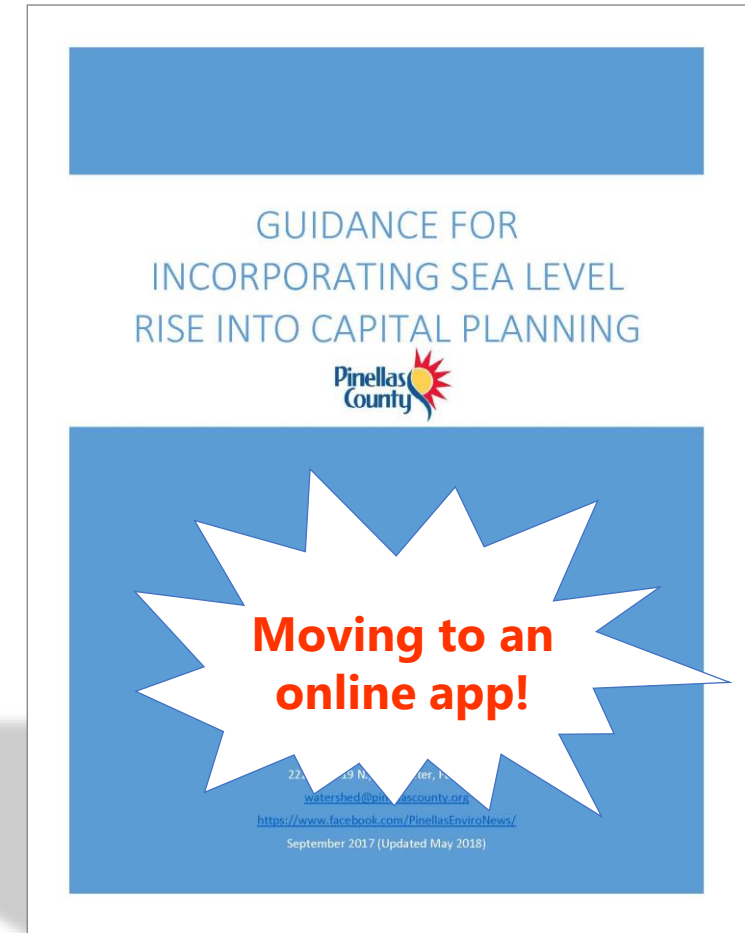
Working for you

- Creating the county's first **Sustainability & Resiliency Action Plan**
- Internal collaboration through our **Leadership Committee & Action Team**
- Conducting a **countywide vulnerability assessment** for tidal and storm surge flooding
- Assessing **sea-level rise** in Capital Improvement Projects
- Member of **Tampa Bay Regional Resiliency Coalition**

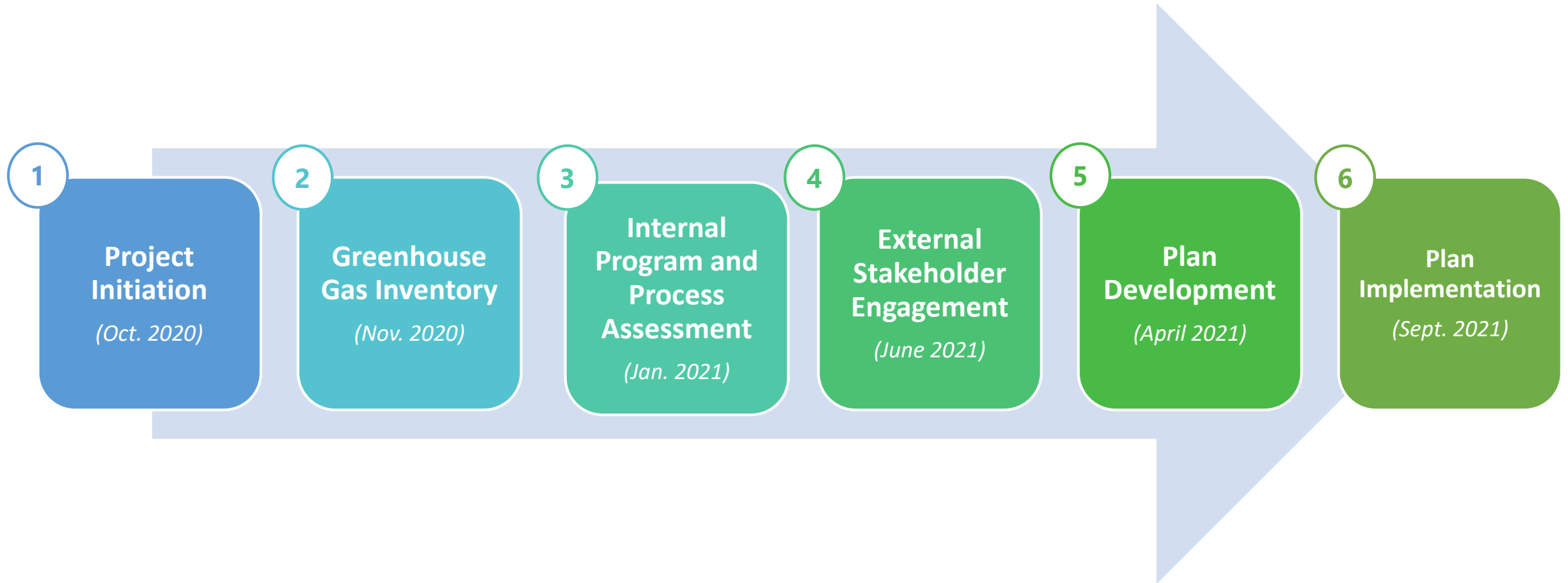
Our Vision:
To Be the Standard for Public Service in America
05-2020

2021 Program Priorities

- Programmatic Capacity
- Duke Clean Energy Connection Program
- Resiliency in Capital Planning
- Regional Partnerships & Projects
- Performance Metrics & Reporting
- Fleet Assessment
- Marketing and Outreach



Sustainability & Resiliency Action Plan (SRAP)



What's Next for the BOCC?



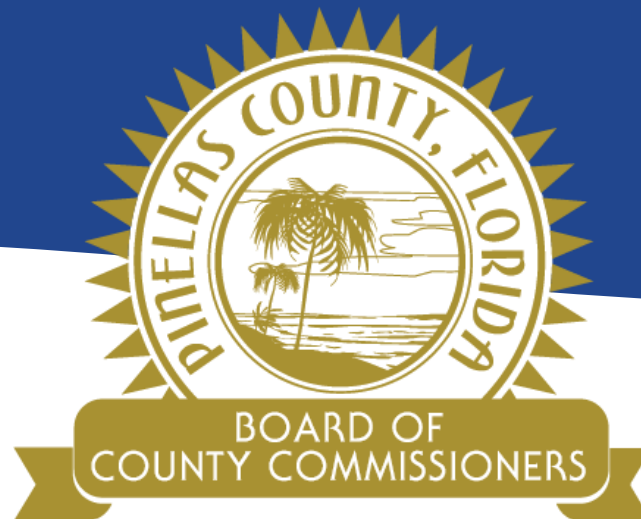
- 1) Receive and distribute the 2020 Inaugural Report**
- 2) Be on the look-out for a new website**
- 3) Provide input in SRAP development**
- 4) Feedback on results from Vulnerability Assessment**

THANK YOU!

Hank Hodde

Sustainability & Resiliency Coordinator

hhodde@pinellascounty.org



Our Vision:

To Be the Standard for
Public Service in America