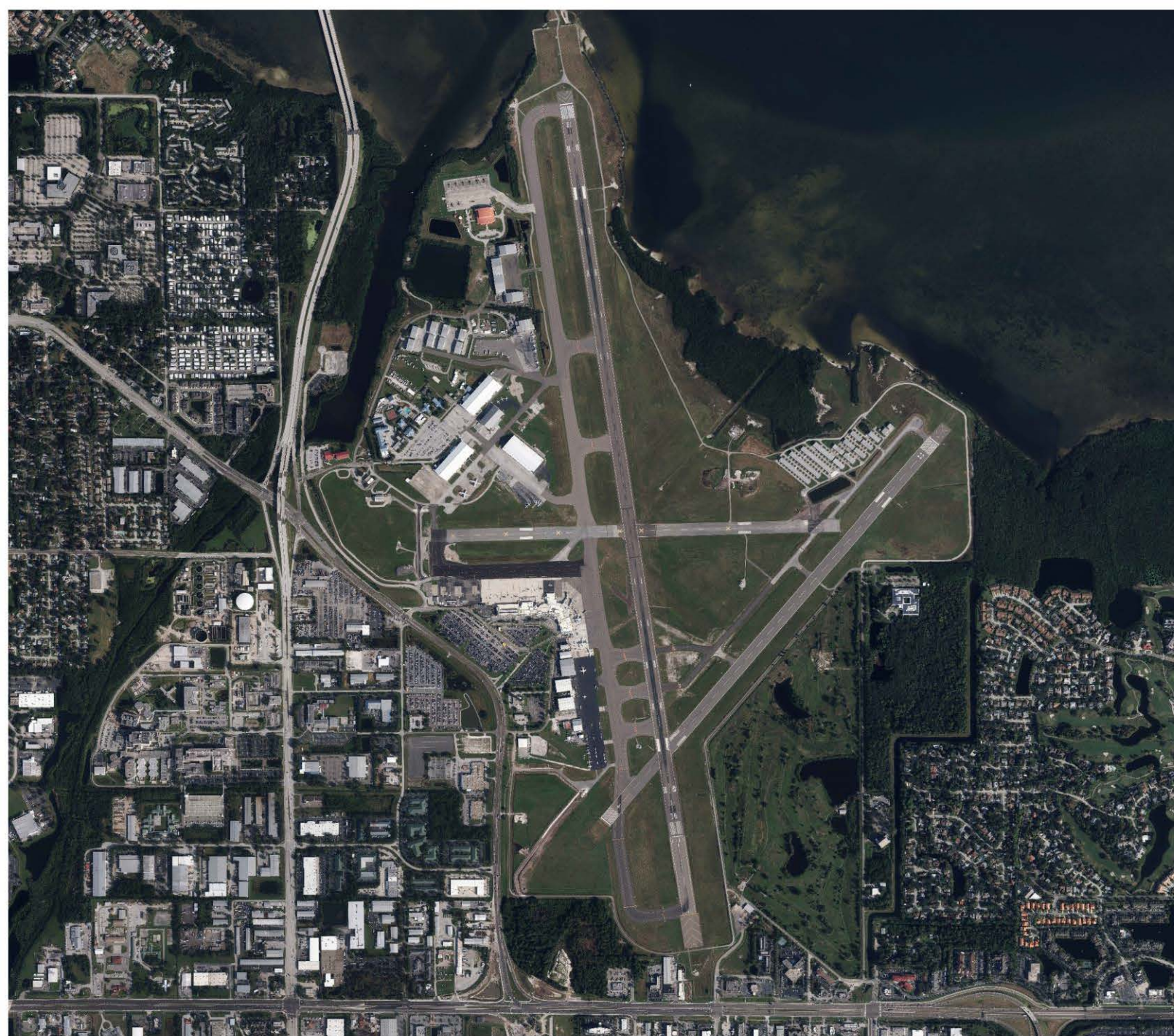


An aerial photograph showing a coastal area. On the left is a dense urban grid. To the right is a large body of water. A long, straight road or runway extends from the urban area towards the water. A red location pin is placed on the runway. The text 'Construction Impacts to PIE Noise Abatement Procedures' is overlaid in the center in white. The text 'St. Pete-Clearwater International Airport' is at the bottom with a red pin.

Construction Impacts to PIE Noise Abatement Procedures

St. Pete-Clearwater International Airport



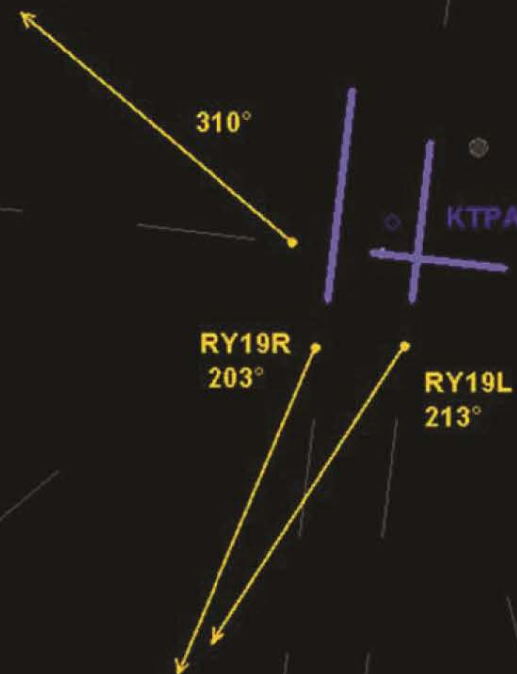
**North/South
Runway 18/36
Closed for
Construction;
(July-Nov. 2020)**

**Northeast/Southwest
Runway 4/22 In-Use;
(July-Nov. 2020)**

PIE Departure Flight Tracks during Runway 18/36 Closure



TPA Departure Flight Tracks



Snapshot of Airline Departures off Runway 4

Track Altitude Color: PIE_05/12/2020 09:09 05/1... X

Track-Altitude Color Mapping

☐ Use Airport Altitude
☐ Alternate Color Scheme
☐ Color By Set
Default Color

Altitude	Color
0	Select
500	Select
1000	Select
1600	Select
3000	Select
10000	Select
12000	Select
15000	Select
20000	Select

Help Ok Apply Cancel

330°

350°

PIE
1.5 NM

KTPA

KPIE

Old Tampa Bay