

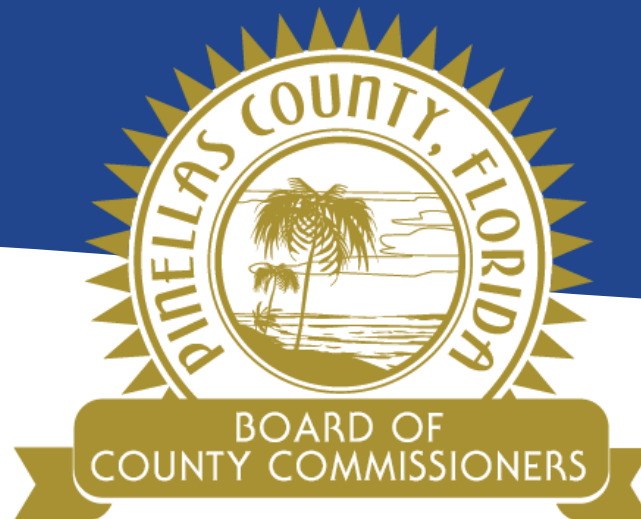


Status Update

Rebecca Stonefield
Principal Planner

Doing Things!
To Serve the Public

August 6, 2020



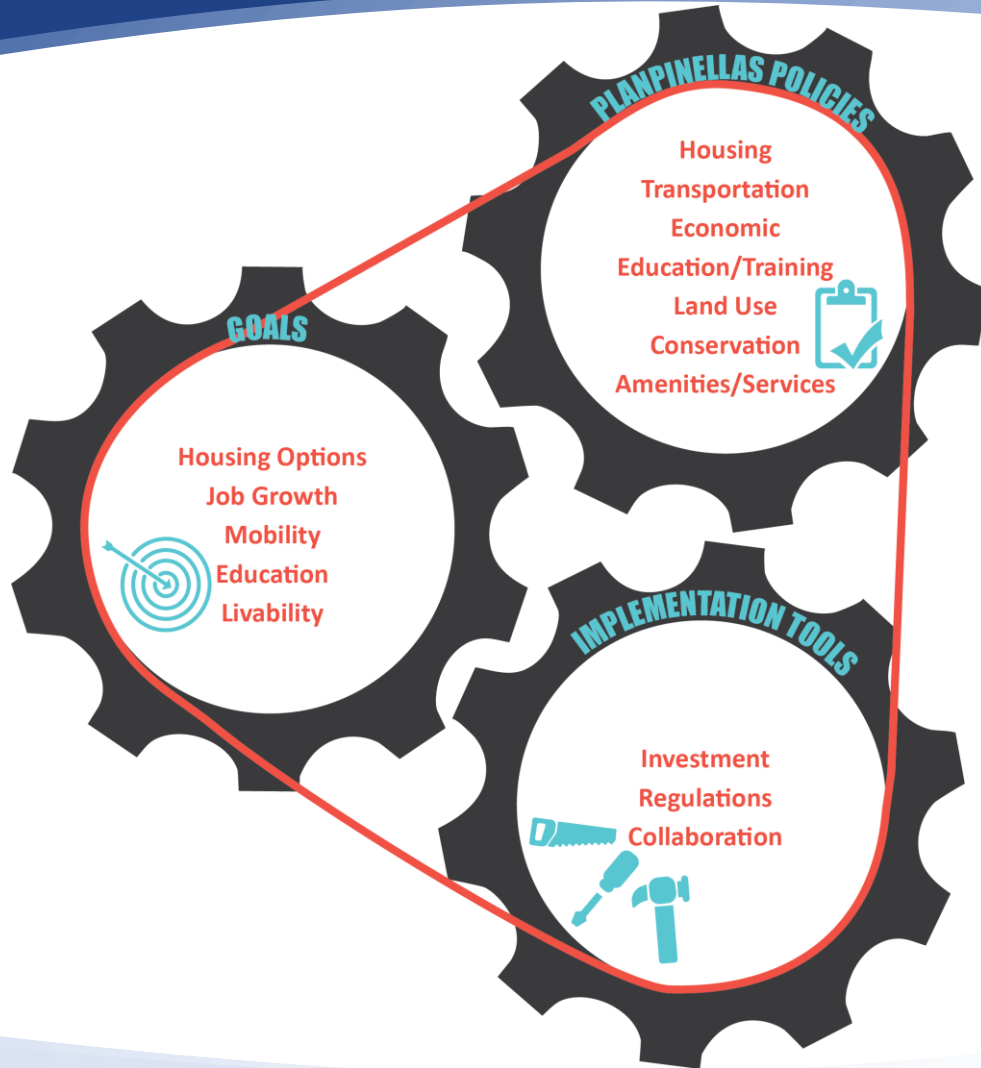
Our Vision:
To Be the Standard for
Public Service in America

Project Drivers



- **Last major update in 2008**
 - Typically occurs every 8-10 years
 - Major change to State law (2011) supports more local control
- **Existing plan outdated**
 - Over 1,100 policies
 - Repetitive language; regulatory; conflicting policies
- **Changing needs**
 - Redevelopment v. new development
 - Population and housing needs
 - Resiliency

Role of PLANPinellas



PLANPinellas establishes the policies that support the methods and tools we use to achieve our goals.

Phased Approach - Foundation

- **Guiding Principles** (January 2017 – June 2018)

- Define community vision
- Streamlined from 47 to 8
- Vetted with County Departments, BCC and Public (3 open houses; 3 library events; 3 speakers series presentations – 100+ total participants; Online Survey – 746 visitors/385 respondents; over 3,000 views of PLANPinellas webpage)



- **Policy Consolidation – Results Neutral** (October 2017 – November 2018)

- Removed repetitive, regulatory, and/or unnecessary language
- Key result – streamlined document, reorganized around Goals/Objectives/Policies/Strategies

Phased Approach – Evaluation and Rewrite

- **Update** (January 2019 – January 2020)
 - Incorporates/strengthens County initiatives (health, equity, age-friendly, affordable housing, redevelopment)
 - Emphasizes interrelationship of issues
 - Supports implementation of Penny IV, transit corridors
 - Will incorporate metrics/performance measures



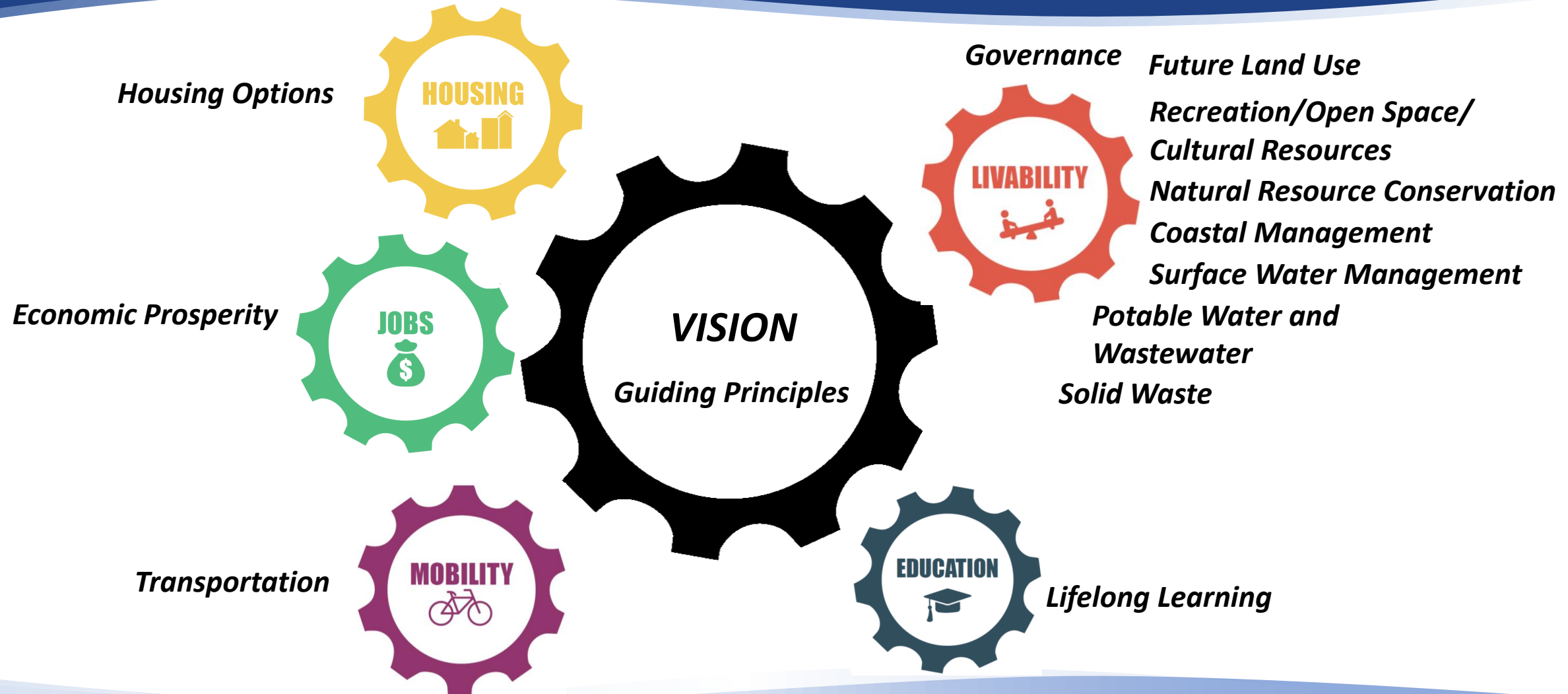
Advances Initiatives



Advances Initiatives



PLANPinellas Chapters



Update Process

1. Starting from Policy Consolidation chapters, the **Implementing Departments...**
2. Based on department review, the **Planning Department...**
3. Then the **Implementing Departments...**
4. Based on department comments, the **Planning Department...**

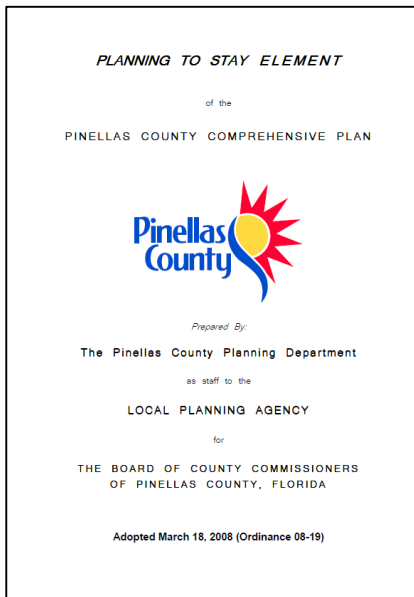
- Reviewed existing chapters
- Identified outdated policies
- Identified new policy needs

- Drafted revised chapters
- Tracked State Statute requirements

- Reviewed drafted chapters
- Provided comments/revisions

- Revised chapters
- Planning review team reviewed draft and made latest revisions

Streamlined Document



- **43** Goals
- **201** Objectives
- **1,134** Policies

Update focuses policies and aligns implementing strategies

Goal – long-term result

Objective – measurable outcome

Policy – standard to advance an objective

Strategy – an action that implements a policy



- **37** Goals
- **103** Objectives
- **305** Policies
- **559** Strategies

*As of July 2020

Key Changes



Housing Options



Economic Prosperity

- Housing Options
 - Expands support for affordable housing funding strategies/programs
- Economic Prosperity
 - Continues to support target industries while expanding equitable commitment to local businesses and workforce
- Transportation
 - Establishes safety as number one priority
 - Stresses multimodal approach, while addressing specific locational needs
- Lifetime Learning
 - Provides new policies to address workforce training



Transportation



Lifetime Learning

Key Changes



Future Land Use

*Recreation/Open Space and
Cultural Resources*

Governance

- Emphasizes relationship of land use with housing, economic development, mobility, the natural environment and placemaking
- Focuses growth in activity centers and corridors to create urban environment that aligns housing, transportation and employment opportunities
- Emphasizes equitable access to facilities
- Expands recognition/protection of historic and cultural resources
- Adds new goal to incorporate health considerations into decision-making

Key Changes



Natural Resource Conservation

Coastal Management

Surface Water Management

- Incorporates/strengthens sustainable practices
- Reorganized around three goals: become model community for water management; regional approach; reduce risk
- Focuses goals to enhance integrity of coastal resources, reduce risk, and ensure sustainable land use
- Implement a Stormwater Manual: innovative techniques; meets performance standards; meets quality/quantity standards; and maintains function under sea level rise conditions

Key Changes



Potable Water and Wastewater

Solid Waste

- Adds policy for sea level rise and strategy to allow for use of alternative water supply sources to meet demand
- Calls for program alignment with Solid Waste Master Plan

Next Steps



3rd Quarter 2020

- Public Outreach
- Final edits
- Finalize supplemental data/analysis and metrics

4th Quarter 2020

- LPA and BCC #1 Public Hearings and Forward Pinellas Consistency Review

1st Quarter 2021

- BCC #2 Public Hearing