



**FORWARD
PINELLAS**
Integrating Land Use & Transportation

Budget Information Session - FY 2019/2020

Pinellas County Board of County Commissioners
May 9, 2019

Who We Are

- Forward Pinellas is an integrated land use and transportation planning agency
- Pinellas Planning Council (PPC)
- Pinellas County Metropolitan Planning Organization (MPO)
- Advisory Committees
 - Citizens Advisory Committee (CAC)
 - Planners Advisory Committee (PAC)
 - Technical Coordinating Committee (TCC)
 - Bicycle Pedestrian Advisory Committee (BPAC)
 - Pinellas Trail Security Task Force (PTSTF)
 - Local Coordinating Board (LCB)
 - School Transportation Safety Committee (STSC)
 - Tampa Bay Transportation Management Area (TMA) Leadership Group



18.0 Full-Time Positions

What We Do

- Maintain the Countywide Plan (Rules, Map, and Strategies)
- Prioritize transportation projects for State and Federal funding
- Administer grant programs
- Provide technical assistance to local governments (special studies and activities)
- Work with the public to develop solutions to complex problems
- Maintain strong relationships with partner agencies/organizations



Forward Pinellas Strategic Business Plan

- Determines “what” and “how” the existing resources and competencies of the agency will be utilized over the next 5 years
- Identifies 7 goals developed around the theme of “Adapt”, “Build” and “Connect”
- “Adapt” - Preparing for change and working with what we have
- “Build” - Building trust and guiding growth
- “Connect” - Working together and creating community



Adapt



- Advantage Pinellas
 - 2045 Long Range Transportation Plan
 - Bicycle Pedestrian Master Plan
 - Pinellas Suncoast Transit Authority (PSTA) Community Bus Plan
 - Future Growth Projections
 - Employment
 - 2015: 534,000
 - 2045: 593,799 (+58,899)
 - Population
 - 2015: 937,325
 - 2045: 1,030,000 (+92,675)



Advantage PINELLAS

ENGAGE. ADAPT. CONNECT.





- Data Analytics to Support Redevelopment Decisions

Community Profile



Building Permit Activity



Redevelopment Potential



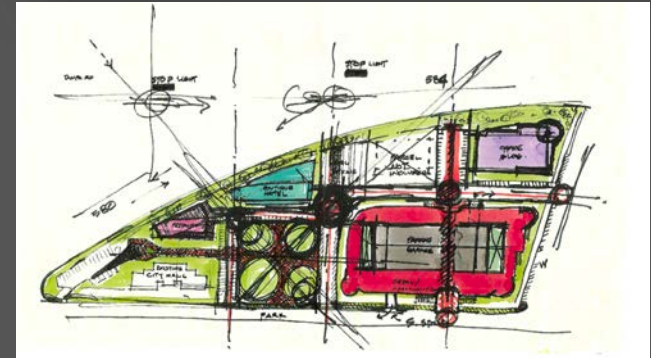
Build

- Alternate US 19 Cultural Corridor Planning
 - Phase I: Issues + Opportunities Summary
 - A community of places and people
 - Documented how Clearwater, Dunedin, Tarpon Springs, Largo, and Palm Harbor are integrating arts and culture into everyday life
 - Summarized 17 issues and opportunities for consideration during the next phase of the planning process
 - Developed 6 guiding principles to inform Phase II work



Build

- Planning & Place-Making (PPM) Pilot Grant Program
 - Incentive to implement the Planning & Urban Design Principles of the Countywide Plan
 - City of Largo: US 19/Roosevelt Blvd. Special Area Plan (\$50,000)
 - City of Oldsmar: Top of the Bay Incubator Feasibility Study (\$25,000)
 - City of Tarpon Springs: Highest & Best Use Analysis (\$25,000)





- Strategic Planning & Operations Topics (SPOTlight Emphasis Areas)
 - Gateway/Mid-County Master Plan
 - Partnership between Forward Pinellas, Pinellas County, Largo, St. Petersburg, Pinellas Park and FDOT



Connect

- Central Avenue Bus Rapid Transit
 - Transit-Oriented Development (TOD) Strategic Plan
 - Partnership between PSTA, Forward Pinellas, St. Pete Beach, South Pasadena and the City of St. Petersburg



FY20 Work Plan Highlights

1. Countywide Plan Administration
2. SPOTlight Emphasis Areas
3. Planning & Place-Making (PPM) Pilot Grant Program
4. Knowledge Exchange Series
5. Alternate US 19 Cultural Corridor Plan
6. Local Government Technical Assistance Services and Data Analytics
 - a. Growth & Redevelopment Visioning Study - Indian Rocks Beach
 - b. Walking Audit - Largo
 - c. Coastal High Hazard Area Mitigation Framework - St. Petersburg & Urban Land Institute (ULI)
 - d. Health in All Policies (HiAP) - Multiple
 - e. Activity Center Indicators - Multiple
 - f. ArcGIS Urban - Pinellas County



Forward Pinellas Revenue Sources

Pinellas Planning Council (PPC)

- Property Tax Revenues
- Intergovernmental Revenue* (MPO reimbursement)
- Interest
- Local Government Technical Assistance Services

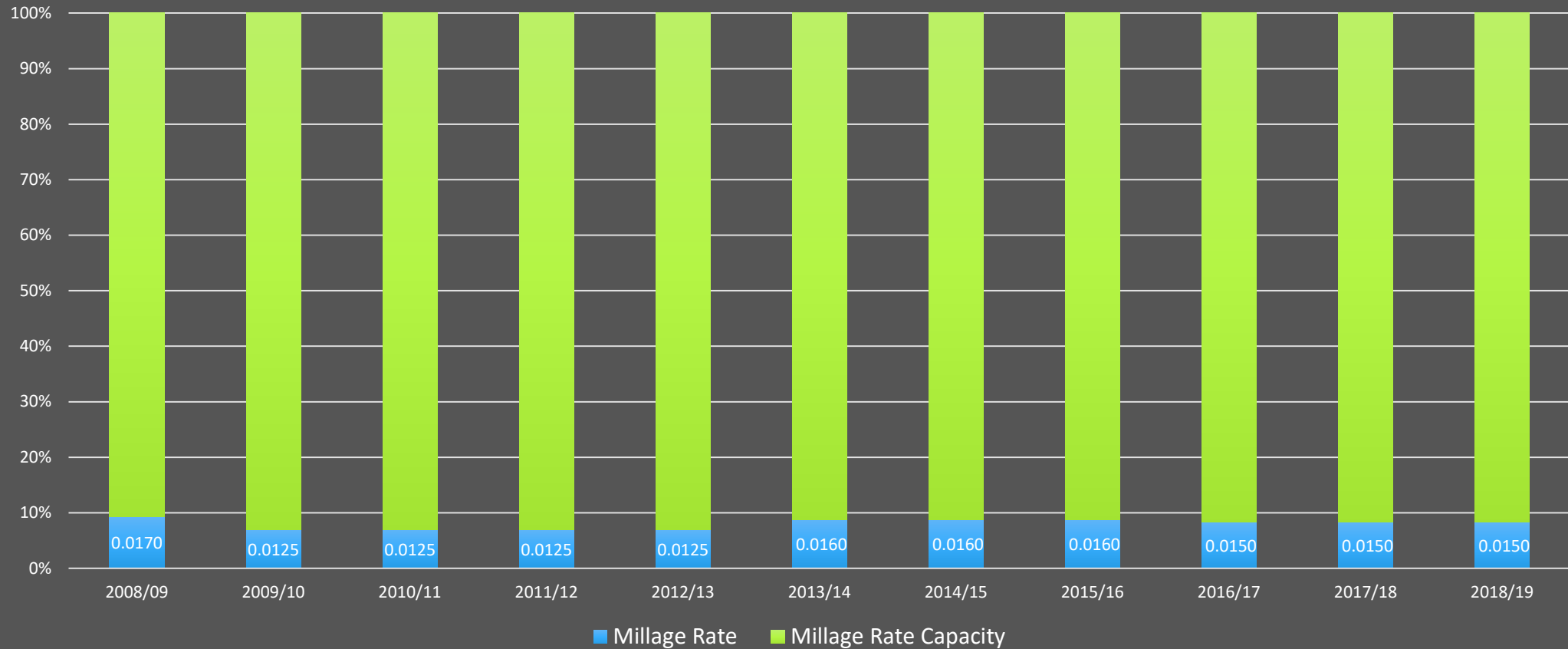
Metropolitan Planning Organization (MPO)

- Federal Highway Planning (PL) Grant Funds
- Federal Highway Surface Transportation (STP) Grant Funds
- Federal Transit Administration Section 5305 Grant Funds
- Commission for the Transportation Disadvantaged Planning Agency Grant Funds

* PPC pays everyone's salaries & fringe/benefits, then invoices the MPO quarterly



PPC Millage Rate and Capacity - 2008/09 thru 2018/19



- PPC millage cap is 0.1666
- PPC millage in 2004 was 0.0220

Thank You!

