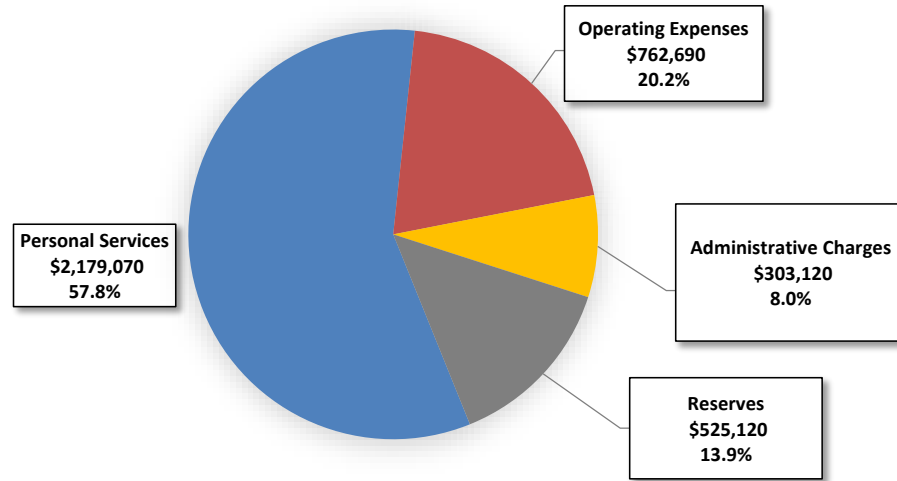
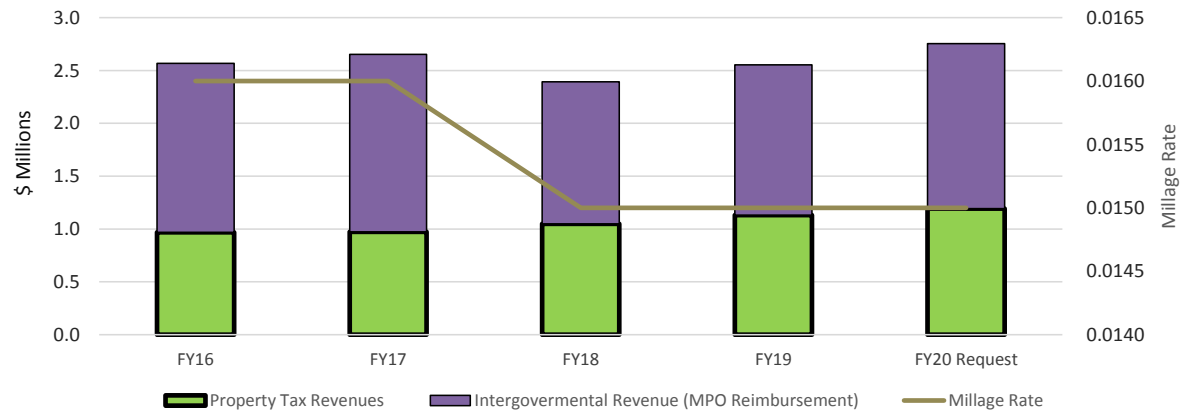




FY20 Budget Request



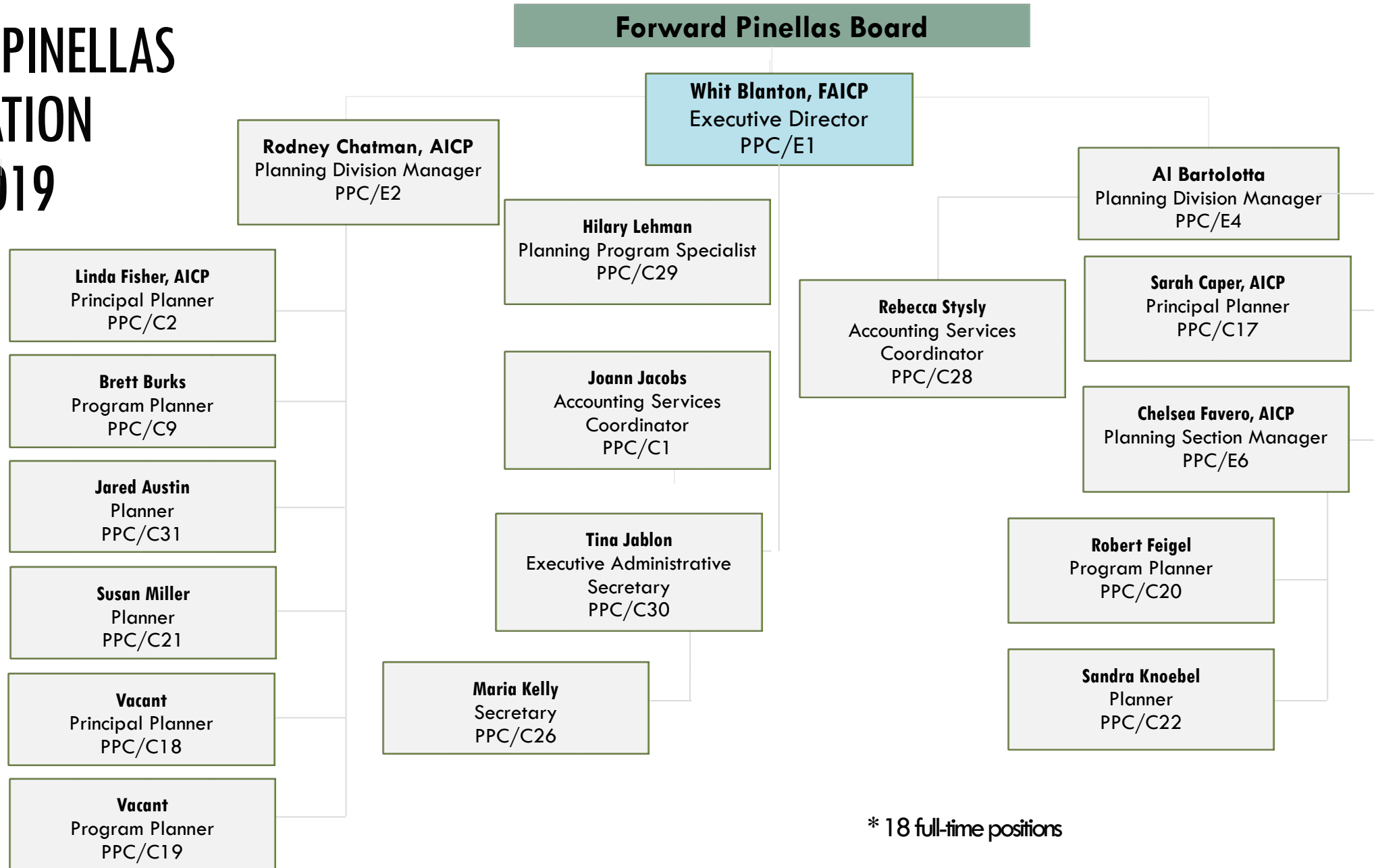
Pinellas Planning Council Budgeted Revenue History



Forward Pinellas is the brand for the unified agency that was formed by the Pinellas County Metropolitan Planning Organization (MPO) merging with the Pinellas Planning Council (PPC). The PPC is a dependent special district that acts as the advisory body to the Countywide Planning Authority. Chapter 88-464, Laws of Florida, states that the Board of County Commissioners has the right to review and adjust the PPC's approved budget and certify its millage. The maximum millage rate that can be levied is 0.1666 mills. The current millage rate 0.015 mills, generating \$1,193,340 in estimated tax revenues for FY20. The PPC is reimbursed by the MPO for staff services and shared operating expenses (\$1,561,260 anticipated in FY20). The PPC is not included in the County's budget; and its financial records, as well as the MPO's are not kept by the Clerk of the Court.

Note: Budget for Interest and Local Assistance Revenues average \$18,000 annually.

FORWARD PINELLAS ORGANIZATION CHART - 2019



* 18 full-time positions