

SKETCH OF DESCRIPTION

PROPOSED VACATING THE NORTH 6.54' OF A 11.54' PRIVATE DRAINAGE, UTILITY & LANDSCAPE EASEMENT, PER O.R.B. 20204, PAGE 2339 OF THE SOUTH PORTION OF LOT 20, ENCLAVE AT PALM HARBOR PLAT BOOK 143, PAGES 14-16 LYING WITHIN SECTION 13, TOWNSHIP 28 SOUTH, RANGE 15 EAST PINELLAS COUNTY, FLORIDA

AREA ABOVE RESERVED FOR RECORDING INFORMATION

DESCRIPTION

THE NORTH 6.54 FEET OF THE 11.54 FEET OF A PRIVATE DRAINAGE, UTILITY AND LANDSCAPE EASEMENT, AS RECORDED IN OFFICIAL RECORDS BOOK 20204, PAGE 2339, LOCATED AT THE SOUTH PORTION OF LOT 20, ENCLAVE AT PALM HARBOR, ACCORDING TO THE PLAT THEREOF, AS RECORDED IN PLAT BOOK 143, PAGE(S) 14 THROUGH 16, OF THE PUBLIC RECORDS OF PINELLAS COUNTY, FLORIDA, LYING WITHIN SECTION 13, TOWNSHIP 28 SOUTH, RANGE 15 EAST, BEING MORE PARTICULARLY DESCRIBED AS FOLLOWS:

COMMENCING AT THE SOUTHEAST CORNER OF SAID LOT 20; THENCE ALONG THE EAST LINE OF SAID LOT 20 RUN NORTH 00°19'03" WEST, A DISTANCE OF 5.00 FEET TO THE POINT OF BEGINNING; THENCE CONTINUE ALONG THE EAST LINE OF SAID LOT 20 NORTH 00°19'03" WEST, A DISTANCE OF 6.54 FEET TO A POINT ON THE NORTH LINE OF THE PRIVATE DRAINAGE, UTILITY AND LANDSCAPE EASEMENT; THENCE DEPARTING SAID EAST LINE, AND ALONG SAID NORTH EASEMENT LINE, RUN NORTH 89°38'41" WEST, A DISTANCE OF 72.62 FEET TO A POINT ON THE EAST LINE OF A 10 FOOT UTILITY EASEMENT, ACCORDING TO THE PLAT OF ENCLAVE AT PALM HARBOR, AS RECORDED IN PLAT BOOK 143, PAGES 14 THROUGH 16, OF THE PUBLIC RECORDS OF PINELLAS COUNTY, FLORIDA; THENCE DEPARTING SAID NORTH EASEMENT LINE AND ALONG SAID EAST LINE, RUN SOUTH 00°19'03" EAST, A DISTANCE OF 6.54 FEET; THENCE DEPARTING SAID EAST LINE, RUN SOUTH 89°38'41" EAST, A DISTANCE OF 72.62 FEET TO THE POINT OF BEGINNING.

CONTAINING 475 SQUARE FEET OR 0.011 ACRES, MORE OR LESS.

Reviewed by: CH SB
 Date: 2-15-19
 SFN# 501-1575

SURVEYOR'S NOTES

1. THE SURVEYOR HAS NOT ABSTRACTED THE LAND SHOWN HEREON FOR EASEMENTS, RIGHT OF WAY, RESTRICTIONS OF RECORD WHICH MAY AFFECT THE TITLE OR USE OF THE LAND
2. NO IMPROVEMENTS HAVE BEEN LOCATED.
3. NOT VALID WITHOUT THE SIGNATURE AND THE ORIGINAL RAISED SEAL OF A FLORIDA LICENSED SURVEYOR AND MAPPER.
4. THIS DOCUMENT CONSISTS OF 2 PAGES NOT FULL OR COMPLETE WITHOUT BOTH.
5. BEARINGS SHOWN HEREON ARE BASED ON SOUTH LINE OF LOT 20, WHICH BEARS NORTH 89°38'41" WEST, PER PLAT BOOK 143, PAGES 14-16.

THIS SKETCH IS NOT A SURVEY.

SHEET 1 OF 2
 SEE SHEET 2 OF 2 FOR SKETCH

SKETCH OF DESCRIPTION

PROPOSED VACATING THE NORTH 6.54' OF 11.54' PRIVATE DRAINAGE, UTILITY & LANDSCAPE EASEMENT LOCATED AT THE SOUTH PORTION OF LOT 20, ENCLAVE AT PALM HARBOR PLAT BOOK 143, PAGES 14-16 LYING WITHIN SECTION 13, TOWNSHIP 28 SOUTH, RANGE 15 EAST PINELLAS COUNTY, FLORIDA



AMERICAN SURVEYING & MAPPING INC.

CERTIFICATION OF AUTHORIZATION NUMBER LB#6393
 3191 MAGUIRE BOULEVARD, SUITE 200
 ORLANDO, FLORIDA 32803
 (407) 428-7979
 WWW.AMERICANSURVEYINGANDMAPPING.COM

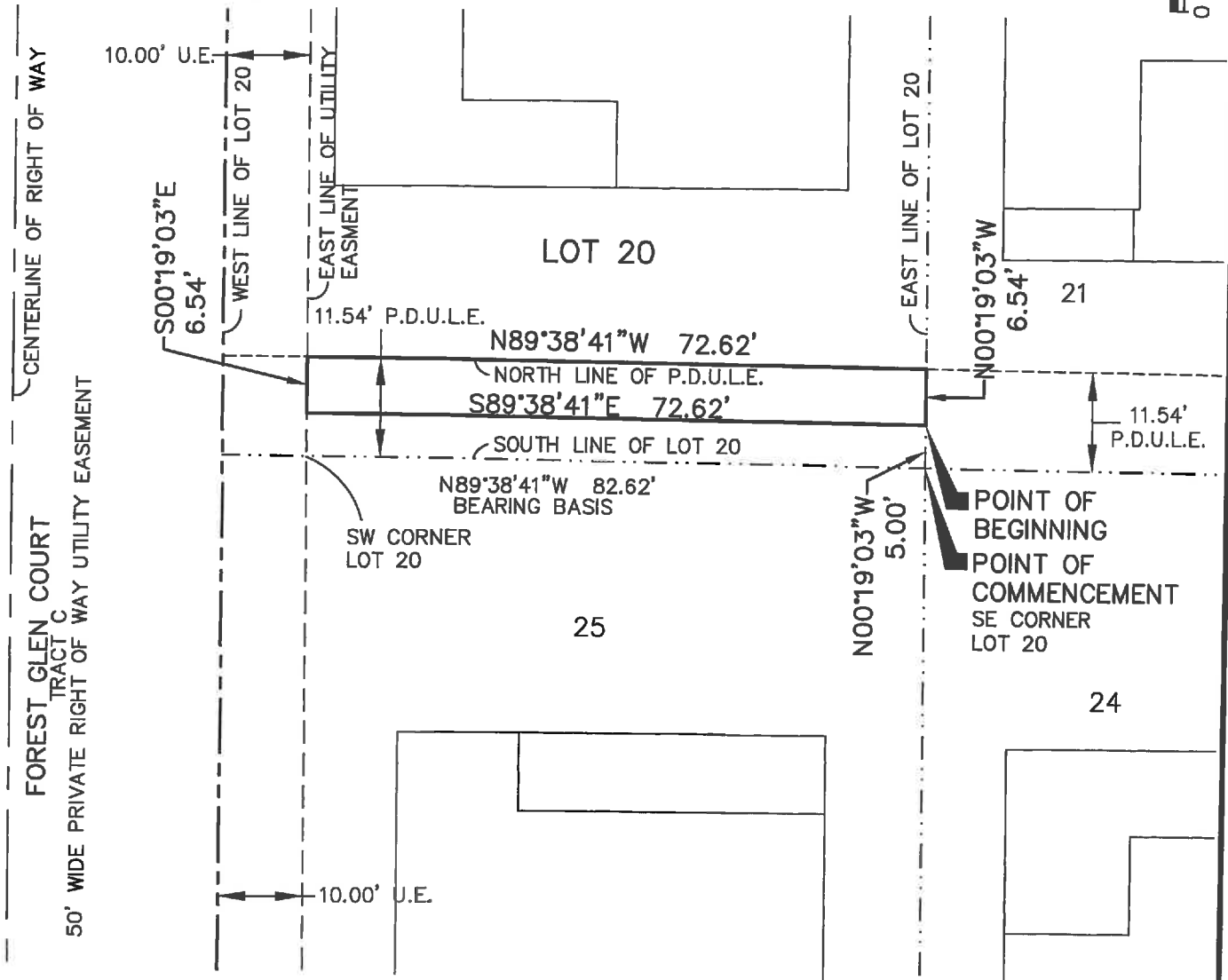
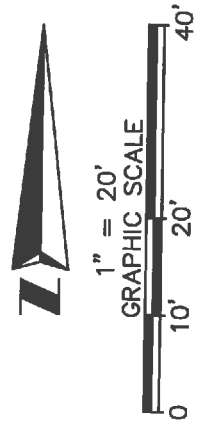
I HEREBY CERTIFY THAT THIS SKETCH OF DESCRIPTION, SUBJECT TO THE SURVEYOR'S NOTES CONTAINED HEREON, MEETS THE APPLICABLE "STANDARDS OF PRACTICE" AS SET FORTH BY THE FLORIDA BOARD OF PROFESSIONAL SURVEYORS AND MAPPERS IN CHAPTER 5J-17, FLORIDA ADMINISTRATIVE CODE, PURSUANT TO SECTION 472.027, FLORIDA STATUTES.

James W. Boleman
 JAMES W. BOLEMAN, PSM #6485

DATE: 02/13/19

| JOB NO.: | DATE | REVISIONS | TECH |
|-------------------|------|-----------|------|
| 180222 | | | |
| SCALE: 1" = 20' | | | |
| DATE: 01/25/19 | . | . | . |
| DRAWN BY: GHF | . | . | . |
| APPROVED BY: XX | . | . | . |
| DRAWING FILE # | . | . | . |
| 180222 LOTS 20-25 | . | . | . |
| ESMT SOD.DWG | . | . | . |

SKETCH OF DESCRIPTION
 PROPOSED VACATING THE NORTH 6.54' OF A 11.54' PRIVATE
 DRAINAGE, UTILITY & LANDSCAPE EASEMENT,
 PER O.R.B. 20204, PAGE 2339
 OF THE SOUTH PORTION OF LOT 20, ENCLAVE AT PALM HARBOR
 PLAT BOOK 143, PAGES 14-16
 LYING WITHIN SECTION 13, TOWNSHIP 28 SOUTH, RANGE 15 EAST
 PINELLAS COUNTY, FLORIDA



THIS SKETCH IS NOT A SURVEY.

SHEET 2 OF 2 - NOT FULL OR COMPLETE WITHOUT ALL SHEETS.
 SEE SHEET 1 OF 2 FOR DESCRIPTION, NOTES, AND CERTIFICATION.

LEGEND AND ABBREVIATIONS

- SW SOUTHWEST
- SE SOUTHEAST
- U.E. UTILITY EASEMENT
- P.D.U.L.E. PRIVATE DRAINAGE, UTILITY AND LANDSCAPE EASEMENT
- O.R.B. OFFICIAL RECORDS BOOK
- PG PAGE



**AMERICAN
 SURVEYING
 & MAPPING INC.**

CERTIFICATION OF AUTHORIZATION NUMBER LB#8393
 3191 MAGUIRE BOULEVARD, SUITE 200
 ORLANDO, FLORIDA 32803
 (407) 428-7979
 WWW.AMERICANSURVEYINGANDMAPPING.COM

SKETCH OF DESCRIPTION

PROPOSED VACATING THE NORTH 6.54' OF A 11.54' PRIVATE DRAINAGE, UTILITY & LANDSCAPE EASEMENT, PER O.R.B. 20204, PAGE 2339 OF THE SOUTH PORTION OF LOT 21, ENCLAVE AT PALM HARBOR PLAT BOOK 143, PAGES 14-16 LYING WITHIN SECTION 13, TOWNSHIP 28 SOUTH, RANGE 15 EAST PINELLAS COUNTY, FLORIDA

AREA ABOVE RESERVED FOR RECORDING INFORMATION

DESCRIPTION

THE NORTH 6.54 FEET OF THE 11.54 FEET OF A PRIVATE DRAINAGE, UTILITY AND LANDSCAPE EASEMENT, AS RECORDED IN OFFICIAL RECORDS BOOK 20204, PAGE 2339, LOCATED AT THE SOUTH PORTION OF LOT 21, ENCLAVE AT PALM HARBOR, ACCORDING TO THE PLAT THEREOF, AS RECORDED IN PLAT BOOK 143, PAGES 14 THROUGH 16, OF THE PUBLIC RECORDS OF PINELLAS COUNTY, FLORIDA, LYING WITHIN SECTION 13, TOWNSHIP 28 SOUTH, RANGE 15 EAST, BEING MORE PARTICULARLY DESCRIBED AS FOLLOWS:

COMMENCING AT THE SOUTHWEST CORNER OF SAID LOT 21; THENCE ALONG THE WEST LINE OF SAID LOT 21 RUN NORTH 00°19'03" WEST, A DISTANCE OF 5.00 FEET TO THE POINT OF BEGINNING; THENCE CONTINUE ALONG THE WEST LINE OF SAID LOT 20 NORTH 00°19'03" WEST, A DISTANCE OF 6.54 FEET TO A POINT ON THE NORTH LINE OF THE PRIVATE DRAINAGE, UTILITY AND LANDSCAPE EASEMENT; THENCE DEPARTING SAID WEST LINE, AND ALONG SAID NORTH EASEMENT LINE, RUN SOUTH 89°38'41" EAST, A DISTANCE OF 80.01 FEET TO A POINT ON THE EAST LINE OF SAID LOT 21; THENCE DEPARTING SAID NORTH EASEMENT LINE AND ALONG SAID EAST LINE, RUN SOUTH 00°19'03" EAST, A DISTANCE OF 6.54 FEET; THENCE DEPARTING EAST LINE SAID LOT 21 RUN NORTH 89°38'41" WEST, A DISTANCE OF 80.01 FEET TO THE POINT OF BEGINNING.

CONTAINING 523 SQUARE FEET OR 0.012 ACRES, MORE OR LESS.

Reviewed by: CH SB
 Date: 2-15-19
 SFN # 501-1575

SURVEYOR'S NOTES

1. THE SURVEYOR HAS NOT ABSTRACTED THE LAND SHOWN HEREON FOR EASEMENTS, RIGHT OF WAY, RESTRICTIONS OF RECORD WHICH MAY AFFECT THE TITLE OR USE OF THE LAND
2. NO IMPROVEMENTS HAVE BEEN LOCATED.
3. NOT VALID WITHOUT THE SIGNATURE AND THE ORIGINAL RAISED SEAL OF A FLORIDA LICENSED SURVEYOR AND MAPPER.
4. THIS DOCUMENT CONSISTS OF 2 PAGES NOT FULL OR COMPLETE WITHOUT BOTH.
5. BEARINGS SHOWN HEREON ARE BASED ON SOUTH LINE OF LOT 21, WHICH BEARS NORTH 89°38'41" WEST, PER PLAT BOOK 143, PAGES 14-16.

THIS SKETCH IS NOT A SURVEY.

SHEET 1 OF 2
 SEE SHEET 2 OF 2 FOR SKETCH

SKETCH OF DESCRIPTION

PROPOSED VACATING THE NORTH 6.54' OF 11.54' PRIVATE DRAINAGE, UTILITY & LANDSCAPE EASEMENT LOCATED AT THE SOUTH PORTION OF LOT 21, ENCLAVE AT PALM HARBOR PLAT BOOK 143, PAGES 14-16 LYING WITHIN SECTION 13, TOWNSHIP 28 SOUTH, RANGE 15 EAST. PINELLAS COUNTY, FLORIDA



AMERICAN SURVEYING & MAPPING INC.

CERTIFICATION OF AUTHORIZATION NUMBER LB#6393
 3191 MAGUIRE BOULEVARD, SUITE 200
 ORLANDO, FLORIDA 32803
 (407) 428-7979
 WWW.AMERICANSURVEYINGANDMAPPING.COM

I HEREBY CERTIFY THAT THIS SKETCH OF DESCRIPTION, SUBJECT TO THE SURVEYOR'S NOTES CONTAINED HEREON, MEETS THE APPLICABLE "STANDARDS OF PRACTICE" AS SET FORTH BY THE FLORIDA BOARD OF PROFESSIONAL SURVEYORS AND MAPPERS IN CHAPTER 5J-17, FLORIDA ADMINISTRATIVE CODE, PURSUANT TO SECTION 472.027, FLORIDA STATUTES.

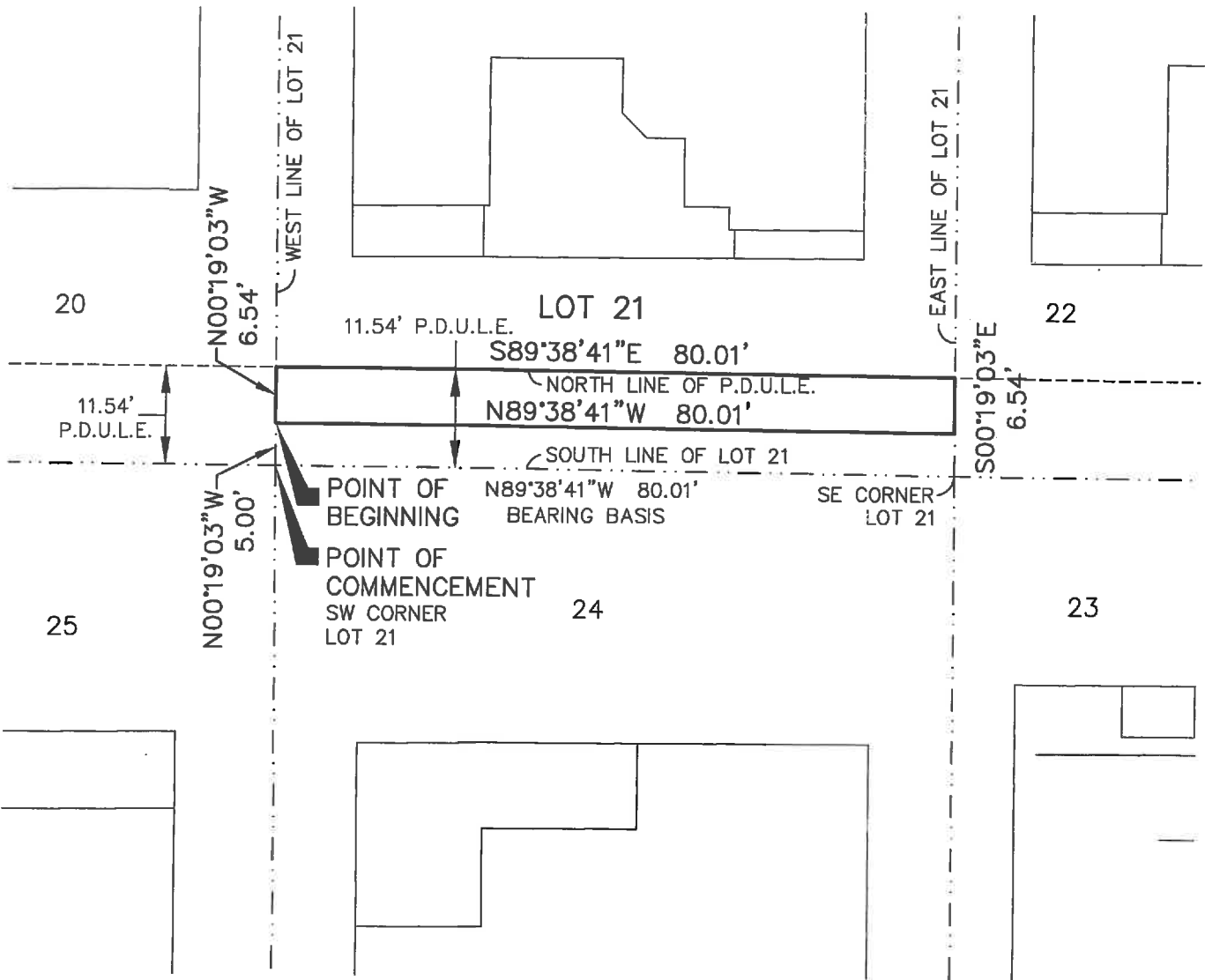
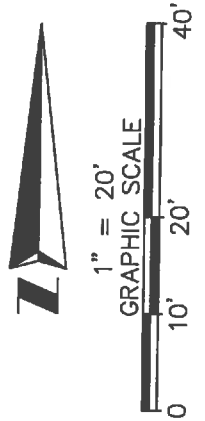
James W. Boleman
 JAMES W. BOLEMAN, PSM #6485

DATE: 01/28/19

| JOB NO.: | DATE | REVISIONS | TECH |
|-------------------|------|-----------|------|
| 180222 | | | |
| SCALE: 1" = 20' | | | |
| DATE: 01/25/19 | | | |
| DRAWN BY: GHF | | | |
| APPROVED BY: XX | | | |
| DRAWING FILE # | | | |
| 180222 LOTS 20-25 | | | |
| ESMT SOD.DWG | | | |

SKETCH OF DESCRIPTION

PROPOSED VACATING THE NORTH 6.54' OF A 11.54' PRIVATE
DRAINAGE, UTILITY & LANDSCAPE EASEMENT,
PER O.R.B. 20204, PAGE 2339
OF THE SOUTH PORTION OF LOT 21, ENCLAVE AT PALM HARBOR
PLAT BOOK 143, PAGES 14-16
LYING WITHIN SECTION 13, TOWNSHIP 28 SOUTH, RANGE 15 EAST
PINELLAS COUNTY, FLORIDA



THIS SKETCH IS NOT A SURVEY.

SHEET 2 OF 2 - NOT FULL OR COMPLETE WITHOUT ALL SHEETS.
SEE SHEET 1 OF 2 FOR DESCRIPTION, NOTES, AND CERTIFICATION.

LEGEND AND ABBREVIATIONS

SW SOUTHWEST
SE SOUTHEAST
P.D.U.L.E. PRIVATE DRAINAGE, UTILITY AND LANDSCAPE EASEMENT
O.R.B. OFFICIAL RECORDS BOOK
PG PAGE



**AMERICAN
SURVEYING
& MAPPING INC.**

CERTIFICATION OF AUTHORIZATION NUMBER LB#6393
3191 MAGUIRE BOULEVARD, SUITE 200
ORLANDO, FLORIDA 32803
(407) 426-7979
WWW.AMERICANSURVEYINGANDMAPPING.COM

SKETCH OF DESCRIPTION

EXHIBIT "A"

PROPOSED VACATING THE NORTH 6.54' OF A 11.54' PRIVATE DRAINAGE, UTILITY & LANDSCAPE EASEMENT, PER O.R.B. 20204, PAGE 2339 OF THE SOUTH PORTION OF LOT 22, ENCLAVE AT PALM HARBOR PLAT BOOK 143, PAGES 14-16 LYING WITHIN SECTION 13, TOWNSHIP 28 SOUTH, RANGE 15 EAST PINELLAS COUNTY, FLORIDA

AREA ABOVE RESERVED FOR RECORDING INFORMATION

DESCRIPTION

THE NORTH 6.54 FEET OF THE 11.54 FEET OF A PRIVATE DRAINAGE, UTILITY AND LANDSCAPE EASEMENT, AS RECORDED IN OFFICIAL RECORDS BOOK 20204, PAGE 2339, LOCATED AT THE SOUTH PORTION OF LOT 22, ENCLAVE AT PALM HARBOR, ACCORDING TO THE PLAT THEREOF, AS RECORDED IN PLAT BOOK 143, PAGES 14 THROUGH 16, OF THE PUBLIC RECORDS OF PINELLAS COUNTY, FLORIDA, LYING WITHIN SECTION 13, TOWNSHIP 28 SOUTH, RANGE 15 EAST, BEING MORE PARTICULARLY DESCRIBED AS FOLLOWS:

COMMENCING AT THE SOUTHWEST CORNER OF SAID LOT 22; THENCE ALONG THE WEST LINE OF SAID LOT 22 RUN NORTH 00°19'03" WEST, A DISTANCE OF 5.00 FEET TO THE POINT OF BEGINNING; THENCE CONTINUE ALONG THE WEST LINE OF SAID LOT 22 NORTH 00°19'03" WEST, A DISTANCE OF 6.54 FEET TO A POINT ON THE NORTH LINE OF THE PRIVATE DRAINAGE, UTILITY AND LANDSCAPE EASEMENT; THENCE DEPARTING SAID WEST LINE, AND ALONG SAID NORTH EASEMENT LINE, RUN SOUTH 89°38'41" EAST, A DISTANCE OF 72.64 FEET TO A POINT ON THE WEST LINE OF A 10 FOOT UTILITY EASEMENT ACCORDING TO THE PLAT OF ENCLAVE AT PALM HARBOR, AS RECORDED IN PLAT BOOK 143, PAGES 14 THROUGH 16 OF THE OFFICIAL RECORDS OF PINELLAS COUNTY, FLORIDA; THENCE DEPARTING SAID NORTH EASEMENT LINE AND ALONG SAID WEST LINE, RUN SOUTH 00°19'03" EAST, A DISTANCE OF 6.54 FEET; THENCE DEPARTING SAID WEST LINE, RUN NORTH 89°38'41" WEST, A DISTANCE OF 72.64 FEET TO THE POINT OF BEGINNING.

CONTAINING 475 SQUARE FEET OR 0.011 ACRES, MORE OR LESS.

Reviewed by: CH SR
 Date: 2-13-19
 SFN# 501-1575

SURVEYOR'S NOTES

1. THE SURVEYOR HAS NOT ABSTRACTED THE LAND SHOWN HEREON FOR EASEMENTS, RIGHT OF WAY, RESTRICTIONS OF RECORD WHICH MAY AFFECT THE TITLE OR USE OF THE LAND
2. NO IMPROVEMENTS HAVE BEEN LOCATED.
3. NOT VALID WITHOUT THE SIGNATURE AND THE ORIGINAL RAISED SEAL OF A FLORIDA LICENSED SURVEYOR AND MAPPER.
4. THIS DOCUMENT CONSISTS OF 2 PAGES NOT FULL OR COMPLETE WITHOUT BOTH.
5. BEARINGS SHOWN HEREON ARE BASED ON SOUTH LINE OF LOT 22, WHICH BEARS NORTH 89°38'41" WEST, PER PLAT BOOK 143, PAGES 14-16.

THIS SKETCH IS NOT A SURVEY.

SHEET 1 OF 2
 SEE SHEET 2 OF 2 FOR SKETCH

SKETCH OF DESCRIPTION

PROPOSED VACATING THE NORTH 6.54' OF 11.54' PRIVATE DRAINAGE, UTILITY & LANDSCAPE EASEMENT LOCATED AT THE SOUTH PORTION OF LOT 22, ENCLAVE AT PALM HARBOR PLAT BOOK 143, PAGES 14-16 LYING WITHIN SECTION 13, TOWNSHIP 28 SOUTH, RANGE 15 EAST PINELLAS COUNTY, FLORIDA

ASAM

AMERICAN SURVEYING & MAPPING INC.

CERTIFICATION OF AUTHORIZATION NUMBER LB#6393
 3191 MAGUIRE BOULEVARD, SUITE 200
 ORLANDO, FLORIDA 32803
 (407) 428-7979
 WWW.AMERICANSURVEYINGANDMAPPING.COM

I HEREBY CERTIFY THAT THIS SKETCH OF DESCRIPTION, SUBJECT TO THE SURVEYOR'S NOTES CONTAINED HEREON, MEETS THE APPLICABLE "STANDARDS OF PRACTICE" AS SET FORTH BY THE FLORIDA BOARD OF PROFESSIONAL SURVEYORS AND MAPPERS IN CHAPTER 5J-17, FLORIDA ADMINISTRATIVE CODE, PURSUANT TO SECTION 472.027, FLORIDA STATUTES.

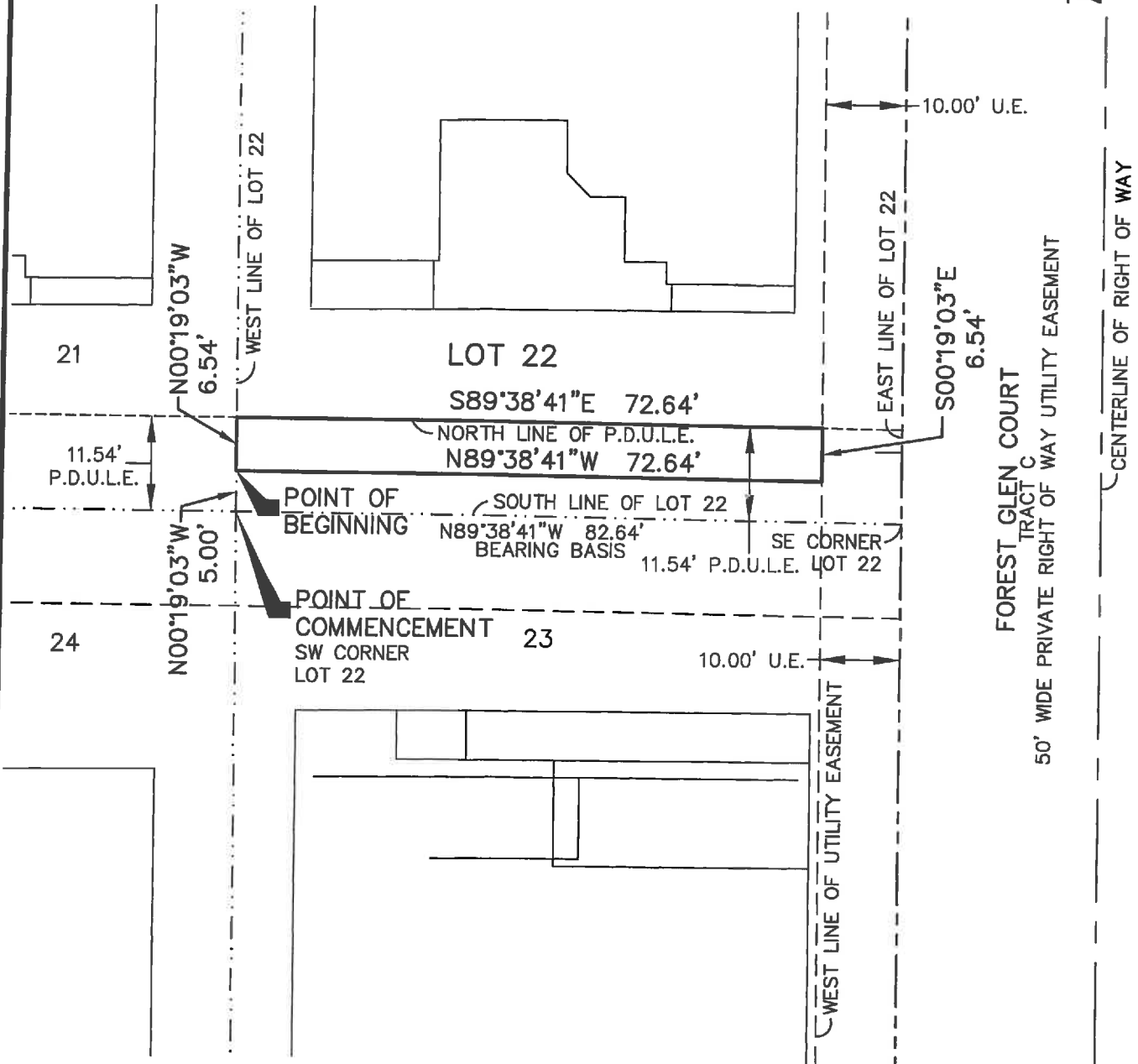
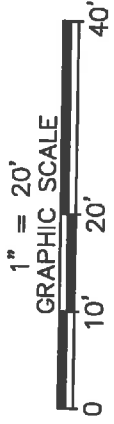
James W. Boleman
 JAMES W. BOLEMAN, PSM #6485

DATE: 02/13/19

| JOB NO.: | DATE | REVISIONS | TECH |
|-------------------|------|-----------|------|
| 180222 | | | |
| SCALE: 1" = 20' | | | |
| DATE: 01/25/19 | . | . | . |
| DRAWN BY: GHF | . | . | . |
| APPROVED BY: XX | . | . | . |
| DRAWING FILE # | . | . | . |
| 180222 LOTS 20-25 | . | . | . |
| ESMT SOD.DWG | . | . | . |

SKETCH OF DESCRIPTION

PROPOSED VACATING THE NORTH 6.54' OF A 11.54' PRIVATE DRAINAGE, UTILITY & LANDSCAPE EASEMENT, PER O.R.B. 20204, PAGE 2339 OF THE SOUTH PORTION OF LOT 22, ENCLAVE AT PALM HARBOR PLAT BOOK 143, PAGES 14-16 LYING WITHIN SECTION 13, TOWNSHIP 28 SOUTH, RANGE 15 EAST PINELLAS COUNTY, FLORIDA



THIS SKETCH IS NOT A SURVEY.

SHEET 2 OF 2 - NOT FULL OR COMPLETE WITHOUT ALL SHEETS. SEE SHEET 1 OF 2 FOR DESCRIPTION, NOTES, AND CERTIFICATION.

LEGEND AND ABBREVIATIONS

| | |
|------------|--|
| SW | SOUTHWEST |
| SE | SOUTHEAST |
| U.E. | UTILITY EASEMENT |
| P.D.U.L.E. | PRIVATE DRAINAGE, UTILITY AND LANDSCAPE EASEMENT |
| O.R.B. | OFFICIAL RECORDS BOOK |
| PG | PAGE |



AMERICAN SURVEYING & MAPPING INC.
 CERTIFICATION OF AUTHORIZATION NUMBER LB#8393
 3191 MAGUIRE BOULEVARD, SUITE 200
 ORLANDO, FLORIDA 32803
 (407) 428-7979
 WWW.AMERICANSURVEYINGANDMAPPING.COM

SKETCH OF DESCRIPTION

EXHIBIT "A"

PROPOSED VACATING THE SOUTH 6.54' OF A 11.54' PRIVATE
DRAINAGE, UTILITY & LANDSCAPE EASEMENT,
PER O.R.B. 20204, PAGE 2339
OF THE NORTH PORTION OF LOT 23, ENCLAVE AT PALM HARBOR
PLAT BOOK 143, PAGES 14-16
LYING WITHIN SECTION 13, TOWNSHIP 28 SOUTH, RANGE 15 EAST
PINELLAS COUNTY, FLORIDA

AREA ABOVE RESERVED FOR RECORDING INFORMATION

DESCRIPTION

THE SOUTH 6.54 FEET OF THE 11.54 FEET OF A PRIVATE DRAINAGE, UTILITY AND LANDSCAPE EASEMENT, AS RECORDED IN OFFICIAL RECORDS BOOK 20204, PAGE 2339, LOCATED AT THE NORTH PORTION OF LOT 23, ENCLAVE AT PALM HARBOR, ACCORDING TO THE PLAT THEREOF, AS RECORDED IN PLAT BOOK 143, PAGES 14 THROUGH 16, OF THE PUBLIC RECORDS OF PINELLAS COUNTY, FLORIDA, LYING WITHIN SECTION 13, TOWNSHIP 28 SOUTH, RANGE 15 EAST, BEING MORE PARTICULARLY DESCRIBED AS FOLLOWS:

COMMENCING AT THE NORTHWEST CORNER OF SAID LOT 23; THENCE ALONG THE WEST LINE OF SAID LOT 23 RUN SOUTH 00°19'03" EAST, A DISTANCE OF 5.00 FEET TO THE POINT OF BEGINNING; THENCE CONTINUE ALONG SAID WEST LINE, RUN SOUTH 00°19'03" EAST, A DISTANCE OF 6.54 FEET TO A POINT ON THE SOUTH LINE OF THE 11.54 FEET PRIVATE DRAINAGE AND LANDSCAPE EASEMENT; THENCE DEPARTING SAID WEST LINE, RUN ALONG SAID SOUTH LINE SOUTH 89°38'41" EAST, A DISTANCE OF 72.64 FEET TO A POINT ON THE WEST LINE OF A 10 FOOT UTILITY EASEMENT, ACCORDING TO THE PLAT OF ENCLAVE AT PALM HARBOR, AS RECORDED IN PLAT BOOK 143, PAGES 14 THROUGH 16, OF THE PUBLIC RECORDS OF PINELLAS COUNTY, FLORIDA; THENCE DEPARTING SAID SOUTH EASEMENT LINE AND ALONG SAID WEST LINE RUN NORTH 00°19'03" WEST, A DISTANCE OF 6.54 FEET; THENCE DEPARTING SAID WEST EASEMENT LINE, RUN NORTH 89°38'41" WEST, A DISTANCE OF 72.64 FEET TO THE POINT OF BEGINNING.

CONTAINING 475 SQUARE FEET OR 0.011 ACRES, MORE OR LESS.

Reviewed by: CH SB
Date: 2-15-19
SFN# 501-1575

SURVEYOR'S NOTES

1. THE SURVEYOR HAS NOT ABSTRACTED THE LAND SHOWN HEREON FOR EASEMENTS, RIGHT OF WAY, RESTRICTIONS OF RECORD WHICH MAY AFFECT THE TITLE OR USE OF THE LAND
2. NO IMPROVEMENTS HAVE BEEN LOCATED.
3. NOT VALID WITHOUT THE SIGNATURE AND THE ORIGINAL RAISED SEAL OF A FLORIDA LICENSED SURVEYOR AND MAPPER.
4. THIS DOCUMENT CONSISTS OF 2 PAGES NOT FULL OR COMPLETE WITHOUT BOTH.
5. BEARINGS SHOWN HEREON ARE BASED ON NORTH LINE OF LOT 23, WHICH BEARS SOUTH 89°38'41" EAST, PER PLAT BOOK 143, PAGES 14-16.

THIS SKETCH IS NOT A SURVEY.

SHEET 1 OF 2
SEE SHEET 2 OF 2 FOR SKETCH

SKETCH OF DESCRIPTION

PROPOSED VACATING THE SOUTH 6.54' OF 11.54'
PRIVATE DRAINAGE, UTILITY & LANDSCAPE EASEMENT
LOCATED AT THE NORTH PORTION OF LOT 23,
ENCLAVE AT PALM HARBOR
PLAT BOOK 143, PAGES 14-16
LYING WITHIN
SECTION 13, TOWNSHIP 28 SOUTH, RANGE 15 EAST
PINELLAS COUNTY, FLORIDA

ASAM

**AMERICAN
SURVEYING
& MAPPING INC.**

CERTIFICATION OF AUTHORIZATION NUMBER LB#6383
3191 MAGUIRE BOULEVARD, SUITE 200
ORLANDO, FLORIDA 32803
(407) 426-7979
WWW.AMERICANSURVEYINGANDMAPPING.COM

I HEREBY CERTIFY THAT THIS SKETCH OF DESCRIPTION, SUBJECT TO THE SURVEYOR'S NOTES CONTAINED HEREON, MEETS THE APPLICABLE "STANDARDS OF PRACTICE" AS SET FORTH BY THE FLORIDA BOARD OF PROFESSIONAL SURVEYORS AND MAPPERS IN CHAPTER 5J-17, FLORIDA ADMINISTRATIVE CODE, PURSUANT TO SECTION 472.027, FLORIDA STATUTES.

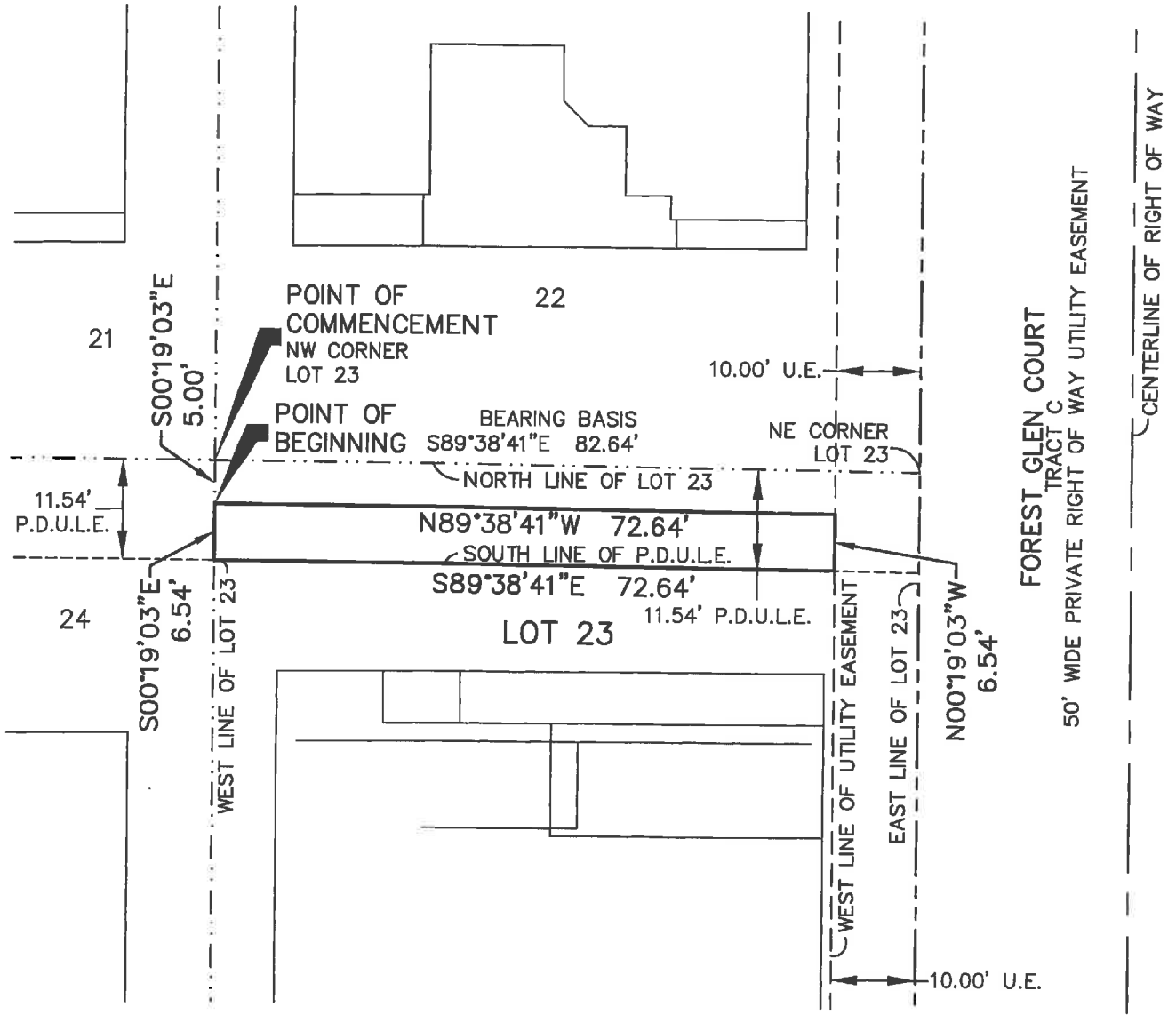
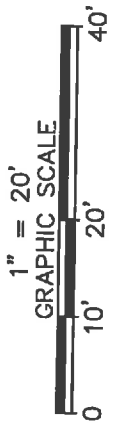
James W. Boleman
JAMES W. BOLEMAN, PSM #6485

DATE: 02/13/19

| JOB NO.: | DATE | REVISIONS | TECH |
|-------------------|------|-----------|------|
| 180222 | | | |
| SCALE: 1" = 20' | | | |
| DATE: 01/25/19 | | | |
| DRAWN BY: GHF | | | |
| APPROVED BY: XX | | | |
| DRAWING FILE # | | | |
| 180222 LOTS 20-25 | | | |
| ESMT SOD.DWG | | | |

SKETCH OF DESCRIPTION

PROPOSED VACATING THE SOUTH 6.54' OF A 11.54' PRIVATE
DRAINAGE, UTILITY & LANDSCAPE EASEMENT,
PER O.R.B. 20204, PAGE 2339
OF THE NORTH PORTION OF LOT 23, ENCLAVE AT PALM HARBOR
PLAT BOOK 143, PAGES 14-16
LYING WITHIN SECTION 13, TOWNSHIP 28 SOUTH, RANGE 15 EAST
PINELLAS COUNTY, FLORIDA



THIS SKETCH IS NOT A SURVEY.

SHEET 2 OF 2 - NOT FULL OR COMPLETE WITHOUT ALL SHEETS.
SEE SHEET 1 OF 2 FOR DESCRIPTION, NOTES, AND CERTIFICATION.

LEGEND AND ABBREVIATIONS

| | |
|------------|--|
| NW | NORTHWEST |
| NE | NORTHEAST |
| U.E. | UTILITY EASEMENT |
| P.D.U.L.E. | PRIVATE DRAINAGE, UTILITY AND LANDSCAPE EASEMENT |
| O.R.B. | OFFICIAL RECORDS BOOK |
| PG | PAGE |



**AMERICAN
SURVEYING
& MAPPING INC.**

CERTIFICATION OF AUTHORIZATION NUMBER LB#6393
3191 MAGUIRE BOULEVARD, SUITE 200
ORLANDO, FLORIDA 32803
(407) 426-7979
WWW.AMERICANSURVEYINGANDMAPPING.COM

SKETCH OF DESCRIPTION

EXHIBIT "A"

PROPOSED VACATING THE SOUTH 6.54' OF A 11.54' PRIVATE DRAINAGE, UTILITY & LANDSCAPE EASEMENT, PER O.R.B. 20204, PAGE 2339 OF THE NORTH PORTION OF LOT 24, ENCLAVE AT PALM HARBOR PLAT BOOK 143, PAGES 14-16 LYING WITHIN SECTION 13, TOWNSHIP 28 SOUTH, RANGE 15 EAST PINELLAS COUNTY, FLORIDA

AREA ABOVE RESERVED FOR RECORDING INFORMATION

DESCRIPTION

THE SOUTH 6.54 FEET OF THE 11.54 FEET OF A PRIVATE DRAINAGE, UTILITY AND LANDSCAPE EASEMENT, AS RECORDED IN OFFICIAL RECORDS BOOK 20204, PAGE 2339, LOCATED AT THE NORTH PORTION OF LOT 24, ENCLAVE AT PALM HARBOR, ACCORDING TO THE PLAT THEREOF, AS RECORDED IN PLAT BOOK 143, PAGES 14 THROUGH 16, OF THE PUBLIC RECORDS OF PINELLAS COUNTY, FLORIDA, LYING WITHIN SECTION 13, TOWNSHIP 28 SOUTH, RANGE 15 EAST, BEING MORE PARTICULARLY DESCRIBED AS FOLLOWS:

COMMENCING AT THE NORTHWEST CORNER OF SAID LOT 24; THENCE ALONG THE WEST LINE OF SAID LOT 24 RUN SOUTH 00°19'03" EAST, A DISTANCE OF 5.00 FEET TO THE POINT OF BEGINNING; THENCE DEPARTING SAID WEST LINE, RUN SOUTH 89°38'41" EAST, A DISTANCE OF 80.01 FEET TO A POINT ON THE EAST LINE OF SAID LOT 24; THENCE ALONG EAST LINE OF SAID LOT 24, RUN SOUTH 00°19'03" EAST, A DISTANCE OF 6.54 FEET TO A POINT ON THE SOUTH LINE OF THE 11.54 FEET PRIVATE DRAINAGE AND LANDSCAPE EASEMENT; THENCE DEPARTING SAID EAST LINE, RUN ALONG SAID SOUTH LINE NORTH 89°38'41" WEST, A DISTANCE OF 80.01 FEET TO A POINT ON THE WEST LINE OF SAID LOT 24; THENCE DEPARTING SAID SOUTH EASEMENT LINE AND ALONG SAID WEST LINE RUN NORTH 00°19'03" WEST, A DISTANCE OF 6.54 FEET TO THE POINT OF BEGINNING.

CONTAINING 523 SQUARE FEET OR 0.012 ACRES, MORE OR LESS.

Reviewed by: CH SB
 Date: 2-15-19
 SFN # 501-1575

SURVEYOR'S NOTES

1. THE SURVEYOR HAS NOT ABSTRACTED THE LAND SHOWN HEREON FOR EASEMENTS, RIGHT OF WAY, RESTRICTIONS OF RECORD WHICH MAY AFFECT THE TITLE OR USE OF THE LAND
2. NO IMPROVEMENTS HAVE BEEN LOCATED.
3. NOT VALID WITHOUT THE SIGNATURE AND THE ORIGINAL RAISED SEAL OF A FLORIDA LICENSED SURVEYOR AND MAPPER.
4. THIS DOCUMENT CONSISTS OF 2 PAGES NOT FULL OR COMPLETE WITHOUT BOTH.
5. BEARINGS SHOWN HEREON ARE BASED ON NORTH LINE OF LOT 24, WHICH BEARS SOUTH 89°38'41" EAST, PER PLAT BOOK 143, PAGES 14-16.

THIS SKETCH IS NOT A SURVEY.

SHEET 1 OF 2
 SEE SHEET 2 OF 2 FOR SKETCH

SKETCH OF DESCRIPTION

PROPOSED VACATING THE SOUTH 6.54' OF 11.54' PRIVATE DRAINAGE, UTILITY & LANDSCAPE EASEMENT LOCATED AT THE NORTH PORTION OF LOT 24, ENCLAVE AT PALM HARBOR PLAT BOOK 143, PAGES 14-16 LYING WITHIN SECTION 13, TOWNSHIP 28 SOUTH, RANGE 15 EAST PINELLAS COUNTY, FLORIDA



AMERICAN SURVEYING & MAPPING INC.

CERTIFICATION OF AUTHORIZATION NUMBER LB#6393
 3191 MAGUIRE BOULEVARD, SUITE 200
 ORLANDO, FLORIDA 32803
 (407) 426-7979
 WWW.AMERICANSURVEYINGANDMAPPING.COM

I HEREBY CERTIFY THAT THIS SKETCH OF DESCRIPTION, SUBJECT TO THE SURVEYOR'S NOTES CONTAINED HEREON, MEETS THE APPLICABLE "STANDARDS OF PRACTICE" AS SET FORTH BY THE FLORIDA BOARD OF PROFESSIONAL SURVEYORS AND MAPPERS IN CHAPTER 5J-17, FLORIDA ADMINISTRATIVE CODE, PURSUANT TO SECTION 472.027, FLORIDA STATUTES.

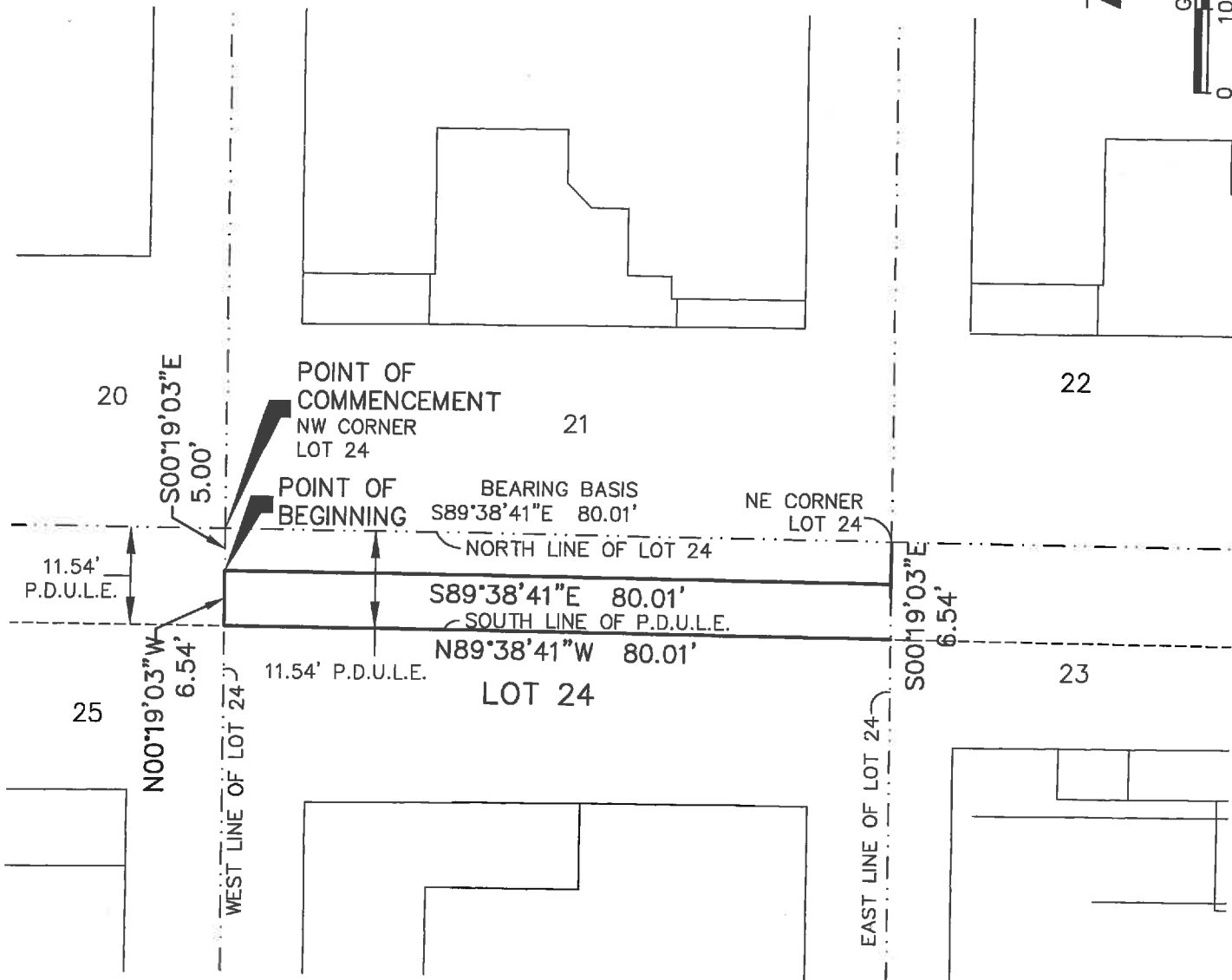
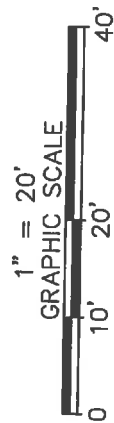
James W. Boleman
 JAMES W. BOLEMAN, PSM #6485

DATE: 01/28/19

| JOB NO.: | DATE | REVISIONS | TECH |
|-------------------|------|-----------|------|
| 180222 | | | |
| SCALE: 1"= 20' | | | |
| DATE: 01/25/19 | | | |
| DRAWN BY: GHF | | | |
| APPROVED BY: XX | | | |
| DRAWING FILE # | | | |
| 180222 LOTS 20-25 | | | |
| ESMT SOD.DWG | | | |

SKETCH OF DESCRIPTION

PROPOSED VACATING THE SOUTH 6.54' OF A 11.54' PRIVATE
DRAINAGE, UTILITY & LANDSCAPE EASEMENT,
PER O.R.B. 20204, PAGE 2339
OF THE NORTH PORTION OF LOT 24, ENCLAVE AT PALM HARBOR
PLAT BOOK 143, PAGES 14-16
LYING WITHIN SECTION 13, TOWNSHIP 28 SOUTH, RANGE 15 EAST
PINELLAS COUNTY, FLORIDA



THIS SKETCH IS NOT A SURVEY.

SHEET 2 OF 2 - NOT FULL OR COMPLETE WITHOUT ALL SHEETS.
SEE SHEET 1 OF 2 FOR DESCRIPTION, NOTES, AND CERTIFICATION.

LEGEND AND ABBREVIATIONS

| | |
|------------|--|
| NW | NORTHWEST |
| NE | NORTHEAST |
| P.D.U.L.E. | PRIVATE DRAINAGE, UTILITY AND LANDSCAPE EASEMENT |
| O.R.B. | OFFICIAL RECORDS BOOK |
| PG | PAGE |



**AMERICAN
SURVEYING
& MAPPING INC.**

CERTIFICATION OF AUTHORIZATION NUMBER LB#8393
3191 MAGUIRE BOULEVARD, SUITE 200
ORLANDO, FLORIDA 32803
(407) 426-7979
WWW.AMERICANSURVEYINGANDMAPPING.COM

SKETCH OF DESCRIPTION

EXHIBIT "A"

PROPOSED VACATING THE SOUTH 6.54' OF A 11.54' PRIVATE
DRAINAGE, UTILITY & LANDSCAPE EASEMENT,
PER O.R.B. 20204, PAGE 2339
OF THE NORTH PORTION OF LOT 25, ENCLAVE AT PALM HARBOR
PLAT BOOK 143, PAGES 14-16
LYING WITHIN SECTION 13, TOWNSHIP 28 SOUTH, RANGE 15 EAST
PINELLAS COUNTY, FLORIDA

AREA ABOVE RESERVED FOR RECORDING INFORMATION

DESCRIPTION

THE SOUTH 6.54 FEET OF THE 11.54 FEET OF A PRIVATE DRAINAGE, UTILITY AND LANDSCAPE EASEMENT, AS RECORDED IN OFFICIAL RECORDS BOOK 20204, PAGE 2339, LOCATED AT THE NORTH PORTION OF LOT 25, ENCLAVE AT PALM HARBOR, ACCORDING TO THE PLAT THEREOF, AS RECORDED IN PLAT BOOK 143, PAGES 14 THROUGH 16, OF THE PUBLIC RECORDS OF PINELLAS COUNTY, FLORIDA, LYING WITHIN SECTION 13, TOWNSHIP 28 SOUTH, RANGE 15 EAST, BEING MORE PARTICULARLY DESCRIBED AS FOLLOWS:

COMMENCING AT THE NORTHEAST CORNER OF SAID LOT 25; THENCE ALONG THE EAST LINE OF SAID LOT 25 RUN SOUTH 00°19'03" EAST, A DISTANCE OF 5.00 FEET TO THE POINT OF BEGINNING; THENCE CONTINUE ALONG SAID EAST LINE SOUTH 00°19'13" EAST, A DISTANCE OF 6.54 FEET TO A POINT ON THE SOUTH LINE OF THE 11.54 FEET PRIVATE DRAINAGE, UTILITY, AND LANDSCAPE EASEMENT, THENCE DEPARTING SAID EAST LINE, RUN NORTH 89°38'41" WEST, A DISTANCE OF 72.62 FEET TO A POINT ON THE EAST LINE OF A 10 FOOT UTILITY EASEMENT, ACCORDING TO THE PLAT OF ENCLAVE AT PALM HARBOR, AS RECORDED IN PLAT BOOK 143, PAGES 14 THROUGH 16 OF THE PUBLIC RECORDS OF PINELLAS COUNTY, FLORIDA; THENCE DEPARTING SAID SOUTH EASEMENT LINE AND ALONG SAID EAST LINE, RUN NORTH 00°19'03" WEST, A DISTANCE OF 6.54 FEET TO A POINT; THENCE DEPARTING SAID EAST LINE, RUN SOUTH 89°38'41" EAST, A DISTANCE OF 72.62 FEET TO THE POINT OF BEGINNING.

CONTAINING 475 SQUARE FEET OR 0.011 ACRES, MORE OR LESS.

Reviewed by: CH SB
Date: 2-15-19
SFN # 501-1575

SURVEYOR'S NOTES

1. THE SURVEYOR HAS NOT ABSTRACTED THE LAND SHOWN HEREON FOR EASEMENTS, RIGHT OF WAY, RESTRICTIONS OF RECORD WHICH MAY AFFECT THE TITLE OR USE OF THE LAND
2. NO IMPROVEMENTS HAVE BEEN LOCATED.
3. NOT VALID WITHOUT THE SIGNATURE AND THE ORIGINAL RAISED SEAL OF A FLORIDA LICENSED SURVEYOR AND MAPPER.
4. THIS DOCUMENT CONSISTS OF 2 PAGES NOT FULL OR COMPLETE WITHOUT BOTH.
5. BEARINGS SHOWN HEREON ARE BASED ON NORTH LINE OF LOT 25, WHICH BEARS SOUTH 89°38'41" EAST, PER PLAT BOOK 143, PAGES 14-16.

THIS SKETCH IS NOT A SURVEY.

SHEET 1 OF 2
SEE SHEET 2 OF 2 FOR SKETCH

SKETCH OF DESCRIPTION

PROPOSED VACATING THE SOUTH 6.54' OF 11.54'
PRIVATE DRAINAGE, UTILITY & LANDSCAPE EASEMENT
LOCATED AT THE NORTH PORTION OF LOT 25,
ENCLAVE AT PALM HARBOR
PLAT BOOK 143, PAGES 14-16
LYING WITHIN
SECTION 13, TOWNSHIP 28 SOUTH, RANGE 15 EAST
PINELLAS COUNTY, FLORIDA

ASAM

**AMERICAN
SURVEYING
& MAPPING INC.**

CERTIFICATION OF AUTHORIZATION NUMBER LB#6393
3191 MAGUIRE BOULEVARD, SUITE 200
ORLANDO, FLORIDA 32803
(407) 426-7979
WWW.AMERICANSURVEYINGANDMAPPING.COM

I HEREBY CERTIFY THAT THIS SKETCH OF DESCRIPTION, SUBJECT TO THE SURVEYOR'S NOTES CONTAINED HEREON, MEETS THE APPLICABLE "STANDARDS OF PRACTICE" AS SET FORTH BY THE FLORIDA BOARD OF PROFESSIONAL SURVEYORS AND MAPPERS IN CHAPTER 5J-17, FLORIDA ADMINISTRATIVE CODE, PURSUANT TO SECTION 472.027, FLORIDA STATUTES.

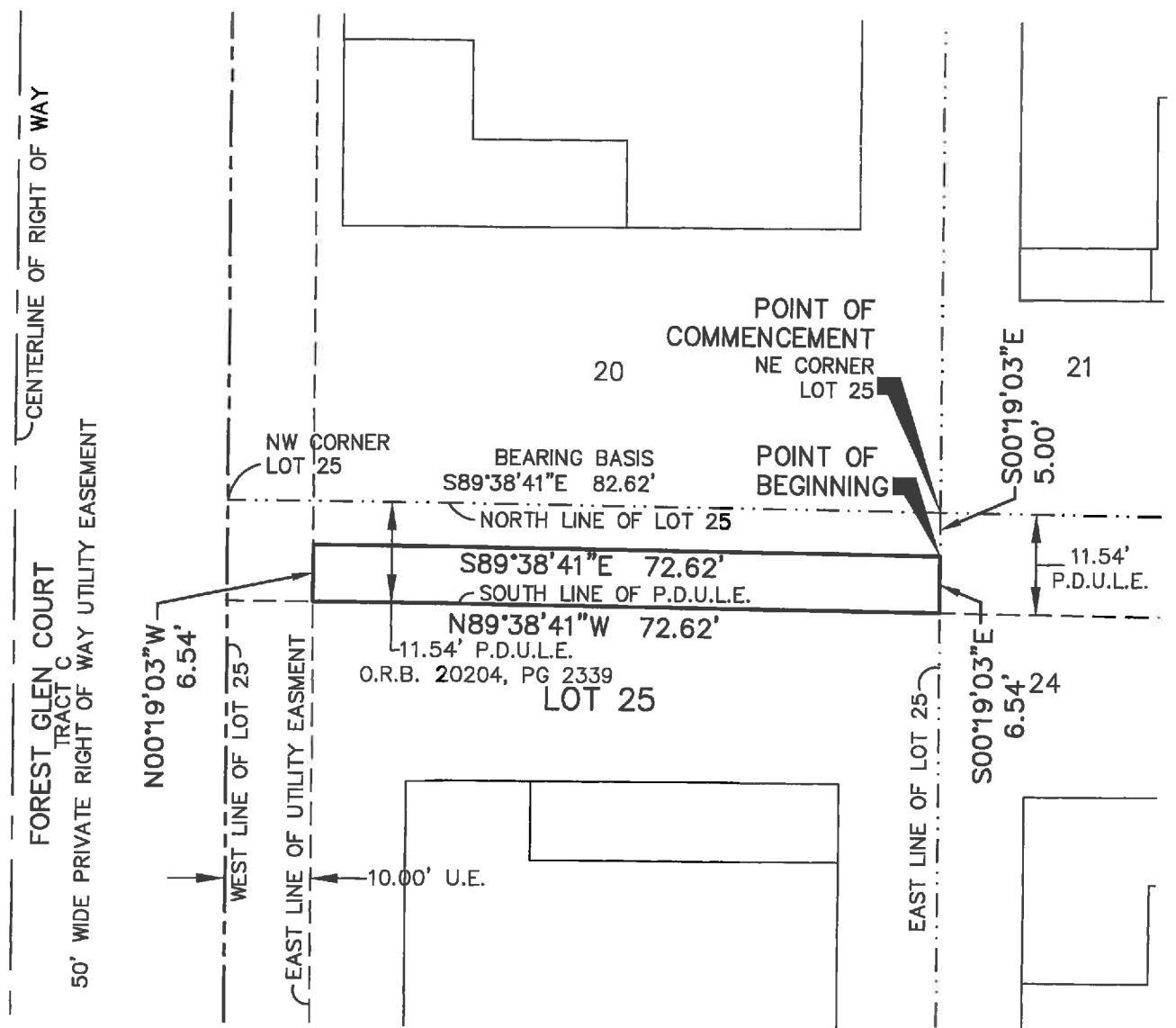
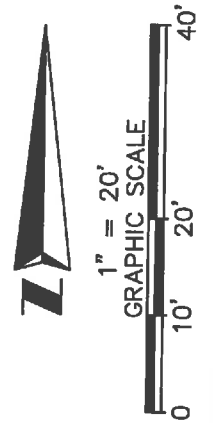
James W. Boleman
JAMES W. BOLEMAN, PSM #6485

DATE: 02/13/19

| JOB NO.: | DATE | REVISIONS | TECH |
|-------------------|------|-----------|------|
| 180222 | | | |
| SCALE: 1" = 20' | | | |
| DATE: 01/25/19 | | | |
| DRAWN BY: GHF | | | |
| APPROVED BY: XX | | | |
| DRAWING FILE # | | | |
| 180222 LOTS 20-25 | | | |
| ESMT SOD.DWG | | | |

SKETCH OF DESCRIPTION

PROPOSED VACATING THE SOUTH 6.54' OF A 11.54' PRIVATE
DRAINAGE, UTILITY & LANDSCAPE EASEMENT,
PER O.R.B. 20204, PAGE 2339
OF THE NORTH PORTION OF LOT 25, ENCLAVE AT PALM HARBOR
PLAT BOOK 143, PAGES 14-16
LYING WITHIN SECTION 13, TOWNSHIP 28 SOUTH, RANGE 15 EAST
PINELLAS COUNTY, FLORIDA



THIS SKETCH IS NOT A SURVEY.

SHEET 2 OF 2 - NOT FULL OR COMPLETE WITHOUT ALL SHEETS.
SEE SHEET 1 OF 2 FOR DESCRIPTION, NOTES, AND CERTIFICATION.

LEGEND AND ABBREVIATIONS

| | |
|------------|--|
| NW | NORTHWEST |
| NE | NORTHEAST |
| U.E. | UTILITY EASEMENT |
| P.D.U.L.E. | PRIVATE DRAINAGE, UTILITY AND LANDSCAPE EASEMENT |
| O.R.B. | OFFICIAL RECORDS BOOK |
| PG | PAGE |



**AMERICAN
SURVEYING
& MAPPING INC.**

CERTIFICATION OF AUTHORIZATION NUMBER LB#6393
3191 MAGUIRE BOULEVARD, SUITE 200
ORLANDO, FLORIDA 32803
(407) 428-7978
WWW.AMERICANSURVEYINGANDMAPPING.COM