

Map 1 - Location

CASE #: CW18-14

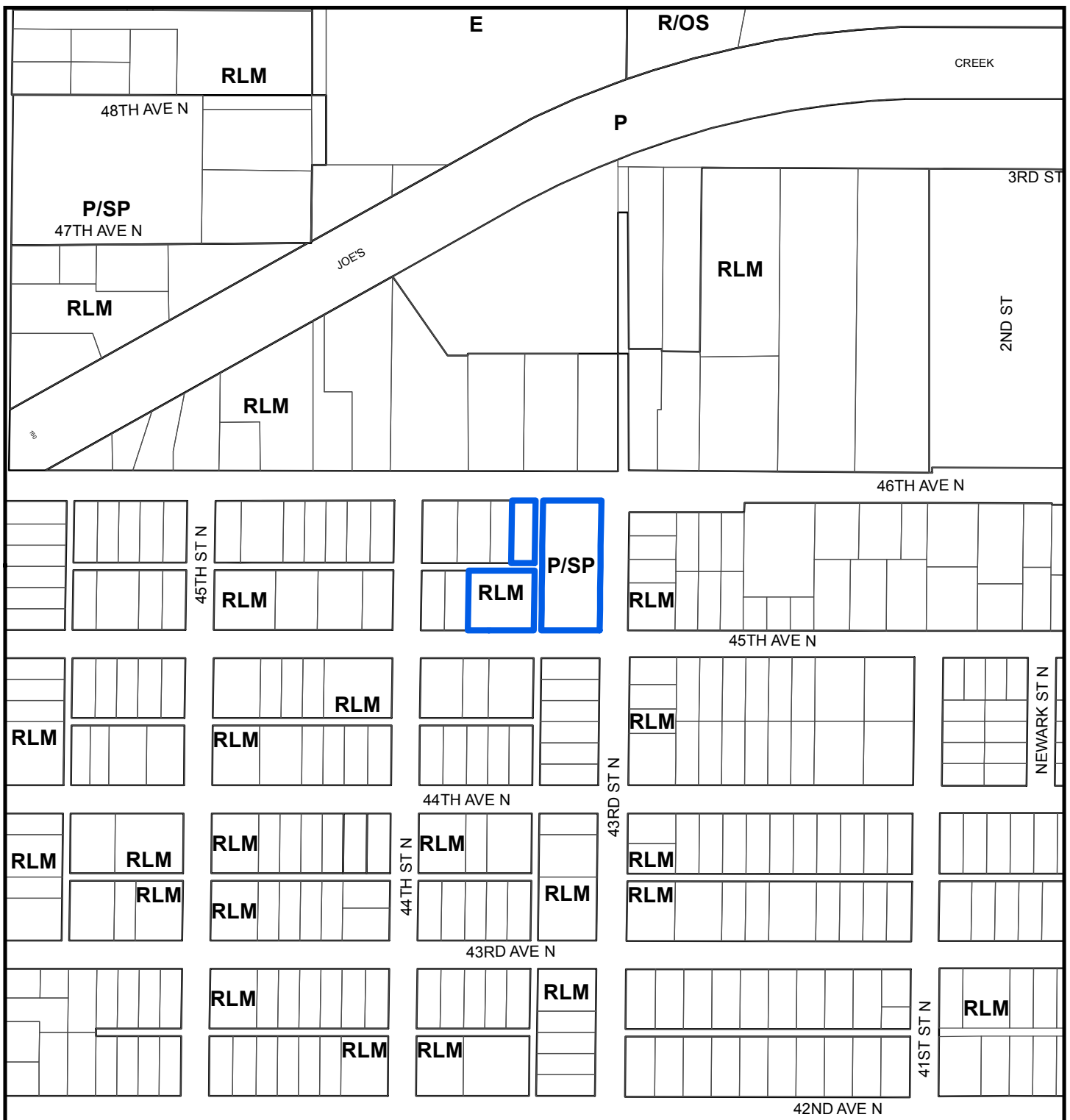
FROM: Residential Low Medium & Public/Semi-Public

AREA: 1.3 Acres

JURISDICTION: Pinellas County

TO: Residential Medium





Map 2 - Current Countywide Plan Map & Jurisdictional Map


CASE #: CW18-14 **FROM:** Residential Low Medium & Public/Semi-Public **AREA:** 1.3 Acres

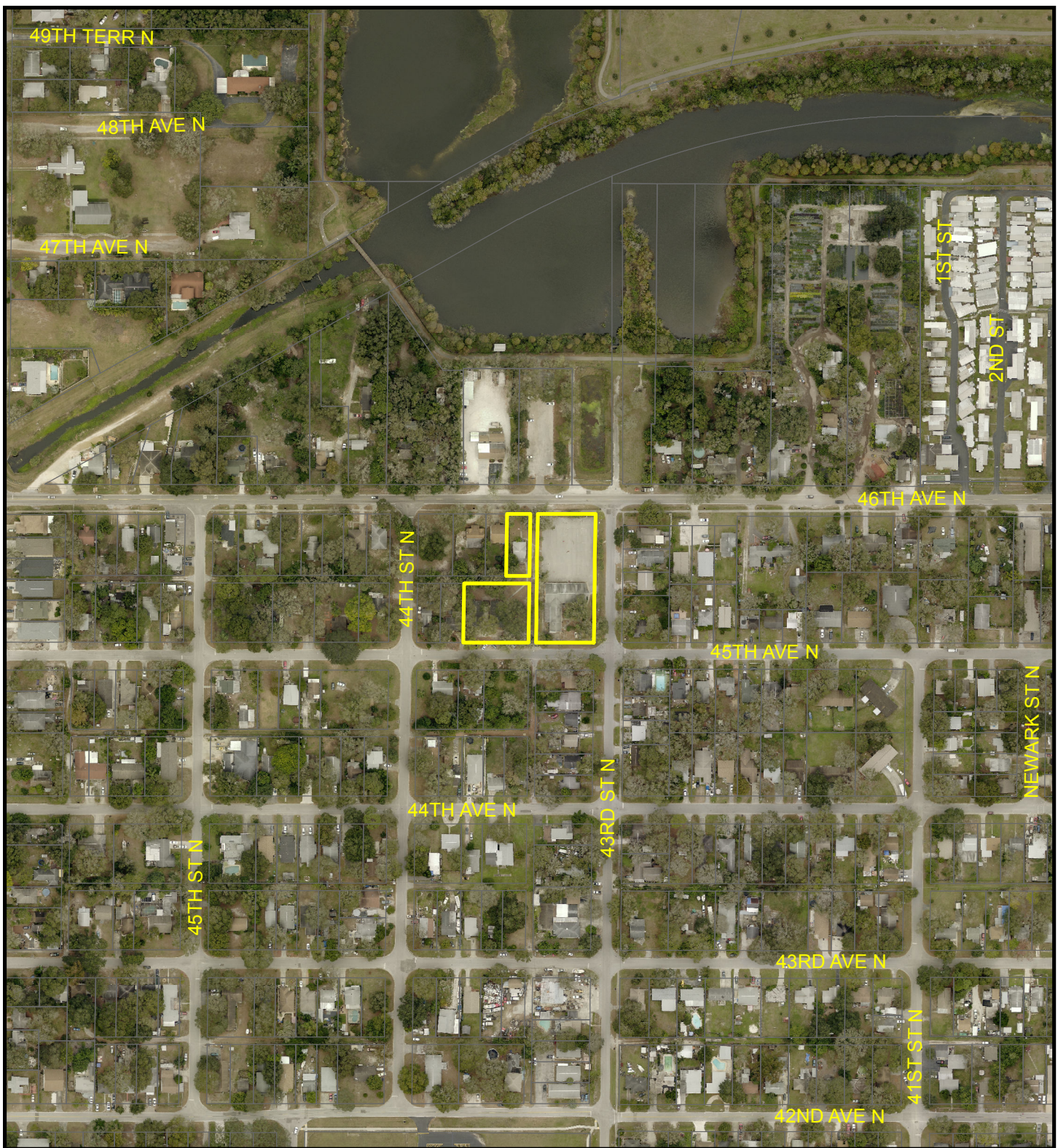
JURISDICTION: Pinellas County **TO:** Residential Medium

LEGEND:

 Unincorporated



 Feet
0 100 200 400



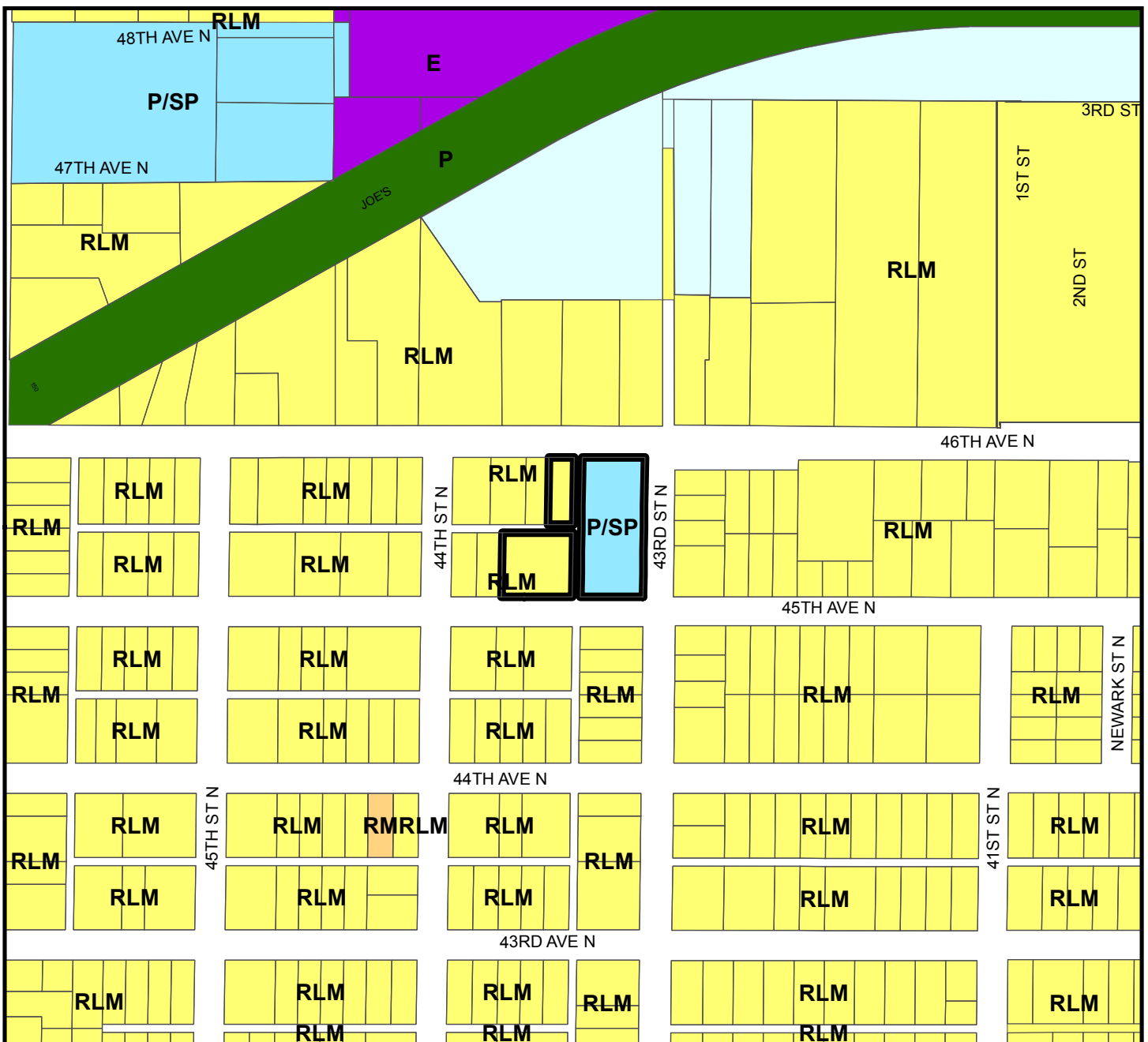
Map 3 - Aerial

CASE #: CW18-14 **FROM:** Residential Low Medium & Public/Semi-Public **AREA:** 1.3 Acres

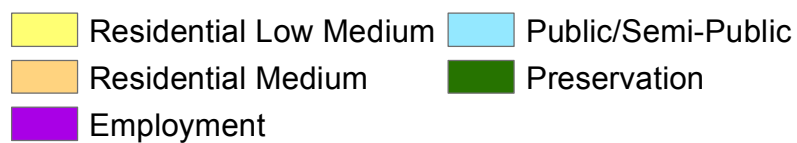
JURISDICTION: Pinellas County **TO:** Residential Medium



0 100 200 400 Feet



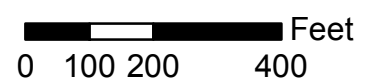
Countywide Plan Map Categories

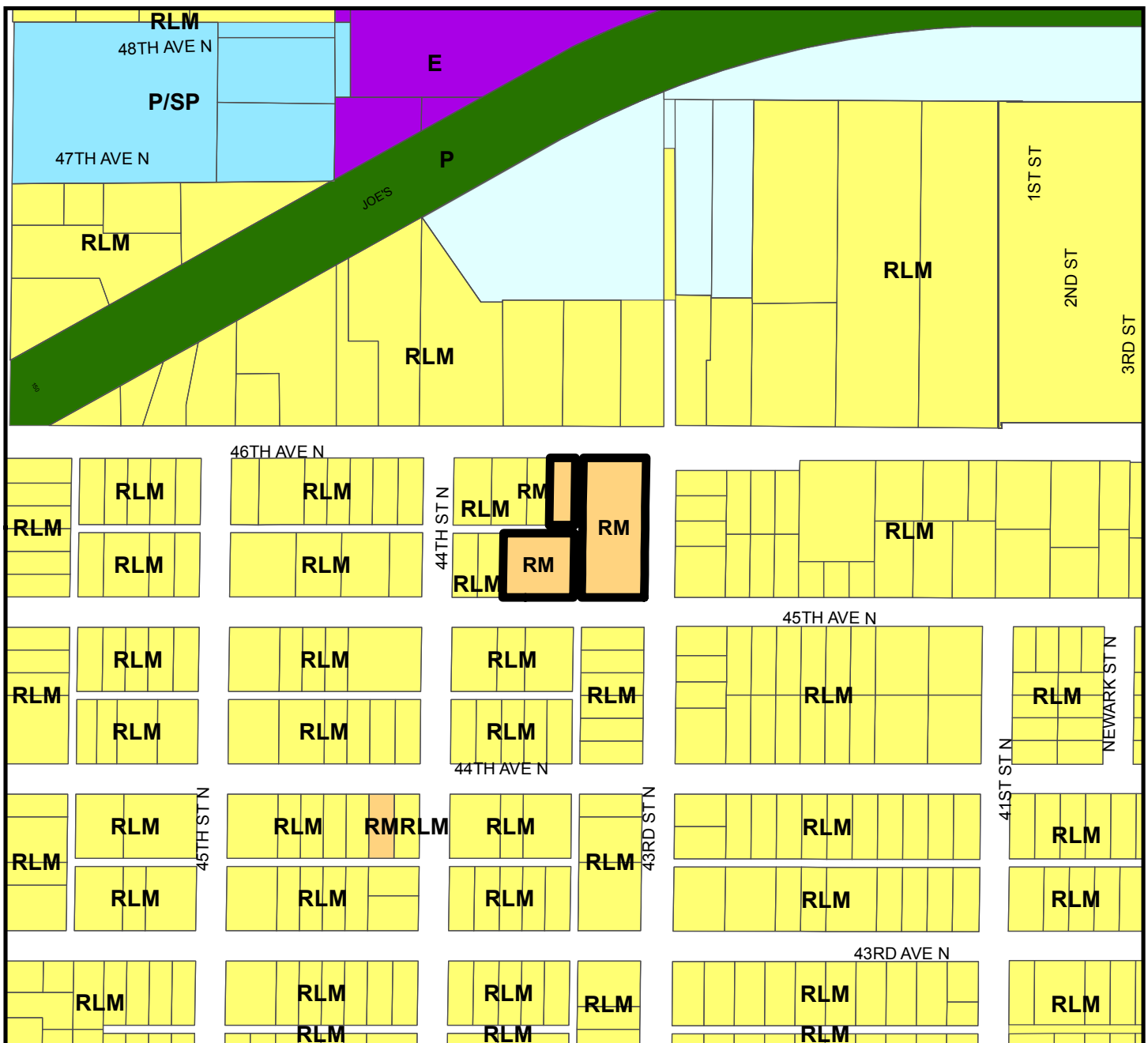


Map 4 - Current Countywide Plan Map

CASE #: CW18-14 **FROM:** Residential Low Medium & Public/Semi-Public **AREA:** 1.3 Acres

JURISDICTION: Pinellas County **TO:** Residential Medium





Countywide Plan Map Categories



Map 5 - Proposed Countywide Plan Map

CASE #: CW18-14 **FROM:** Residential Low Medium & Public/Semi-Public **AREA:** 1.3 Acres

JURISDICTION: Pinellas County **TO:** Residential Medium

