

# FEATHER SOUND MUNICIPAL SERVICES TAXING UNIT

---

FYE 2019

# Our Charter

PART II - PINELLAS COUNTY CODE

Chapter 114 - SPECIAL DISTRICTS

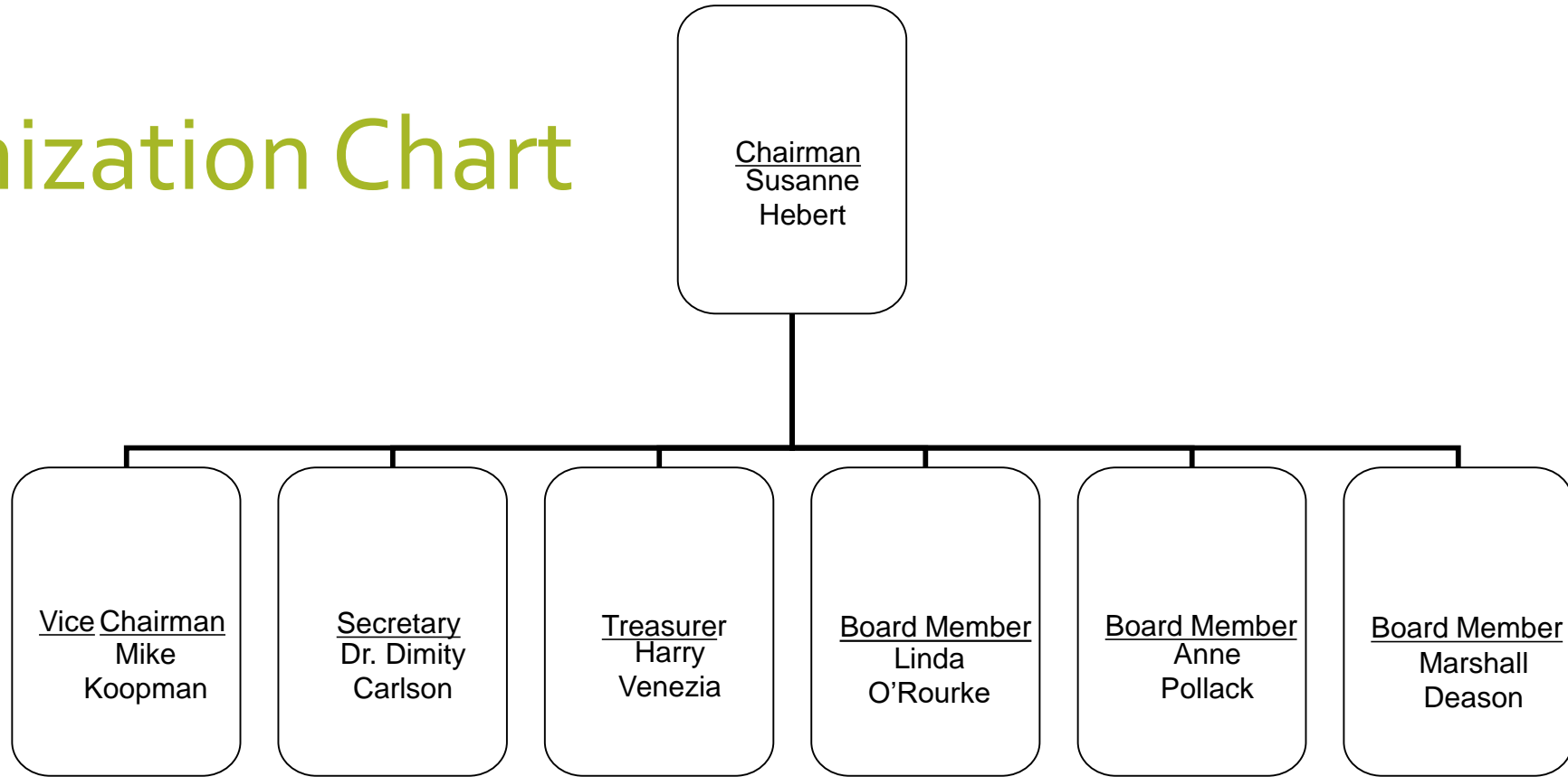
ARTICLE VIII. - FEATHER SOUND MUNICIPAL SERVICES TAXING UNIT

Sec. 114-279

....funds derived from the levy of ad valorem taxes shall be utilized only for street lighting and to acquire, develop and maintain recreational areas/greenspace...

MSTU established in 1990.

# Organization Chart



# Street Lights



THE TAXING DISTRICT LEASES  
APPROXIMATELY 300 LIGHT  
POLES AND FIXTURES FROM  
DUKE ENERGY AND PAYS FOR  
ELECTRIC POWER ON A  
MONTHLY BASIS

# Green-spaces: Easements, Medians, Main Entrance

- THE TAXING DISTRICT MAINTAINS GREENSPACES WITH MOWING, IRRIGATION AND TREE SERVICES





# Green-spaces: Earl Maize Recreation Area

- The recreation area includes a children's playground, basketball court, picnic shelters, a baseball/soccer field and boardwalk.



# NET CASH FLOW / FUNDING DEFICITS

|      | FUNDING   | UTILITIES | GREENSPACES                    |       | NET      | CASH     |         |  |
|------|-----------|-----------|--------------------------------|-------|----------|----------|---------|--|
|      |           | TOTAL     | MAINTENANCE + CAPITAL PROJECTS | ADMIN | CASHFLOW | RESERVES | MILLAGE |  |
| 2008 | \$266,000 | 81,179    | 131,438                        | 9,345 | 44,038   |          | 0.900   |  |
| 2009 | 240,000   | 78,957    | 75,240                         | 5,856 | 79,947   |          | 0.567   |  |
| 2010 | 150,000   | 84,174    | 105,783                        | 8,398 | -48,355  |          | 0.567   |  |
| 2011 | 124,000   | 81,062    | 75,709                         | 7,599 | -64,362  | 634,491  | 0.567   |  |
| 2012 | 120,000   | 84,384    | 66,237                         | 6,416 | -37,037  | 601,110  | 0.500   |  |
| 2013 | 148,070   | 84,736    | 131,914                        | 5,952 | -86,273  | 504,510  | 0.500   |  |
| 2014 | 115,000   | 85,244    | 88,040                         | 3,979 | -62,263  | 413,436  | 0.500   |  |
| 2015 | 115,000   | 86,987    | 66,264                         | 6,087 | -44,338  | 365,237  | 0.500   |  |
| 2016 | 119,600   | 81,786    | 66,183                         | 6,354 | -34,723  | 341,721  | 0.500   |  |
| 2017 | 166,000   | 83,000    | 122,183                        | 7,202 | -46,385  | 265,419  | 0.500   |  |
| 2018 | 240,000   | 81,462    | 251,181                        | 6,949 | -79,542  | 151,022  | 0.500   |  |
| 2019 | 200,000   | 83,906    | 177,491                        | 7,158 | -68,529  | 12,493   | 0.500   |  |
| 2020 | 150,000   | 86,423    | 159,516                        | 7,372 | -103,311 | -90,818  | 0.500   |  |
| 2021 | 155,000   | 89,016    | 181,601                        | 7,593 | -123,210 | -214,029 | 0.500   |  |
| 2022 | 160,000   | 91,686    | 83,750                         | 7,821 | -23,258  | -237,286 | 0.500   |  |
| 2023 | 165,000   | 94,437    | 85,964                         | 8,056 | -23,456  | -260,742 | 0.500   |  |

# Do you support a millage/tax increase for Feather Sound?

The Feather Sound Community Services Taxing District (FSCSTD) is preparing a new annual budget to submit to the Board of County Commissioners for the fiscal year ending September 30th 2018. As part of the budget presentation the Taxing District Board will be asking county commissioners to approve an increase in the Feather Sound taxing district millage rate from .5 to .75

The taxing district has been operating at a deficit for almost 10 years, drawing on past accumulated tax collections to pay expenses but the reserves are now nearly gone. See

[http://feathersound.org/fscsd/annual\\_report.htm](http://feathersound.org/fscsd/annual_report.htm)

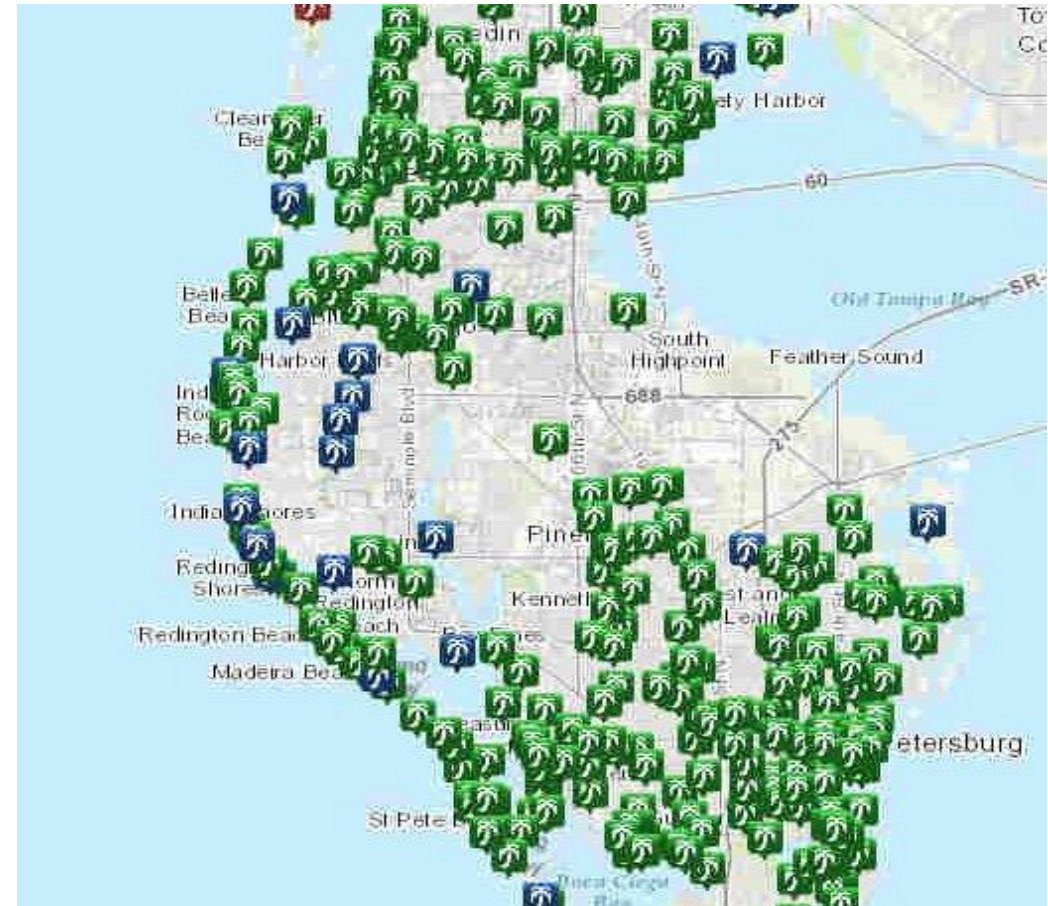
The Taxing District Board believes it is time to increase the millage/tax rate. An increase in the tax rate would allow us to support community improvements such as a new front entrance sign which is now 40 years old, needed repairs to the Earl Maize Recreation Area and other community improvement projects. This increase represents approximately \$30 per year for a home valued at \$300,000.



# PINELLAS COUNTY PARKS AND RECREATION VENUES



COUNTY FUNDED PARKS



ALL PARKS AND RECREATION AREAS

# FYE 9.30.19 REQUEST

- MILLAGE INCREASE TO .75
- FUNDING FROM COUNTY RESERVES OF \$200,000 TO SUPPORT FYE 9.30.19 EXPENSES FOR
  - PLANNING AND DESIGN OF COMMUNITY SIGNAGE \$100K
  - DOG PARK INSTALLATION EST AT \$80K