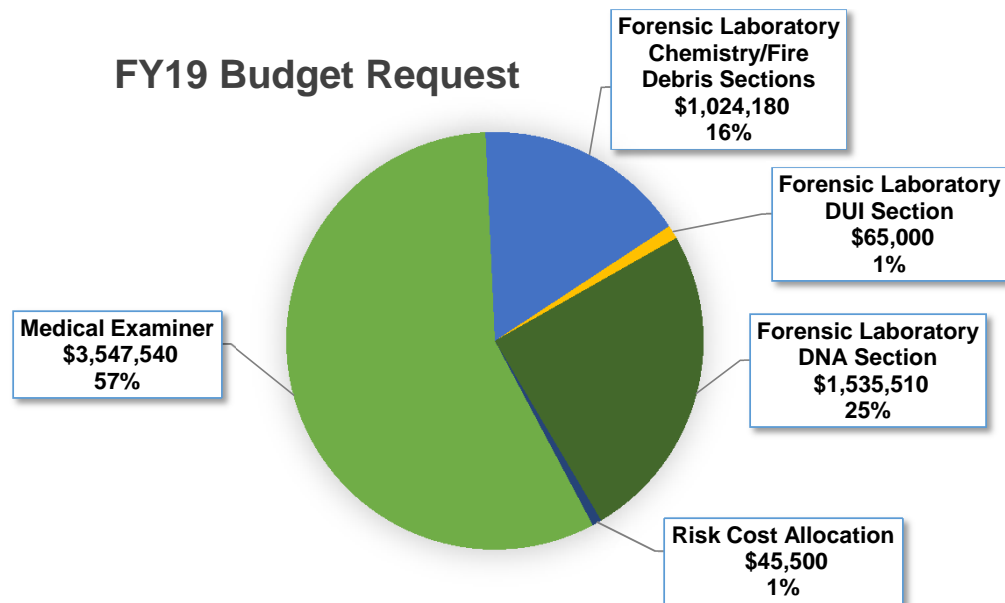


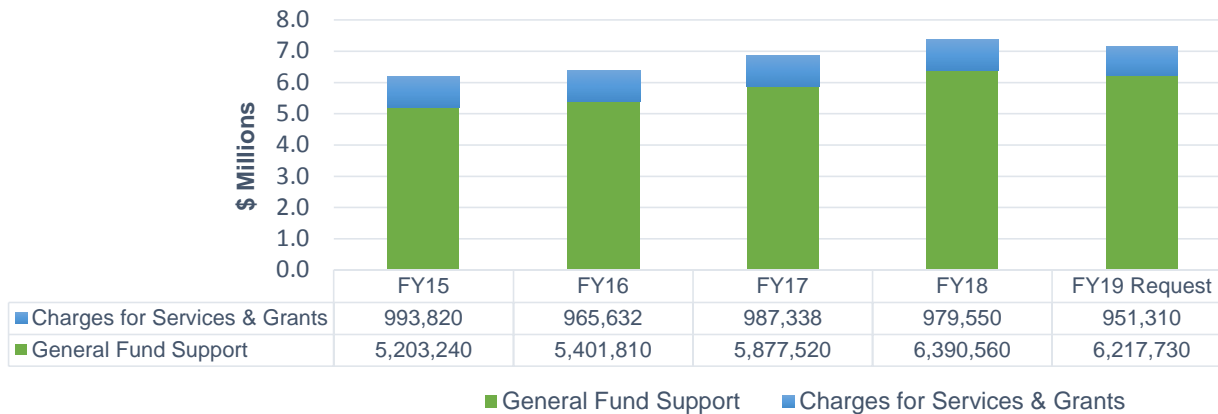
MEDICAL EXAMINER District Six

Pasco & Pinellas Counties

FY19 Budget Request



Budget History



The Medical Examiner Budget is supported by multiple funding sources, including charges for services to Pasco County and grants. The portion of the total FY19 Budget Request (\$6,217,730) related to General Fund support reflects a decrease of \$206,630 (3.2%) compared to the FY18 Adopted Budget (\$6,390,560). The increase of anticipated inflation was offset by the decrease of \$400,000 for a one-time purchase of a Liquid Chromatograph Mass Spectrometer (LCMS) System approved for FY18. The LCMS system has been purchased and is anticipated to be online this year. **The FY19 budget requests meets the target.**

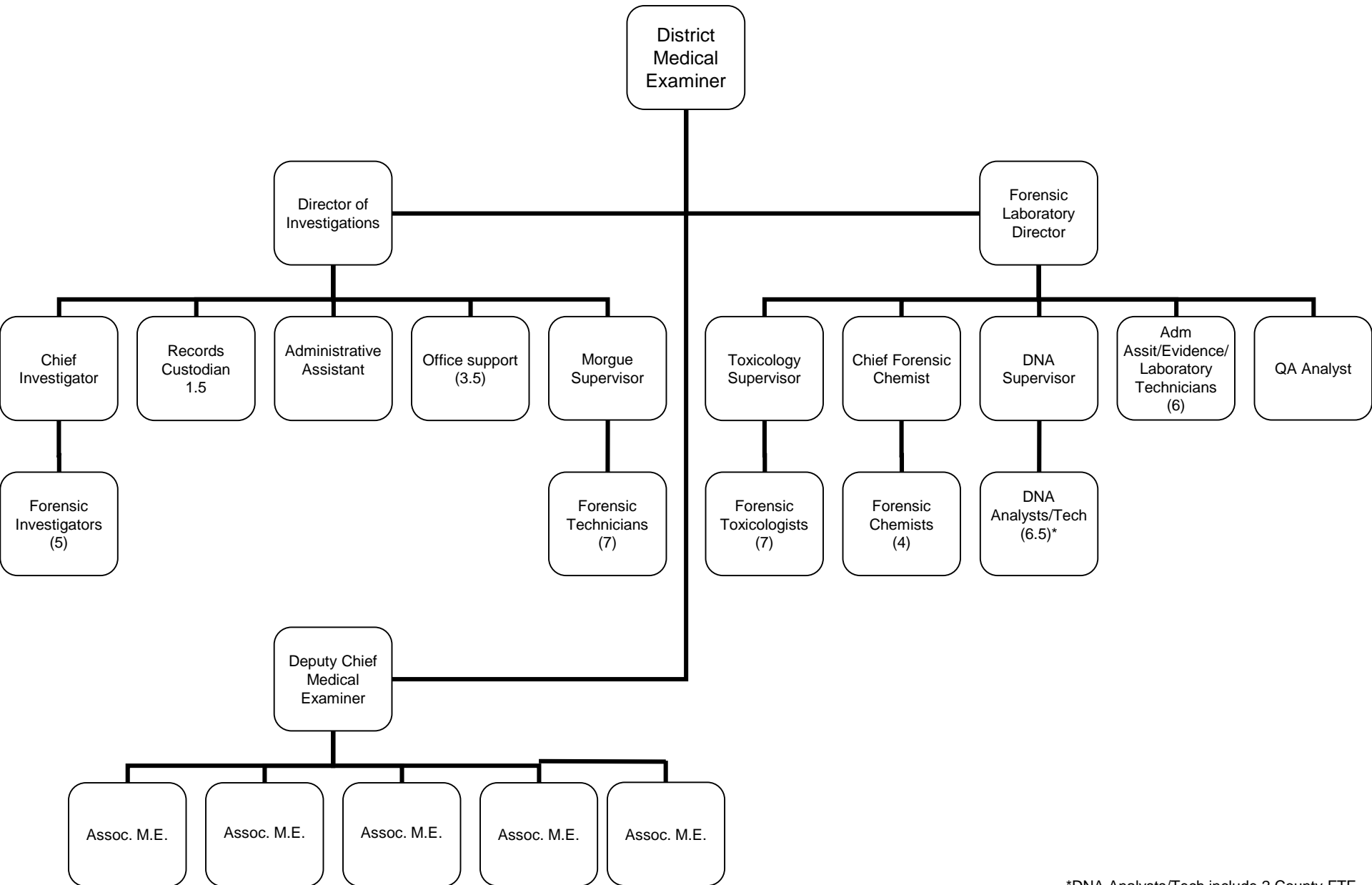
MEDICAL EXAMINER

The Medical Examiner (ME) safeguards the rights of each citizen who dies in Pinellas County by determining the cause and manner of death according to the responsibilities and obligations in Chapter 406, Florida Statutes. The Medical Examiner Department provides both forensic medicine service (investigation of sudden, unexpected or suspicious death) and forensic laboratory service (chemical and drug analyses) to Pinellas County on a contractual basis.

Program Descriptions		FY19	
		Budget Request	FTEs
MEDICAL EXAMINER	Medical Examiner determines the cause and manner of death according to the responsibilities and obligations in F.S. 406.	3,547,540	28.0
Forensic Laboratory Chemistry/Fire Debris Sections Pursuant to F.S. 943	Forensic Laboratory determines chemical composition of items submitted by law enforcement agencies. (a)	1,024,180	26.5
Forensic Laboratory DUI Section Pursuant to F.S. 943	Forensic Laboratory determines the concentration of alcohol and controlled substances in DUI cases submitted by law enforcement and overlaps with Medical Examiner toxicology.	65,000	
Forensic Laboratory DNA Section Pursuant to F.S. 943	Forensic Laboratory determines the DNA profile of samples submitted by law enforcement agencies.	1,535,510	2.0
FY19 Risk Allocation	Cost allocation charges associated with the Risk Financing Fund that accounts for the costs of liability and workers' compensation self-insured claims, as well as property and other insurance premiums for the County.	45,500	
TOTAL		6,217,730	56.5

(a) Forensic Laboratory is composed of 26.5 FTE under the ME and 2 County FTE for CODIS ("Combined DNA Index System" - term used to describe the FBI's program of support for criminal justice DNA databases as well as the software used to run these databases.)

Forensic Science Center



*DNA Analysts/Tech include 2 County FTE for CODIS (Combined DNA Index System)