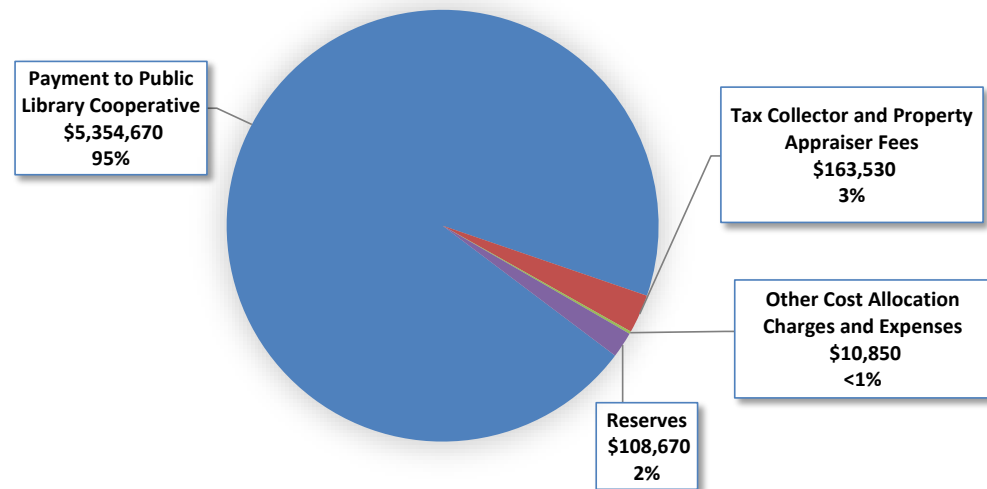


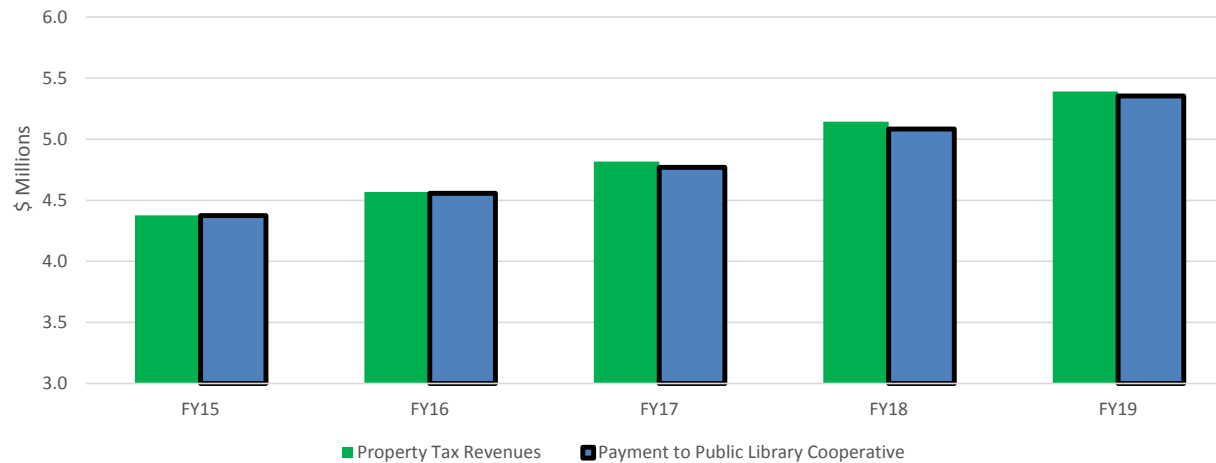
# PUBLIC LIBRARY COOPERATIVE



## FY19 Budget Request



## Public Library Cooperative Budget History (Millage Rate 0.5000)



The Public Library Cooperative (PLC) is primarily supported by a dedicated property tax levy, currently at 0.5000 mills. The payment to the PLC supports administrative expenses (approximately 9%) and payments to the 14 member libraries. The payments are intended to provide funding support in recognition of the services provided by the member libraries to unincorporated residents who are assessed the PLC millage. Distribution of funds among the member libraries is based on a formula reflected in the interlocal agreement that leverages a combination of local support (90%) and non-resident circulation (10%). There are no significant changes anticipated for the PLC budget in FY19.

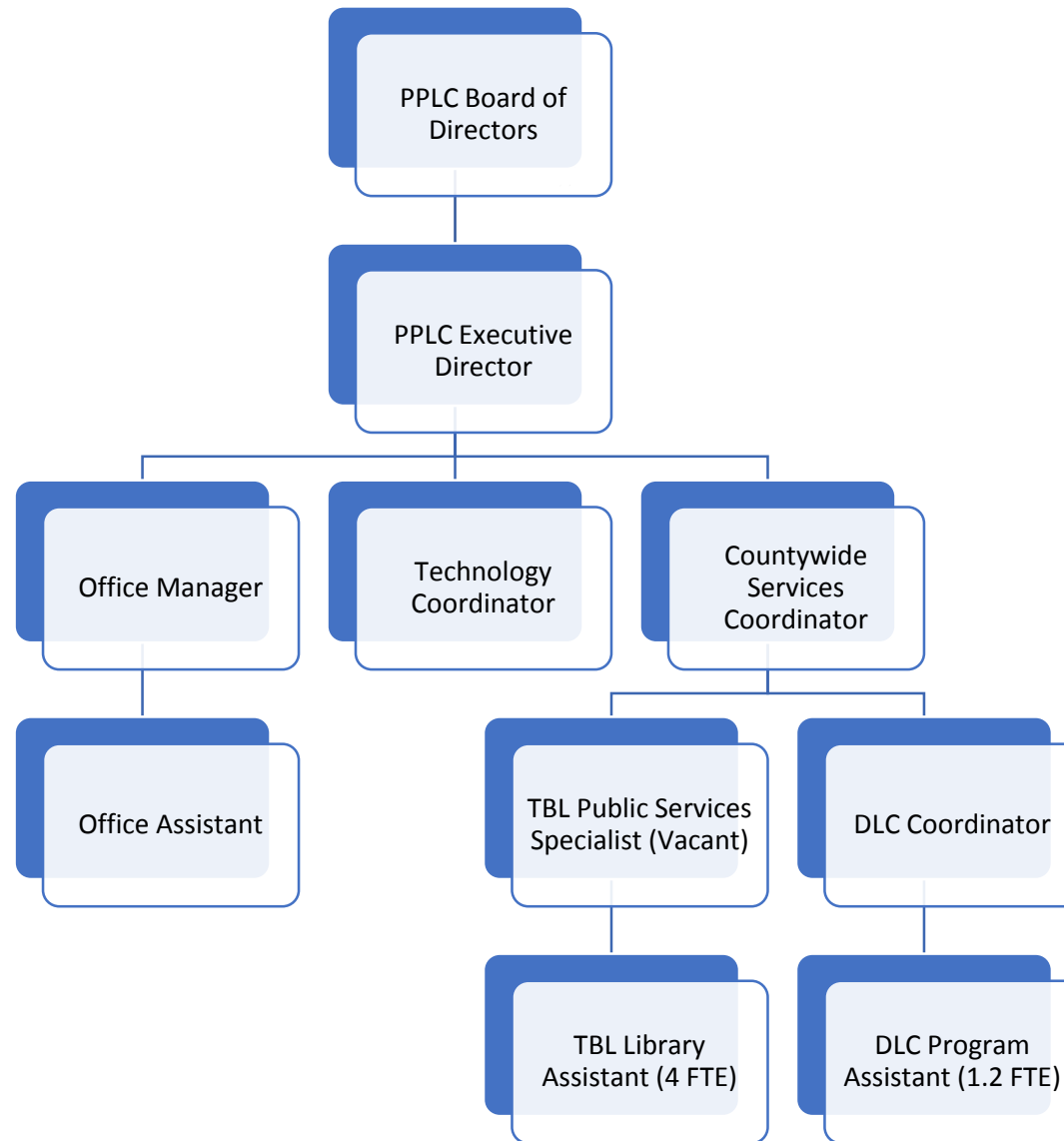
## PINELLAS PUBLIC LIBRARY COOPERATIVE

The Public Library Cooperative (PLC) serves eligible residents of Pinellas County and its member public libraries. The Cooperative serves these groups through the management of county, state and federal funds for library development and by facilitating the sharing of materials and resources among its members. The Cooperative is funded by a millage levy in a portion of the unincorporated areas of the county and per capita dues paid by the participating municipalities without libraries. The maximum millage rate that can be levied is 0.5000 mills.

Program Descriptions	FY18	
	Budget Request	FTE *
<div>Public Library Cooperative</div> <div>In addition to the activities noted above, by offering cooperative library service, the Cooperative is eligible to receive State Aid to Libraries grant funds. State Aid funds a variety of countywide programs including the Talking Book Library for the Blind and Physically Handicapped, the Deaf Literacy Center, Countywide Library Automation System support; and Operating materials support.</div>	5,637,720	3.0
<b>TOTAL</b>	<b>5,637,720</b>	<b>3.0</b>

\* PPLC has 11.2 FTE, including 3 FTE funded by ad valorem taxes. None of the PPLC FTE are Pinellas County Government employees.

## PPLC Organizational Chart



Board approved 02/22/2017