

**FOR MORE INFORMATION
OR TOURS, EMAIL:**

Pinellas County Planning
Redevelopment Section

LealmanCRA@pinellascounty.org

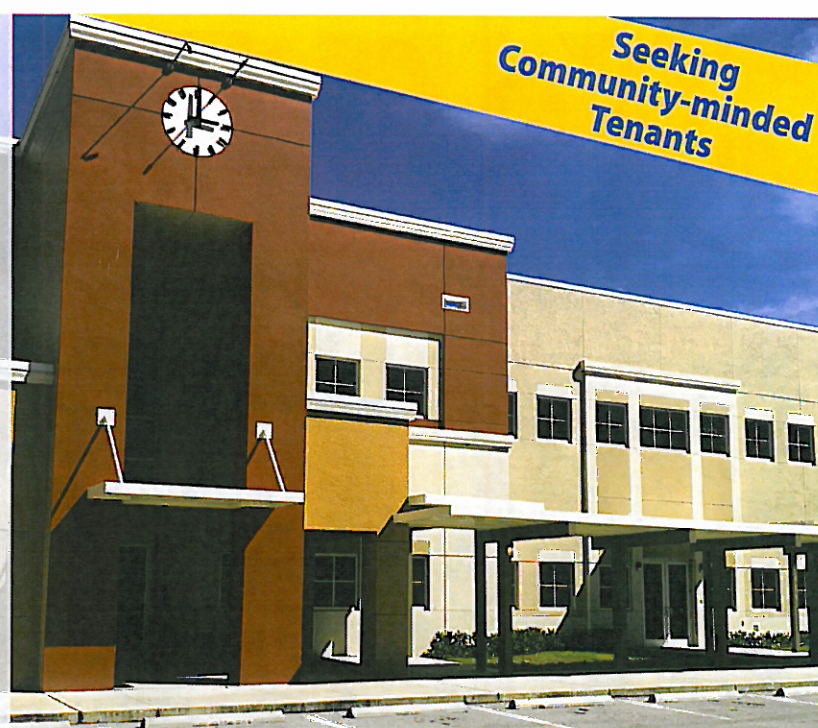


LEALMAN

Community Campus



**Seeking
Community-minded
Tenants**

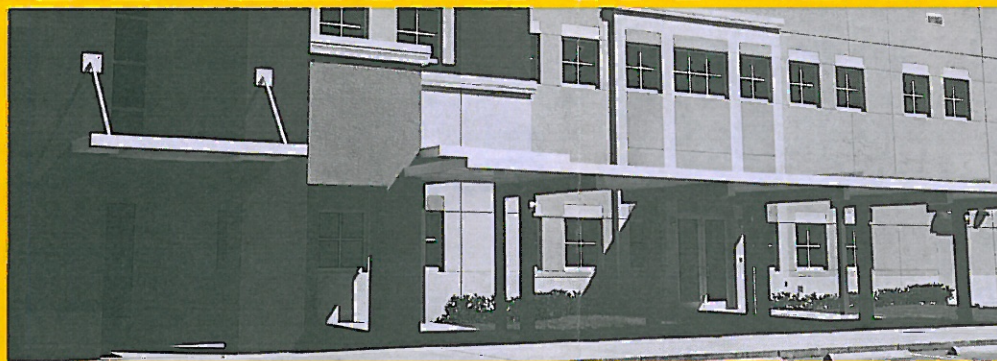
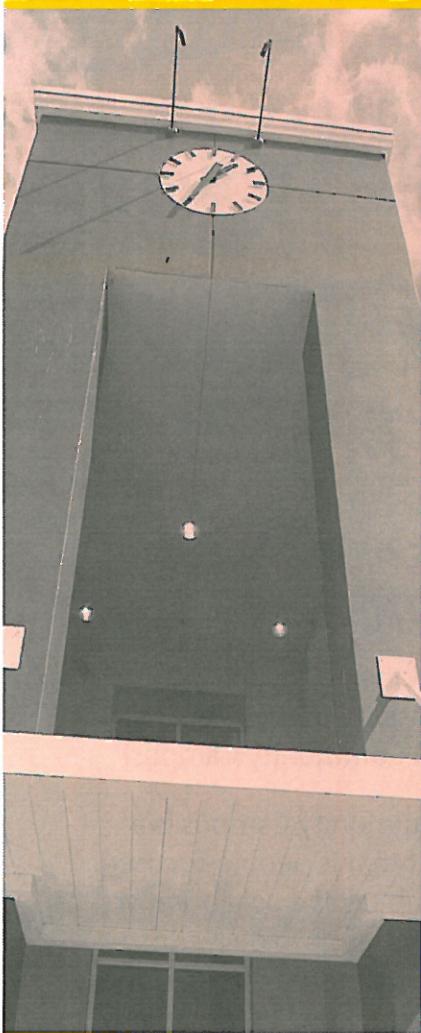


BUILDING PLATFORMS FOR PARTNERSHIPS...

Be part of a unique opportunity by becoming a community partner tenant in the new Lealman Community Campus!

The Lealman Community Campus is a place-based project that is people-focused. This community hub takes a collaborative, citizen-centric approach to delivering services and programs aimed at increasing citizen engagement, building broader social networks, developing pathways to employment and improving school readiness and success, while also creating a sense of place for citizens of all ages.

With Partners We Can Do More!



AMENITIES...

- Over 62,000 square feet of multi-faceted classroom & office space
- 15,000 square foot shared use gymnasium
- Flex space to meet your individual & program needs
- Safe and sufficient parking, Internet and Wi- Fi availability
- ADA accessibility
- Kitchen Space
- Adjacent to Joe's Creek Greenway park
- Centrally located in Pinellas County
- Convenient to 49th St. N, US-19, & I-275
- Interior build-out opportunities

COME. LEARN. SHARE...

- Community Meetings
- Workshop & Mentor Programs
- Adult Education
- Workforce Training
- After-School Programs
- Youth Empowerment
- Small Business & Networking
- Arts & Recreation
- County Extension Offices
- Co-working & Touchdown Space