



Doing Things!

**Pinellas County's Transportation Program –
Coordinated Roles of Forward Pinellas, Planning and
Public Works**

**Board of County Commissioners Meeting
December 5, 2017**



Agenda

- **Alignment with County Strategic Plan**
- **Roles of Forward Pinellas, Planning and Public Works in the development and prioritization process**
- **Developing the Capital Improvement Program**
- **Design and Construction**
- **Process changes in project delivery**

Transportation Program

Pinellas County's Strategic Plan: *Doing Things to Serve the Public*

Mission: Pinellas County Government is committed to progressive public policy, superior public service, courteous public contact, judicious exercise of authority, and responsible management of public resources to meet the needs and concerns of our citizens today and tomorrow.

Deliver First Class Services to the Public and Our Customers

- 5.1 Maximize partner relationships and public outreach
- 5.2 Be responsible stewards of the public's resources
- 5.3 Ensure effective and efficient delivery of county services and support
- 5.4 Strive to exceed customer expectations

Ensure Public Health, Safety, and Welfare

- 2.1 Provide planning, coordination, prevention, and protective services to ensure a safe and secure community
- 2.2 Be a facilitator, convener, and purchaser of services for those in need
- 2.3 Provide comprehensive services to connect our veterans and dependents to the benefits they have earned
- 2.4 Support programs that seek to prevent and remedy the causes of homelessness and move individuals and families from homelessness to permanent housing
- 2.5 Enhance pedestrian and bicycle safety

Practice Superior Environmental Stewardship

- 3.1 Implement green technologies and practices where practical
- 3.2 Preserve and manage environmental lands, beaches, parks, and historical assets
- 3.3 Protect and improve the quality of our water, air, and other natural resources
- 3.4 Reduce/reuse/recycle resources including energy, water, and solid waste

Foster Continual Economic Growth and Vitality

- 4.1 Proactively attract and retain businesses with targeted jobs to the county and the region
- 4.2 Invest in communities that need the most
- 4.3 Catalyze redevelopment through planning and regulatory programs
- 4.4 Invest in infrastructure to meet current and future needs
- 4.5 Provide safe and effective transportation systems to support the efficient flow of motorists, commerce, and regional connectivity
- 4.6 Support a vibrant community with recreation, arts, and culture to attract residents and visitors

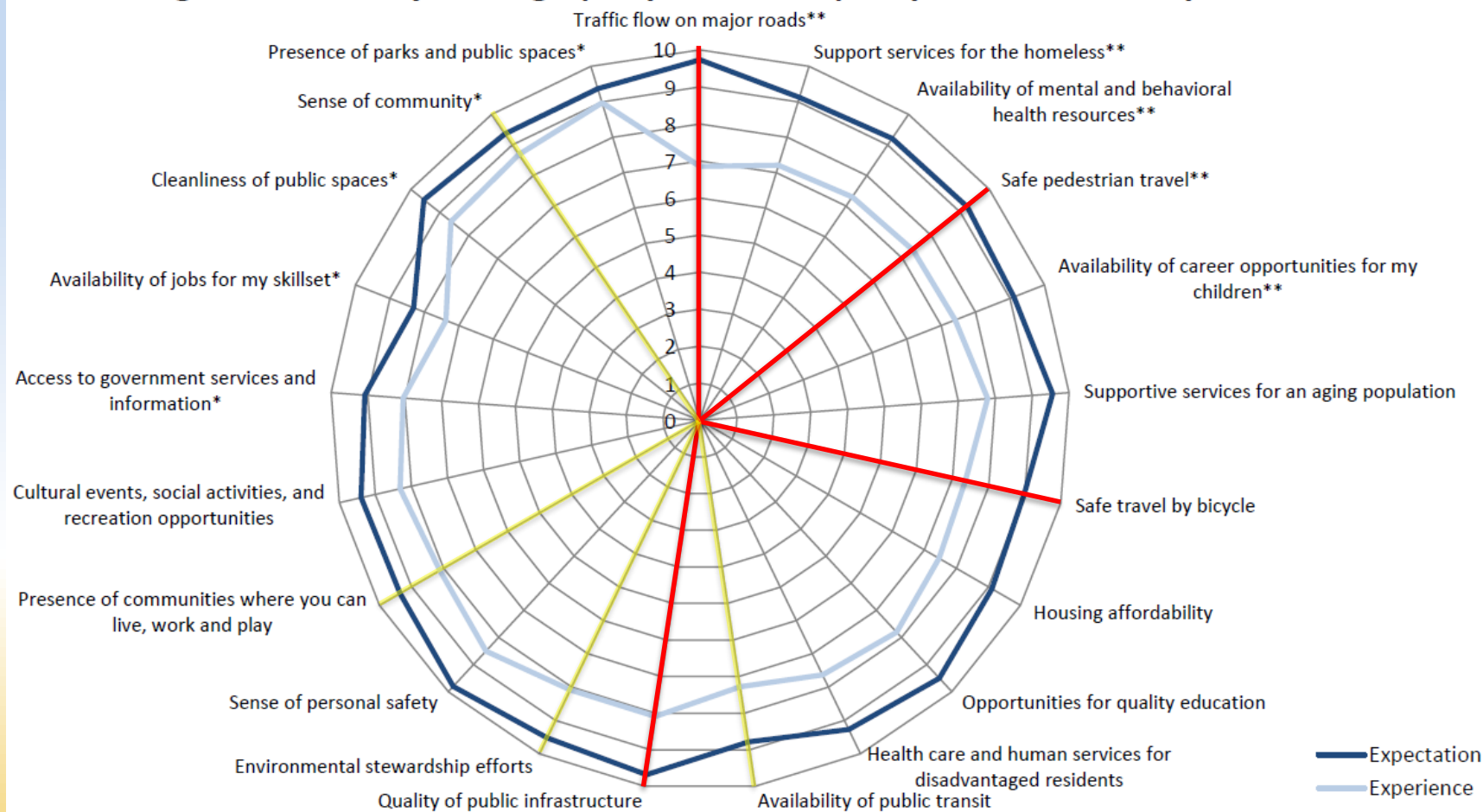
Create a Quality Workforce in a Positive, Supportive Organization

- 1.1 Recruit, select, and retain the most diverse and talented workforce
- 1.2 Leverage, promote, and expand opportunities for workforce growth and development
- 1.3 Make workforce safety and wellness a priority
- 1.4 Maintain a fair and competitive compensation package

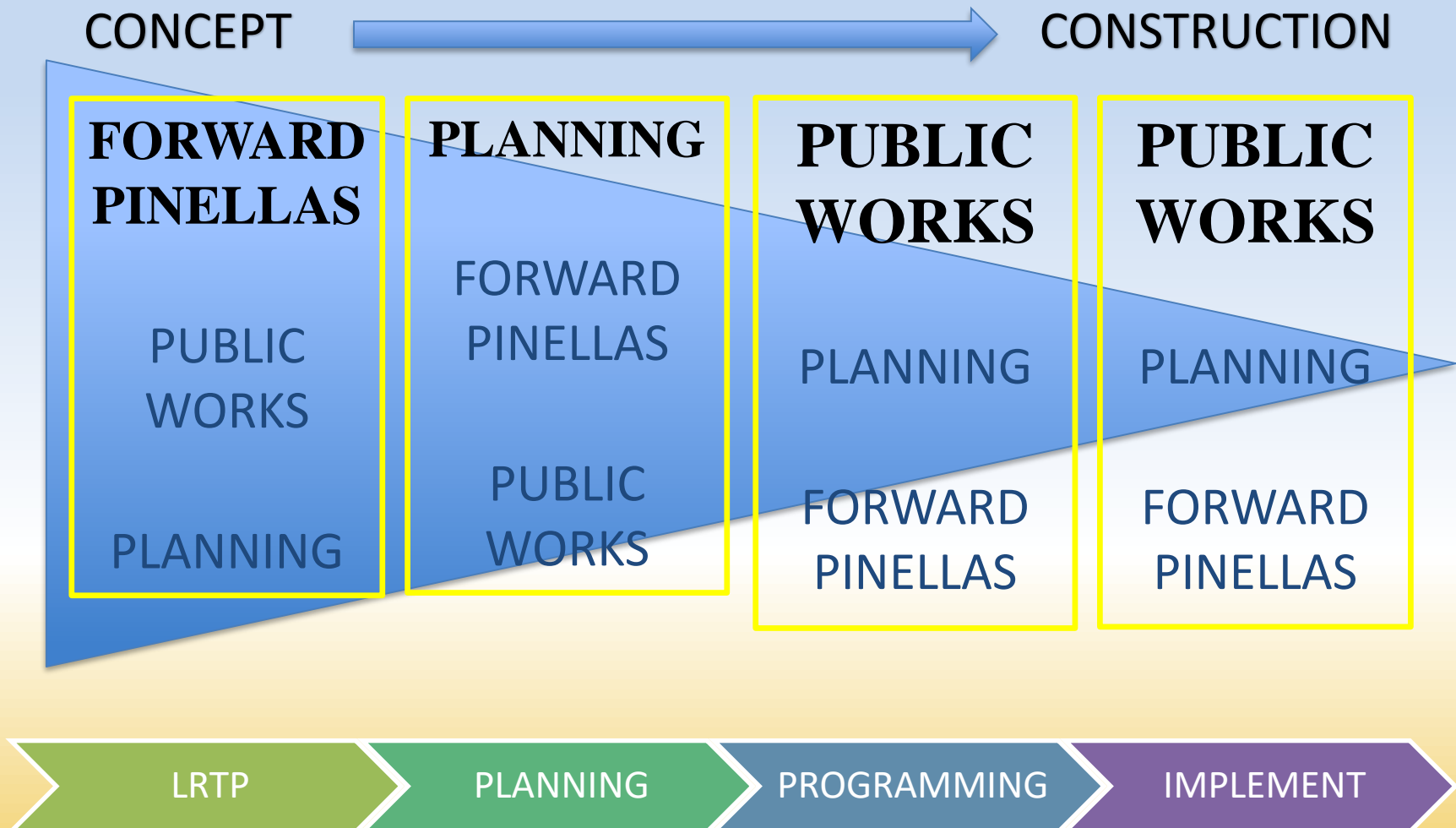
Our Vision: To Be the Standard for Public Service in America

Citizens Survey

Average Community Ratings (10-point scale): Expectation vs. Experience



Overview



The Role of Forward Pinellas

- **Create and support a multi-jurisdictional Countywide Vision**
 - **Countywide Land Use Plan**
 - **Long Range Transportation Plan (LRTP)**
 - **Annual transportation priorities for Transportation Improvement Program (TIP)**
- **Adapt – Build – Connect**
 - **Effective planning builds public wealth**



**FORWARD
PINELLAS**
Integrating Land Use & Transportation

Forward Pinellas Mission:

Providing leadership to align resources and plans that help to achieve a compelling vision for Pinellas County, our individual communities and our region

Countywide Land Use Plan

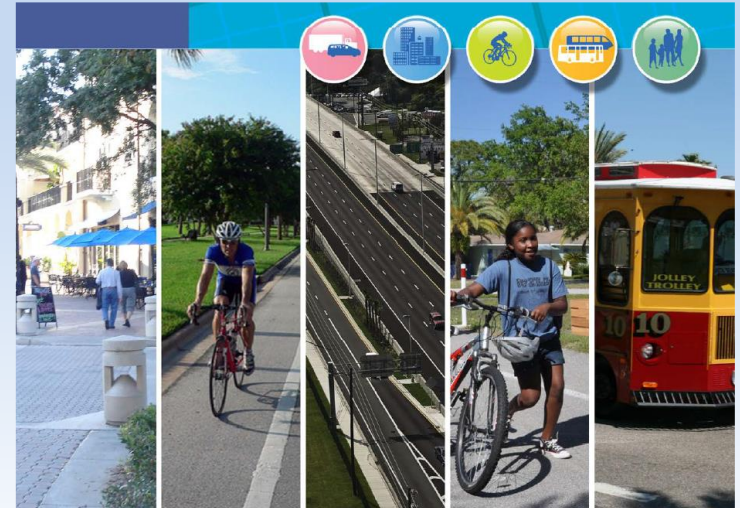
- **Map and Rules**
 - **Guide growth and encourage redevelopment in the right places**
 - **Coordinate plans and manage impacts**
- **Streamlined process**
- **Provide technical assistance**



LU1 → TR2 (land use sets context for transportation projects)

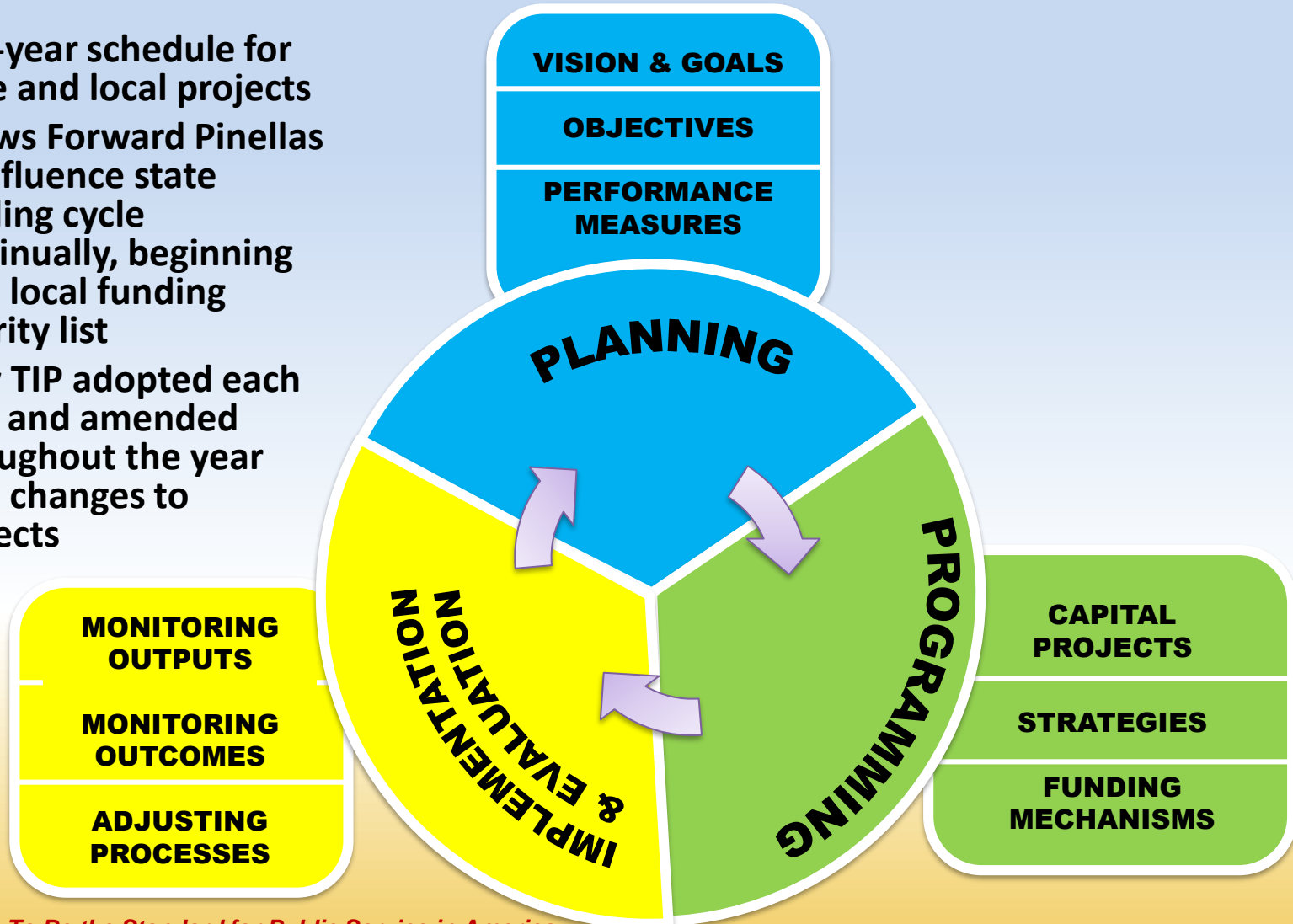
Long Range Transportation Plan

- Long Range Transportation Planning (LRTP)
 - Blueprint for future transportation system and investments over next 20 years – current version is 2040 LRTP
 - Based on goals in plan, transportation projects are identified and prioritized for funding
- Required for state and federal funding
- Updated every five years



Transportation Improvement Program

- Five-year schedule for state and local projects
- Allows Forward Pinellas to influence state funding cycle continually, beginning with local funding priority list
- New TIP adopted each year and amended throughout the year with changes to projects



Adapt – Build – Connect

- What makes Pinellas County unique and distinctive?
 - Reflect in plans and programs
 - Multi-jurisdictional perspective
- Develop strong partnerships to
 - Activate places for people
 - Create better travel experiences
 - Increase competitiveness of modes
- Effective planning builds public wealth



Planning Department Roles

- Long Range Comprehensive Planning
 - What is the vision for the County?
- Community Planning
 - What are the opportunities for communities in unincorporated County?
- Current Planning
 - How will this development proposal impact the County, now and in the future?



Comprehensive Planning

- Guides the vision for the future of the County
- Currently revising Land Development Code and Vision Element
- Future revision of Transportation Element will consider:
 - Shift from development to redevelopment
 - Changes in transportation technology and behaviors (e.g. Uber, increase in online commerce, autonomous vehicles)
 - On-going transportation needs (safety, traffic circulation, resiliency, transportation equity, etc.)
- Public Works and Forward Pinellas will be integral partners in the revision of the Transportation Element



Community Planning

- Planning Department conducts local planning for the communities of unincorporated County
- Transportation issues identified through community planning are coordinated with Public Works and Forward Pinellas
- As plans move from concept to implementation, Public Works takes the lead and coordinates with Planning and Forward Pinellas



Concept Planning - Complete Streets

- **Public Works, Planning, and Forward Pinellas are partners in countywide complete streets initiatives**
 - Leveraging the 3R (Resurfacing, Restoration, Rehabilitation) process to develop context-sensitive solutions
 - Identifying corridors for potential improvements
 - Coordination with Forward Pinellas for consistency with LRTP

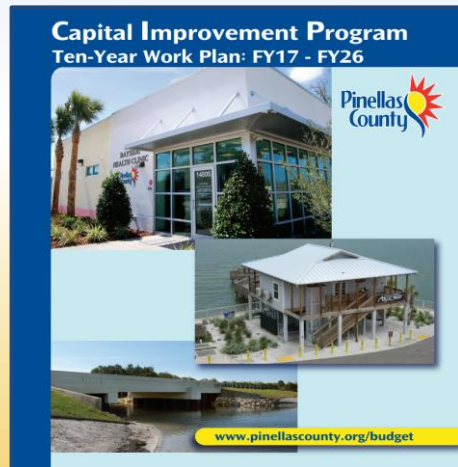


Current Planning

- Development proposals are reviewed for impacts and consistency with the Comprehensive Plan
- Long Range Planning and Public Works coordinate with Development Review Services on variances and design exceptions
- Developments requiring changes to the Countywide Plan are coordinated through Forward Pinellas

Developing the Capital Improvement Program

- Purpose is to develop the Transportation portion of the County's Capital Improvement Program (CIP).
- Considerations include long term maintenance responsibilities – bridges, roadways, etc.
- The CIP contains 12 major transportation programs and 4 major stormwater programs.
- Current transportation needs are approximately \$900M.



CAPITAL TRANSPORTATION PROGRAMS

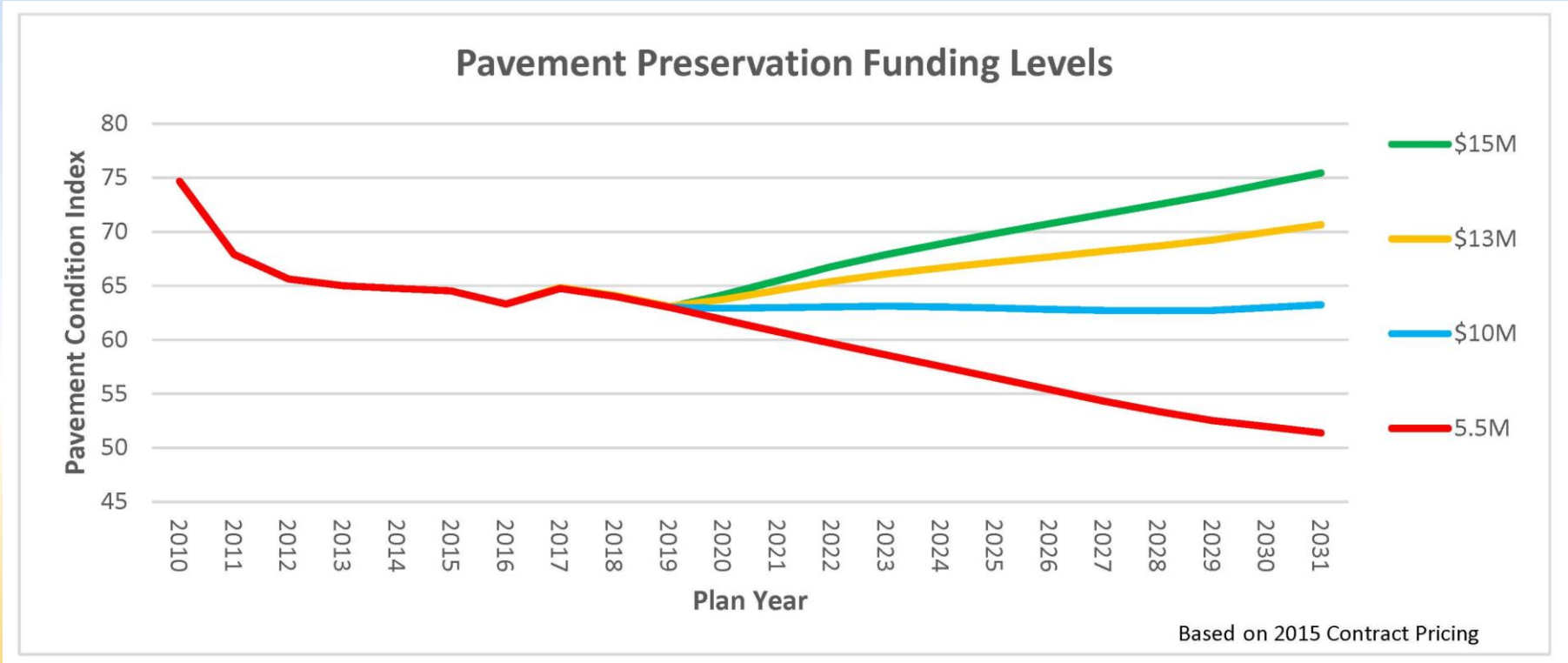
3020	Arterial Road Projects
3021	Intersection Improvement Projects
3022	Local / Collector Road Projects
3023	Pinellas Trail Projects
3024	Road and Street Support Projects
3026	Sidewalk Projects
3031	Bridge Repair and Improvement
3032	Road Resurfacing and Rehabilitation
3033	Advanced Traffic Management Systems
3034	Railroad Crossing Projects
3035	Roadway Underdrain Projects
3036	MSTU Paving Projects

CAPITAL STORMWATER PROGRAMS

3010	Channel Erosion Projects
3012	Flood Control Projects
3013	Storm Water Rehab Projects
3014	Surface Water Quality Projects

Developing the Capital Improvement Program

- Allocate dollars to the various programs based on funding availability, priorities and objectives
- Balance between new construction and maintenance of existing infrastructure



PD&E / PER / Design

- Purpose is to provide detailed plans that satisfy project intent.
- PW role is to prepare design and specifications that meet all applicable design criteria:
 - Access / Median Openings
 - Lane Geometry
 - Turn Lane Lengths
- Forward Pinellas / Planning role is to provide progress reviews, assistance at public meetings, and alerts of **policy changes – continuous coordination is critical.**



DRAFT ALTERNATIVES ANALYSIS REPORT FOR PEDESTRIAN ACCESSIBILITY

FOR

Park Boulevard (CR 694) Sidewalk Improvements (LAP)
from Starkey Road to 66th Street

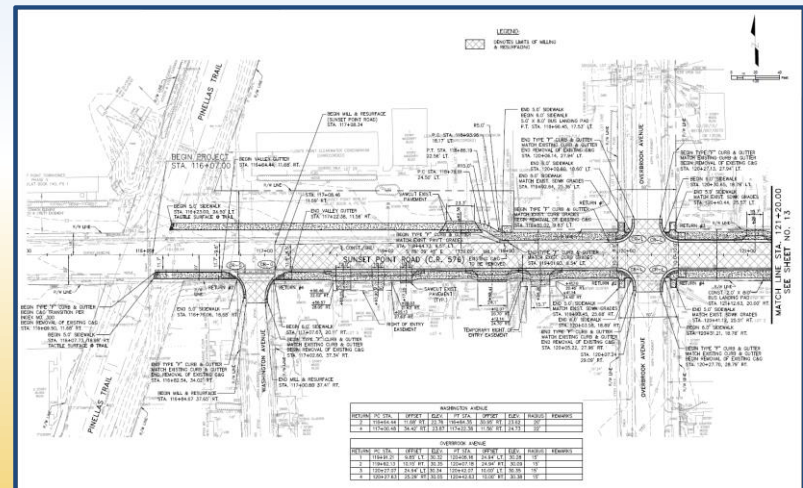
PINELLAS COUNTY PID: 001512A
FINANCIAL PROJECT NUMBER: 424564-4-58-01

Prepared for:



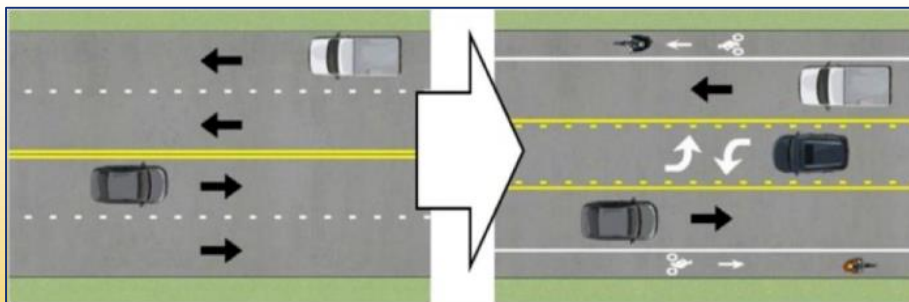
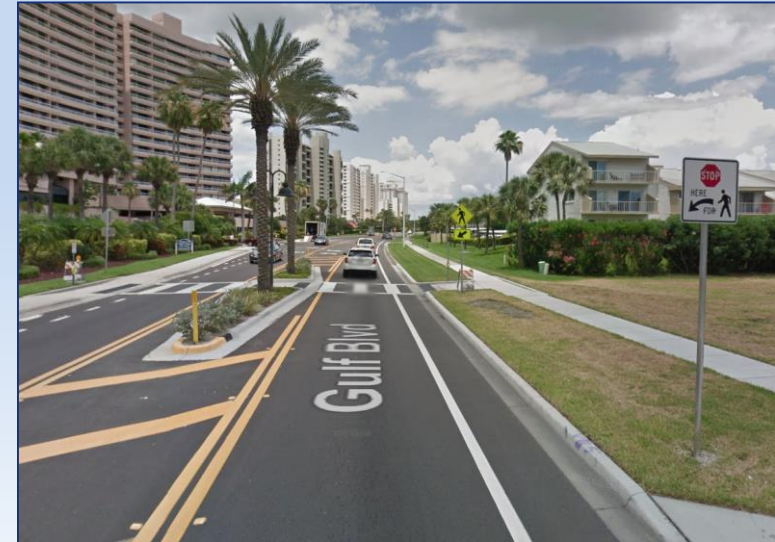
Pinellas County Public Works Transportation Engineering Section
14 S Ft. Harrison
Clearwater, FL 33756

Date Prepared: March 10, 2017



Design

- Recent Policy Changes:
 - Complete Streets
 - Bike Lanes
 - Sidewalks
 - Pedestrian Signals (RRFB's)
- Other Project Needs – drainage, flood control, water quality, trees, etc.
- Until project is ready for construction, plans are regularly updated to meet new standards and policy goals.



Construction

- Focus is to ensure that work is completed in a safe manner, and that the completed project serves the intended function.
- As-built details are documented for future use.



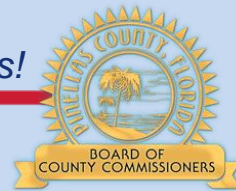
Operations and Maintenance

- Ongoing review to improve safety and traffic flow
 - Resurfacing
 - Intersection Improvements
 - Safety Initiatives
 - Drainage / Flood Control
 - Mowing
 - Environmental
- All groups work together to identify opportunities to complete gaps in the transportation system for:
 - Pedestrians
 - Bicyclists
 - Trail Users



Improving Project Delivery

- Early engagement with all stakeholders
- Improved communication with partners
- Portfolio approach
- Penny 4
- Sea level rise analysis – future conditions
- Asset Management



Thank you!