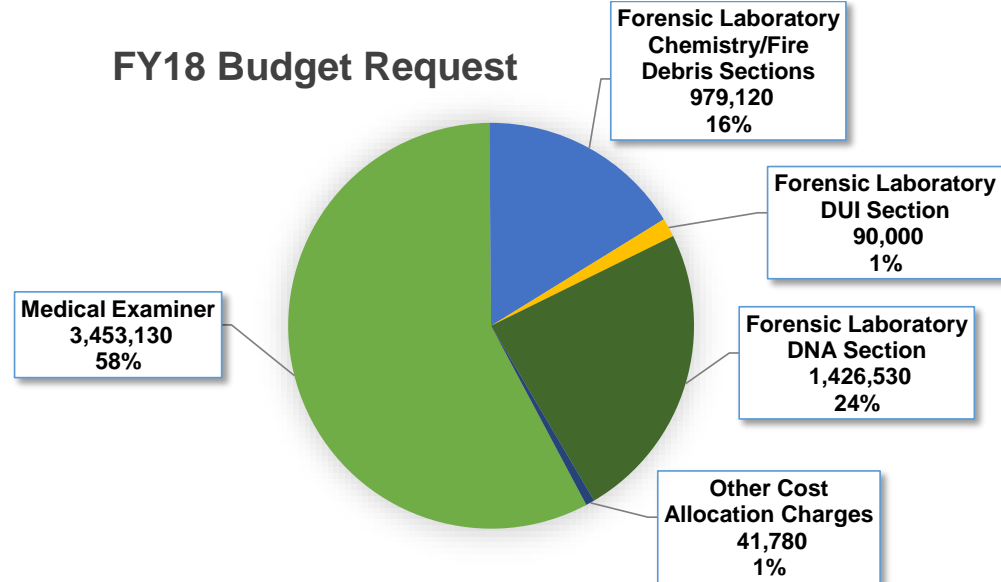


MEDICAL EXAMINER

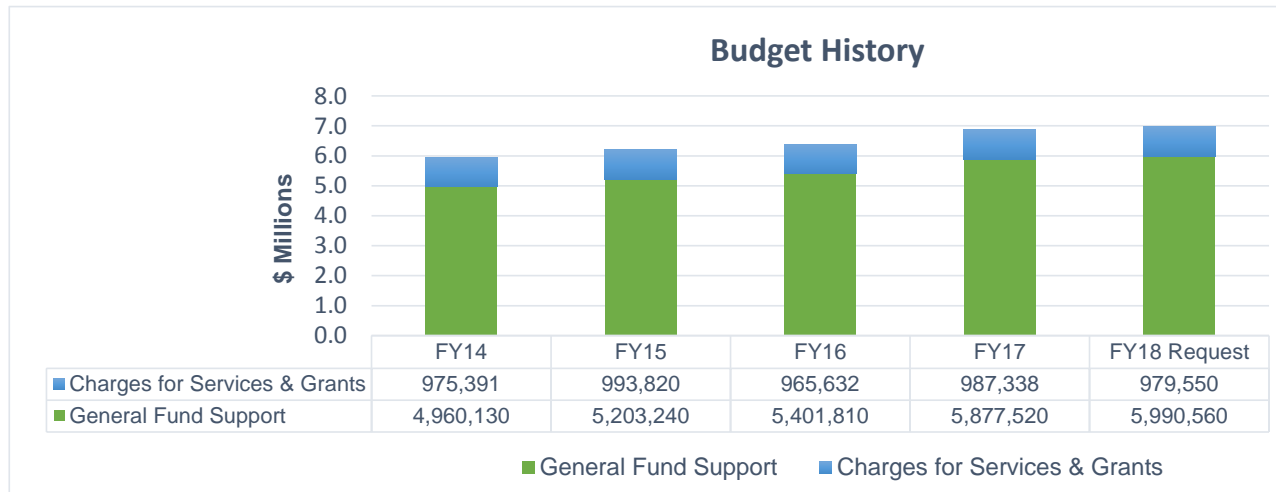
MEDICAL EXAMINER District Six

Pasco & Pinellas Counties

FY18 Budget Request



Budget History



The Medical Examiner Budget is supported by multiple funding sources, including charges for services to Pasco County and grants. The portion of the total FY18 Budget Request (\$5,990,560) related to General Fund support reflects a \$113,040 (2.0%) increase over the FY17 Adopted Budget (\$5,877,520). This increase is driven by anticipated inflation within the budget target. The Medical Examiner is experiencing a higher volume than expected, a 100.0% increase, analyzing DNA for sexual assaults as a result of the new Sexual Assault Kit (SAK) law. In addition, toxicology analyses for opioids has increased. The Medical Examiner has requested an additional \$400,000 as a decision package for a Liquid Chromatograph Mass Spectrometer (LCMS) System to improve drug testing and the ability to analyze data more quickly. The LCMS system will reduce costs associated with outsourcing and increase staff efficiency for the Medical Examiner, replacing old machines at the end of their lifecycle.

MEDICAL EXAMINER

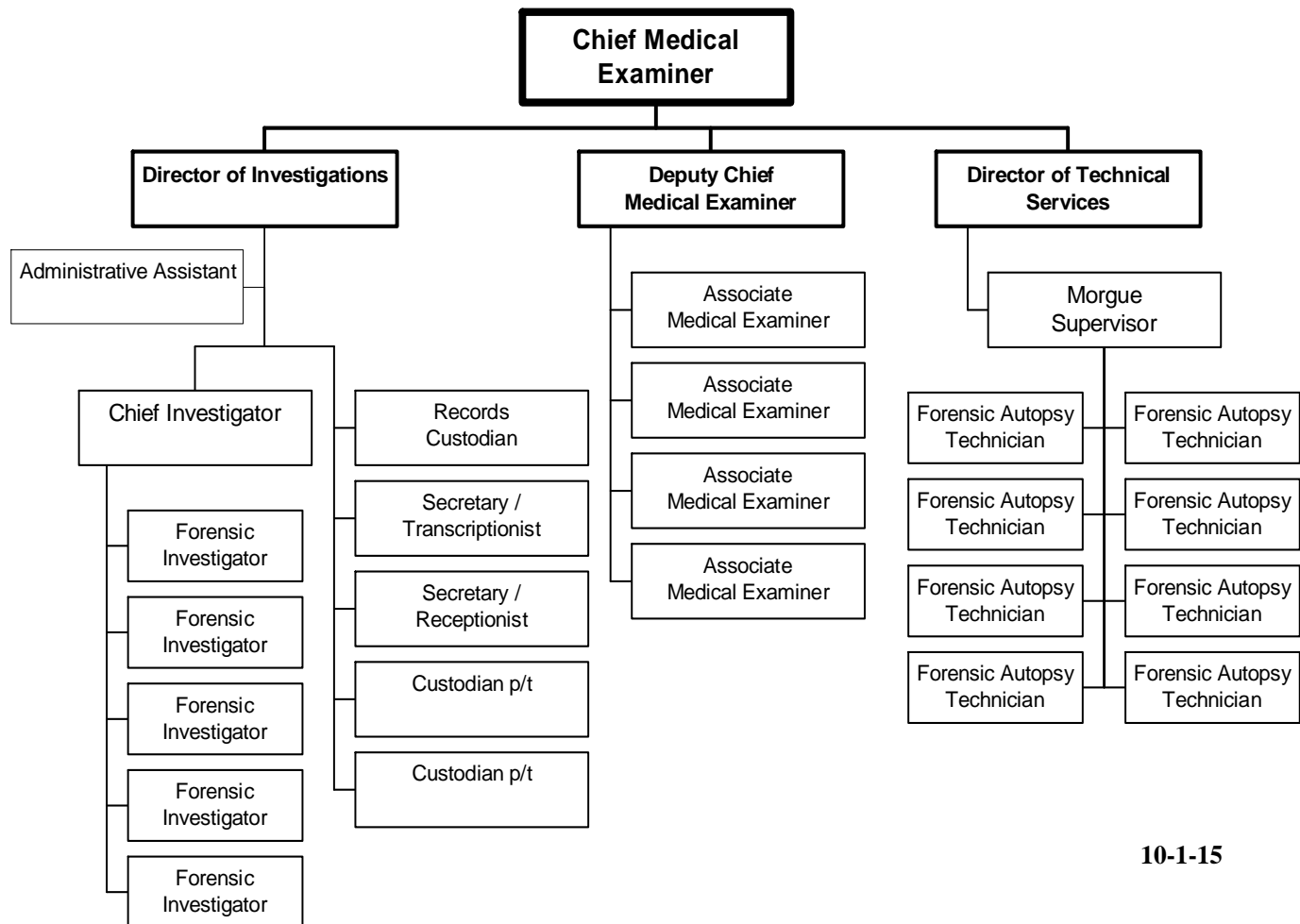
The Medical Examiner (ME) safeguards the rights of each citizen who dies in Pinellas County by determining the cause and manner of death according to the responsibilities and obligations in Chapter 406, Florida Statutes. The Medical Examiner Department provides both forensic medicine service (investigation of sudden, unexpected or suspicious death) and forensic laboratory service (chemical and drug analyses) to Pinellas County on a contractual basis.

Program Descriptions		FY18	
		Budget Request	FTEs
MEDICAL EXAMINER	Medical Examiner determines the cause and manner of death according to the responsibilities and obligations in F.S. 406.	3,453,130	27.5
Forensic Laboratory Chemistry/Fire Debris Sections Pursuant to F.S. 943	Forensic Laboratory determines chemical composition of items submitted by law enforcement agencies. (a)	979,120	25.5
Forensic Laboratory DUI Section Pursuant to F.S. 943	Forensic Laboratory determines the concentration of alcohol and controlled substances in DUI cases submitted by law enforcement and overlaps with Medical Examiner toxicology.	90,000	
Forensic Laboratory DNA Section Pursuant to F.S. 943	Forensic Laboratory determines the DNA profile of samples submitted by law enforcement agencies.	1,426,530	2.0
FY18 Risk Allocation	Cost allocation charges associated with the Risk Financing Fund that accounts for the costs of liability and workers' compensation self-insured claims, as well as property and other insurance premiums for the County.	41,780	
TOTAL		5,990,560	55.0

(a) Forensic Laboratory is composed of 25.5 FTE under the ME and 2 County FTE for CODIS ("Combined DNA Index System" - term used to describe the FBI's program of support for criminal justice DNA databases as well as the software used to run these databases.)

District Six Medical Examiner Office

Organizational Chart



POLICY: 0205P Organizational Chart

Revision #: 1 Effective Date: 11/18/2015

Approved By: Laboratory Director



Scope

The organizational chart provides a pictorial view of structural relationship of the various PCFL job titles.

Policies

