



BCC Budget Presentation for FY'2018
May 2017



Mission Statement

PPLC facilitates a common library experience across the county while preserving the unique attributes of individual libraries.



Vision Statement

PPLC Connects Communities.



2016-2017 Board of Directors

Bill Berger, Office of Management & Budget, Pinellas County

Mary Campbell, Director, Pinellas County Extension

William B. Horne II, City Manager, Clearwater

Doug Lewis, City Manager, Pinellas Park

Sherry McBee, Leisure Services Administrator, City of St. Petersburg

Canaan McCaslin, Special Assistant to the County Administrator

Jim Parent, Consultant, SavanTech Consulting, Inc.

Karen Roth, Manager, Baycare Medical Libraries

Henry Schubert, City Manager, Largo



Member Libraries

Clearwater Public Library System (5)
Dunedin Public Library (2)
East Lake Community Library
Gulf Beaches Public Library
Gulfport Public Library
Largo Public Library
Oldsmar Public Library
Palm Harbor Public Library

Pinellas Park Public Library
Safety Harbor Public Library
St. Pete Beach Public Library
St. Petersburg Library System (7)
Seminole Community Library
Tarpon Springs Public Library

Belleair Shores –member city

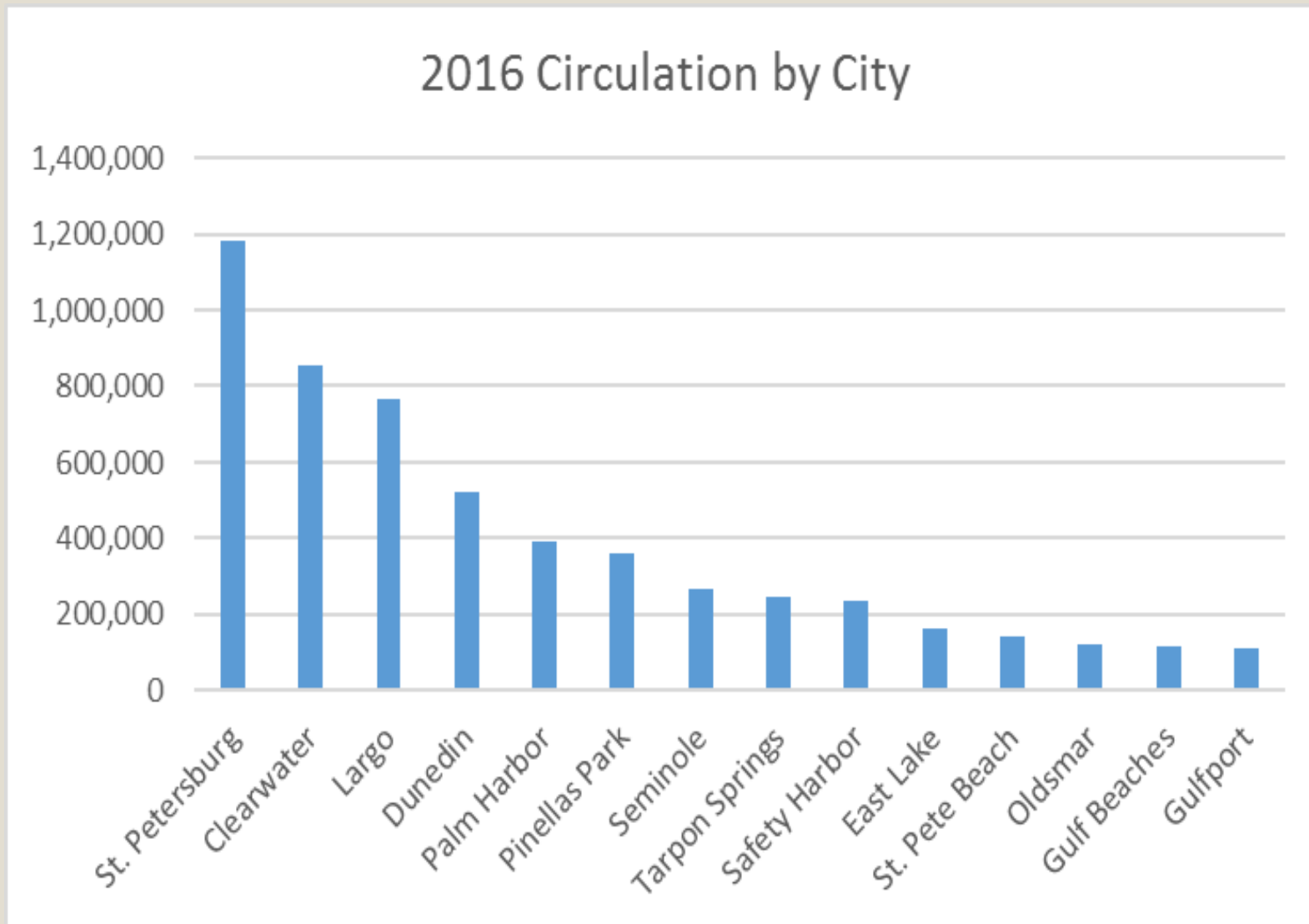


Member Services



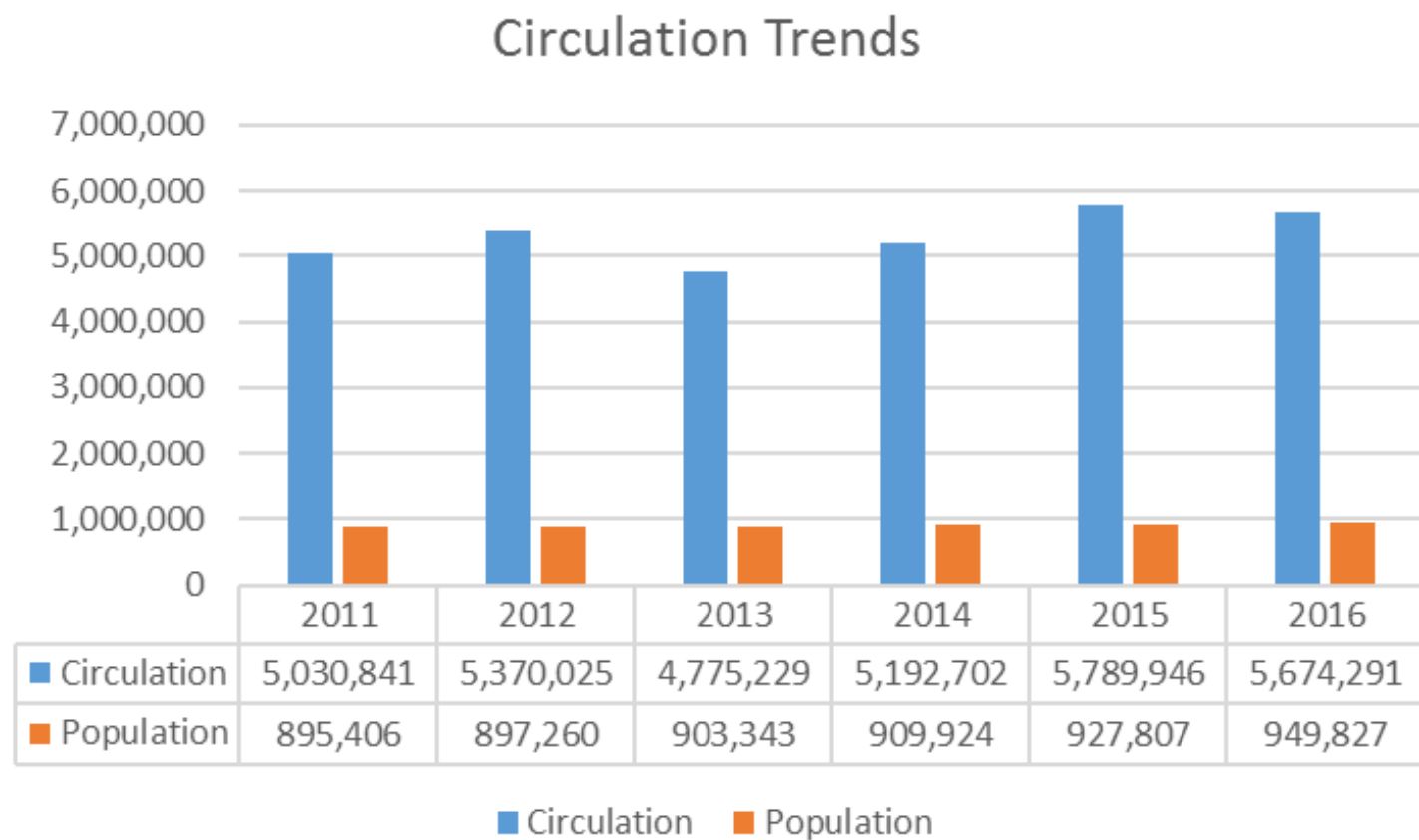
FY' 16
Total circulation:
5,674,291

Circulation includes tangible library items as well as Digital items: *electronic books, audiobooks, movies, and magazines.*





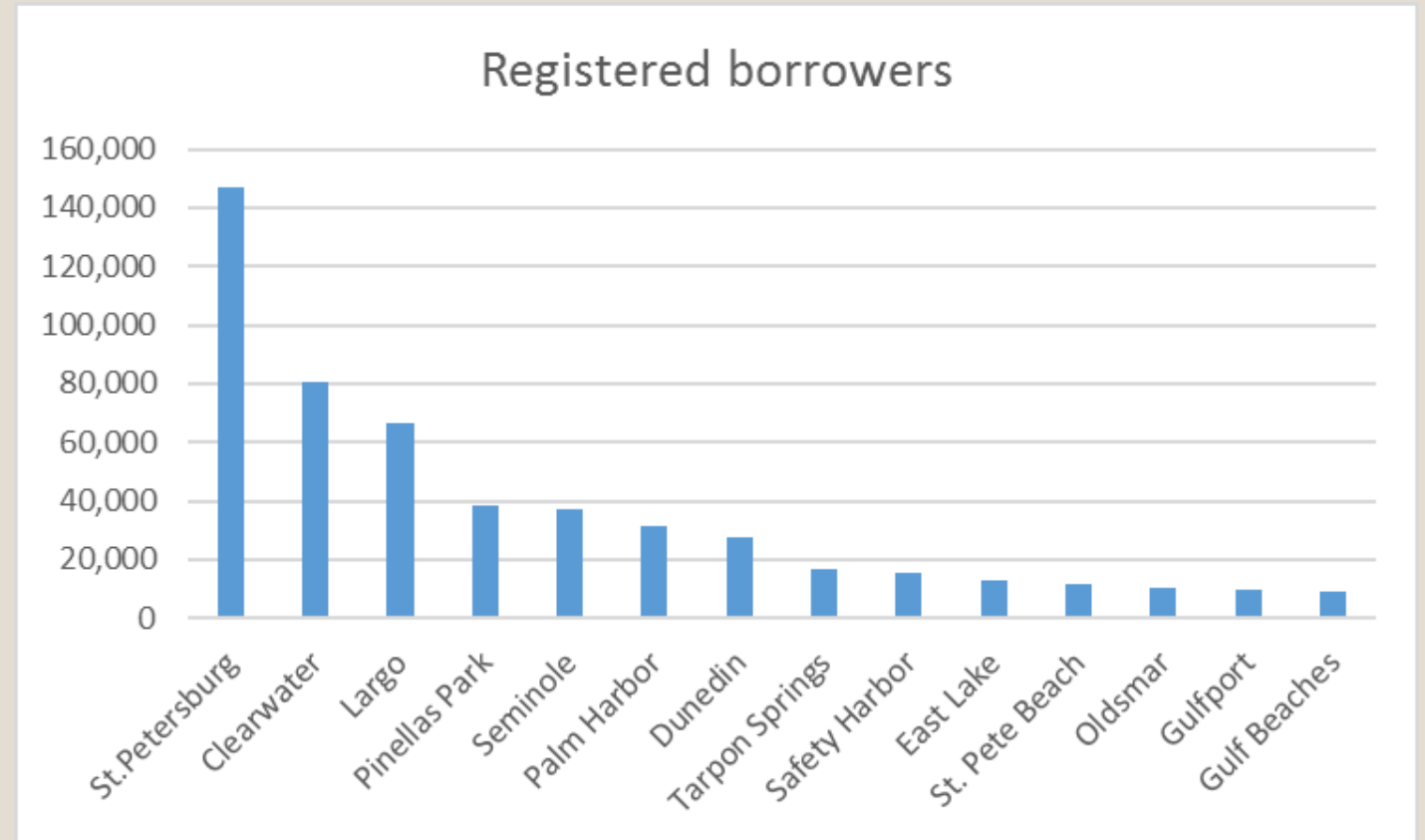
Circulation Trends by Fiscal Year





FY`16 Registered borrowers: 514,186

Registered borrowers includes city residents, unincorporated Pinellas county residents, including fee based registrations, and registered reciprocal borrowers from adjacent counties.





Database usage

Ancestry
Genealogy

415,866

A to Z
Databases

164,527

Pronunciator
Online language learning and testing

5,649



AtoZ Databases usage

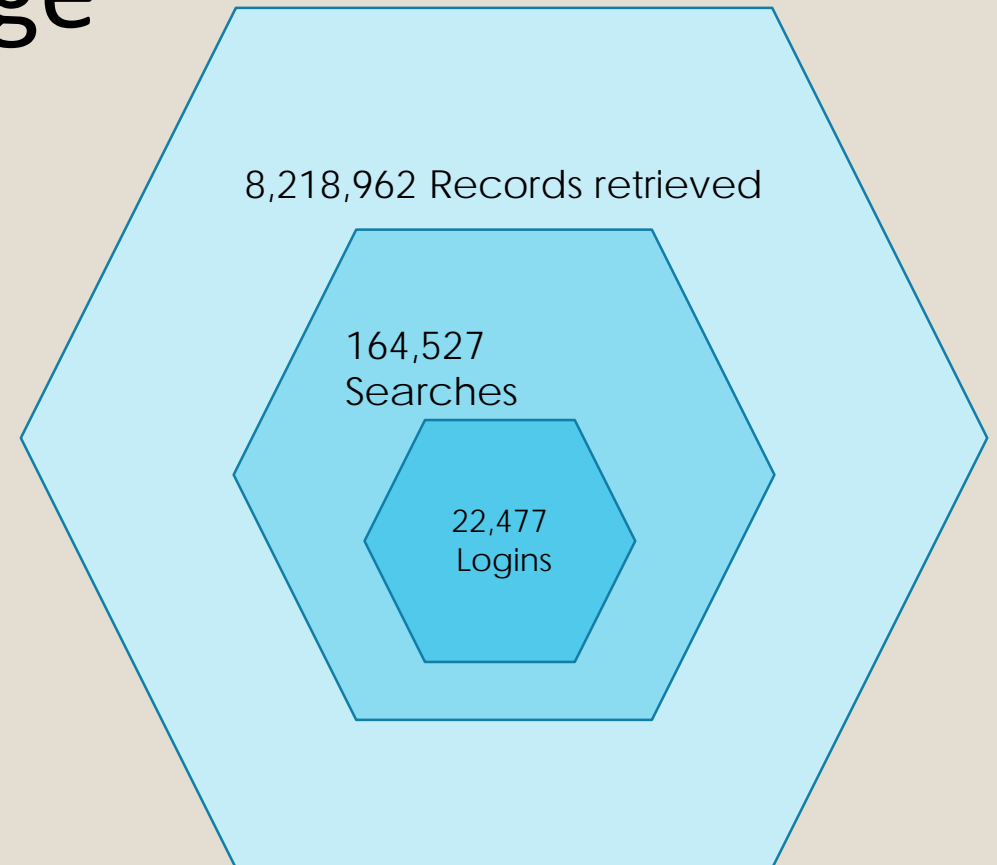


FREE:

- Business Profiles
- People Look-up
- Mailing Lists & Sales Leads
- Job Search, Résumé & Cover Letter Templates
- Background & Criminal Search

- 30 million business & executive profiles
- 220+ million residents
- 7 million real-time job listings
- And more

Typical users include:
Small businesses
Job seekers
Market researchers
Non-profits





Connecting with patrons

website hits (www.pplc.us)

407,942

Mobile App uses

2,161,773



Partnerships

Tampa Bay Ukulele Society FY'16



Ukulele Lending Library Program

- 20 Ukulele kits donated
(*Ukulele, tuner, book, and DVD*)
- 52 Workshops held at 13
libraries with 585 attendees



Reading with the Rays

Summer Reading Program

- Encourages children to read and visit libraries by offering Rays incentives
- 5,856 Children participated in 2016

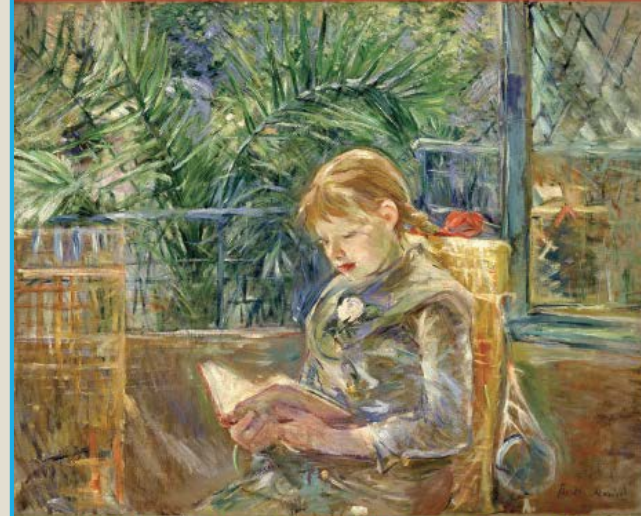


Museum of Fine Arts

Museum Pass Program

- 2 free museum passes to each of the 24 PPLC member libraries
- Free admission to 2 adults and 3 children per pass
- Kick-off FY'17

CHECK OUT THE MFA



Berthe Morisot, *Reading (La Lecture)*, oil on canvas, Museum purchase in memory of Margaret Acheson Stuart

Thanks to a partnership, the Museum of Fine Arts, St. Petersburg and the Pinellas Public Library Cooperative are happy to offer **FREE ENTRY TO THE MFA!** Present this museum pass to library circulation staff and receive a PPLC receipt to bring to the MFA admission desk.

HOW THE MUSEUM PASS WORKS

- Each PPLC member library and their branches have two museum passes.
- Passes are available for checkout on a first-come, first-served basis.
- You may check the availability of passes on the PPLC online catalog or by contacting your library's circulation staff.
- Present the receipt from your library to the MFA staff upon entry. The MFA will retain the receipt.
- Admission is valid for up to 2 adults and three children under the age of 18, in the same household.
- There is a checkout limit of one pass per family. Passes may be checked out by adult cardholders.
- Passes are valid for one visit within the 7-day loan period.

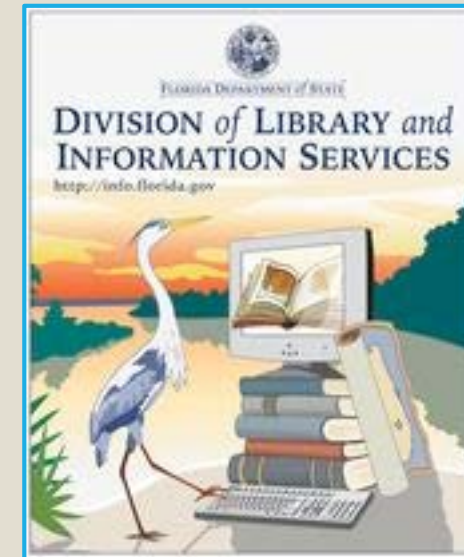


State of Florida

Division of Library and Information Services

Career Online High School

- Offers adults the opportunity to earn an accredited high school diploma
- Prospective students are screened and interviewed before being enrolled in the program
- 40 Scholarships available to qualified learners in Pinellas County.



Juvenile Welfare Board



Campaign for Grade Level Reading

- Pinellas County organizations work together to improve Grade Level Reading in Pinellas County.





Countywide Services

Talking Book Library
Deaf Literacy Center



Pinellas Public Library Cooperative

Talking Book Library

The Pinellas Talking Book Library (PTBL) serves Pinellas and Sarasota county residents unable to read standard print due to visual and physical limitations. 2016 was characterized by re-energized outreach efforts, a growing collection, and a major increase in patrons served.

TBL Program Highlights



- 6,717 active users of the service
- Regular volunteers contributed more than 2,500 hours
- Over 60,000 items in collection
- 172,633 items borrowed
- **Donations** in FY 2016: \$26,287

Collaborating Partners

Partners refer new patrons, provide materials, and coordinate volunteer services.

Audio Bibles for the Blind

Pinellas Council of the Blind

AARP

Pinellas County Supervisor of Elections

FL Division of Blind Services (DBS)

Lighthouse of Pinellas County

National Library Service for the Blind



Pinellas Public Library Cooperative

The Deaf Literacy Center

The Deaf Literacy Center is a library-based literacy program for Deaf individuals and their families. Basic English literacy, sign language, and in-home family literacy instruction provided. Library and information services to the Pinellas County Deaf community provided since 1997.

DLC Program Highlights



- Baby ASL classes: 1500+ participants
- Family ASL classes: 1000+ families
- Regular volunteers contributed more than 4500 hours
- ASL College students from SPC devoted more than 350 hours
- **Donations** in FY'16: \$18,932

Collaborating Partners



Blossom Montessori School for the Deaf

KSS Interpreting

Florida Association of the Deaf

Calvary Baptist Church

Family Center on Deafness

Florida Association of the Deaf

Florida School for the Deaf and Blind

Gallaudet University

Hillsborough Community College

International Plaza and Bay St

Invisible Hands Inc.

Optimist Club of St Petersburg

Pinellas County Schools

Sorenson Communications

St. Petersburg College

University of South Florida

ZVRS



Pinellas Public Library Cooperative

www.pplc.us