

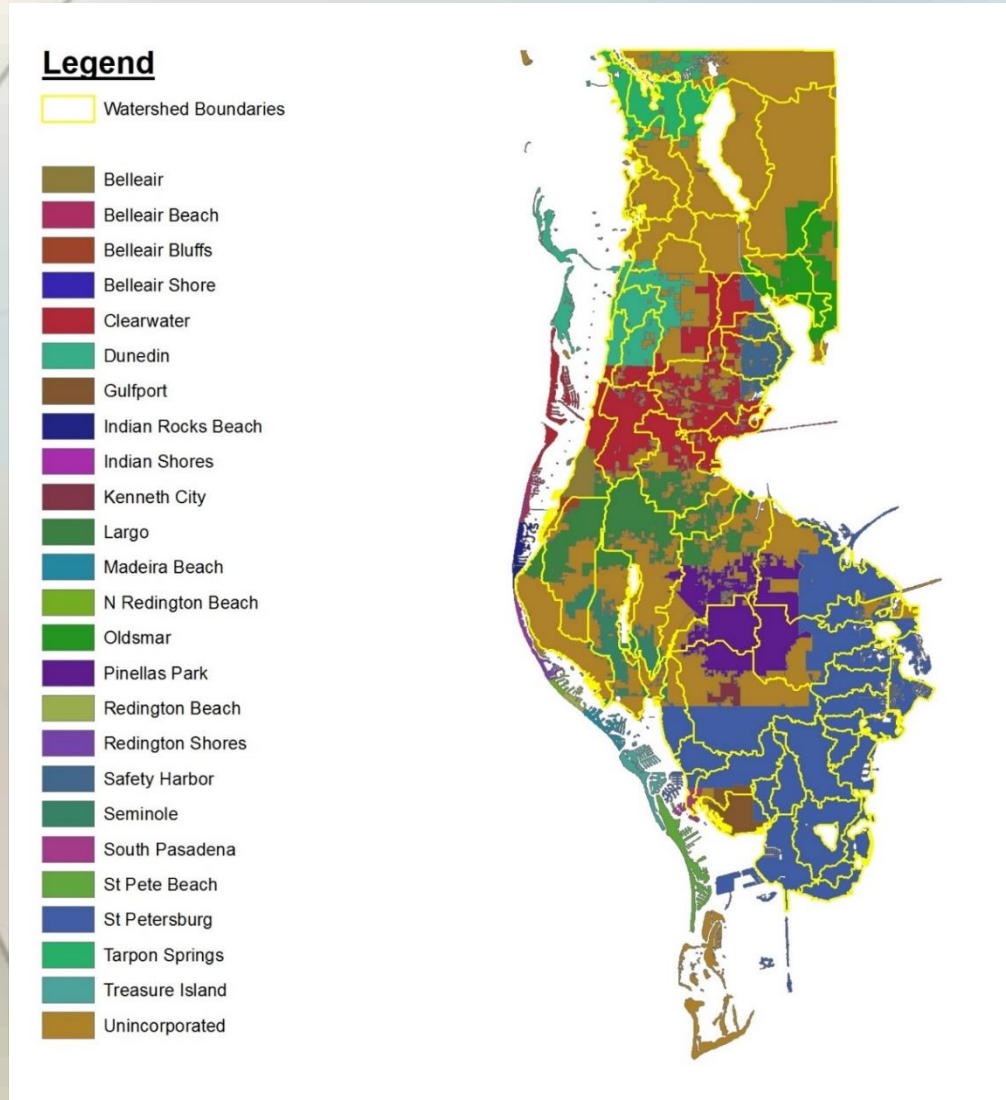
Wastewater / Stormwater Task Force

Initial Action Plan

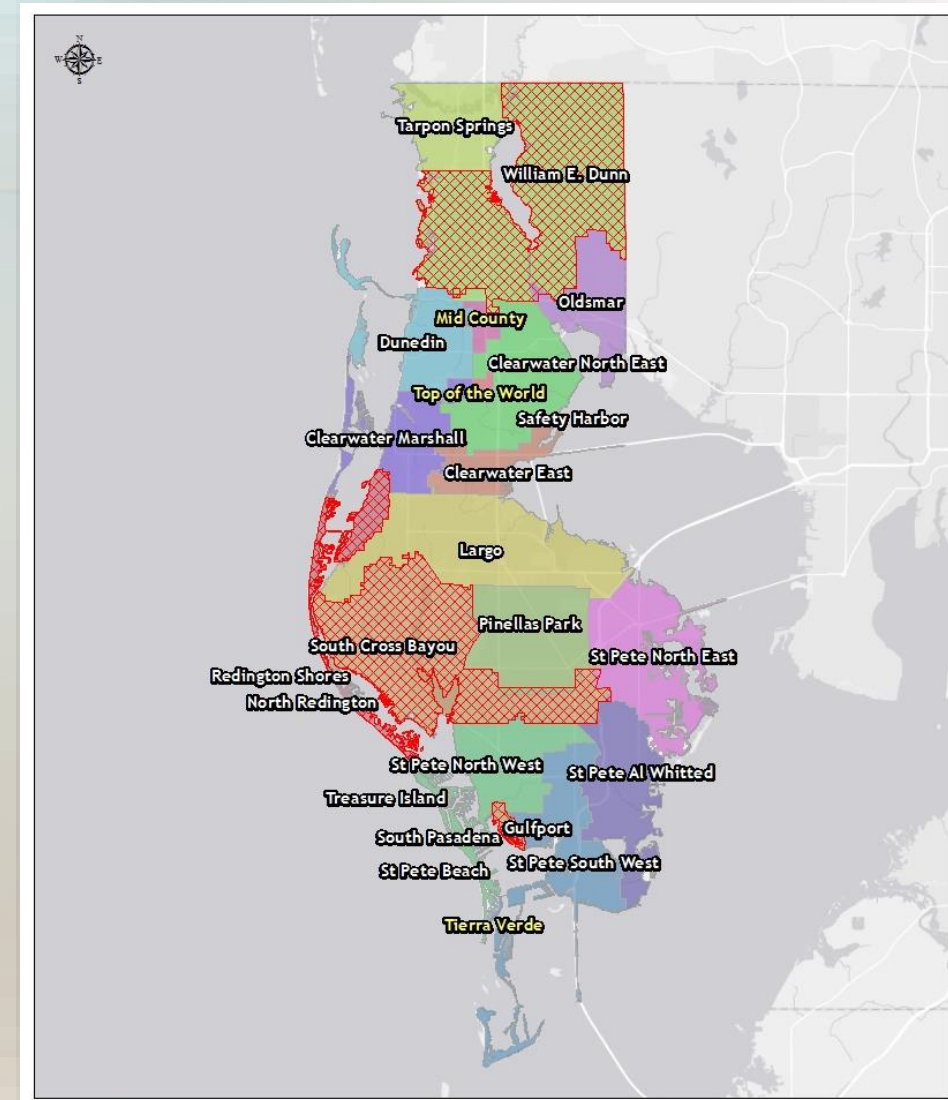
Monday, January 30, 2017

St. Petersburg College - Seminole Campus

Watersheds and Municipal Boundaries



County, City and Private Sewer Systems



COUNTYWIDE UTILITIES

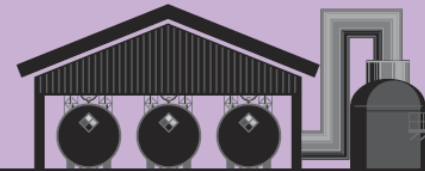
Serve **302,912** Customers
about 1 million people



3,646 Miles of Pipe



14 Wastewater
Treatment Plants

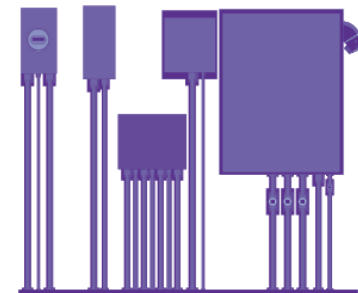


Treat **155 Million** Gallons Per Day

79,165
Manholes



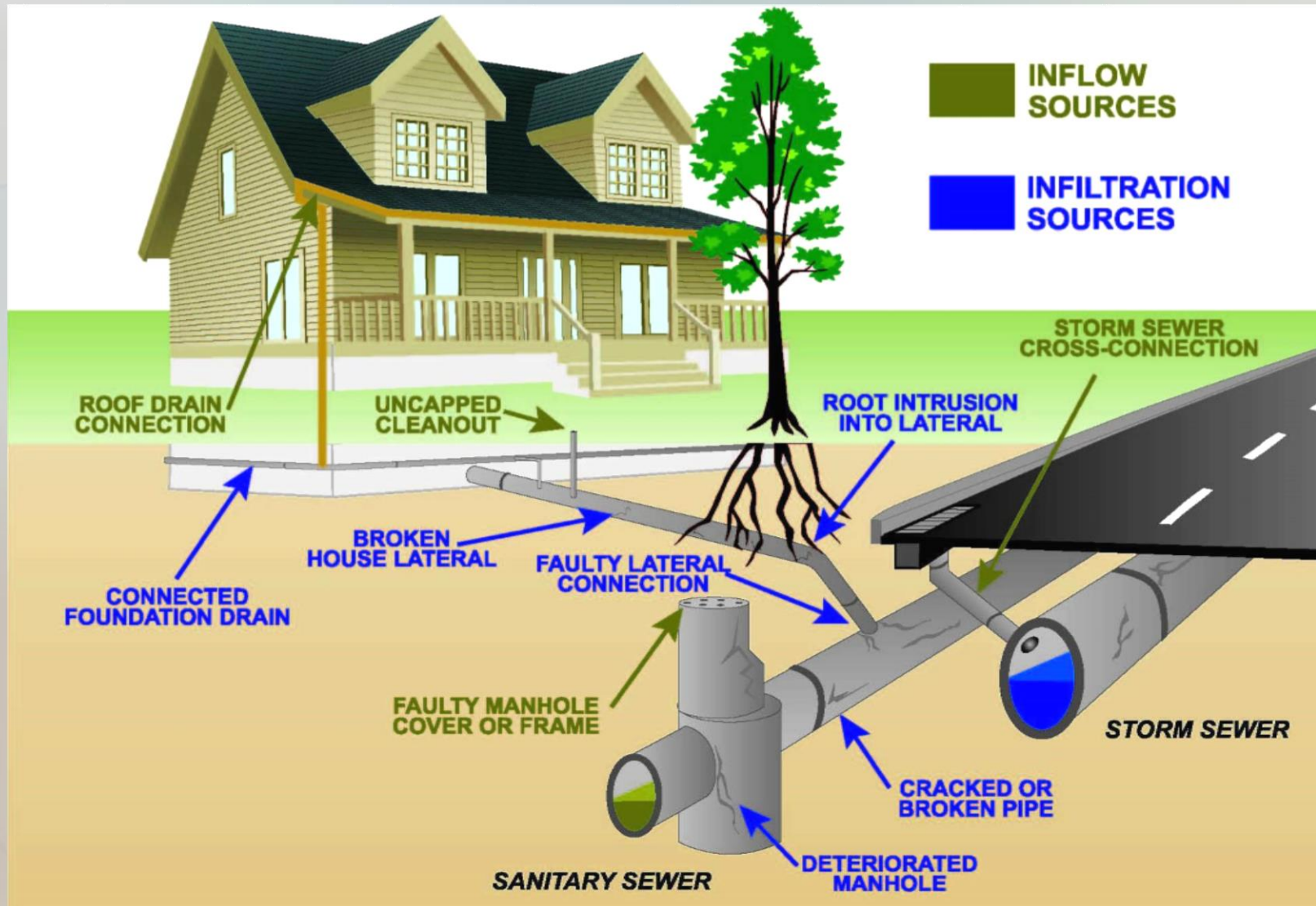
825
Lift Stations



Causes of Sewage Overflows and Associated Level of Control by Utilities

Controllable	Limited Control/Outside of our Control
<ul style="list-style-type: none">• Maintenance of wastewater and stormwater infrastructure, equipment and resources• System capacity• Storm preparation and response	<ul style="list-style-type: none">• Malfunctioning private sewer systems• Line blockages• Extreme weather events• Large scale power outages• Catastrophic equipment failures• Damage to utilities by outside forces

How does groundwater and stormwater get in?



Initial Action Plan

Activity	Timeline
1) Inflow and Infiltration Studies	May 2017 – Sep 2018
2) Address System Hydraulic Bottlenecks	Apr 2017 – Apr 2018
3) Rehabilitation/Replacement Programs for Aging Infrastructure	Jan 2017 – Sep 2018
4) Stormwater Drainage Improvements	Mar 2017 – Sep 2018
5) Resource Sharing/Maximization	Jan 2017 – Mar 2018
6) Develop Public Dialogue Program	Feb – Apr 2017
7) Develop Legislation, Regulations, Local Ordinances	Jan – Dec 2017

Long-Term Actions

Activity	Actions
1) Inflow and Infiltration	<ul style="list-style-type: none">• I&I Reduction Projects
2) System Hydraulic Bottlenecks	<ul style="list-style-type: none">• Periodic reassessment of system hydraulics
3) Rehabilitation/Replacement Programs	<ul style="list-style-type: none">• Ongoing Asset Management Program
4) Stormwater Drainage Improvements	<ul style="list-style-type: none">• Reduce stormwater drainage and connections to sanitary sewer system• Infrastructure planning for sea level rise• Watershed plans to coordinate jurisdictional boundaries
5) Resource Sharing/Maximization	<ul style="list-style-type: none">• Ongoing Collaboration
6) Public Dialogue	<ul style="list-style-type: none">• Implement maintenance program for private laterals, sewer systems and lift stations
7) Legislation, Regulations, Local Ordinances	<ul style="list-style-type: none">• Adoption of local ordinances and state legislation