



Florida Dream Center, Inc.

4017 56th Ave N. St. Petersburg, FL 33714

(O) 727-851-9074 (F) 727-851-9954

www.FloridaDreamCenter.org

October 28, 2022

Pinellas County MSTU Funding

Reference #: 25441611

Mr. Moore,

This letter is being provided as a clarification to our MSTU submission from 09/30/2022.

In the attached submission we included three walk-in coolers.

1. Nor-Lake Locker KODB814-C 8'x14' Outdoor Walk-In Cooler - \$17,801.00
2. Norlake 11x13x8-7 Fast-Trak Indoor Walk-in - \$19,448.00
3. KaTom Artic BL146 COMBO-C-R Indoor Walk-In Refrigerator/Freezer 13'8"x6'x7' 8-1/2" - \$23,197.00

We were limited in the quotes we could obtain because of supply availability. However, we are requesting consideration for option 1, the Nor-Lake Locker KODB814-C. Its outdoor capacity fits our food bank the best.

We also attempted to acquire shipping details, but they will not provide shipping pricing until the product is shipped. Therefore, the Florida Dream Center submitted this \$20,000.00 request.

I hope this answers your questions. Thank you for your assistance in this matter.

Steve Cleveland
President & CEO

sjcleveland@floridadreamcenter.org

727-307-2741 (mobile)

Reference #	25441611
Status	Complete
Full Legal Organization Name (Required)	Florida Dream Center, Inc
Street Address (Required)	4017 56th Ave N
City (Required)	St. Peteresburg
State (Required)	FL
Zip Code (Required)	33714
Organization Website (URL)	www.floridadreamcenter.org
Organization President / Executive Director (Required)	Steve Cleveland
Title (Required)	President & CEO
Phone Number (Required)	727-307-2741
Email Address (Required)	sjcleveland@floridadreamcenter.org
Contact Person Name (if different than above)	Zelda O'Connell
Contact Person Title	Chief Operating Officer
Contact Person Phone Number	727-851-9074
Contact Person Email Address	zelda@floridadreamcenter.org
501(c)(3)? (Required)	Yes
Registered in Florida? (Required)	Yes
Year Established (Required)	2012
Total Organization Annual Budget (Required)	1,008,808.00
Taxpayer / Employer ID # (Required)	46-0663472
Brief Description of Organization and It's Mission (approx. 600 characters) (Required)	Florida Dream Center (FLDC) is committed to inspiring self-sufficiency, by sharing faith through resources, and restoring hope in communities through human services that bridge the gap between vulnerable residents and social-economic equality.
Project Name (Required)	Pantry to Life
Requested Program Budget (Required)	\$20,000.00
Community Need: Describe the problem or need to be	Prior to February of 2022, the FLDC Mobile Food Bank was in a three storage unit warehouse. As the real estate crisis commenced the warehouse was sold and the new owners increased the rent of the unit

**addressed by this project.
(Required)**

by 250%. As a nonprofit FLDC could not afford this rent, deciding to move the Mobile Food Bank to the administrative offices in Lealman. The move damaged one of our walk-in coolers that housed our dairy, meats and fresh produce.

It is imperative that this unit be replaced so that FLDC can continue to collect, sort and distribute fresh and nutritious food to the residents of Pinellas County. In 2021, FLDC distributed over 1,400,000 pounds of food.

Our client demographic includes chronically homeless to low-income/elderly/disabled, multigenerational-housed families. These communities share common characteristics: 22.7% of families with children under 5 live below the poverty level. 27% of households spend more than 30% of their income on housing. 16.7% of adults reported that their household had been authorized to receive WIC or Food Stamp benefits according to our case management software OASIS Insight.

Project Summary: Describe how the project will be fully implemented and how it will address the need or gap in the community. Identify and describe other funding sources, if any, for this project/program. (Required)

Our President & CEO, Steve Cleveland, will manage the planning and implementation of this piece of equipment. Using our refrigeration maintenance repair person and FLDC staff/volunteers, Steve will ensure safe and proper installation.

The installation of the walk-in unit will allow FLDC to distribute nutritional foods that cannot be frozen and are harder to distribute because they need to remain cold. These items include eggs, cheese, some milk, fresh produce and deli products.

Program Outcomes: Describe the time-line by which the project will be implemented including short-term and long-term results. (Required)

This walk-in cooler will increase the amount of fresh and nutritional foods our clients receive by 45%. It will also increase the number of clients served in Pinellas County by 1200 in 12 months.

Describe how your project aligns with the County's Strategic Plan: (Required)

The Pinellas County strategic plan includes the support and promotion of health equity for all residents of Pinellas County, the FLDC mission aligns with this. FLDC programs and services promote self-sufficiency while supporting low-income clients through immediate and long-term services.

Additional Information

[MSTU_Attachments.pdf \(1.63 MB\)](#)

Authorized Signature (Printed Name / Title) (Required)

Steve Cleveland, President & CEO

Authorization Date (Required)

09-30-2022

Last Update

2022-09-30 14:47:43

Start Time

2022-09-30 12:08:14

Finish Time

2022-09-30 14:47:43

IP

Anonymous

Browser

Other

Device

Other

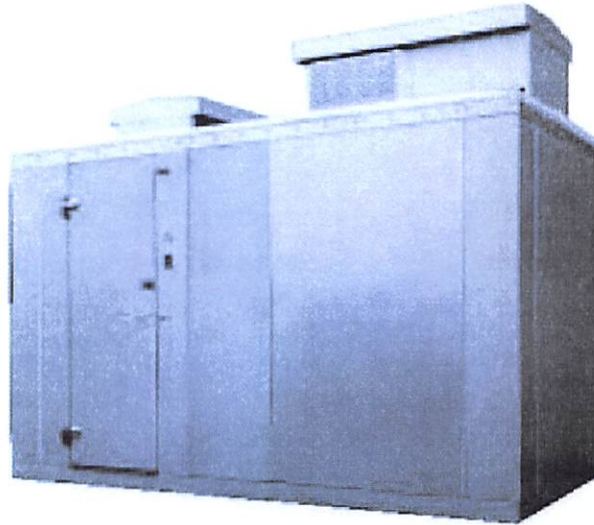
Referrer

N/A



[Home](#) > [Restaurant Equipment](#) > [Commercial Refrigeration Equipment](#) > [Walk-In Coolers & Freezers](#) > [Walk-In Coolers & Refrigerators](#) > [Outdoor Walk-In Coolers](#) > Nor-Lake Kold Locker KODB814-C 8' x 14' Outdoor Walk-In Cooler w/ Floor

Nor-Lake Kold Locker KODB814-C 8' x 14' Outdoor Walk-In Cooler w/ Floor



[f Share](#) [t Tweet](#) [p Pin it](#) [in Share](#)

[Print Page](#)

[0 reviews](#)

Product Code: NORL-KODB814-C

Burkett Price:

\$17,801.00 / Each

[Or From \\$491 / Mo. Apply Now](#)

Availability: Contact us for Current Leadtime

Due to global supply chain issues, actual ship time of this item **may vary from the estimated here**. Please contact us if you want to verify or to discuss other options that may be available sooner.

Add Commercial Refrigerator protection from CPS

2 YEARS

\$169.00

3 YEARS

\$389.00

4 YEARS

\$469.00

5 YEARS

\$699.00

1

ADD TO CART

[Product Description](#)



Nor-Lake Kold Locker KODB814-C 8' x 14' Outdoor Walk-In Cooler w/ Floor | Top Mount

The **Nor-Lake Kold Locker KODB814-C Outdoor Walk-In Cooler** is the ideal outdoor cooler for any business that needs to keep a wide assortment of food products cool and fresh. This unit measures 6 feet 7 inches tall, 8 feet wide, and 14 feet long so it is a great fit for those looking for a large outdoor walk-in cooler with plenty of space. Additionally, this unit's ceiling and walls are finished with 26 gauge corrosion resistant stucco embossed coated steel as well as 4" thick panels foamed-in-place with EPA-compliant polyurethane insulation. This unit easily maintains a temperature of 35°F.

Features & Benefits

- 578 Cu. Ft. of available space
- High output low profile LED light positioned above the door to prevent interference with shelving or product
- 26 gauge corrosion resistant stucco embossed coated steel on all surfaces except interior floor
- Smooth aluminum interior floor
- Deadbolt locking handle with independent key/padlock feature and inside safety release
- 26" wide, self-closing door
- Heavy duty adjustable cam-lift hinges
- Digital thermometer and light switch

Specifications

- Manufacturer: Nor-Lake
- Model: KOD814
- Compressor Location: Ceiling
- Dimensions: 6' (height) x 8' (width) x 14' (length)
- Condition: New

Warranty Information

- 15 year panel warranty
- 18 months parts and labor
- 5 year compressor warranty (optional)

Important Prop 65 Information for California Residents

Product Literature

-  [Nor-Lake KODB814-C Specification](#)
-  [Nor-Lake KODB814-C Owners Manual](#)
-  [Nor-Lake KODB814-C Installation Manual](#)
-  [Nor-Lake KODB814-C Capsule Pak Specification](#)
-  [Nor-Lake KODB814-C Flyer](#)
-  [Nor-Lake KODB814-C Brochure](#)
-  [Nor-Lake KODB814-C Warranty Sheet](#)





See more from Nor-Lake
Write a review about this product ►

Display Options

Featured Reviews



LET'S CONNECT

[Our Company](#)

[About Us](#)

[Sell Your Equipment](#)

[Contact Us](#)

[Careers](#)

[Customer Service](#)

[Payment Methods](#)

[Equipment Leasing](#)

[Extended Warranty](#)

[Shipping Policies](#)

[Returns And Exchanges](#)

[Privacy Policy](#)

[Resources](#)

[GSA Information](#)

[Burkett Blog](#)

[Buyer's Guides](#)

[Frequently Asked Questions](#)

[Used Equipment Guarantee And Warranty](#)



2531 Ratings ★★★★★

4.7 ★★★★★

Google

Customer Reviews





Welcome to our new Hotel Restaurant Supply e-commerce platform!



[Support](#)

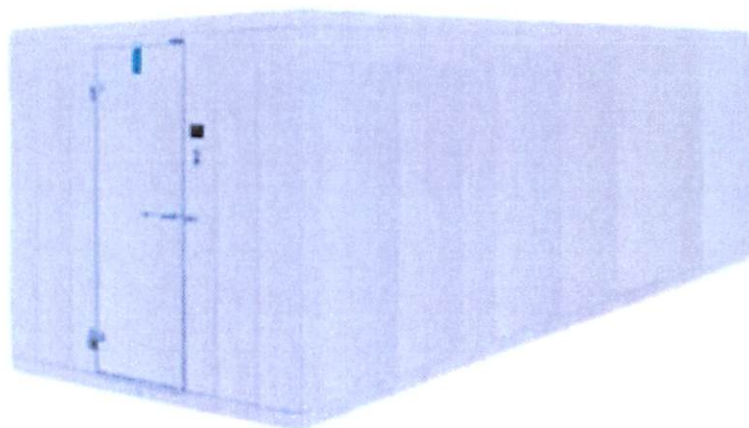
0

Search entire store here...



Instant Savings & Benefits! **[Join the](#) HRS CLUB**

[Home](#) > Norlake 11X13X8-7 Fast-Trak™ Indoor Walk-In, 11' x 13' x 8'-7" H, smooth aluminum interior



Join the HRS Club



Norlake 11X13X8-7 Fast-Trak™ Indoor Walk-In, 11' x 13' x 8'-7" H, smooth aluminum interior

SKU#: NLK-11X13X8-7

\$19,448.00 /Each

 Free Shipping

In Stock 

Qty

-

1

+

Add to Cart

Apply For Financing

-  [ASK A QUESTION](#)
-  [ADD TO WISH LIST](#)
-  [ADD TO COMPARE](#)

Specification

Manufacturer	Norlake
Model #	NLK-11X13X8-7
Shipping Weight	2240 pounds

Join the HRS Club

Details

Fast-trak Indoor Walk-in 11' X 13' X 8'-7" H Smooth Aluminum Interior Floor 26 Gauge Embossed Coated Steel Interior & Exterior Finish Self-closing Door Locking Deadbolt Handle

- ✓ Nominal Short Side=11'
- ✓ Nominal Long Side=13'
- ✓ Floor=With Floor
- ✓ Installation=Indoor
- ✓ Nominal Height=8'-7"

Resources and Downloads



[View Specification Sheet](#)

A PDF viewer is required to view this product's information.

[Download Adobe Acrobat software](#)

**REQUEST
A QUOTE**

**Talk to a
Product Expert**

- New Design Builds
- Bulk Orders
- Custom Products

Join the HRS Club

A smiling woman wearing a white chef's hat and a white chef's coat, pointing her right index finger upwards towards the 'REQUEST A QUOTE' button.



Join the **HRS Club**

Receive members-only pricing and exclusive offers.



Enter your email address

Subscribe

Contact



Resources



Customer Service



Let's Connect



Copyright © 2022-present Hotel Supply Warehouse, Inc. All rights reserved.

Join the HRS Club



3



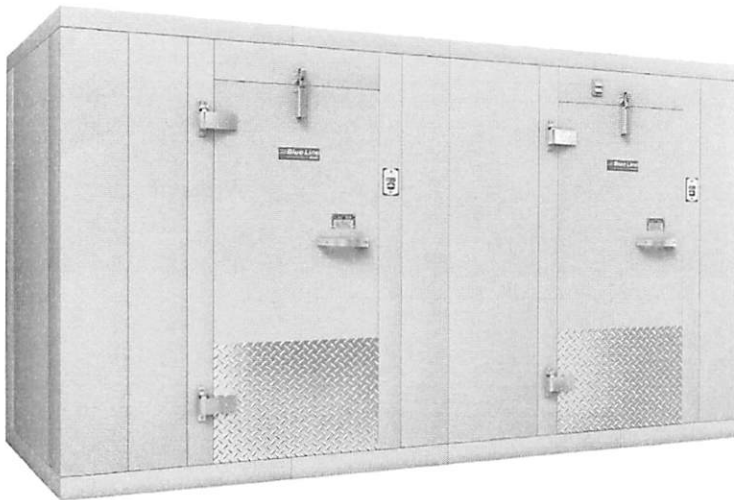
877.599.7569

Hours: M - F 8 to 8 ET | Sat 8:30 to 5

Arctic BL146 COMBO-C-R Indoor Walk In Refrigerator/Freezer Combination w/ Remote Compressor - 13' 8" x 6'

[Write a Review!](#) KaTom #: 426-BL146COMBOCR • MPN: BL146COMBO-C-R

•



Free Shipping Item

Retail Price: ~~\$54,261.50~~

\$23,197.00/ Each

1

[Add to Cart](#)

Ship times may vary due to supply chain constraints. Please contact our Sales Team if you need this item in a specified time frame.

• Overview

Arctic BL146 COMBO-C-R Description

From The Manufacturer

Walk-in Combination Cooler/Freezer, indoor, 13' 8" x 6' 0" x 7' 8-1/2"H, cooler: without floor (+35° F holding), freezer: with floor (-10° F holding), urethane foam insulated cam-lock panels with 26GA embossed metal finish, key lock handles, digital thermometers with light switch, inside safety release mechanisms, 34" x 78" doors with 24" high interior & exterior kickplates, remote refrigeration, R448/449, interior dimensions: 7' 3-1/2" x 5' 4" (cooler), 5' 4-1/2" x 5' 4" (freezer), ETLus, ETL-Sanitation, EISA

*Image may not depict product color, inclusions or accessories.

Resources

- [Walk-in Condenser Location: Ceiling or Wall?](#)
- [Walk-in Cooler Floors: Choosing a Good Foundation](#)
- [Walk-in Location Requirements](#)



Arctic BL146 COMBO-C-R Specifications

Spec Attribute	Spec Value
Manufacturer	Arctic
Base	Combination
Compressor Location	Remote
Hertz	60
Special Features	Refrigerator/Freezer Combo
Type	Indoor
Voltage	208/230
Series	Blue Line

Spec Attribute	Spec Value
Height (ft)	7.71
Width (ft)	13.67
Length (ft)	6
Phase	1
Product	Walk-In Refrigerators/Freezers
Product Type	Commercial Refrigeration
Weight	2225.00

Documents



Spec Sheet

Certifications

