

Project Description

Purpose

The **Joe's Creek Greenway Restoration Project** (Figure 1) will **improve floodplain capacity and water quality** while offering recreational opportunities, supporting multimodal transportation, and creating improved resilience to flooding impacts for low- to moderate- income residents of Pinellas County. **This project crosses underserved or marginalized communities in the Town of Kenneth City and the Lealman Community Redevelopment Area (LCRA)**, and involves the:

1. **Restoration of the Joe's Creek Greenway** including channel widening for improved water flow capacity and water quality, enhanced riparian habitat, and safe and sustainable multimodal trail as programmed by Forward Pinellas, the metropolitan planning organization for Pinellas County.
2. **Implementation of a natural system flood mitigation and associated in-watershed improvements** as identified in the Joe's Creek Watershed Management Plan (WMP) which will lower the base flood elevation (BFE) within the 100-year floodplain, reducing flood risk.



Figure 1 - Joe's Creek Greenway Restoration Project. This rendering is the vision for the trail crossing at 66th Ave North.

Project Overview

This project is located in central Pinellas County within the Lealman Community Redevelopment Area (LCRA) and Kenneth City, along Joe's Creek (Figure 2). Joe's Creek is a 9.8-mile-long creek, approximately 23 feet wide by 16 feet deep, which the County maintains for stormwater conveyance capacity and flood risk reduction. The creek's intersection with Cross Bayou is tidally influenced and ultimately flows to Boca Ciega Bay and the Gulf of Mexico via Johns Pass. The Joe's Creek Watershed is 9,256-acres, and includes the City of Pinellas Park, City of St. Petersburg, Town of Kenneth City, and parts of unincorporated Pinellas County, including the LCRA.

Dominant land use categories in Joe's Creek Watershed include residential, commercial, industrial, and recreational open space. The Joe's Creek Watershed Management Plan (WMP) was completed in April 2017, and during its development in September 2016, the area received record rainfall of 22.4 inches in 72 hours. This record rainfall combined with storm surge from Hurricane Hermine intensified flooding resulting in major bank failures and erosion along Joe's Creek. **Improving the Joe's Creek channel is paramount to realizing the benefits outlined in the WMP, including flood protection, erosion control, and water quality improvements which will reduce flood risks and improve resilience** for the surrounding communities.

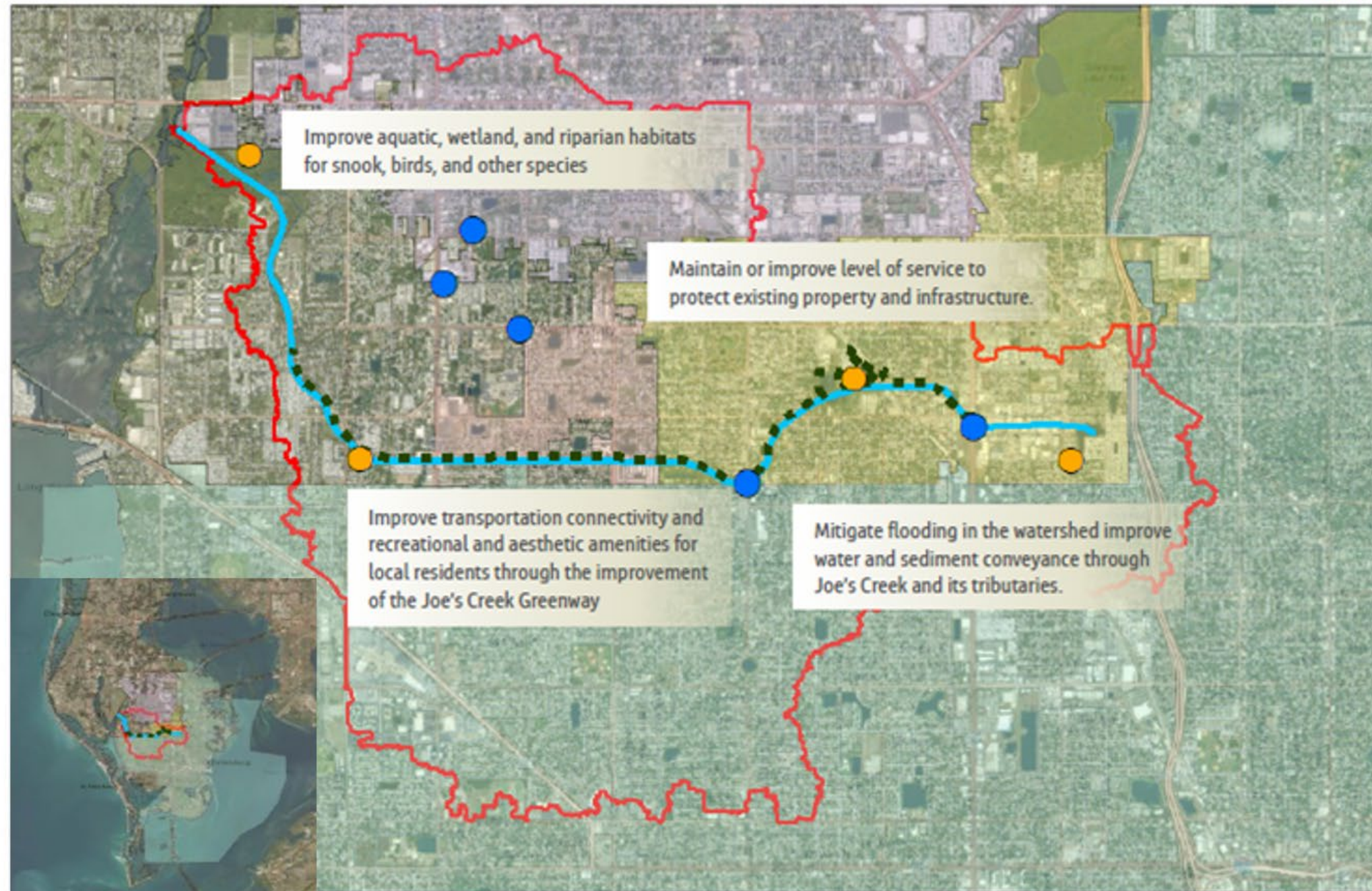
Multimodal Trail Siting and Support

Independently, Forward Pinellas has explored the necessity of adding a multimodal trail through the Greenway. This was inspired by the LCRA Findings of Necessity and is explored in greater depth in the Community Values section. **The trail has undergone a siting study, complete with stakeholder and community input.** A series of meetings and site visits were conducted with Forward Pinellas, Pinellas County Planning, Pinellas County Parks and Conservation Resources, Pinellas County Utilities, Florida Department of Transportation, and the community which demonstrated **strong interagency interest and public support.** Development of the trail route **included 11 public meetings with many enthusiastic advocates** of the proposed trail. This contributing input has been invaluable to the study.

Following the public outreach activities, a multimodal trail route analysis was performed, revealing that **the most appropriate route for the multimodal trail would be along Joe's Creek**, as this **land is already owned by Pinellas County** and provided an **experience comparable to a greenway.** At the same time, coordination with the County Public Works Department was initiated, which determined that the county-owned land provided **adequate space for the bank stabilization improvements, the multimodal trail, and for routine maintenance activities.** Figure 2 shows the proposed alignment of the trail.

Joe's Creek Phase I Overarching Goals

1033_PJC_4



Legend

- Joes Creek Greenway Trail
- Joes Creek Main Channel
- Basin Boundary
- Flood Mitigation Projects
- Water Quality Improvements



Figure 2: Joe's Creek Greenway Restoration Project Map and Goals. Dots show flood mitigation (blue) and water quality improvement (gold) project locations, as well as the stream channel (bright blue) and the trail (dotted black).

Flood Mitigation Impacts

Stabilizing and widening Joe's Creek increases the conveyance system capacity through returning it to its natural state, allowing Pinellas County to **implement additional upstream stormwater best management practices to lower flood risk and increase resilience throughout the watershed**, aligning with other watershed management plan work that will be completed concurrently.

Figure 3 shows Joe's Creek Watershed, denoting the portions within the A and AE Federal Emergency Management Agency (FEMA) special hazard flood areas. In this figure, the main channel of Joe's Creek can be seen as the green line roughly bisecting the watershed, with the Lealman Industrial Park in Flood Zone AE, depicted to the west, and the point of discharge into Cross Bayou to the northwest. **Lowering the 100-year floodplain BFE within the Lealman Industrial Park will create economic opportunities** for the community and make it more resilient for future development.

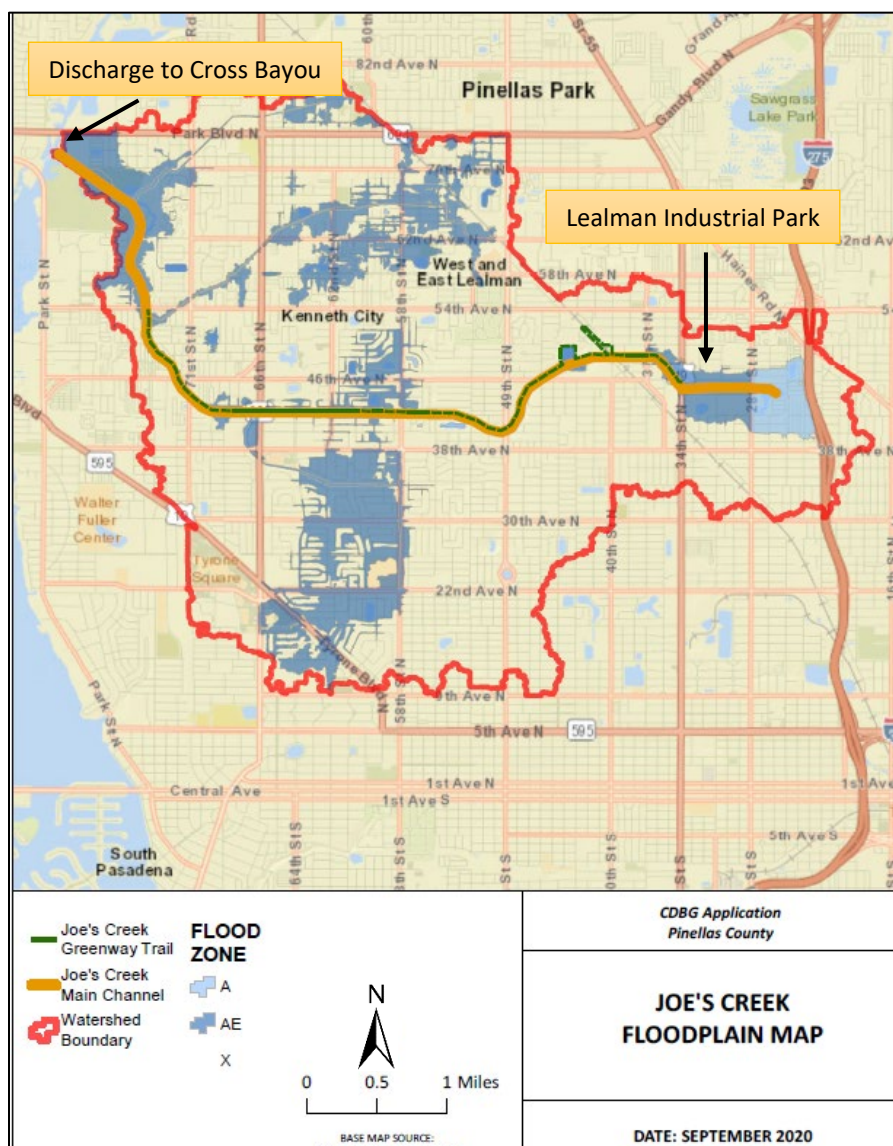


Figure 3. Joe's Creek Floodplain. Lealman Industrial Park and the discharge of Joe's Creek to Cross Bayou are shown

With the Joe's Creek Restoration implemented, Pinellas County can complete the recommendations outlined in the WMP, which include **regional stormwater improvements to provide watershed-wide flood protection**,

erosion control, and enhanced water quality all of which will work together to **minimize flood and health risks, improve resilience, and catalyze redevelopment** in the LCRA and other low- to moderate-income areas of the watershed. Figure 4 depicts challenges that require addressing within the watershed. Figures 5 and 6 depict the locations and projects recommended by the WMP, divided by flood mitigation and water quality focus, respectively. **These efforts are highly interdependent and provide comprehensive solutions** that benefit the local low- to moderate-income residents through a holistic approach. Specific project items, in addition to the main channel restoration of Joe's Creek include:

- Addition of the Lealman regional stormwater facility (in progress)
- Culvert restoration and upgrades throughout Joe's Creek and the watershed
- Channel improvements in the form of stream restoration that rely on nature-based solutions
- Erosion control measures
- Addition of dry retention
- Improvements to main channel tributary systems
- Local improvements to stormwater management facilities and roadways in Lealman and Kenneth City utilizing green infrastructure
- Complete streets designs, where appropriate.

Of these items identified in the WMP, **nature-based solutions and project partnerships have already been identified and included in the local mitigation strategy**. This watershed includes repetitive loss properties that Pinellas County is seeking to protect. The **Joe's Creek Greenway Restoration Project dovetails with the County's resilience initiatives and regional flood mitigation improvements including the addition of a multimodal trail** along the creek, further benefiting the connectivity and mobility of the residents in these areas.

Figure 4. JOE'S CREEK CHALLENGES



Figure 5. WATER QUALITY SOLUTIONS

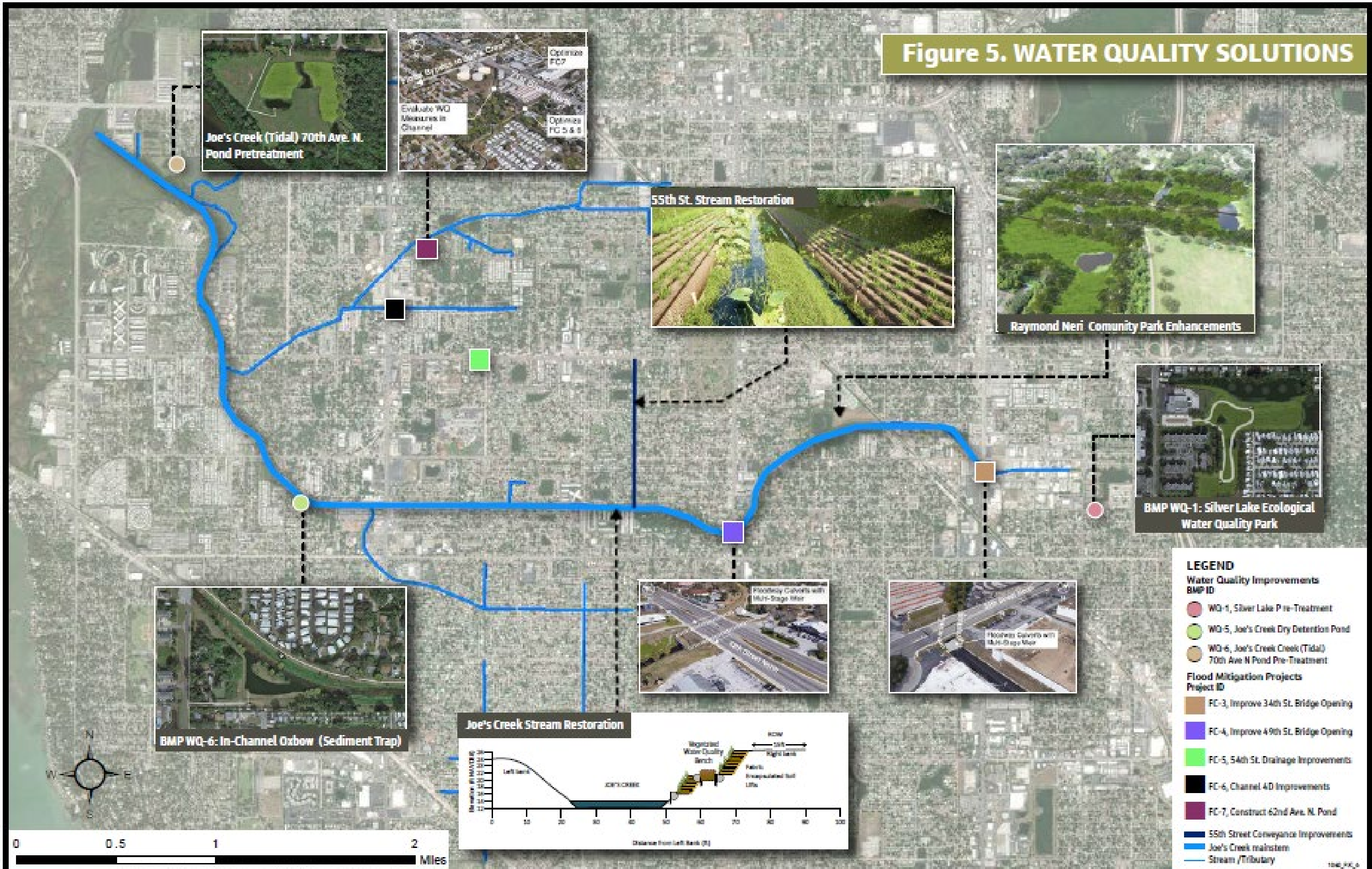
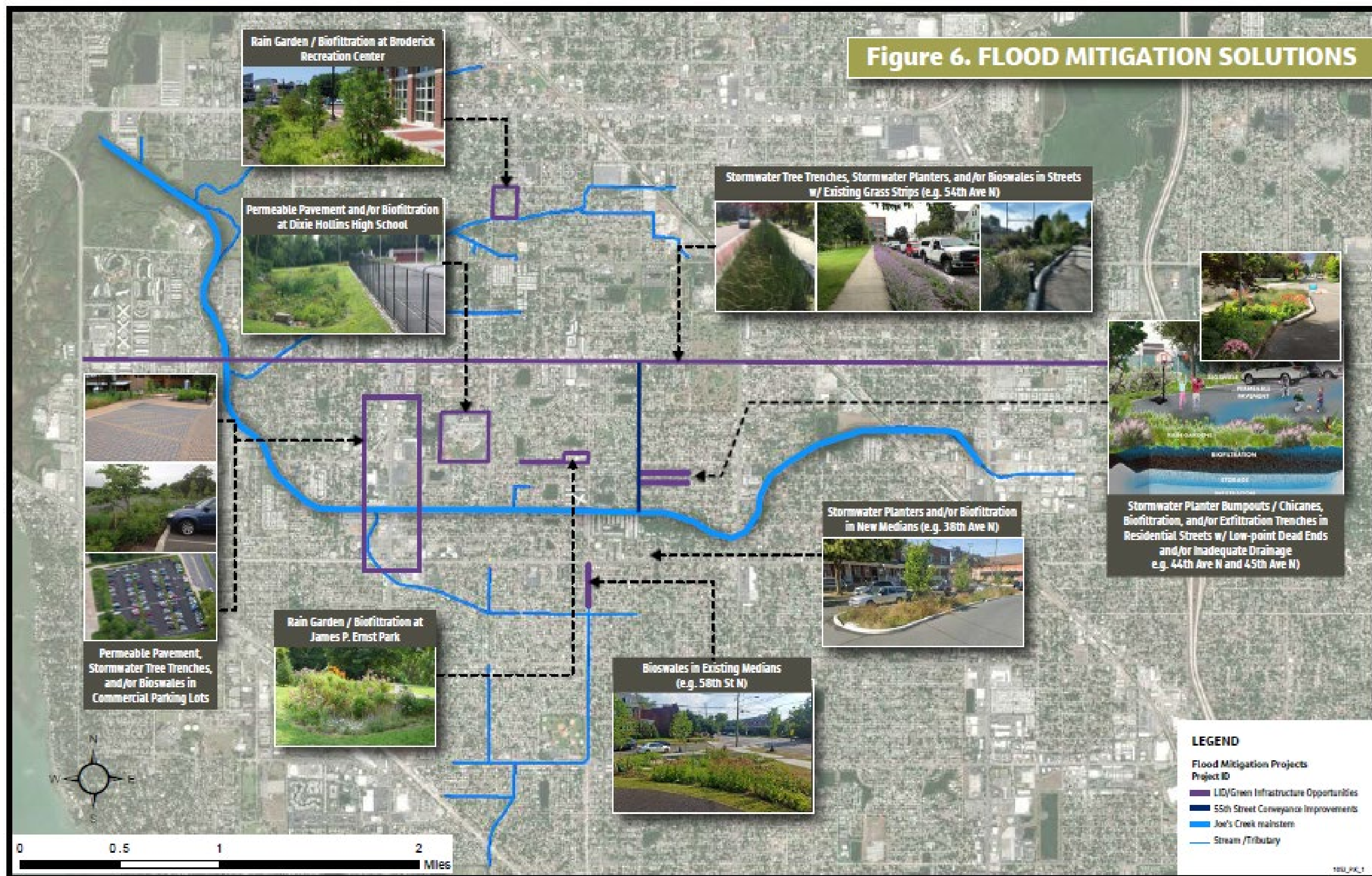


Figure 6. FLOOD MITIGATION SOLUTIONS



Watershed Benefits

In implementing this project, the Joe's Creek watershed will benefit from:

- lower 100-year floodplain elevations
- increased native habitat
- improved stormwater storage through added facilities
- improved stormwater conveyance
- improved resilience for future conditions including storm surge and sea level rise

Commercial and residential property owners throughout the watershed will see a **higher stormwater level of service** by increasing storage and flow capacity, ultimately reducing flooding to roadways and other features. By decreasing the floodplain elevation and updating FEMA mapping, **residential and commercial property owners will benefit from reduced flood insurance premiums.**

Increased Resilience Through Risk Mitigation

The **Joe's Creek Greenway Restoration Project** will modernize existing stormwater infrastructure and conveyance to provide flood mitigation. Substantial portions of Joe's Creek Watershed were developed from the 1940s through the 1970s, prior to the passing of the Clean Water Act and State stormwater regulations and did not incorporate attenuation or treatment systems. The soils, vegetation, and geometry of the canal, along with the largely urban, impervious, watershed, make the banks of Joe's Creek susceptible to failure because of high-water flows in the creek. **Stabilizing the banks of the creek mitigate the risk of flash flooding resulting from bank failures.**

This restoration will bring Joe's Creek **closer to its original natural state, which will result in increased habitat, better discharge water quality, and flood mitigation.** With the implementation of this project, subsequent opportunities become available to employ more nature-based infrastructure projects for treatment and attenuation, some on County owned lands. With the **use of native plants** and living shoreline-type designs, habitat and water quality within Joe's Creek will improve and the watershed will become **more resilient. The roots of native forested streambanks add resilience** as they naturally strengthen bank soils and provide more resistance than mowed man-made channels, which cannot effectively protect channels from erosion. Employing native plantings creates desirable habitat and eliminates the need to mow, resulting in a more natural and beautiful channel and decreased maintenance.

Pinellas County is a **peninsular land mass and is especially vulnerable to sea level rise impacts.** The ability of Joe's Creek to provide flood mitigation will diminish as sea level rise predictions are realized if the adaptive capacity of the system is not addressed beforehand. **Utilizing nature-based solutions versus traditional hardening methods increases the system's ability to adapt to changing conditions.** The impacts of sea level rise on storm surge in the project area are shown on Figure 7.

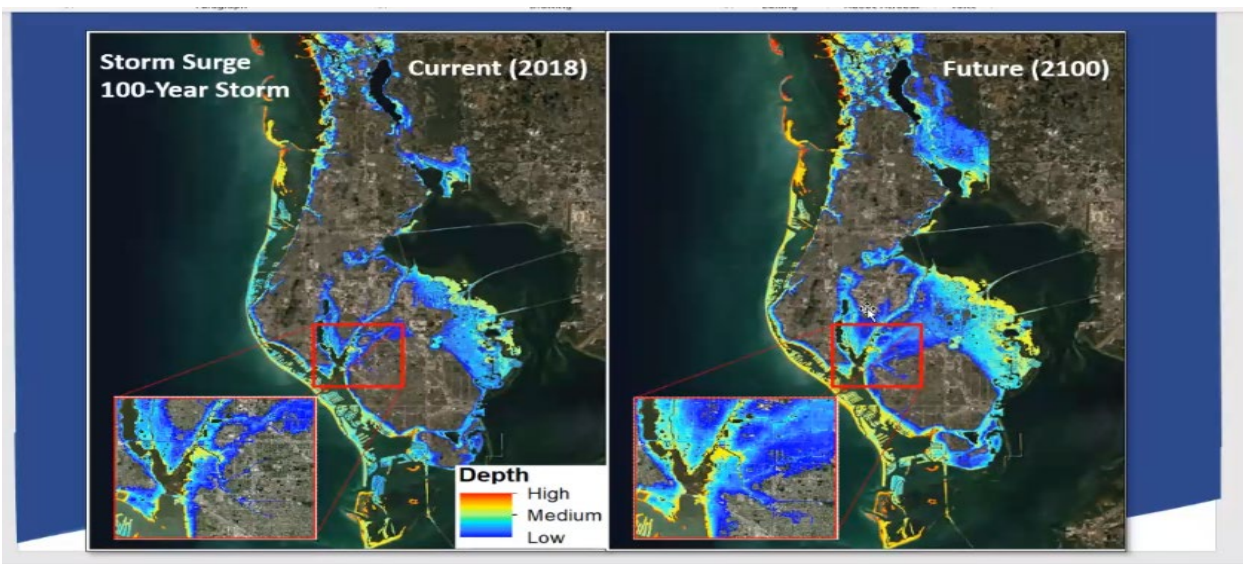


Figure 7: Storm Surges at Joes Creek and Cross Bayou will increase and continue to disproportionately impact communities in the LCRA.

Significant portions of the stormwater infrastructure will be updated with this project, along with the addition of facilities, mitigating **flood risks associated with the highly urbanized environment**. Specifically, this project is targeted to mitigate the following conditions:

- Tropical Weather Impacts/Hurricanes
- Coastal, Flash, and Inland Flooding
- Severe Storms
- Sea Level Rise

The project implements the following measures to mitigate these risks:

- **Drainage improvements to mitigate flooding potential throughout the watershed.** The effect of this is lowering of the floodplain for much of the watershed, which would inherently rise if left unmitigated, through increasing the capacity in the main channel of Joe's Creek
- **Reduction in flood elevation and duration** decreases the potential for surface water to affect wastewater, transportation, other infrastructure networks.
- **Water quality improvements** brought forth by enhancing the conveyances and stormwater facilities within the watershed and along the main channel to provide new opportunities to mitigate water quality risks.
- Conveyance improvements will meet or improve level of service currently provided and **maintain that level of service independent of sea level rise and adverse weather conditions.**
- Creates the environment to **implement further mitigation strategies to address sea level rise and storm surge** within and adjacent to the main channel of Joe's Creek that would not be possible without these improvements.
- **Creates the opportunity to reduce the footprint of the floodplain** and potentially remove flood-prone structures from the floodplain. This results in a potential annual savings for a low-moderate income household of approximately \$3,000-\$5,000 on flood insurance when structures are removed from the 100-year floodplain.

Project Team

The project team is comprised of members of Pinellas County Public Works, supported by the County's Grants Center of Excellence and Office of Management and Budget. The project team is described in detail in the Capacity Plan section.

Project Funding Methodology

The requested funding is based on conceptual design estimates, engineers' opinions of probable cost, previous experience, and current similar project construction costs. Elements included in the costs are public outreach, preliminary engineering, environmental services, design, permitting, procurement, construction, construction inspection, and post design services. Cost estimates for tasks have been escalated to the midpoint of construction, 2028.

Pinellas County will pay for modeling and design services through current Capital Improvement Program (CIP) programming, funded by the Penny for Pinellas tax and by an existing Southwest Florida Water Management District (SWFWMD) cooperative funding agreement (expected October 2021). This project aligns with the strategic objectives of the SWFWMD, and cooperative funding will be pursued throughout the project lifecycle. Because this project is critical to providing resilience to our community and supporting underserved and marginalized communities, subsequent to this application, the County will continue to explore grant opportunities and seek other funding partners. Project outcomes will conform to the SWFWMD Cooperative Funding Benefit Cost requirements for cost effectiveness.

Proposed Project Components & Outcomes

The **Joe's Creek Greenway Restoration Project** will reshape and improve the entire greenway returning it to a natural state. The resulting greenway will create new recreational opportunities and a new multimodal transportation corridor, alongside a natural stream corridor complete with meandering channels, forested floodplains, and forested and non-forested in-line wetlands and ponds. Where the system cannot rely on nature alone, green technologies will be used to boost the effect of native plants. Figure 8 shows Joe's Creek as it is today, and a rendering of the vision Pinellas County has for Joe's Creek's future.



Figure 8. (Top) Joe's Creek, current state. (Bottom) Rendering of Joe's Creek after greenway restoration.

Maintenance of Joe's Creek Restored Greenway

This project is similar in size and scope to other projects the Pinellas County Public Works Stormwater and Vegetation Division currently maintains. Ongoing maintenance for this project will be programmed into future budget cycles. A member of the maintenance team is included in the Capacity Plan. The choice of a natural design significantly reduces costs of maintenance of the completed project versus the requirements for the creek as it is today.

Another improvement to the Joe's Creek channel will be **reduced erosion and deposition, creating a better flowing stream requiring lower maintenance**. Figure 9 shows an example of the erosion experienced during large rain events in Joe's Creek after Hurricane Hermine in 2016, and Figure 10 shows a current representation of stream power (erosion potential) along the channel length.



Figure 9: Embankment Erosion in Joe's Creek After Hurricane Hermine. Erosion and deposition fill the channel, impeding flow, and requiring maintenance to restore the channel to its original shape.

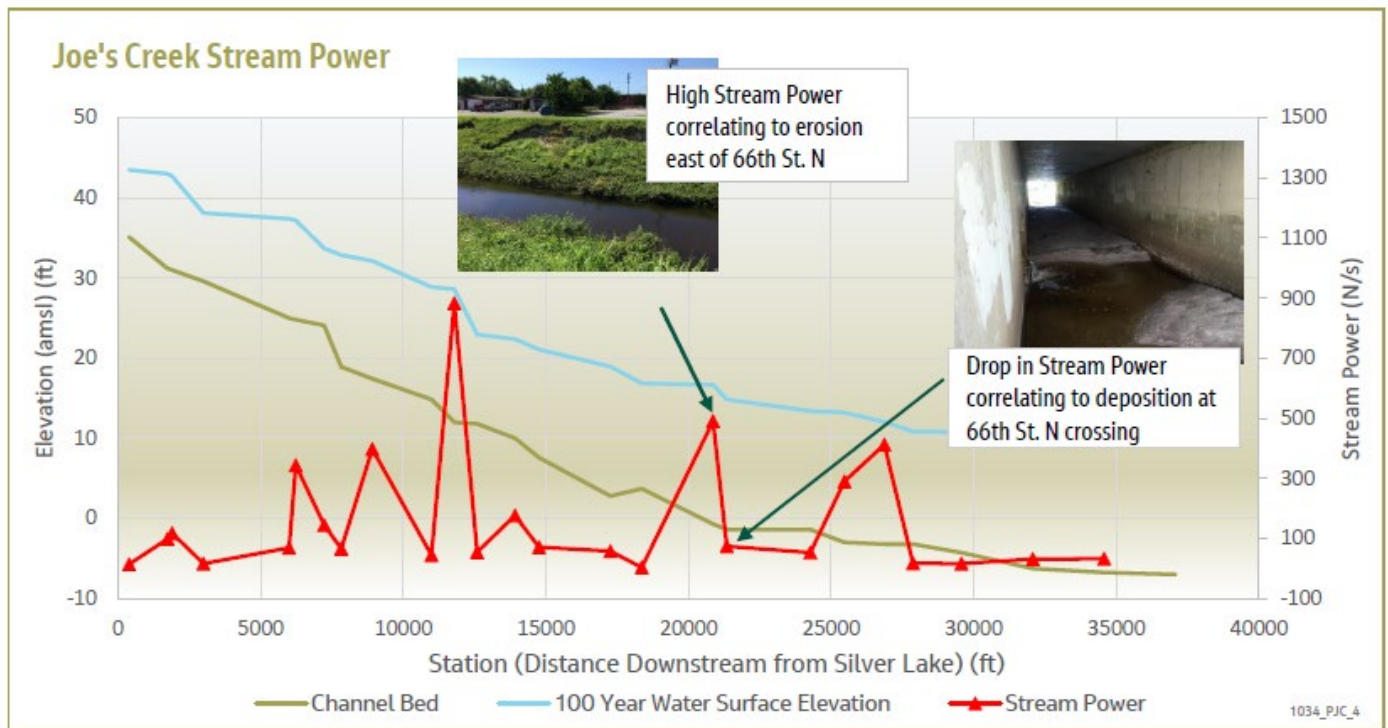


Figure 10: Joe's Creek Stream Power. Erosion and deposition both reduce the effectiveness of the channel and increase maintenance costs. Designing for decreased maintenance is a critical success factor of this project.

Project Summary

Pinellas County envisions a Joe's Creek corridor that has the potential to change the character of the surrounding areas by offering recreational opportunities, supporting multimodal transportation, and laying the groundwork for a safe and resilient community. The **Joe's Creek Greenway Restoration Project** accomplishes these goals, while simultaneously restoring the natural qualities of Joe's Creek providing **improved resilience to flood impacts, stormwater management benefits, and water quality improvements**. These watershed management improvements will **reduce risk of flooding for today and in the future by providing resilience** against sea level rise.

The **Joe's Creek Greenway Restoration Project** results in a linear park which provides a safe, inexpensive option for regular recreation and exercise for people living in the surrounding communities. The trail will **help the adjacent communities build pride by providing open spaces and safe access to first-class recreational amenities** and will **ensure that children can safely walk or bike to school, or to a neighbor's home**. In restoring the greenway to a state that more mimics the natural creek, an urban oasis is created, and **local residents will have access to a greenway and natural habitat that does not exist today**.

LMI= 52.35%

Community Value

The **Joe's Creek Greenway Restoration Project** (Figure 1) will **improve floodplain capacity and water quality** while offering recreational opportunities, supporting multimodal transportation, and creating improved resilience to flooding impacts for low- to moderate- income residents of Pinellas County. **This project crosses underserved or marginalized communities in the Town of Kenneth City and the Lealman Community Redevelopment Area (LCRA),** and involves the:

1. **Restoration of the Joe's Creek Greenway** including channel widening for improved water flow capacity and water quality, enhanced riparian habitat, and safe and sustainable multimodal trail as programmed by Forward Pinellas, the metropolitan planning organization for Pinellas County.
2. **Implementation of a natural system flood mitigation and associated in-watershed improvements** as identified in the Joe's Creek Watershed Management Plan (WMP) which will lower the base flood elevation (BFE) within the 100-year floodplain, reducing flood risk.

The creek bank and associated improvements, such as the enhanced regional stormwater facilities, **provide flood mitigation and resilience for the entire watershed with the largest flood risk reduction occurring within the adjacent low and middle income (LMI) neighborhoods.** This improves the downstream channel capacity will allow for additional flood mitigation projects upstream without compromising the level of service (LOS).

— Raymond Neri Perspective —



Figure 1. Tying the Raymond Neri Park into the Vision. Using the ponds at the existing Raymond Neri Park can extend the natural place-making attributes of this project, while providing enhanced water quality.

The **Joe's Creek Greenway Restoration Project** crosses through LMI communities including the Town of Kenneth City and the adjacent LCRA (Figure 2), which was the first redevelopment area established in unincorporated Pinellas County. The LCRA is a collaborative community effort supported by data and analysis, formed to combat blight in accordance with the Community Redevelopment Act of 1969. Included in the definition of "blighted area" (Section 163.340(8) FS) is the "Predominance of defective or inadequate....public transportation facilities," in addition to "assessed values of real property in the area...have failed to show any appreciable increase over the 5 years prior." The **Joe's Creek Greenway Restoration Project** directly addresses both objectives by providing a new neighborhood amenity and by enhancing the multimodal connectivity between the LCRA, the rest of the project area, and public transportation in a safe and equitable manner.

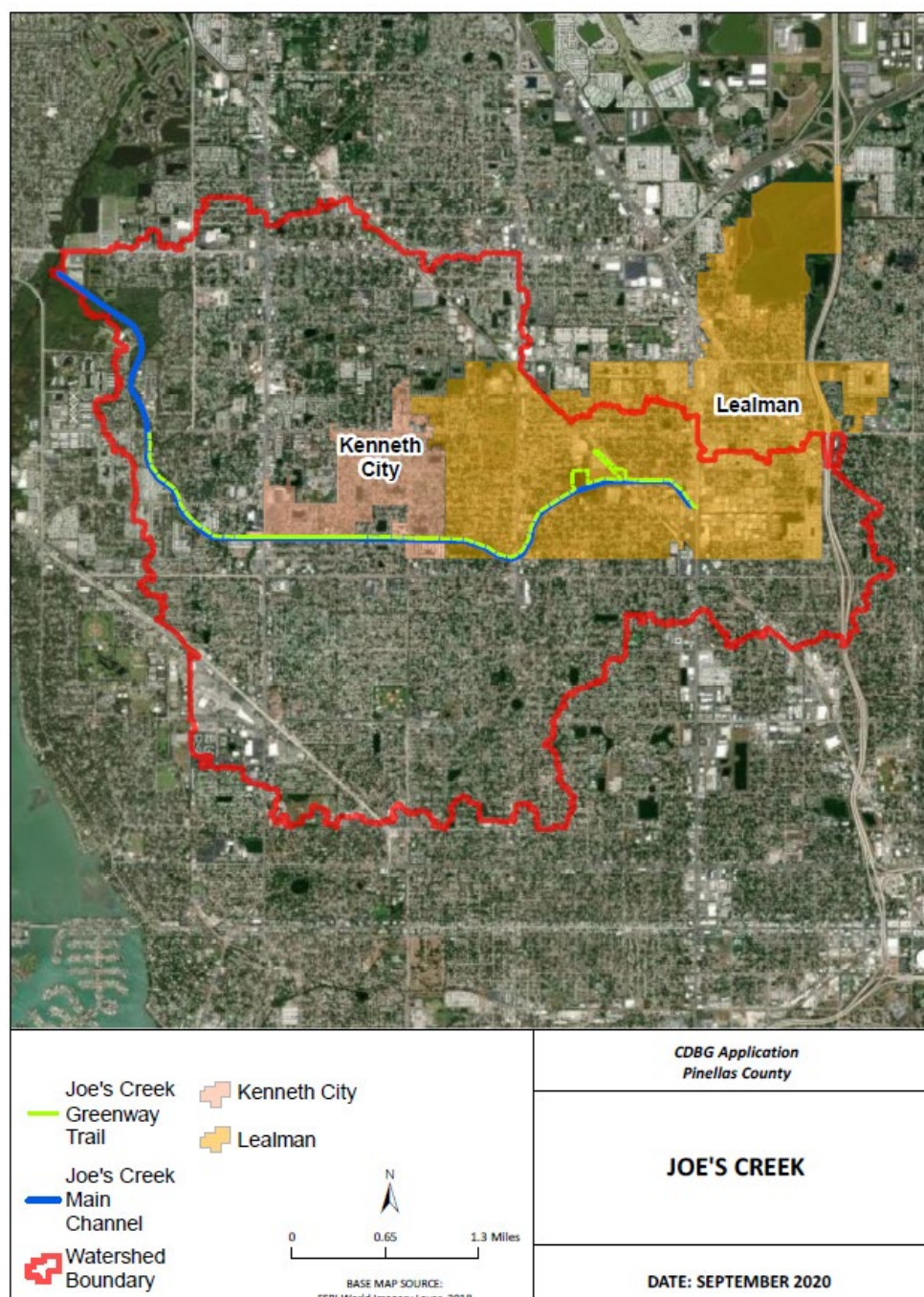
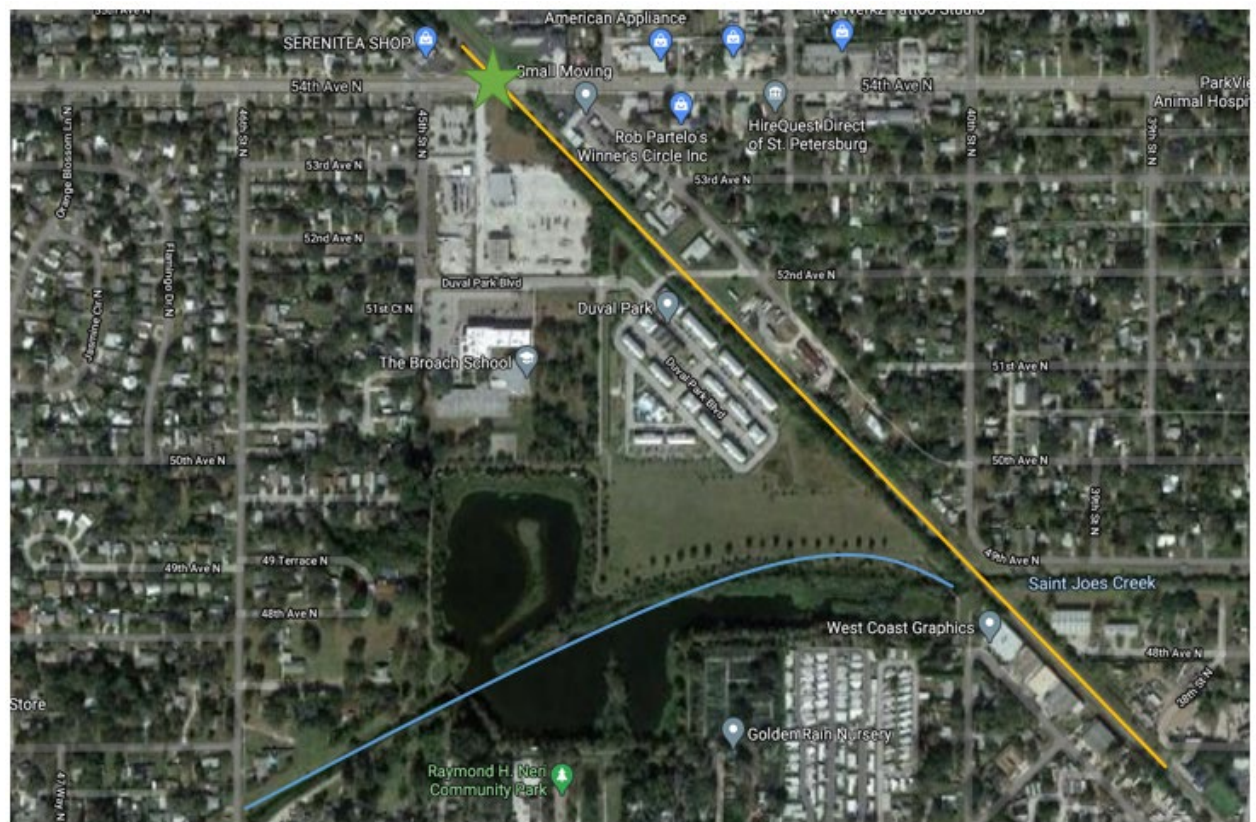


Figure 2. Kenneth City and LCRA Delineation Map

In 2014, when the LCRA was formed, it was determined that **approximately 23% of the households in the LCRA had incomes below \$15,000**, compared to 13.9% for the rest of Pinellas County. Additionally, it was found that major challenges facing the LCRA were **safety concerns (lack of sidewalks and safe pedestrian passageways) and undesirable community appearance**¹. The **Joe's Creek Greenway Restoration Project** addresses both concerns. Specifically, street patterns in Central Lealman are impeded by the creek itself, running east-west, and the CSX Railroad, which runs diagonally through the project area from the southeast to the northwest (**Figure 3**). Only one major arterial roadway crosses this area (54th Avenue North), but lacks bike lanes and a pedestrian crossing. All other east-west roads are blocked by Joe's Creek or the railroad, and the general lack of sidewalks in the area, **provide obstacles for youth and other transportation-disadvantaged residents from accessing public transportation or other community services**.

¹ <https://www.pinellascounty.org/cra/pdf/Lealman-Study-Area-Finding-of-Necessity.pdf>



— CSX ★ CSX Road crossing (no pedestrian crossing) — Joe's Creek

Figure 3. Representative Area Showing How Creek and Railroad Impact Pedestrian Flow. The rail and creek function as natural barriers, impeding flow. The crossing at 55th Street does not have a pedestrian crossing.

The project addresses the need for a safe vital linkage to public transportation for the community and works to lower the base flood elevation (BFE) within the 100-year floodplain for an area already targeted for community redevelopment. The Joe's Creek Greenway Restoration Project is a vitally important linkage that will bring both increased access to transportation alternatives and improved recreational opportunities to Kenneth City and the LCRA, as well as improved flood mitigation through the implementation of upstream stormwater management and conveyance improvement projects. Forward Pinellas examined the Joe's Creek Greenway and the areas surrounding it in 2017, identifying that:

- **Pinellas County already owns and controls the entire project area**, varying in width from 140 feet to 170 feet, enough land area around Joe's Creek to implement the improvements.
- Much of the project area (Figure 4) was noted in the Pinellas County Metropolitan Planning Commission's 2010 Demographic Analysis Report as minority, low-income, or both. This restoration will **serve a significant proportion of low-income and minority residents**.
- **This project area includes a higher percentage of households without access to a motorized vehicle compared to the County average** (2015 ACS 5-Year Estimate and Florida Geographic Library; AECOM, 2017).
- The majority of this project area has a **higher than County average of commuters who walk, bike, or take transit to work** (2015 ACS 5-Year Estimate and Florida Geographic Library; AECOM, 2017).

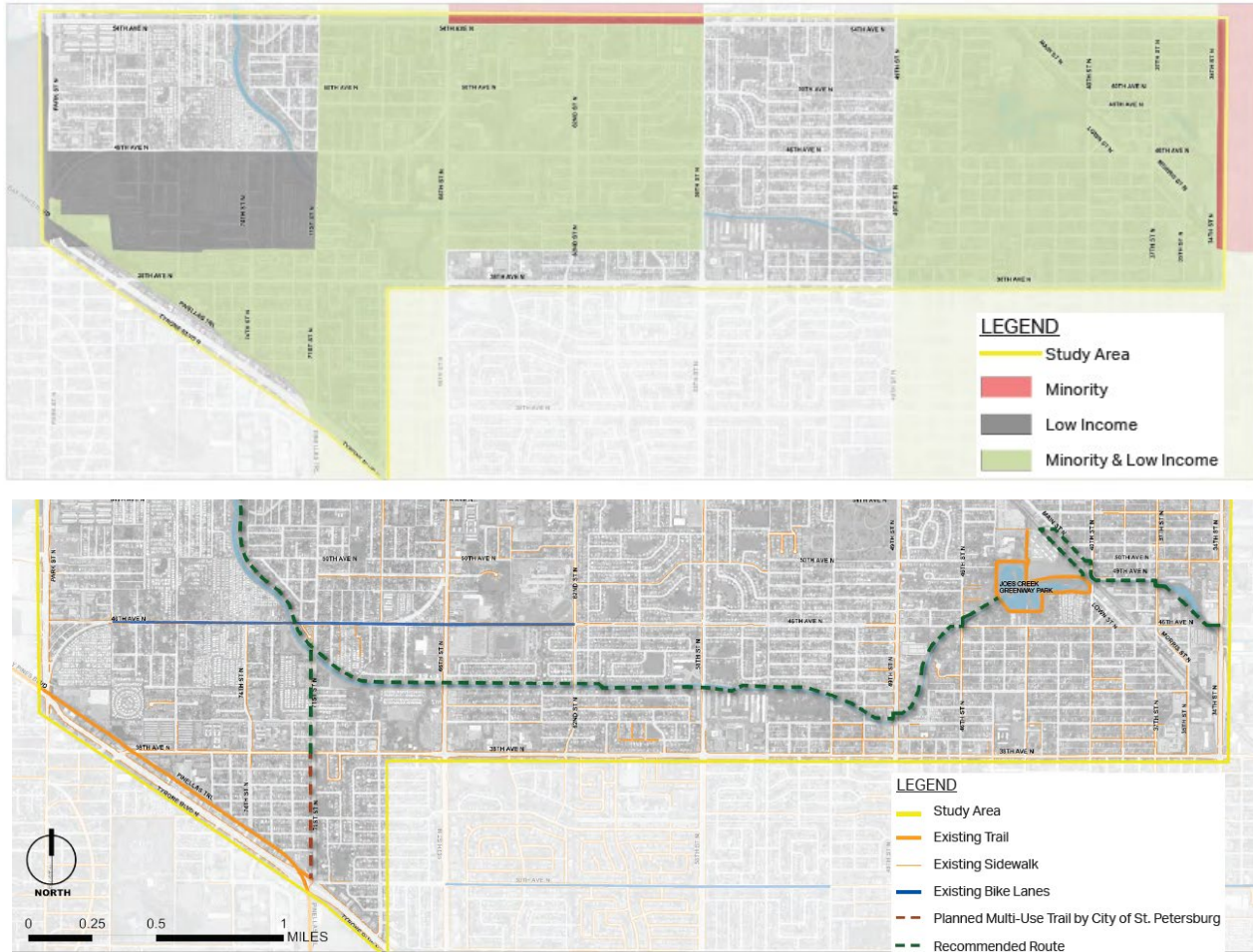




Figure 5. Joe's Creek Industrial Area (red pin) is Located in a FEMA A Flood Zone, as delineated by the turquoise shading. FEMA FIRM effective 8/24/2021.

Radically improving this underserved or marginalized community via the **Joe's Creek Greenway Restoration Project** and associated flood mitigation activities will **directly address the concerns identified by the LCRA Finding of Necessity by providing a safe vital linkage to public transportation and the community, crossing over the CSX Railroad, and through lowering the 100-year (BFE) within the mapped floodplain, which will uplift the community by reducing the development hurdles and increasing the potential for future development and investment.**

The **restoration of the creek to a more natural state** will moderate flow rates and naturally reduce scour and erosion on the streambank, while improving water quality by filtering out suspended solids and removing nitrogen and other nutrients in the process. Since Joe's Creek flows to a tributary of Tampa Bay, and an Outstanding Florida Water, reducing nitrogen is an important water quality objective, which speaks **directly to improving water quality and the health of the regionally economically important Gulf of Mexico and Tampa Bay Estuary.**

The restored greenway will provide citizens with **close-to-home recreational opportunities, educational experiences, and access to natural landscapes.** Figures 6a and 6b depict Joe's Creek as it is today, and as a rendering of the completed project vision, respectively. The trail will also help the surrounding communities build pride by ensuring that their **neighborhoods are vibrant places to live, which have safe access to first-class recreational amenities and regional transit connectivity and ensure that their children can safely walk or bike to school or a neighbor's home.**



Figure 6a. Joe's Creek, current state
























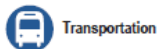
Figure 6b. Rendering of Joe's Creek upon project completion

Community Benefits and Lifelines

Table 1 summarizes local and regional benefits provided by this project and the Community Lifelines addressed.

Table 1. Local and Regional Benefits and Community Lifelines Benefitted

BENEFIT	LOCAL	REGIONAL	LIFELINES	COMMENTS
Restoration of Natural Environment	✓	✓	 	Restoration of Joe's Creek to a more natural state improves water quality, reduces erosion, reduces maintenance costs, and mitigates flooding.
Reduced Maintenance	✓	✓		This benefits all rate payers in Pinellas County through implementing a design that has low ongoing maintenance commitments.
Recreational Area	✓		 	Provides a new recreational area and amenity to traditionally under served neighborhoods.
Multimodal Transportation Corridor	✓	✓	  	Provides access to improved economic opportunities; provides safe non-motorized transport across railroad and to public transportation.
Mitigate Flooding	✓	✓	 	The LCRA Industrial Park is located within the FEMA 100-year floodplain.
Connect to Pinellas Trail	✓	✓	  	Provides connectivity from neighborhood to community amenities, services, and jobs.
Connect to Regional Transit	✓	✓	 	Currently there is no direct connection to the local regional transit systems. The multimodal trail will provide a way for non-motorized transport to safely connect to regional transit resources.
Connect to Schools, Afterschool Care	✓		 	Provides a safe corridor for multimodal non-vehicular movement within the local area.
Provide New Neighborhood Amenity	✓			Provides a first-class amenity to a community redevelopment area and a traditionally under served population increasing the sense of community and neighborhood desirability and elevate property values.
Reduce Nitrogen Loading to Tampa Bay & Gulf of Mexico		✓	  	Protects water quality to avoid algae blooms which adversely impact health and protects the recreational benefits of the Gulf and Tampa Bay estuary; significant economic drivers for the Regional economy.



Transportation



Safety and Security



Food/Water/Shelter



Health and Medical

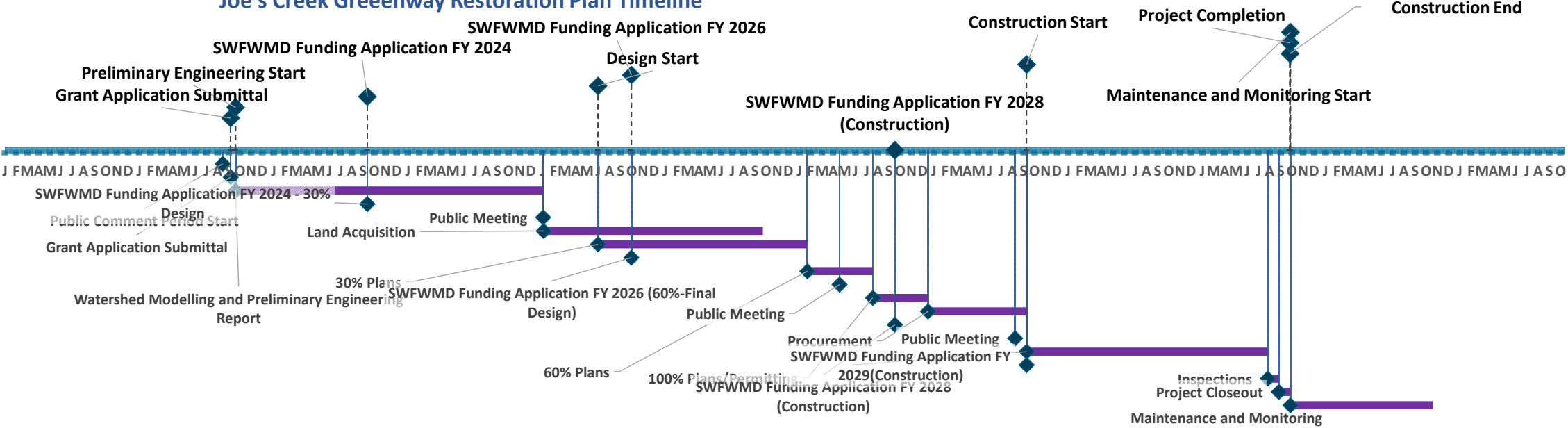


Economic Benefits

Joe's Creek Greenway Restoration Project			Public Notice Dates:	
			Start Date:	8/26/2021
			End Date:	9/10/2021
Entity:	Pinellas County Public Works			
Primary Contact:	Kelli Hammer Levy			
Date:	Monday, September 13, 2021			

Milestones and Tasks					
Activity		Start	End	Duration	Label
Design Start					
Task 1	8/26/2021	9/10/2021	15	Public Comment Period Start	
Task 2	9/17/2021	9/17/2021	0	Grant Application Submittal	
Task 3	10/1/2021	1/30/2024	851	Watershed Modelling and Preliminary Engineering Report	
Task 4	10/1/2022	10/1/2022	0	SWFWMD Funding Application FY 2024 - 30% Design	
Task 5	1/31/2024	1/31/2024	0	Public Meeting	
Task 6	2/1/2024	9/30/2025	607	Land Acquisition	
Task 7	7/1/2024	1/31/2026	579	30% Plans	
Task 8	10/1/2024	10/1/2024	0	SWFWMD Funding Application FY 2026 (60%-Final Design)	
Task 9	2/1/2026	8/1/2026	181	60% Plans	
Task 10	5/1/2026	5/1/2026	0	Public Meeting	
Task 11	8/1/2026	12/31/2026	152	100% Plans/Permitting	
Procurement					
Task 1	1/1/2027	9/30/2027	272	Procurement	
Task 2	10/1/2026	10/1/2026	0	SWFWMD Funding Application FY 2028 (Construction)	
Task 3	8/30/2027	8/30/2027	0	Public Meeting	
Construction					
Task 1	10/1/2027	7/30/2029	668	Construction	
Task 2	10/1/2027	10/1/2027	0	SWFWMD Funding Application FY 2029(Construction)	
Task 3	8/30/2027	8/30/2027	0	Public Meeting	
Close Out					
Task 1	7/30/2029	8/30/2029	31	Inspections	
Task 2	8/30/2029	9/30/2029	31	Project Closeout	
Task 3	10/1/2029	10/30/2030	394	Maintenance and Monitoring	

Joe's Creek Greenway Restoration Plan Timeline



FL CDBG Mitigation

General Infrastructure Program Project Budget (Template)

Project Name:	Joe's Creek Greenway Restoration Project	Primary Contact Name and Phone Number:	Kelli Hammer Levy 727-464-3317	Official Applicant Entity Name:	Pinellas County Bord of County Commissioners
Project		Budget		Justifications	
Description	CDBG-MIT Amount	Other non CDBG-MIT Funds	Source of Funds*	Total Funds (CDBG-MIT and Other)	
Design/Planning	\$ 1,586,250.00	\$ 2,658,750.00	Pinellas County CIP and Anticipated SWFWMD cooperative funding	\$ 4,245,000.00	Includes watershed management plan refinement, preliminary engineering report, trail outreach and planning, NEPA and NEPA outreach, channel outreach plan, design, permitting, district review, etc.
Drawings/Blueprints	\$ 1,001,250.00	\$ 1,223,750.00		\$ 2,225,000.00	Channel design and trail design including structures.
Watershed Model Refinement		\$ 350,000.00		\$ 350,000.00	Refine watershed model and confirm BMP/alternatives
Preliminary Engineering Report		\$ 370,000.00		\$ 370,000.00	Develop alternatives and conceptual plans and refine estimates
Surveys	\$ 337,500.00	\$ 412,500.00		\$ 750,000.00	Channel at 100', structures, CSX Underpass
Testing	\$ 90,000.00	\$ 110,000.00		\$ 200,000.00	Geotech for structures, channel, contamination screening
Environmental Review	\$ 112,500.00	\$ 137,500.00		\$ 250,000.00	NEPA Type II (including contamination screening)
Public Involvement	\$ 45,000.00	\$ 55,000.00		\$ 100,000.00	

Land Acquisitions	\$ -	\$ -		0	Currently no LA is required.
Permitting	\$ 56,250.00	\$ 68,750.00	Pinellas County CIP and Anticipated SWFWMD cooperative funding	\$ 125,000.00	CSX, 404/Wetlands (including delineation and fieldwork), ERP, ROW
Construction	\$ 14,192,623.10	\$ 17,346,539.34	Pinellas County CIP and Anticipated SWFWMD cooperative funding	\$ 31,539,162.31	Construction of channel, trail, associated structures, all clearing, earthwork removal, MOT, etc.
Construction Management	\$ 346,161.54	\$ 423,086.32		\$ 769,247.86	3%
General Contractor	\$ 2,838,524.61	\$ 3,469,307.85		\$ 6,307,832.46	25%
Bonding/Insurance	\$ 346,161.54	\$ 423,086.32		\$ 769,247.86	3%
Temporary Bypass	\$ 237,241.49	\$ 289,961.82		\$ 527,203.30	2%
Turbidity/Erosion Controls	\$ 154,420.23	\$ 188,735.84		\$ 343,156.07	1%
Temporary Cover (RECP, Sod, Seed)	\$ 112,639.87	\$ 137,670.95		\$ 250,310.81	1%
Clearing & Grubbing	\$ 56,544.31	\$ 69,109.72		\$ 125,654.03	0.4%
Earthwork (cut, fill, end-haul)	\$ 2,365,437.17	\$ 2,891,089.88		\$ 5,256,527.05	20%
Traffic Control/Public Safety	\$ 112,639.87	\$ 137,670.95		\$ 250,310.81	1%
VRSS	\$ 2,185,327.74	\$ 2,670,956.13		\$ 4,856,283.88	18%
Natural Channel Creation	\$ 1,126,676.56	\$ 1,377,049.13		\$ 2,503,725.70	9%
Wetland Creation	\$ 545,870.12	\$ 667,174.59		\$ 1,213,044.70	4%
Rip rap (bank and toe protection)	\$ 675,839.19	\$ 826,025.68		\$ 1,501,864.87	5%
Infrastructure Intersection Retrofits	\$ 278,367.38	\$ 340,226.79		\$ 618,594.17	2%
Trail Pavement/Structures	\$ 1,851,211.70	\$ 2,262,592.08		\$ 4,113,803.78	15%
Mobilization/Demobilization	\$ 959,559.78	\$ 1,172,795.29		\$ 2,132,355.07	9%
Administration	\$ 675,813.78	\$ 825,994.62	Pinellas County CIP and Anticipated SWFWMD cooperative funding	\$ 1,501,808.40	5%
Inspections	\$ 344,790.42	\$ 421,410.52	Pinellas County CIP and Anticipated SWFWMD cooperative funding	\$ 766,200.94	2.5%
Other BMPs and Previously Spent Funds		\$12,775,646	Pinellas County CIP plus Committed and	\$12,775,646	7 BMP (2028 cost) + Lealman + Previously Spent Studies (see Summary of Escalated cost calc.)

			Anticipated SWFWMD cooperative funding		
FC3&FC4		\$2,455,560		\$2,455,560	Full cost budget in attachments; leveraged funds only
FC7		\$1,877,808		\$1,877,808	Full cost budget in attachments; leveraged funds only
WQ1A		\$1,053,671		\$1,053,671	Full cost budget in attachments; leveraged funds only
WQ2		\$1,145,377		\$1,145,377	Full cost budget in attachments; leveraged funds only
WQ5		\$424,178		\$424,178	Full cost budget in attachments; leveraged funds only
WQ6A		\$620,629		\$620,629	Full cost budget in attachments; leveraged funds only
Lealman Regional Stormwater Facility		\$3,904,000		\$3,904,000	Full cost noted in CIP project 003001C
Previously Spent funds (See leveraged funds)		\$1,294,423		\$1,294,423	See Leveraged Funds Section for breakout and backup
Totals:	\$17,120,395	\$33,832,422		\$50,952,817	From escalated project budgets (attached) Trail \$14,537,885 plus Channel Restoration \$23,639,287 = \$38,177,171 Remaining water quality projects will be paid for by the County and are shown as leveraged funds on the leveraged funds sheet.
Percentage Amounts:	33.6%	66.4%			

*** All funds identified for use on your project must be fully disclosed and detailed to ensure budget accuracy and no duplication of benefits. Show the sources and amounts of other funds needed to complete the project below, including local funds and grants from other agencies. Any anticipated or committed funds must also be included.**

Source of Other Funds	Amount
1. Southwest Florida Water Management District, Cooperative Funding Initiative (CFI); contract currently under negotiation. Award execution is expected 10/21. CFI Agreement attached in application package.	\$360,000
2 Joe's Creek Greenway Restoration (PID 004116A) FY21-30 CIP Funding – the trail, channel restoration, and associated BMP are a single line item in the County CIP.	\$28,292,000
This project aligns with SWFWMD's strategic plan and future CFI funding is expected for multiple aspects of this project. CIP allocation includes anticipated future SWFWMD Cooperative Funding Initiative match funding at \$13.4 M. It is expected that future applications will be submitted in a phased approach, including design through 30%, design 60-100%, and construction, as the project progresses. NOTE: Current approved SWFWMD CFI Funding is pulled out separately and noted in item 1 of this table.	
3. Lealman Regional Stormwater Facility (PID 003001C) FY21-30 CIP Funding	\$3,904,000
4. Joe's Creek Greenway Trail Alignment Study (Forward Pinellas via HUD grant funding) Completed 2017	\$87,849
5. Joe's Creek Post-Hermine Study – Stormwater Operations Funds, Completed	\$131,574
6. Joe's Creek Watershed Management Plan (Half SWFWMD Cooperative Funding, half programmed Funds), Completed	\$535,000
7. Lealman Area Drainage Improvements (constructed in 2012), Completed	\$540,000

Leveraged Funding

The County has already committed over \$33.8 million past and future dollars toward this project through studies, project implementation, and programming through the Capital Improvement Plan (CIP). The County has pursued and obtained matching funds from the Southwest Florida Water Management District (SWFWMD) for watershed modelling and the preliminary engineering report and has allocated Penny for Pinellas funding for studies that support this project.

Table 1 delineates previously funded projects and future funding sources and projects. Funding from this FDEO grant will **directly support the development and implementation of this critical regional project, which will enable Pinellas County Public Works to deliver this project significantly sooner than would be possible without this funding.** The County is fully committed to providing the necessary matching funds for this grant and will align future CIP allocations to the current updated budget numbers developed for this grant application. To this end, the County is planning on pursuing the following funding opportunities:

- Building Resilient Infrastructure and Communities (BRIC) grant funding
- Upcoming Federal Emergency Management Agency (FEMA) COVID-19 Disaster Declaration Hazard Mitigation Grant Funding
- Future phase SWFWMD CFI Funding
- Advocating internally for American Recovery Act Funding.

The award of hazard mitigation dollars through this FDEO grant program will allow the County to complete these much-needed infrastructure improvements to provide a safe multimodal non-vehicular transportation corridor and vital flood mitigation benefits to the adjacent traditionally underserved communities of Pinellas County before, during, and after a severe weather event.

Table 1. Leveraged Funds

Source of Other Funds	Amount
1. Southwest Florida Water Management District, Cooperative Funding Initiative (CFI); contract currently under negotiation. Award execution is expected 10/21.	\$360,000
2 Joe's Creek Greenway Restoration (PID 004116A) FY21-30 CIP Funding – the trail, channel restoration, and associated BMP are a single line item in the County CIP. This project aligns with SWFWMD's strategic plan and future CFI funding is expected for multiple aspects of this project. CIP allocation includes anticipated future SWFWMD Cooperative Funding Initiative match funding at \$13.4 million. It is expected that future applications will be submitted in a phased approach, including design through 30%, design 60-100%, and construction, as the project progresses. <i>NOTE: Current approved SWFWMD CFI Funding is accounted for separately and noted in item 1 of this table.</i>	\$28,292,000
3. Lealman Regional Stormwater Facility (PID 003001C) FY21-30 CIP Funding	\$3,904,000
4. Joe's Creek Greenway Trail Alignment Study (Forward Pinellas via HUD grant funding) Completed 2017	\$87,849
5. Joe's Creek Post-Hermine Study – Stormwater Operations Funds, Completed	\$131,574
6. Joe's Creek Watershed Management Plan (Half SWFWMD Cooperative Funding, half programmed Funds), Completed	\$535,000
7. Lealman Area Drainage Improvements (constructed in 2012), Completed	\$540,000
Total	\$33,850,423

Capacity Plan

The Joe's Creek Greenway Restoration Project will improve floodplain capacity and water quality while offering recreational opportunities, supporting multimodal transportation, and creating improved resilience to flooding impacts for low- to moderate- income residents of Pinellas County. This project crosses underserved or marginalized communities in the Town of Kenneth City and the Lealman Community Redevelopment Area (LCRA), and involves the:

1. Restoration of the Joe's Creek Greenway including channel widening for improved water flow capacity and water quality, enhanced riparian habitat, and safe and sustainable multimodal trail as programmed by Forward Pinellas, the metropolitan planning organization for Pinellas County.
2. Implementation of a natural system flood mitigation and associated in-watershed improvements as identified in the Joe's Creek Watershed Management Plan (WMP) which will lower the base flood elevation (BFE) within the 100-year floodplain, reducing flood risk.

Stakeholders

Project stakeholders are Pinellas County Public Works (PCPW), Forward Pinellas, and the residents of Pinellas Park, the Town of Kenneth City, and the LCRA. Regional support for this project is shown through 14 letters of support, summarized in Table 1 and attached. This project is a high priority for the Forward Pinellas Advantage Pinellas 2045 Long Range Transportation Plan and Active Transportation Plan and is aligned with the adopted goals of the Pinellas County Wastewater/Stormwater Partnership, of which PCPW is a member.

Table 1. Stakeholder and Signatory for Letters of Support

Organization	Contact	Title
Federal Legislature	Gus Bilirakis	Representative
Federal Legislature	Charlie Crist	Representative
Pinellas County Board of County Commissioners	Dave Eggers	Chair, Pinellas County Commission
Forward Pinellas	Whit Blanton	Executive Director, Commissioner
Pinellas County Wastewater/Stormwater Partnership (PCWSP)	Charlie Justice	Chair, Pinellas County Wastewater/Stormwater Partnership Commissioner, At-Large District 3
Southwest Florida Water Management District	Jennette M. Seachrist	Division Director, Resource Management
Tampa Bay Regional Planning Council	Sean Sullivan	Executive Director
Florida Dream Center	Steve Cleveland	Chief Executive Officer
Pinellas Sheriff's Police Athletic League	Neil Brickfield	Director
City of St. Petersburg	Evan Mory	Director, Transportation & Parking Management
City of St. Petersburg	Brejesh Prayman	Director, Engineering and Director, Engineering and Capital Improvements
Pinellas Park Water Management District	Randal Roberts	Executive Director
Town of Kenneth City	Peter Cavalli	Town Manager
City of Pinellas Park	Doug Lewis	City Manager

Workplan

The Greenway Restoration element is within County owned Joe's Creek right of way. Other flood mitigation projects lie primarily within existing County rights of way or easements. PCPW has recently completed the solicitation process to select an external consultant via the CCNA process. The PCPW Capital Improvements Division will execute the grant award following adopted procedures from the County's Grant Center of Excellence (COE) in the following manner:

- (1) Execute grant award (Pinellas County Board of County Commissioners (BCC))
- (2) Complete watershed management plan update, alternatives refinement, and feasibility study (Consultant).
- (3) Complete environmental reviews, permitting, design, and bid and specification documents. (Consultant)
- (4) Solicit competitive bids (Purchasing and PM)
- (5) Select a contractor (Purchasing and PM)
- (6) Award the contract for construction (BCC)

Monitor compliance with CDBG-MIT (PM and Grants Center of Excellence) Pinellas County performs internal grant administration through the Grants COE, in the Office of Management & Budget (OMB), overseeing grant functions in coordination with Accounting and Purchasing. OMB maintains the Grants Operations Manual and internal COE SharePoint, with resources and requirements for compliance with Federal, State, and County laws and regulations. Internal controls follow the Standards for Internal Controls in the Federal "Green Book." Key duties and responsibilities are segregated to reduce the risk of error, misuse, or fraud. Each grant has a unique project number in the financial system for tracking, reporting, documentation, monitoring, and accountability. Internal forms, checklists, and monitoring ensure consistent quality and compliance, from project set-up, through procurement, to project closeout. Policies, procedures, and processes meet the requirements of Uniform Guidance for federal awards.

Upon grant award and execution by the BCC, the PM and Procurement will complete design and construction document preparation in accordance with design criteria and Pinellas County's standards. Designers through 30% have been secured for the project through a Request for Proposals (RFP) in accordance with (F.S.) 287.055, Consultants' Competitive Negotiation Act. This project will be completed using the traditional design/bid/build model. Construction contractors will be procured on a lowest responsive bid basis via an Invitation to Bid (ITB) in accordance with Pinellas County Purchasing ordinances and 84 FR45838. This process will include all required federal and state requirements for construction contracts that include, but are not limited to, Davis Bacon and Section 3.

Resources

Pinellas County plans capital budgets six years in advance and appropriates money annually. Capital projects implemented by the PCPW Capital Improvements Division are primarily funded through the Penny for Pinellas sales tax revenues, Local Option Fuel Tax, Impact Fees, and grants (state, local and federal). This project is an identified priority for delivery under the most recent Penny for Pinellas authorization.

County staff will proactively manage project tasks and compliance with CDBG-MIT requirements, supported by the County Grants COE and an external consultant. The proposed multi-division team that includes the external stakeholders as advisors and an external consultant. Internal staff members average 20 years each of capital improvement project execution, delivery, and project management experience. Dedicated multi-disciplinary project management support is provided through the Project Production Team offering guidance, oversight, and quality control/quality assurance (QA/QC).

The combined proposed team have successfully managed implementation of multi-year and multi-phase capital improvement projects (CIP) ranging in value from \$50,000 to \$27 million, including feasibility, design, construction, and maintenance/operation. PCPW Capital Improvements Division is experienced in the execution of large CIP, having successfully delivered approximately \$387 million of projects from 2015-2020. Likewise, Pinellas County Stormwater and Vegetation Division understands the commitment necessary to maintain facilities, budgeting \$17 million annually for maintenance and employing an O&M team of 77 professionals with the responsibility of maintaining similar projects. The Pinellas County Environmental Management Division (EMD) has implemented a water quality and habitat assessment program throughout local waters including Joes Creek since 1991. The monitoring program's operating budget is over \$1.1M annually. Pre and post project monitoring data will be reported to the public and the state through the County's Water Atlas, Website, and water information management system (WIMS), respectively.

The proposed delivery team consists of internal and external subject matter experts and stakeholders including planners, modelers, designers, administrative officials, external consultants, and support services. An organizational chart and resumes for key members are included in the attachments, and some members are highlighted in the following:

PROJECT MANAGER: Nancy C. Lamagna, PE, ENV SP, 25 years of experience in project management, stormwater engineering, drainage maintenance and environmental permitting. Currently manages CIP projects, drainage maintenance projects, and provides Adopt-A-Pond program technical support. She will serve as the overall internal project manager for planning, design, and construction projects.

ASSISTANT PROJECT MANAGER: Jennifer Shannon, PE, CFM, ENV SP, 26 years of experience with 19 years in project management, stormwater retrofits, site design review, complete streets, and stormwater operations, and worked as a consultant and at state, municipal, and county governments.

DESIGN ASSISTANCE: Rhonda Bowman, PE, CFM, ENV SP, 16 years of experience in water resources engineering and watershed evaluation and serves as the lead planning engineer for stormwater CIP Program for the PCPW Department. She has worked as a consultant and for county and state governments.

DESIGN AND PRODUCTION ASSISTANCE: Anita Wang, PE has over 20 years of civil engineering experience in site development and public infrastructure, ranging from planning, modeling, design, construction, to final certification.

DESIGN ASSISTANCE/ENVIRONMENTAL: Rob Burnes, MS, CPM, ENV SP experienced biologist with 12+ years of GIS, environmental management, and water quality related experience. Currently managing the Lake Seminole Restoration project worth over \$19 million dollars.

QA/QC AND OPERATIONS ADVISING: Nabil Bawany, PE, CFM, 9+ years of civil engineering experience, specifically in stormwater planning, and serves as the interim watershed planning section manager for the County.

QA/QC AND ENVIRONMENTAL ASSISTANCE: Paul Berlage, PE, CFM, ENV SP, 33 years of experience designing regional stormwater facilities, habitat restorations, and wetlands. His background is in biology and civil engineering.

Ongoing environmental monitoring and maintenance will be provided by the existing County EMD and Operations staff (organization charts depicting the individuals are attached). Overall, it is anticipated that converting the waterway to a more naturalized state will lower the overall maintenance requirements versus the current maintenance requirements.

Do you support Pinellas County's efforts to pursue a grant for flood protection, erosion control, water quality enhancements, drainage improvements and the construction of a new community greenway trail in the Joe's Creek Watershed (Lealman and Kenneth City area)? Please explain.

The deadline has passed

Li an kreyòl ayisyen

(https://oth.opengov.com/production/uploads/portals/255/forum/issue/11076/issue_asset/asset/10107/CDBG-MIT-Infrastructure-Round2-Krey%C3%B2l-ayisyen-Haitian-Creole-translation.docx)

Leer en español

(https://oth.opengov.com/production/uploads/portals/255/forum/issue/11076/issue_asset/asset/10108/CDBG-MIT-Infrastructure-Round2-ESPANOL.docx)

The U.S. Department of Housing and Urban Development provides grants through the Community Development Block Grant-Mitigation (CDBG-MIT) program to state and local governments. On June 16, 2021, the Department of Economic Opportunity launched the Rebuild Florida General Infrastructure Program Round 2 application cycle, making a total of \$175 million available for eligible applicants, including units of general local government. The CDBG-MIT program provides resources to address a wide range of mitigation projects that help Florida communities better withstand future disasters. Final proposals are due on Sept. 17, 2021.

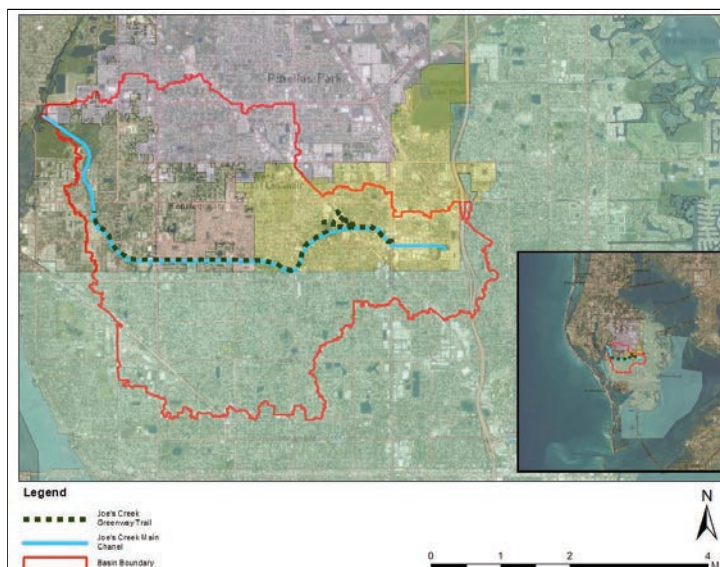
Pinellas County is seeking up to \$26 million in funding to improve mobility, resiliency and flood mitigation within the Joe's Creek Watershed. Pinellas County envisions a greatly improved Joe's Creek channel corridor that restores floodplain capacity and improves water quality while offering recreational opportunities, supporting multimodal transportation and creating improved resilience to flooding impacts.

The **Joe's Creek Greenway Restoration Project** combines two major infrastructure improvement projects that run through low to moderate income areas of the Town of Kenneth City and the Lealman Community Redevelopment Area:

1. **Restoration of the Joe's Creek Greenway**, including channel widening for improved capacity and water quality and riparian habitat enhancements and a multimodal trail as programmed by Forward Pinellas, the metropolitan planning organization for Pinellas County.
2. **Implementation of flood mitigation projects** identified in the Joe's Creek Watershed Management Plan, which will lower the base flood elevation within the 100-year floodplain, reducing flood risk.

This project includes preliminary engineering, design and construction of the Joe's Creek Greenway improvements, adjacent drainage channel improvements, a Lealman regional stormwater facility, a multimodal trail and projects identified by the watershed management plan. Goals of the project include watershed-wide flood protection, erosion control and water quality improvements. These projects will minimize risk, improve resiliency and catalyze redevelopment in the Lealman Community Redevelopment Area and in the low to moderate income areas of the watershed. These efforts are highly interdependent and will benefit from a coordinated single project approach.

(The map below shows the Joe's Creek Watershed boundary, the main channel of Joe's Creek and the proposed path of the new greenway trail)



read less

Past Deadline

The deadline for posting statements was today at 5:00 PM

Subscribe to receive important updates about Infrastructure Grant: Joe's Creek Greenway Restoration - Pinellas County.

[🔗 Learn More](#)

Feedback

This topic has 39 visitors and 10 statements.

That's 30 minutes of public comment @ 3 minutes per statement.

View Statements (https://www.opentownhall.com/portals/255/Issue_11076/statements)

Topic:

Subvención para infraestructuras: Restauración de Joe's Creek Greenway – Condado Pinellas

Question:

¿Apoya usted los esfuerzos del Condado Pinellas para conseguir una subvención para la protección contra inundaciones, control de la erosión, mejoras de la calidad del agua, mejoras de drenaje y la construcción de una nueva vereda comunitario en la cuenca de Joe's Creek (área de Lealman y Kenneth City)?

Introduction:

El Departamento de Vivienda y Desarrollo Urbano de los Estados Unidos otorga subvenciones a través del programa de Subvención en Bloque para el Desarrollo de la Comunidad-Mitigación (CDBG-MIT) a los gobiernos estatales y locales. El 16 de junio de 2021, el Departamento de Oportunidades Económicas lanzó el ciclo de solicitud de la Ronda 2 del Programa de Infraestructura General de Reconstrucción de la Florida, poniendo un total de \$175 millones a disposición de los solicitantes elegibles, incluidas las unidades del gobierno local general. El programa CDBG-MIT ofrece recursos para atender una amplia gama de proyectos de mitigación que ayudan a las comunidades de la Florida a resistir mejor futuras catástrofes. Las propuestas finales deben presentarse antes del 17 de septiembre de 2021.

El Condado Pinellas solicita hasta \$26 millones en fondos para mejorar la movilidad, la resistencia y la mitigación de inundaciones dentro de la cuenca de Joe's Creek. El Condado Pinellas vislumbra un mejorado corredor del canal de Joe's Creek que restablece la capacidad del terreno inundable y mejora la calidad del agua, al tiempo que ofrece oportunidades recreativas, apoya el transporte multimodal y crea una mayor resistencia a los impactos de las inundaciones.

El **Proyecto de Restauración de Joe's Creek Greenway** combina dos importantes proyectos de mejora de infraestructuras que se extienden por zonas de bajos a moderados ingresos de la ciudad de Kenneth City y el área de reurbanización de la comunidad de Lealman (Lealman CRA):

1. **La Restauración de Joe's Creek Greenway**, que incluye la ampliación del canal para mejorar la capacidad y la calidad del agua, así como la mejora del hábitat ribereño y una vereda multimodal, según lo programado por Forward Pinellas, la organización de planificación metropolitana del Condado Pinellas.

2. Implementación de proyectos de mitigación de inundaciones identificados en el Plan de Administración de la Cuenca de Joe's Creek, que reducirá la elevación de la inundación base del terreno inundable, reduciendo el riesgo de inundación.

Este proyecto incluye la ingeniería preliminar, el diseño y la construcción de las mejoras de Joe's Creek Greenway, las mejoras del canal de drenaje adyacente, una instalación regional de aguas pluviales de Lealman, una vereda multimodal y los proyectos identificados por el plan de administración de la cuenca. Los objetivos del proyecto incluyen la protección contra las inundaciones en toda la cuenca, el control de la erosión y la mejora de la calidad del agua. Estos proyectos minimizarán el riesgo, mejorarán la capacidad de recuperación y catalizarán la reurbanización en el Área de Reurbanización de la Comunidad de Lealman (Lealman CRA) y en las zonas de ingresos bajos a moderados de la cuenca. Estos esfuerzos son altamente interdependientes y se beneficiarán de un enfoque coordinado de proyecto único.

Comment Deadline: 5:00 PM on September 10, 2021

Contact:

Anita Wang, P.E., Env-SP
Engineer 2, Stormwater & Parks Engineering
Pinellas County Public Works
727-464-8934 | awang@pinellascounty.org

Sijè:

Enfrastrikti Grant: Joe's Creek Greenway Restorasyon - Konte Pinellas

Kesyon:

Èske ou sipòte efò Konte Pinellas pou pouswiv yon sibvansyon pou pwoteksyon kont inondasyon, kontwòl ewozyon, amelyorasyon kalite dlo, amelyorasyon drenaj ak konstriksyon yon nouvo santye kominote vèt nan basen vèsan Joe's Creek (zòn Lealman ak Kenneth City)?

Entwodiksyon:

Depatman Lojman ak Devlopman Iben Etazini bay sibvansyon atravè pwogram Sibvansyon Kominotè pou Devlopman Kominotè (CDBG-MIT) bay gouvènman leta ak lokal yo. 16 jen 2021, Depatman Opòtinite Ekonomik te lanse pwogram aplikasyon Rekonstwi Florid Jeneral enfrastrikti wonn 2, ki fè yon total \$ 175 milyon disponib pou aplikan ki kalifye yo, ki gen ladan inite gouvènman lokal jeneral yo. Pwogram CDBG-MIT la bay resous pou adrese yon pakèt pwojè atenuasyon ki ede kominote Florid yo pi byen kenbe tèt ak katastwòf kap vini yo. Pwopozisyon final yo dwe 17 septanm 2021.

Konte Pinellas ap chèche jiska \$ 26 milyon nan finansman pou amelyore mobilite, rezistans ak alèjman inondasyon nan basen vèsan Joe's Creek la. Konte Pinellas prevwa yon koridò chanèl Joe's Creek anpil amelyore ki retabli kapasite plèn inondasyon ak amelyore kalite dlo pandan y ap ofri opòtinite lwazi, sipòte transpò multimodal ak kreye amelyore detèminasyon nan enpak inondasyon.

Joe's Creek Greenway Restoration Project la konbine de gwo pwojè amelyorasyon enfrastrikti ki kouri nan zòn revni ki ba a modere nan vil Kenneth City ak Lealman Community Redevelopment Area:

1. **Retablisman Joe's Creek Greenway**, ki gen ladan elajisman kanal pou amelyore kapasite ak bon jan kalite dlo ak amelyorasyon abita ripary ak yon santye multimodal jan pwograme pa Forward Pinellas, òganizasyon an planifikasyon metwopoliten pou Pinellas County.
2. **Aplikasyon pwojè alèjman inondasyon** idantifye nan Joe's Creek Watershed Management Plan an, ki pral bese elevasyon inondasyon baz la nan plenn inondasyon 100 ane a, diminye risk inondasyon.

Pwojè sa a gen ladan jeni preliminè, konsepsyon ak konstriksyon amelyorasyon Joe's Creek Greenway, amelyorasyon kanal drenaj adjasan, yon etablisman dlo lapli rejyonal Lealman, yon santye multimodal ak pwojè idantifye nan plan jesyon basen vèsan an. Objektif pwojè a gen ladan pwoteksyon kont inondasyon nan tout basen vèsan, kontwòl ewozyon ak amelyorasyon kalite dlo. Pwojè sa yo pral minimize risk, amelyore rezistans ak katalize redevlopman nan Zòn Redevlopman Kominote Lealman ak nan zòn revni ki ba a modere nan basen vèsan an. Efò sa yo trè entèdepandan epi yo pral benefisye de yon apwòch kowòdone pwojè sèl.

Dat limit kòmantè: 5:00 PM sou septanm 10, 2021

Kontakte:

Anita Wang, PE, Env-SP
Enjenyè 2, Dlo Tanpèt & Pak Jeni
Travo Piblik Konte Pinellas
727-464-8934 | awang@pinellascounty.org



Infrastructure Grant: Joe's Creek Greenway Restoration - Pinellas County

September 10, 2021, 5:03 PM

Contents

i.	Summary of registered statements	2
ii.	Individual registered statements	3

Infrastructure Grant: Joe's Creek Greenway Restoration - Pinellas County

Do you support Pinellas County's efforts to pursue a grant for flood protection, erosion control, water quality enhancements, drainage improvements and the construction of a new community greenway trail in the Joe's Creek Watershed (Lealman and Kenneth City area)? Please explain.

Summary Of Registered Statements

As of September 10, 2021, 5:03 PM, this forum had:		Topic Start
Attendees:	38	August 26, 2021, 4:15 PM
Registered Statements:	10	
Minutes of Public Comment:	36	

Infrastructure Grant: Joe's Creek Greenway Restoration - Pinellas County

Do you support Pinellas County's efforts to pursue a grant for flood protection, erosion control, water quality enhancements, drainage improvements and the construction of a new community greenway trail in the Joe's Creek Watershed (Lealman and Kenneth City area)? Please explain.

Individual Registered Statements

Name not shown

inside Zip Code 33709

August 28, 2021, 3:13 PM

I'm not knowledgeable on flooding, erosion, water quality or drainage issues, but believe all should be strengthened before more climate change impacts are felt. What I do know is that walking beside Joe's Creek on a near-daily basis is one of my great joys of living in Florida. Occasional sightings of manatees and dolphins are thrilling and educational. And always there are various birds to be admired. Currently I have access to only about a quarter mile of the creek inside our mobile home park and would really love to be able to travel further along the creek.

Jan Allyn

inside Zip Code 33773

August 31, 2021, 4:38 PM

I grew up in the Lealman neighborhood. Its residents are mostly living at or near the poverty level, with low property taxes and historically insufficient infrastructure investment. Stormwater infrastructure is notably lacking. The Community Redevelopment Area designation has helped somewhat, but there is plenty left to do to help the Lealman neighborhood. This project would do much to reduce flooding and provide enhanced recreation opportunities, including providing connectivity to the Raymond H. Neri Community Park. The County is to be commended for pursuing this funding for a very worthy project.

Richard Miller

inside Zip Code 33709

September 3, 2021, 11:29 PM

With all of the new construction with increased height of the new foundations. We are in need of drainage mitigation. Please take into consideration.

Hugh Ririe

inside Zip Code 33709

September 6, 2021, 7:58 PM

Joes creek is out my front door, we live in a single lane road as it is on a dead end 42 ave cars entering the street have to pull into the grass to pass as it is and you want to install another bike trail with asphalt and metal guard rails? No thank you we have gone to every meeting the county has had on this and apparently it's falling on deaf ears there is not room on this small strip of grass for your trail. The garbage truck has to back down the road as it is and what about fire trucks, EMT Amazon delivery there is not enough room. Please leave joes creek alone. It's a green space remember that before you ruin it.

Chris & Barb Lloyd

inside Zip Code 33709

September 7, 2021, 9:04 AM

Joes creek is out my front door, our street is a single lane dead end. Any vehicles entering the street have to pull into the grass you want to use for the trail to pass. You adding a bike trail with asphalt and metal guard rails will cause access limitations that will be dangerous when an emergency occurs. we have gone to every meeting the county has had on this and you are not listening or apparently don't care there is not room on this small strip of grass for your trail. Presently all delivery service has to back down the road and what about fire trucks, EMT, Garbage pickup, there is not enough room. Please leave joes creek alone on the 5700 block of 42nd Avenue. Find another route.

elizabeth RIRIE

inside Zip Code 33709

September 7, 2021, 10:11 AM

To think that the trail would be built in front of our house is just plain ridiculous. As it is, our road is not even wide enough as it is.....we are a street of just seven houses and the trail could easily be run on a north/south right of way

Infrastructure Grant: Joe's Creek Greenway Restoration - Pinellas County

Do you support Pinellas County's efforts to pursue a grant for flood protection, erosion control, water quality enhancements, drainage improvements and the construction of a new community greenway trail in the Joe's Creek Watershed (Lealman and Kenneth City area)? Please explain.

just east of our homes and connect to the huge walkway just finished on 46th avenue. None of us want to look out our front door at a trail and a fence or anything for that matter! Back to the drawing board with something that would have less of an impact to our quality of life.

Marianne Easton

inside Zip Code 33709

September 7, 2021, 2:03 PM

Ok if not down 42nd Avenue as it is a one lane dead end street. Firetruck, ambulances, garbage trucks would have trouble turning around and also no place for parking in the grass. It work on the otherside by the condos but not on 42nd.

Ida and Leonard Wears

inside Zip Code 33709

September 7, 2021, 6:40 PM

Putting any kind of trail on the 5700 blk of 42nd Ave is ridiculous. This is a single lane rd facing Joes Creek and a dead end. It's not even wide enough for large trucks to turn around they have to back up to exit 42nd Ave nor can 2 vehicles fit at one time going opposite directions. A trail would block all abilities and most importantly emergency vehicles entering or exiting. Do not build!!!

Melinda Schneider

inside Zip Code 33714

September 7, 2021, 7:45 PM

Yes, There needs to be a community greenway trail into the Lealman and Kenneth City area for residents to be able to walk, jog, and ride a bike safely. This will promote a better and healthy community.

Flood protection, erosion control, water quality enhancements, drainage improvements are all needed in both Lealman and Kenneth City area. Each year the storms and hurricanes are getting stronger. Areas of these communities are now having flooding issues they never had to deal with in the past.

It is also important the the water quality of Joe's Creek is

kept clean and flowing not only for aesthetics but for the wildlife that relies on the watershed.

Neil Brickfield

inside Zip Code 33714

September 10, 2021, 3:17 PM

Joe's Creek Greenway is one of the most impaired waterways in Pinellas County! It is also the home to a valuable estuary. In one of the toughest neighborhoods in Pinellas, a long neglected area, this project is critical to improving the community. Erosion control? you wouldn't let your kids close to the Joe's Creek banks, they are too steep. A greenway trail? One of the lowest car ownership rates in Pinellas, people are bike dependent for transportation, ever carry your groceries on a bike? This waterway needs improvement, the birds and fish need clean water, the old-timers tell me about how they would swim in Joe's creek, not today. It's time to make a positive impact on the lives and environment of this community.



Infrastructure Grant: Joe's Creek Greenway Restoration - Pinellas County

September 10, 2021, 5:07 PM

Contents

i.	Summary of unregistered statements	2
ii.	Individual unregistered statements	3

Infrastructure Grant: Joe's Creek Greenway Restoration - Pinellas County

Do you support Pinellas County's efforts to pursue a grant for flood protection, erosion control, water quality enhancements, drainage improvements and the construction of a new community greenway trail in the Joe's Creek Watershed (Lealman and Kenneth City area)? Please explain.

Summary Of Unregistered Statements

As of September 10, 2021, 5:07 PM, this forum had:		Topic Start
Attendees:	38	August 26, 2021, 4:15 PM
Unregistered Statements:	2	
Minutes of Public Comment:	36	

Infrastructure Grant: Joe's Creek Greenway Restoration - Pinellas County

Do you support Pinellas County's efforts to pursue a grant for flood protection, erosion control, water quality enhancements, drainage improvements and the construction of a new community greenway trail in the Joe's Creek Watershed (Lealman and Kenneth City area)? Please explain.

Individual Unregistered Statements

Name not available
August 27, 2021, 6:23 PM

Why would we spend money on new water systems when the one we have are in shambles? We have County wide releases every year, and our water can not sustain. Please spend the money fixing our current issues vs building more.

Name not available
September 2, 2021, 6:13 PM

It is admirable and imperative that Pinellas County is seeking funding for enhancements to the Joes Creek watershed. Projects that furthers the natural beauty of Lealman and surrounding areas should be pursued. If we are to continue to be good stewards to our waterways, provide safe and clean communities to residents and the eventual recreation provided via the Joes Creek trail we will set up a community that is far better then the one we inherited. The Lealman CRA advisory committee fully supports this endeavor.