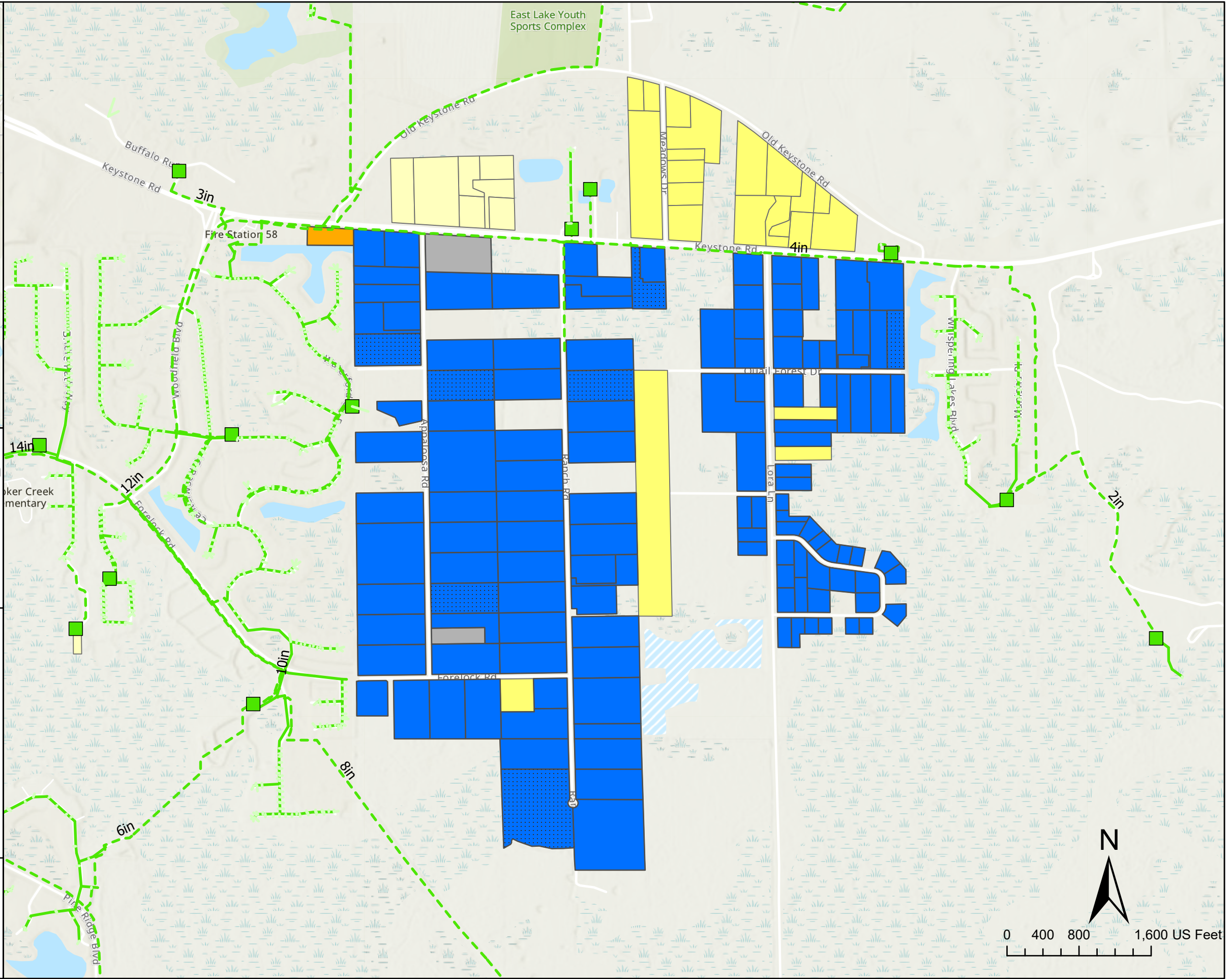


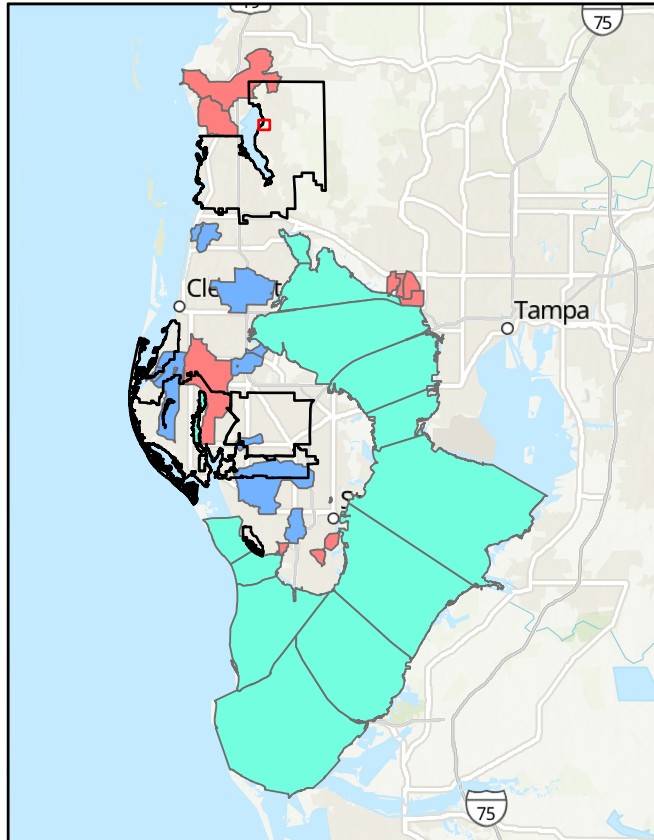
PID 004167A
Wastewater Collection System Program
Septic to Sewer Program
Pinellas County Utilities
7/13/2022

L65LoraLn and L70RanchRd

- Legend**
- Lift Stations**
- PINELLAS COUNTY
- Wastewater Lines**
- PINELLAS COUNTY-Force Main
 - PINELLAS COUNTY-Gravity Main
 - PINELLAS COUNTY-Lateral
- Septic Parcels**
- Residential
 - Institutional
 - No Land Use Code
 - Multi Family
 - Outliers
 - > 100 FT



PATH: O:\GIS\Projects\44335-019\ArcGISPro\Task8\IPCU_Task8_BS\IPCU_Task8_BS.aprx



PID 004167A
 Wastewater Collection System Program
 Septic to Sewer Program
 Pinellas County Utilities
 7/15/2022

L11BryanLn

Legend

Lift Stations

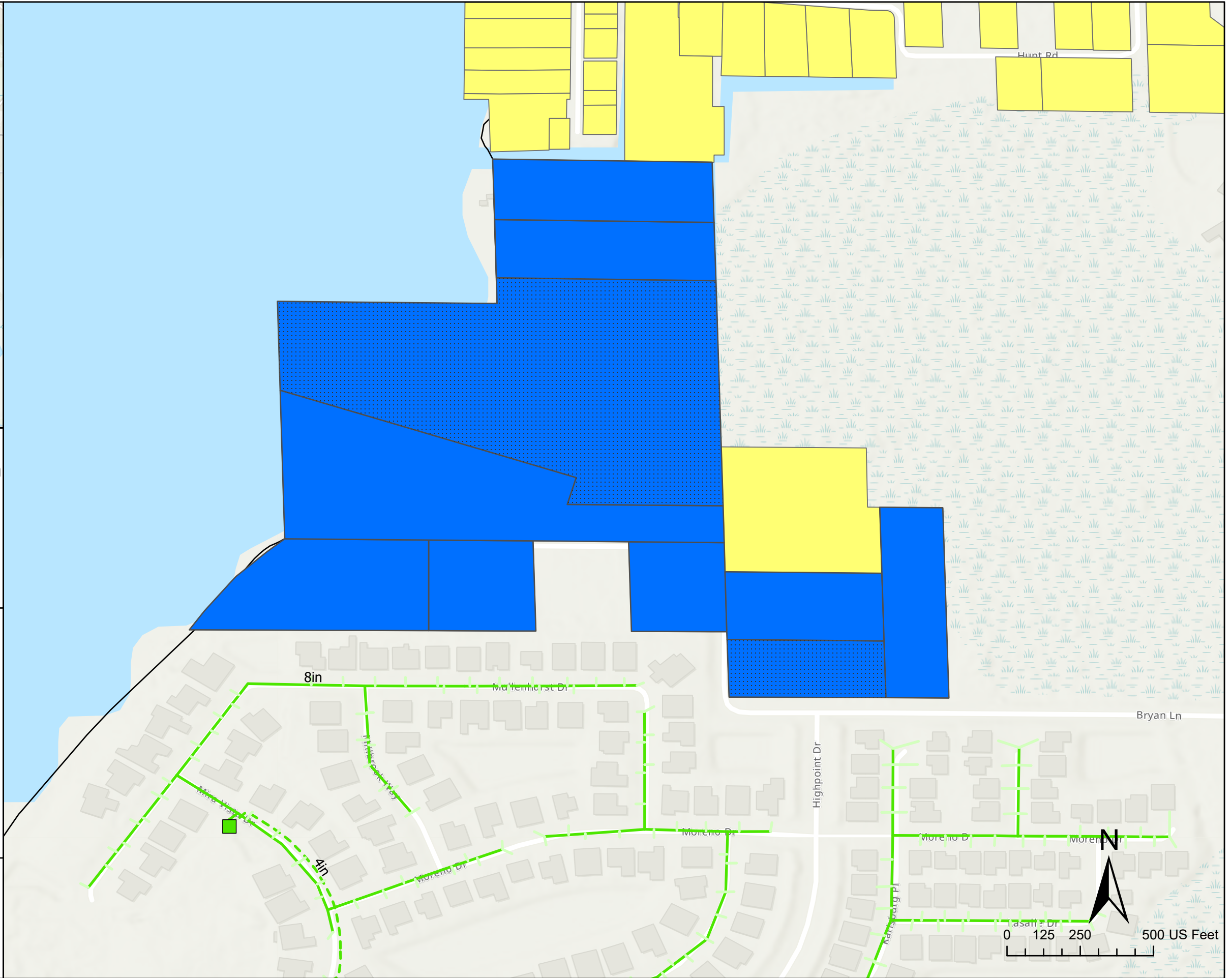
PINELLAS COUNTY

Wastewater Lines

- PINELLAS COUNTY-Force Main
- PINELLAS COUNTY-Gravity Main
- PINELLAS COUNTY-Lateral

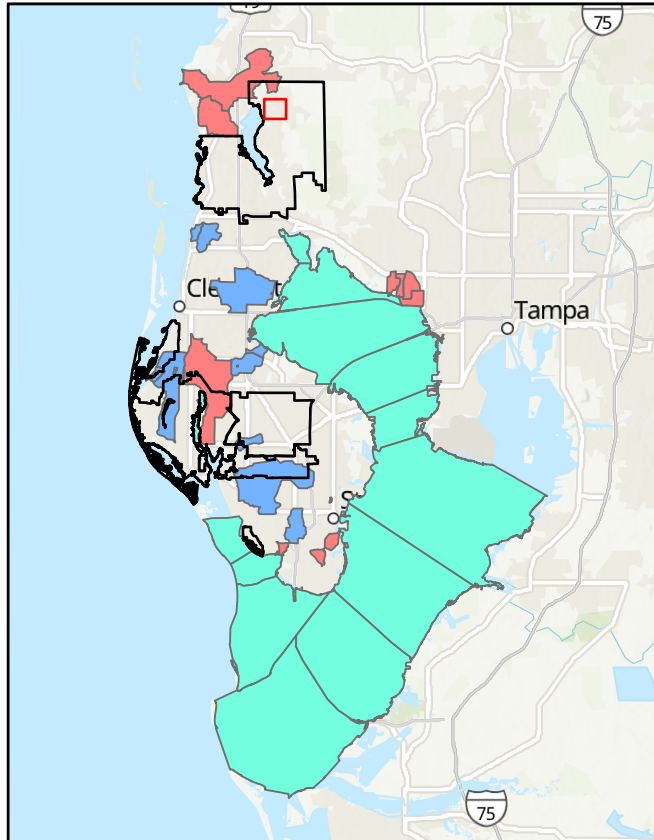
Septic Parcels

- Residential
- Multi Family
- >100 FT



PATH: O:\GIS\Projects\44335-019\ArcGISPro\Task_8\PCU_Task8_BSI\PCU_Task8_BS.aprx

Sources: Esri, Airbus DS, USGS, NGA, NASA, CGIAR, N Robinson, NCEAS, NLS, OS, NMA, Geodatastyrelsen, Rijkswaterstaat, GSA, Geoland, FEMA, Intermap and the GIS user community, Esri Community Maps Contributors, City of Tampa, County of Pinellas, FDEP, © OpenStreetMap, Microsoft, Esri, HERE, Garmin, SafeGraph, GeoTechnologies, Inc, METI/NASA, USGS, EPA, NPS, US Census Bureau, USDA, University of South Florida, County of Pinellas, FDEP, Esri, HERE, Garmin, SafeGraph, FAO, METI/NASA, USGS, EPA, NPS, Esri, USGS



PID 004167A
Wastewater Collection System Program
Septic to Sewer Program
Pinellas County Utilities
7/13/2022

L57DogwoodTrce

Legend

Lift Stations

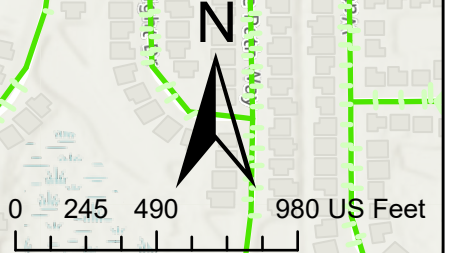
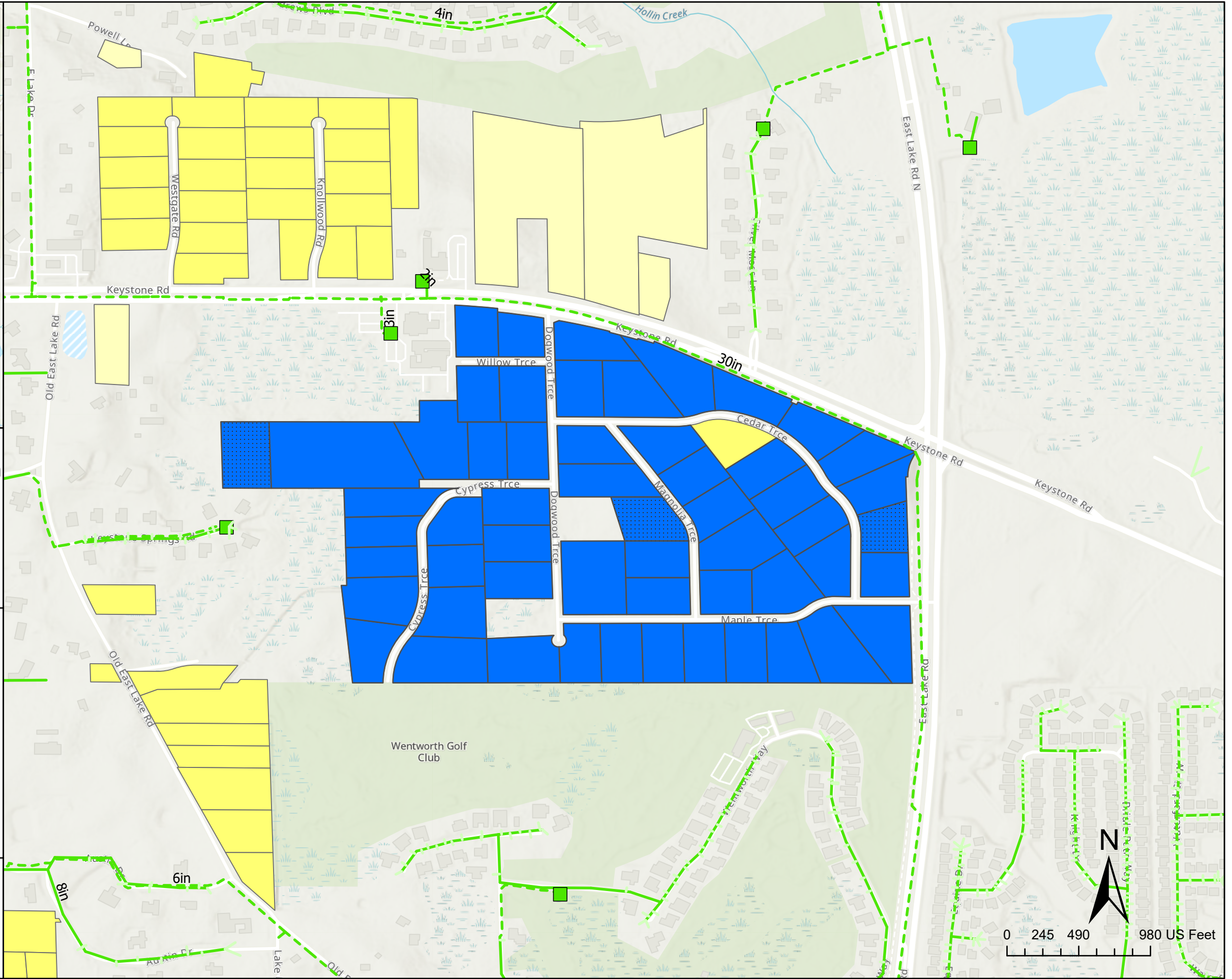
PINELLAS COUNTY

Wastewater Lines

- PINELLAS COUNTY-Force Main
- PINELLAS COUNTY-Gravity Main
- PINELLAS COUNTY-Lateral

Septic Parcels

- Residential
- Multi Family
- Outliers
- >100 FT



PATH: O:\GIS\Projects\44335-019\ArcGISPro\Task_8\PCU_Task8_BSI\PCU_Task8_BS.aprx