

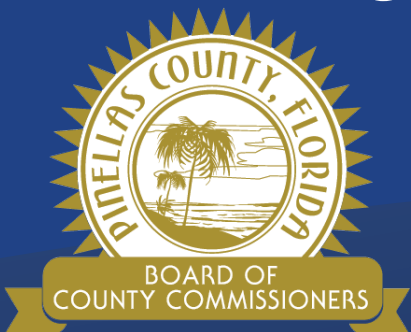
Sustainability & Resiliency Action Plan



County Administration

Hank Hodde, MS, CFM, ENV SP

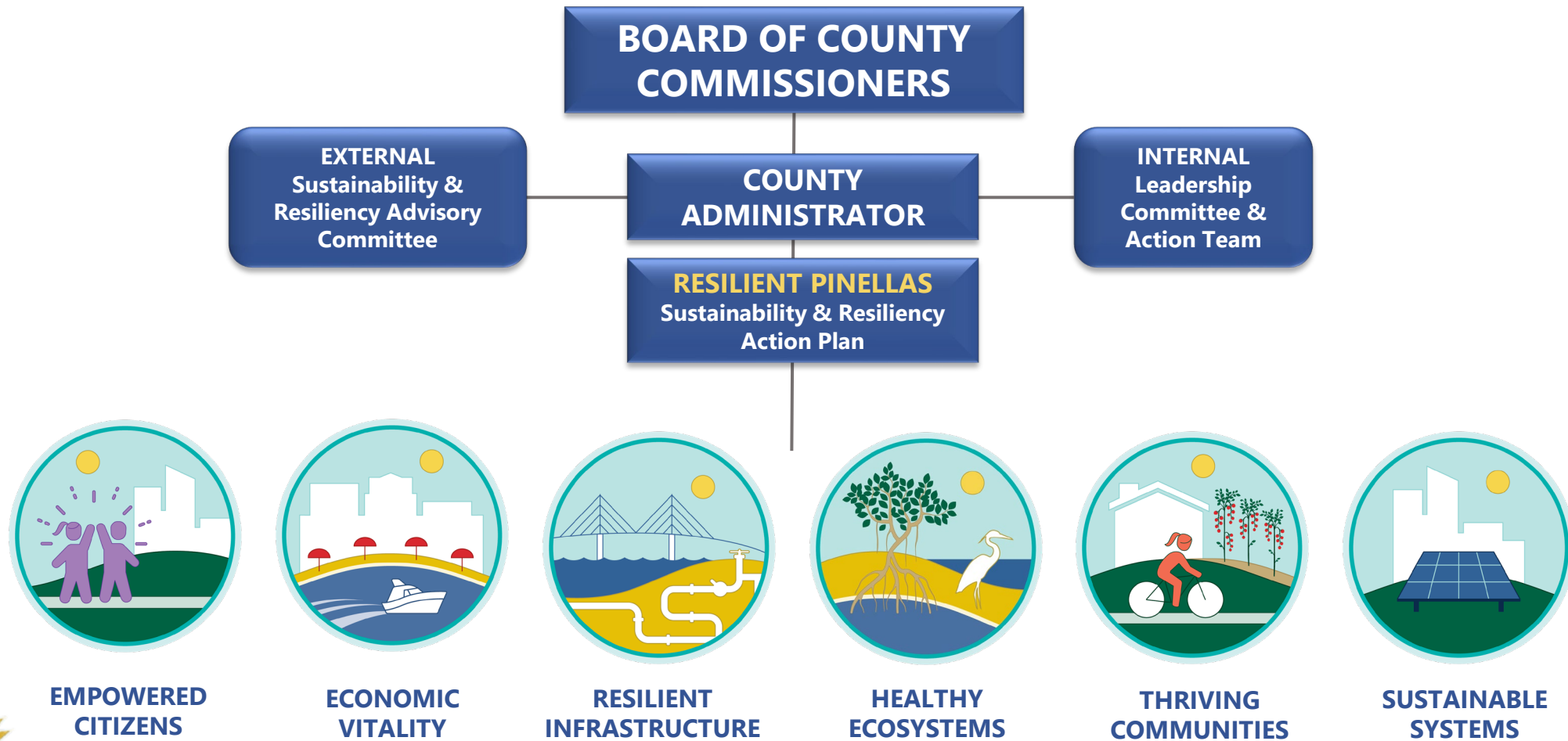
Sustainability & Resiliency Coordinator



Our Vision: To Be the Standard for Public Service in America



Organizational Structure



SRAP Development & Alignment

Focus Areas, Goals & Action Items informed by:

- Baseline Assessment
- Internal Engagement
- Local and Regional Best Practices
- Prioritization Process
- External Engagement
 - Sustainability and Resiliency Advisory Committee
 - Public Survey

NATIONAL



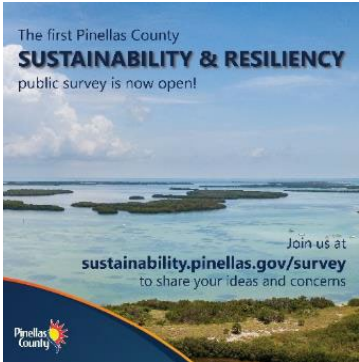
REGIONAL



LOCAL



Sustainability and Resiliency Public Survey



- **Open for four weeks** (Fall of 2021)
- **1,299 survey responses**
- Gained important insight on:
 - **climate change**
 - **Visibility** of efforts
 - **Stresses and barriers**
 - **Future actions**
- Survey results helped to **inform plan development**

Top shocks or stressors from survey participants:



ALGAL BLOOMS
75.6%



LACK OF AFFORDABLE HOUSING
55.0%



HURRICANES,
74.6%



POOR WATER QUALITY IN RIVERS, LAKES AND BAYS,
41.1%



COASTAL HAZARDS,
62.1%



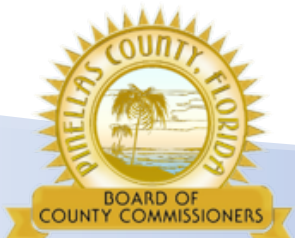
AGING INFRASTRUCTURE,
40.7%



SEVERE STORMS & RAINFALL,
50.9%



TRAFFIC & CONGESTION,
40.7%



Vision and Guiding Principles

OUR VISION:

Pinellas County **sets the standard** for sustainability and resiliency practice by **integrating** its resources, embracing **innovation** and setting **bold policy** to support **future** generations.



SRAP Focus Areas



EMPOWERED CITIZENS

- 2 Goals
- 3 Existing Best Practices
- 10 Proposed Future Action Items



THRIVING COMMUNITIES

- 3 Goals
- 6 Existing Best Practices
- 10 Proposed Future Action Items



RESILIENT INFRASTRUCTURE

- 3 Goals
- 9 Existing Best Practices
- 9 Proposed Future Action Items



ECONOMIC VITALITY

- 3 Goals
- 5 Existing Best Practices
- 7 Proposed Future Action Items



HEALTHY ECOSYSTEMS

- 3 Goals
- 5 Existing Best Practices
- 8 Proposed Future Action Items



SUSTAINABLE SYSTEMS

- 4 Goals
- 10 Existing Best Practices
- 13 Proposed Future Action Items

Preliminary New Initiatives



EMPOWERED CITIZENS

- Neighborhood Resilience Hubs
- New public education campaigns
- Health in All Policies data portal
- Awareness of green building incentives



THRIVING COMMUNITIES

- Mobility analysis for employment centers
- Food recovery networks
- New opportunity zones for resilient development
- Update Post-Disaster Redevelopment Plan



RESILIENT INFRASTRUCTURE

- Adaptation Action Areas
- Expanding policies from vulnerability assessments
- Green infrastructure pilot projects
- Parametric Insurance



ECONOMIC VITALITY

- Residential mitigation/retrofit program
- Accessory dwelling unit (ADU) pilot program
- Green business marketing campaigns



HEALTHY ECOSYSTEMS

- Recreation, Open Space and Cultural Systems Master Plan
- Parks as living laboratories
- Support habitat migration

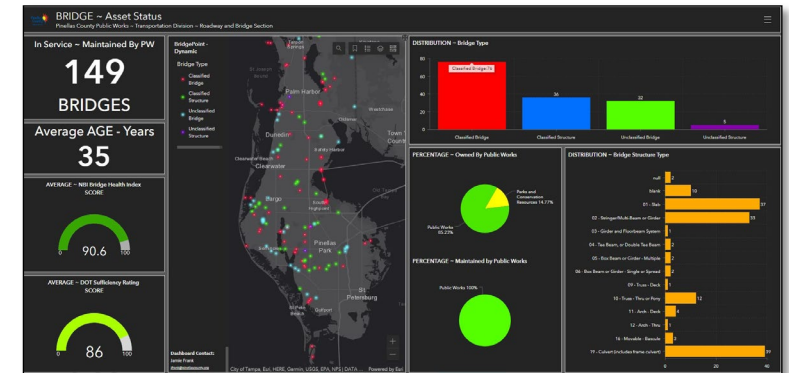


SUSTAINABLE SYSTEMS

- Energy audits for facilities and structures
- Micro-grids at critical facilities
- Solar feasibility analyses

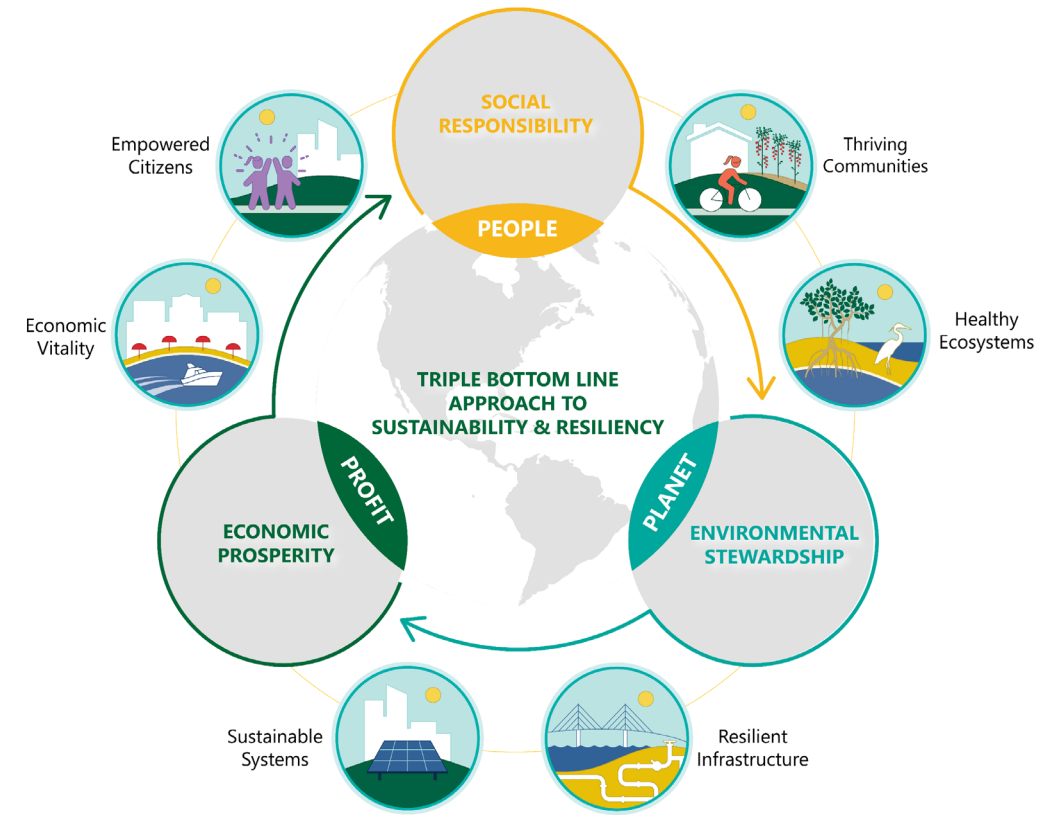
Implementation: Leadership and Decision-Making

- 1) We will **commit the organization's resources to execute** the goals and actions of the Sustainability & Resiliency Action Plan.
- 2) We will **integrate** sustainability and resiliency into **existing processes** and track **future performance**.
- 3) We will foster a **culture of innovation** to increase opportunity for more sustainable or resilient **outcomes**.

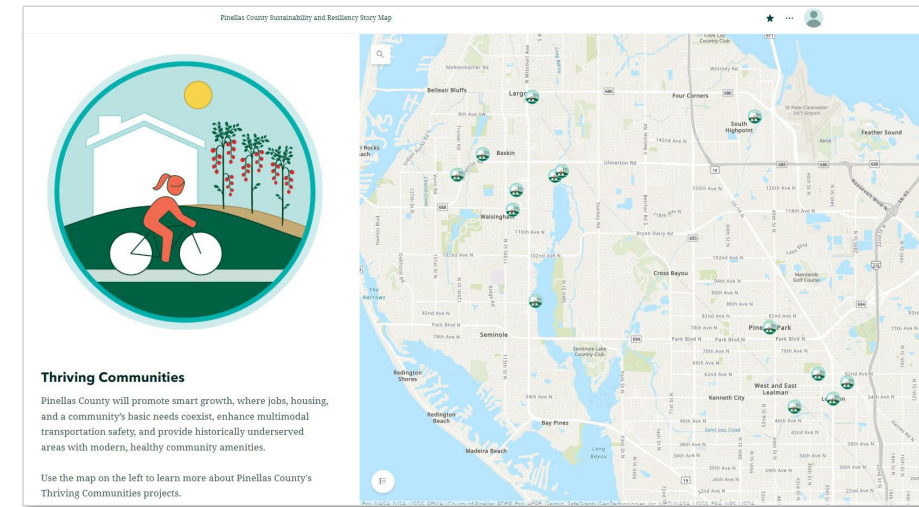
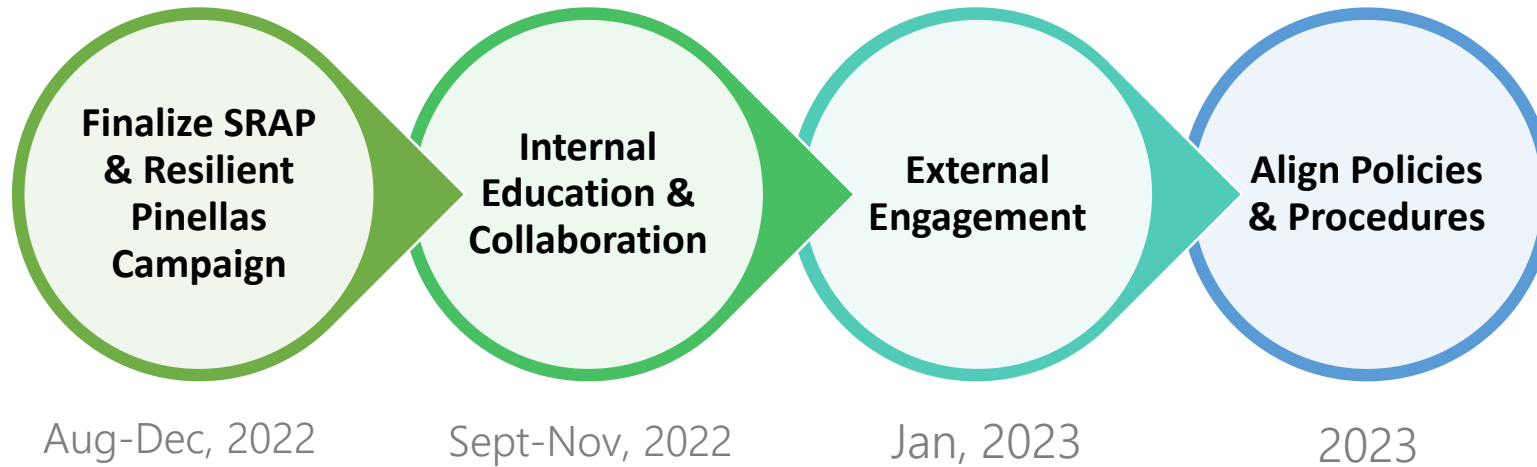


Other Implementation Measures

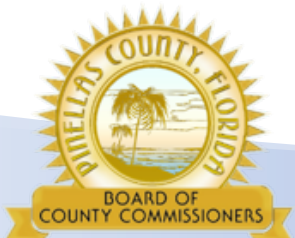
- **Sea Level Rise and Storm Surge Vulnerability Assessment**
- **Green House Gas (GHG) Emissions Inventory**
- **Return on Investment Guidance**
- **Clean Energy Roadmap**



Looking Forward



Visit our Storymap to learn more about the SRAP
Resilient.Pinellas.Gov





Thank you!

Hank Hodde, M.S., CFM, ENV SP
Sustainability & Resiliency Coordinator
hhodde@pinellascounty.org
727-464-3485