

MEDICAL EXAMINER'S OFFICE

Department Director: Dr. Jon Thogmartin

<http://www.pinellascounty.org/forensics/default.htm>

Department Purpose

The Medical Examiner (ME) safeguards the rights of each citizen who dies in Pinellas County by determining the cause and manner of death according to the responsibilities and obligations in Chapter 406, Florida Statutes. The Medical Examiner's Office provides both forensic medicine services (investigation of sudden, unexpected, or suspicious death) and forensic laboratory services (chemical and drug analyses) to Pinellas County on a contractual basis.

Topics for Discussion

- The interlocal agreement with Pasco County for the use of the ME facility expires on 09/30/2022. The County has developed a new per autopsy rate agreement to propose to Pasco County that covers the facility costs for the additional load. These discussions will begin over the next month.
- Increases with five (5) fees paid by Pasco County for the Medical Examiner's Services.
 - New Fee - DNA Decedent ID (tooth or bone)
 - Estimated additional revenue of \$246,000 for new fees
- There are no proposed changes in User Fees for FY23 (see attached report).

Budget Summary

The FY23 revenues for the Medical Examiner are decreasing by \$21,350, or 1.2%, over the FY22 budget. The decline in revenues is associated with the receipt of less Federal Grant funding.

Department/ Agency	Revenue Account	2022			2023		
		General Fund	Non-Gener al Fund	Total	General Fund	Non-Gener al Fund	Total
Medical Examiner	Intergovernmental Revenue	\$708,660		\$708,660	\$665,710		\$665,710
	Charges for Services	\$1,023,450		\$1,023,450	\$1,045,050		\$1,045,050
	Revenue Total	\$1,732,110		\$1,732,110	\$1,710,760		\$1,710,760

The FY23 expenditures for the Medical Examiner are increasing by \$289,740, or 3.9%, over the FY22 budget. The overall budget increase is mostly related to a rise in operating expenses resulting from Professional Services. Professional Services represents the contract for services with the Medical Examiner. Within this contract, the largest increase was to payroll expenses.

- Operating Professional Services (ME contract) shows a net increase of \$469,980, or 6.9%. The increase is attributed to a rise in salary costs while total positions declined by one (or a half FTE). These positions are part of Professional Services because the employees of the Medical Examiner work directly for the ME (not

MEDICAL EXAMINER'S OFFICE

the County or the State). These increases were not part of County or State-wide standard inflationary increases.

- Machinery and equipment reflect a decrease of \$108,440, or 83.42%, resulting from the completion of the one-time planned purchase of a STRmix machine and rapid DNA equipment. This reduction is offset with the planned purchase of a UV crosslinker (\$5,560), Freezer mill (\$7,500), Autoclave (\$8,500) with grant funds.
- Facility related costs not captured within the ME cost center total \$421,110, an increase of \$72,330 from the prior year (these costs are reflected in the Administrative Services department budget).

Department/ Agency	Expenditure Account	2022			2023		
		General Fund	Non- General Fund	Total	General Fund	Non- General Fund	Total
Medical Examiner	Personal Services	\$246,690		\$246,690	\$236,570		\$236,570
	Operating Expenses	\$7,025,750		\$7,025,750	\$7,480,320		\$7,480,320
	Capital Outlay	\$188,270		\$188,270	\$33,560		\$33,560
	Expenditure Total	\$7,460,710		\$7,460,710	\$7,750,450		\$7,750,450
FTE		2.0		2.0	2.0		2.0

Budget Summary by Program and Fund

Medical Examiner

Determines the cause and manner of death according to the responsibilities and obligations in Florida Statutes 406. Performs toxicology on Medical Examiner cases, determines the concentration of alcohol and controlled substances in DUI cases, and determines the DNA profile of samples and chemical composition of items submitted by law enforcement. Additionally, two DNA Specialists are Pinellas County employees and are not included in the Medical Examiner's contract which allows the County to maintain accreditation and provides the lab with access to the National Combined DNA Index System (CODIS).

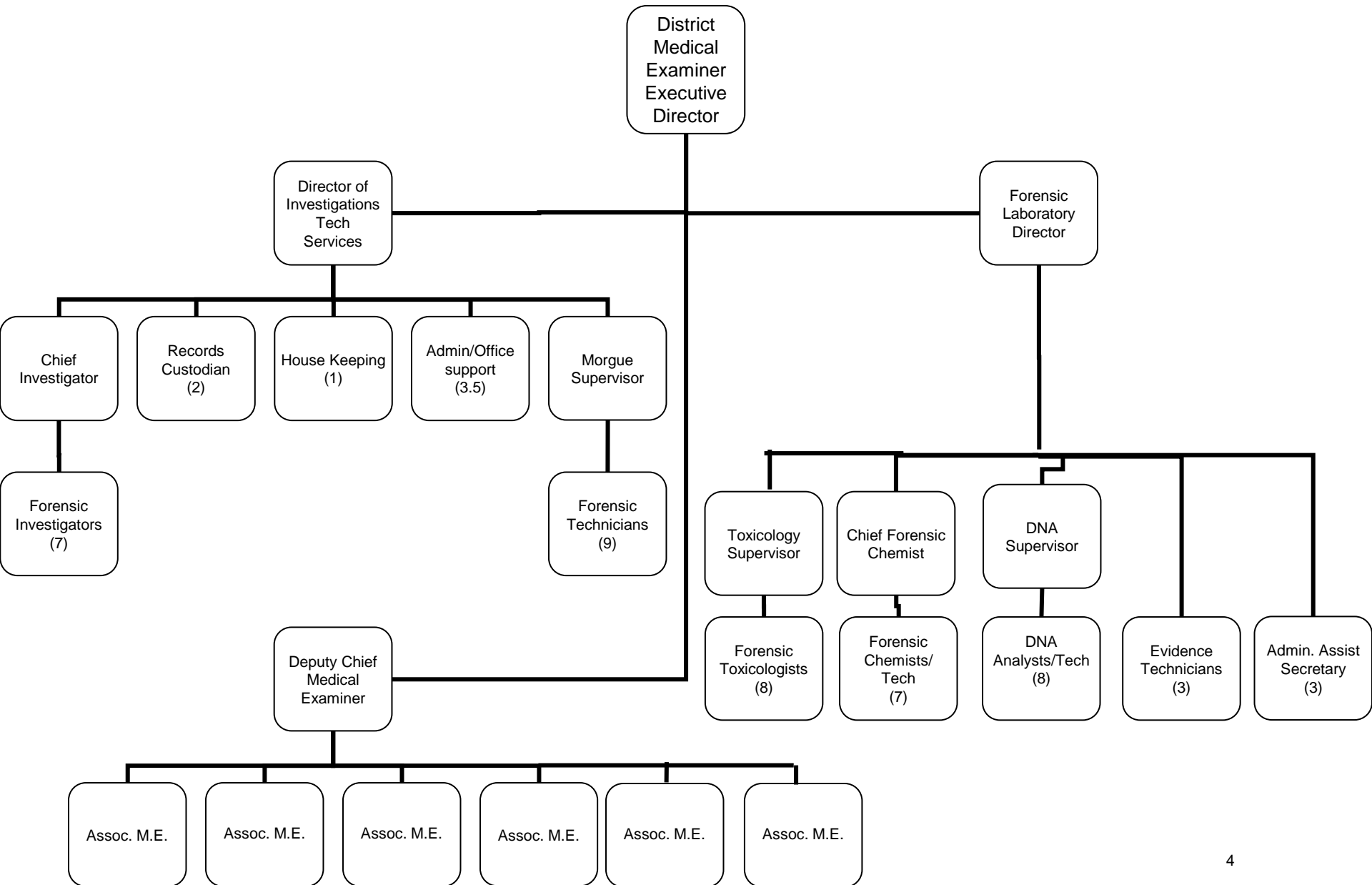
Program	Fund	FY20 Actual	FY21 Actual	FY22 Budget	FY23 Budget
6082-Medical Examiner-District Six	0001 - General Fund	\$6,719,931	\$6,885,799	7,460,710	\$7,750,450
	Total	\$6,719,931	\$6,885,799	\$7,460,710	\$7,750,450

MEDICAL EXAMINER'S OFFICE

Attachments:

1. Organizational Chart (page 4)
2. Budget Reports
 - a. Department by Accounts (page 5)
3. User Fees (page 7)

Forensic Science Center



Pinellas County
Standard Detail
Fund: 0001 - General Fund
Version: OMB Review

Revenues

Account	FY19 Actual	FY20 Actual	FY21 Actual	FY22 Budget	FY22 Estimate	FY23 Request	Budget to Budget Change	Budget to Budget % Change
3312001 - Fed Grant-Public Safety	392,718	348,784	526,443	480,660	660,660	365,710	(114,950)	-23.92%
3342001 - State Grant-Public Safety	256,132	227,359	259,645	228,000	228,000	300,000	72,000	31.58%
3429010 - ME-Crema,Disct,Burials@Sea	0	408,060	457,905	436,000	458,950	420,000	(16,000)	-3.67%
3429991 - Other Charges&Fees-PS	628,139	562,346	628,072	583,460	614,170	621,180	37,720	6.46%
3489921 - Ct Rel-No Rem-DNA Fee	0	3,513	3,938	3,990	4,020	3,870	(120)	-3.01%
Revenues Total	1,276,989	1,550,062	1,876,003	1,732,110	1,965,800	1,710,760	(21,350)	-1.23%

Expenditures

Account	FY19 Actual	FY20 Actual	FY21 Actual	FY22 Budget	FY22 Estimate	FY23 Request	Budget to Budget Change	Budget to Budget % Change
5110001 - Executive Salaries	142,610	147,326	151,179	156,870	140,730	146,930	(9,940)	-6.34%
5210001 - FICA Taxes	10,677	11,012	11,297	12,000	10,770	11,250	(750)	-6.25%
5220001 - Retirement Contributions	35,320	37,116	37,581	40,650	36,770	40,120	(530)	-1.30%
5230001 - Hlth,Life,Dntl,Std,Ltd	41,093	41,276	40,833	37,170	33,930	38,270	1,100	2.96%
5310001 - Professional Services	5,805,830	6,109,250	6,256,350	6,778,360	6,778,360	7,248,340	469,980	6.93%
5340001 - Other Contractual Svcs	0	6,000	0	12,000	12,000	43,600	31,600	263.33%
5460001 - Repair&Maintenance Svcs	0	0	19,523	0	0	150	150	100.00%
5496551 - Intgv Sv-Risk Financing	45,500	52,800	48,450	32,430	32,430	37,620	5,190	16.00%
5510001 - Office Supplies Exp	572	0	0	0	0	0	0	0.00%
5520001 - Operating Supplies Exp	126,419	94,741	21,433	0	0	0	5 0	0.00%

5520004 - Oper. Supplies-Lab	4,668	4,960	0	202,960	202,960	115,450	(87,510)	-43.12%
5520016 - MIS Supplies	52,677	0	90,471	0	0	0	0	0.00%
5520091 - Equipment purchases under \$5,000	0	0	4,116	0	0	0	0	0.00%
5520098 - PC Purchases under \$5,000	0	0	0	0	25,330	33,910	33,910	100.00%
5520099 - PC Purchases under \$1000	33,495	23,010	14,236	0	0	0	0	0.00%
5640001 - Machinery And Equipment	33,467	135,465	142,630	130,000	130,000	21,560	(108,440)	-83.42%
5640099 - PC Purchases over \$1000	4,072	0	0	25,330	0	0	(25,330)	-100.00%
5680100 - Software-Purchased	30,000	56,976	47,700	32,940	32,940	12,000	(20,940)	-63.57%
Expenditures Total	6,366,401	6,719,931	6,885,799	7,460,710	7,436,220	7,749,200	288,490	3.87%
	(5,089,412)	(5,169,869)	(5,009,796)	(5,728,600)	(5,470,420)	(6,038,440)	(309,840)	-5.41%

Human Services	FY22 Adopted	FY23 Proposed
I. Adult Use License		
I-A. Consumer Protection Annual Fee	\$1,116.00	\$1,116.00
I-A. Health Department Fee	\$184.00	\$184.00
I-A. Sheriff Fee	\$300.00	\$300.00
I-A. Application Fee*	\$100.00	\$100.00
I-A. Total License Fee	\$1,700.00	\$1,700.00
I-B. Background Check	\$30.00 Each	\$30.00 Each
,		
* The \$100 application fee is non-refundable but creditable to the license fee.		
,		
II. Bingo Licenses		
II-A. Class A License		
II-A. Consumer Protection Annual Fee	\$275.00	\$275.00
II-A. Application Fee*	\$50.00	\$50.00
II-A. Total License Fee	\$325.00	\$325.00
II-B. Class B License		
II-B. Consumer Protection Annual Fee	\$275.00	\$275.00
II-B. Application Fee*	\$50.00	\$50.00
II-B. Total License Fee	\$325.00	\$325.00
II-C. Background Check	\$30.00 Each	\$30.00 Each
,		
* The \$50 application fee is non-refundable but creditable to the license fee.		
,		
III. High Prescribing Health Clinics		
III-A. Application Fee*	\$250.00	\$250.00
III-B. Annual Permit Fee	\$1,500.00	\$1,500.00
(A permit rate reduction of \$250 is available per Ord. No. 11- 44)		
,		
* The \$250.00 application fee is non-refundable.		
,		
IV. Medical Examiner Services - Approval of Cremations, Dissections, and Burials at Sea	\$40.00 Each	\$40.00 Each
,		

Human Services	FY22 Adopted	FY23 Adopted
V. Medical Examiner Cost Recovery for Laboratory Services (Forensic laboratory investigative services reimbursement related to a conviction) ,	Varies	Varies
VI. Electronic Service Fees (Consumer Protection) VI. - A. Electronic Check* ,	Flat Fee \$1.50 per transaction	Flat Fee \$1.50 per transaction
* Fee will take effect with the implementation of Accela.		