

# Tax Collector

Charles Thomas – Pinellas County Tax Collector

<https://taxcollect.com/>

## Department Purpose

The Tax Collector bills, collects, and distributes all taxes for the County, municipalities, Tourist Development Council, School Board, and taxing districts. The Tax Collector issues licenses and titles for cars, trucks, boats, and mobile homes; issues fishing and hunting licenses; processes applications for Concealed Weapons Licenses; issues Drivers Licenses and Birth Certificates; and takes application for voter ID cards. This budget reflects the funds associated with the Tax Collector fees related to the collection of the Countywide and Unincorporated area (MSTU) millage. The Tax Collector is elected by the citizens of Pinellas County every four years.

## **Commissions**

In accordance with Florida Statute 192.091, the fees associated with the School Board and municipalities are paid for by the County and are included in the appropriations shown below. The amount the Board must budget as fees and commissions for the Tax Collector is set by statutory formula. In general, the formula calls for fees of 3.0% on taxes collected up to an assessed valuation of \$50.0M, and 2.0% on the balance above \$50.0M. The Tax Collector's total budget request is approved by the Florida Department of Revenue (not the Board of County Commissioners). Statutory fees and commissions shown below reflect those in the General Fund only. Those fees of other property tax levying funds (Emergency Medical Service, Fire Districts, etc.) are shown separately within their fund budgets. Statutory fees and commissions not expended by the Tax Collector are returned proportionately to the taxing authorities and are often referred to as excess fees.

## Budget Summary

Total fee transfers are expected to increase \$3.3M (11.8%) to \$31.3M. The fees will be used to support the Tax Collector's operating budget totaling \$32.3M, an increase of \$2.1M (6.9%) above the FY22 Adopted Budget. Total FTE remains at 285. The return of un-used commissions is expected to increase \$821,520 (9.6%) to \$9.4M. These figures are based on a projected 12.1% increase in taxable value in Pinellas County. These figures will be adjusted when the July 1<sup>st</sup> taxable values are released by the Property Appraiser.

## **Tax Collector**

Expenditure Account	2022			2023		
	General Fund	Non-General Fund	Total	General Fund	Non-General Fund	Total
Constitutional Officers Transfers	\$24,428,410	\$3,525,660	\$27,954,070	\$27,337,780	\$3,917,550	\$31,255,330
<b>Expenditure Total</b>	<b>\$24,428,410</b>	<b>\$3,525,660</b>	<b>\$27,954,070</b>	<b>\$27,337,780</b>	<b>\$3,917,550</b>	<b>\$31,255,330</b>

Revenue Account	2022			2023		
	General Fund	Non- General Fund	Total	General Fund	Non- General Fund	Total
Excess Fees - Constitutional Officers	\$8,558,430		\$8,558,430	\$9,379,950		\$9,379,950
<b>Revenue Total</b>	<b>\$8,558,430</b>		<b>\$8,558,430</b>	<b>\$9,379,950</b>		<b>\$9,379,950</b>

# Tax Collector

## Budget Summary by Program and Fund

### Tax Collector Program

Collects, bills, and distributes all taxes for the County, municipalities, Tourist Development Council, School Board, and taxing districts, including the sales tax on vehicles, vessels, and mobile homes. Collects delinquent taxes and sells certificates for unpaid taxes. As the agent for state government, the Tax Collector issues licenses and titles for cars, trucks, boats, and mobile homes; collects fees for fishing and hunting licenses; issues Driver Licenses and Birth Certificates; processes applications for Concealed Weapons Licenses; and takes applications for voter identification cards.

Program	Fund	FY20 Actual	FY21 Actual	FY22 Budget	FY23 Budget
9880-Tax Collector Program	0001 - General Fund	\$21,356,478	\$22,556,284	24,428,410	\$27,337,780
	<b>Total</b>	<b>\$21,356,478</b>	<b>\$22,556,284</b>	<b>\$24,428,410</b>	<b>\$27,337,780</b>

## Performance Measures

Performance Measure	Unit of Measure	FY20 Actual	FY21 Actual	FY22 Budget	FY23 Budget
Current Year Taxes: Tax Bills Processed	Count	413,351	403,615	413,400	413,500
Current Year Taxes: Installment Accounts	Count	14,435	14,764	15,045	15,555
Current Year Taxes: Deferred accounts	Count	8	9	10	10
Delinquent Taxes: Real Estate Tax Certificates Sold	Count	12,493	9,955	12,500	12,500
Delinquent Taxes: Personal Property Tax Warrants Issued	Count	958	752	850	850
Delinquent Taxes: Partial Payments	Count	113	67	115	115
Vehicle and vessel registrations	Count	1,664,423	1,748,131	1,750,000	1,300,000
Vehicle titles processed	Count	522,994	540,584	600,000	500,000
Handicapped Parking Permits Issued	Count	27,027	22,534	34,000	24,028
Sport licenses issued	Count	1,727	1,633	3,000	1,630
Tourist Tax Accounts	Count	2,814	2,568	2,700	2,600
Bankruptcies	Count	56	41	65	65
Driver's Licenses and Identifications	Count	151,658	259,191	220,000	252,376
Walk in customers	Count	652,083	384,689	1,003,700	483,700
Telephone calls received	Count	587,531	521,775	460,000	450,484
Concealed weapon licenses Issued	Count	6,505	15,600	7,000	12,800
Birth certificates Issued	Count	1,425	3,636	3,100	2,894

### Attachments:

1. Organizational Chart (pgs. 3 – 4)
2. Budget Reports (pgs. 5 – 6)

BOX TYPES

Tax Collector

Executive Assistant

Chief Deputy Tax Collec



**Charles Thomas**  
County Tax Collector

11/27/00



**Toni May**  
Tax Col Exec Asst

12/05/11  
TC/E39



**James Battanyai**  
Chf Dep Tax Col

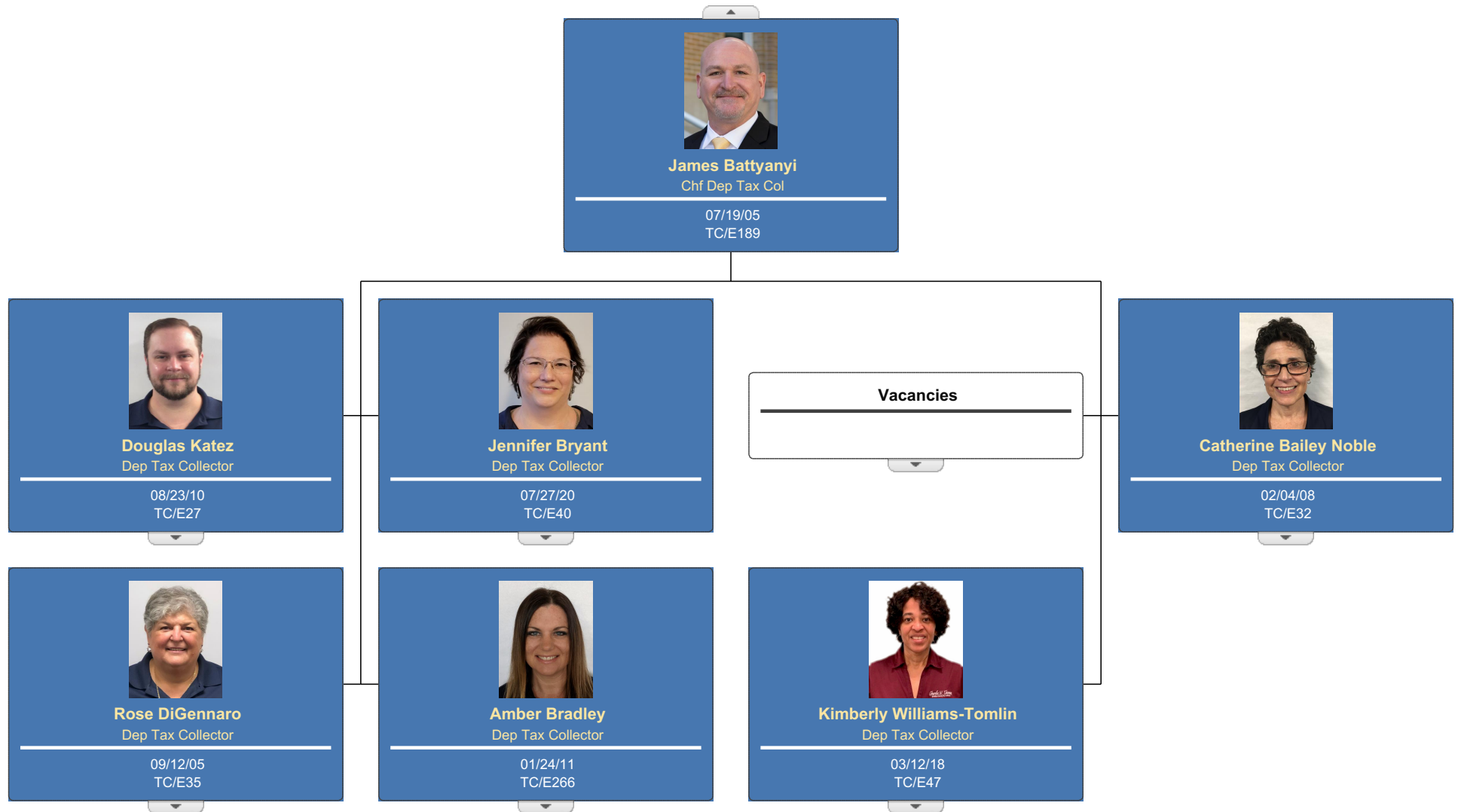
07/19/05  
TC/E189

BOX TYPES

Chief Deputy Tax Collec

Deputy Tax Collector

Blank



## Tax Collector

Expenditures	FY19 Actual	FY20 Actual	FY21 Actual	3-year Average	FY22 Budget	FY22 Estimate	FY23 Request	Budget to Budget Change	Budget to Budget % Change
5919980 - Trans To Tax Collector	19,371,309	20,544,495	21,710,999	20,542,268	23,502,530	23,502,530	26,315,820	2,813,290	12.0%
5919982 - Trans To Tax Coll-Mstu	749,616	811,983	845,285	802,294	925,880	925,880	1,021,960	96,080	10.4%
Expenditures Total	20,120,925	21,356,478	22,556,284	21,344,562	24,428,410	24,428,410	27,337,780	2,909,370	11.9%

## Tax Collector

Revenue	FY19 Actual	FY20 Actual	FY21 Actual	3-year Average	FY22 Budget	FY22 Estimate	FY23 Request	Budget to Budget Change	Budget to Budget % Change
3415101 - Cnty Off Fees-Tax Coll	9,408,077	9,046,353	8,551,166	9,001,865	8,320,190	12,128,355	9,112,810	792,620	9.53%
3415102 - Cnty Off Fees-TC-MSTU	245,796	249,962	244,228	246,662	238,240	403,285	267,140	28,900	12.13%
Expenditures Total	9,653,873	9,296,315	8,795,395	9,248,528	8,558,430	12,531,640	9,379,950	821,520	9.60%