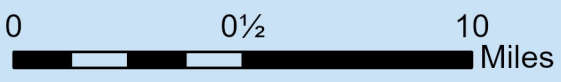


SUBJECT AREA

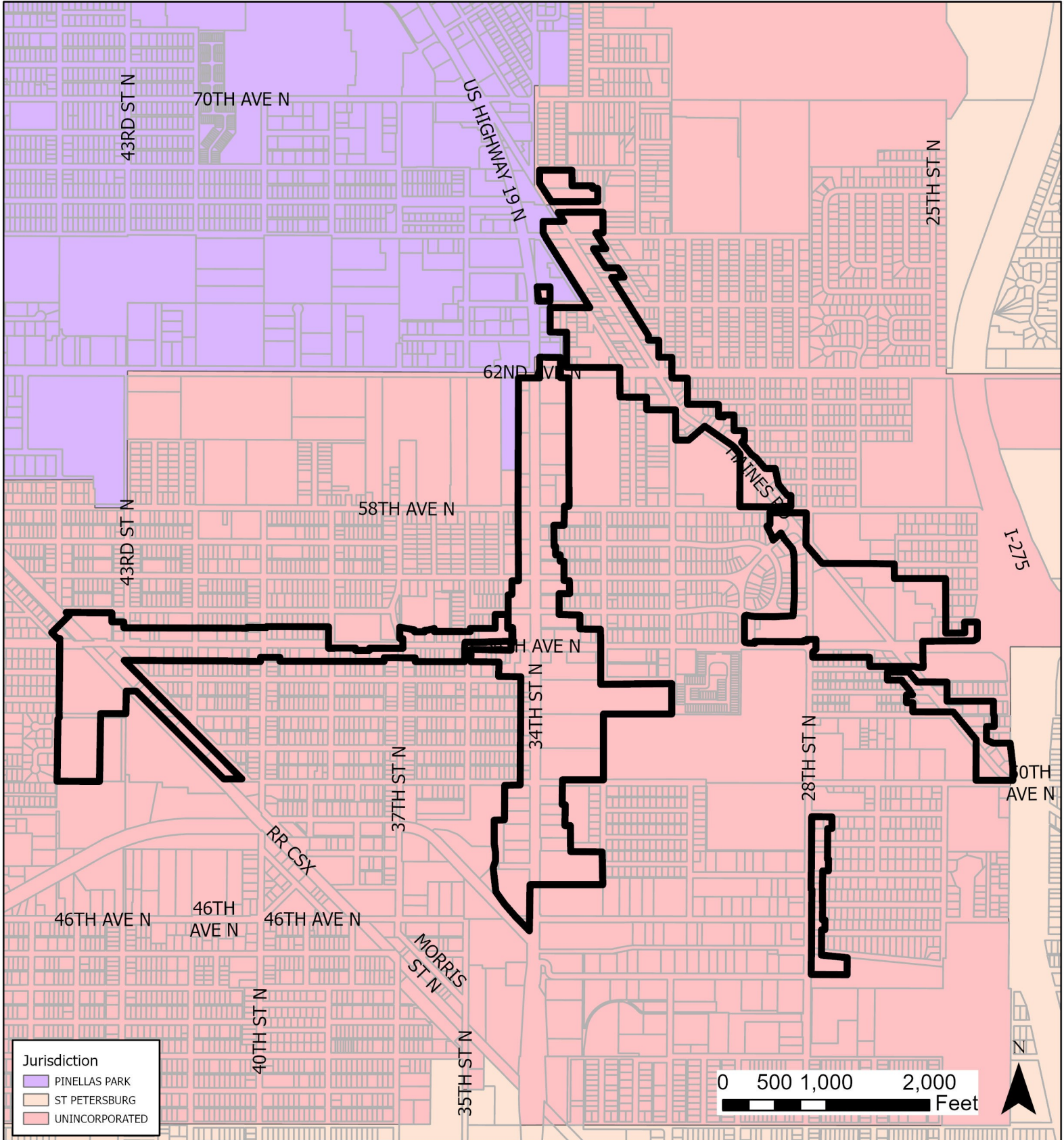


County of Pinellas, FDEP, Esri, HERE, Garmin, SafeGraph, FAO, METI/NASA, USGS, EPA, NPS

301

Case CW23-10

Map 2: Jurisdictional Map



JURISDICTION: Pinellas County

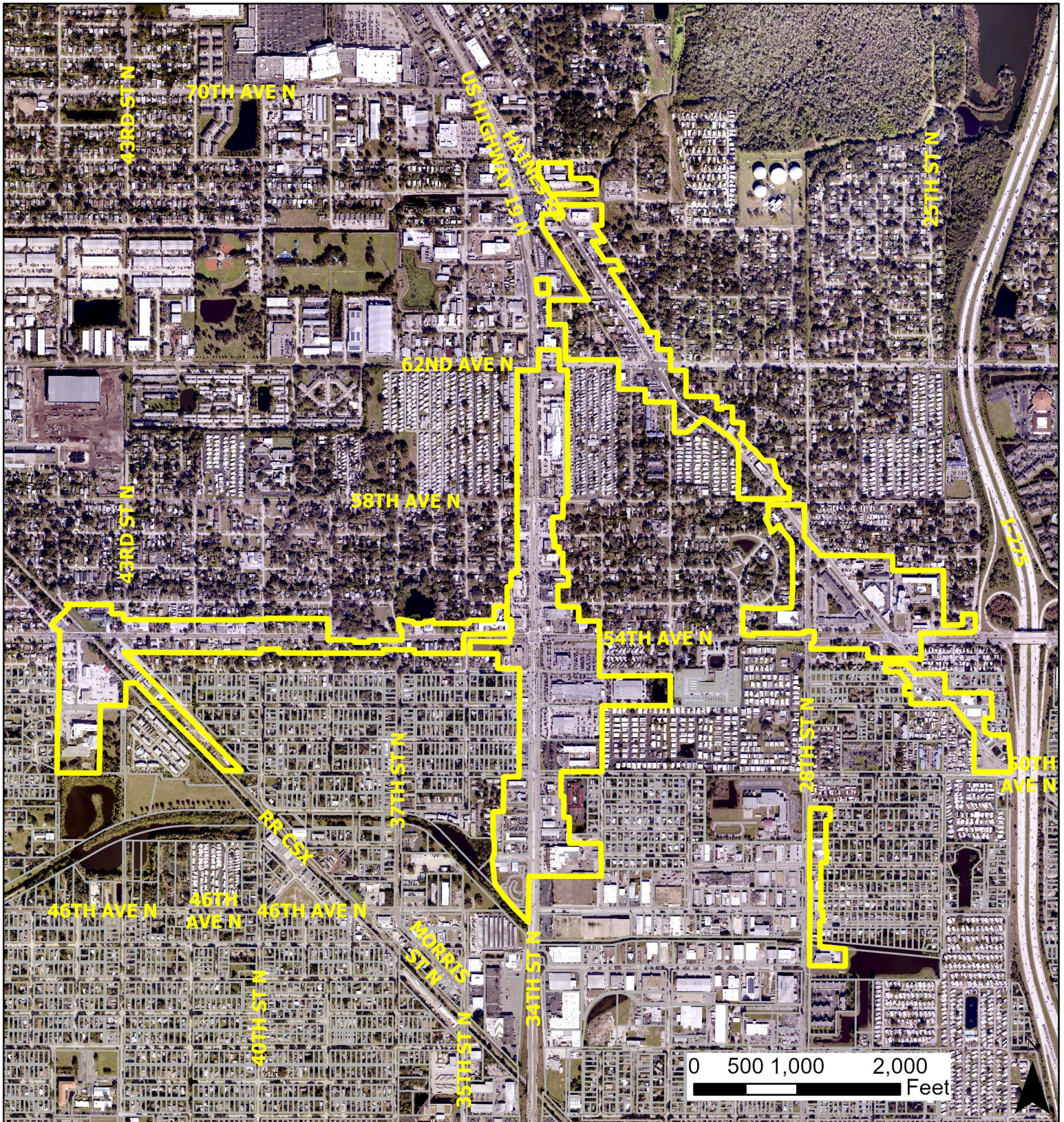
AREA: 171.6 acres m.o.l.

FROM: Residential Low Medium, Residential Medium, Office, Public/Semi-Public, Retail & Services, Employment, and Target Employment Center

TO: Multimodal Corridor and Target Employment Center

Case CW23-10

Map 3: Aerial Map



JURISDICTION: Pinellas County

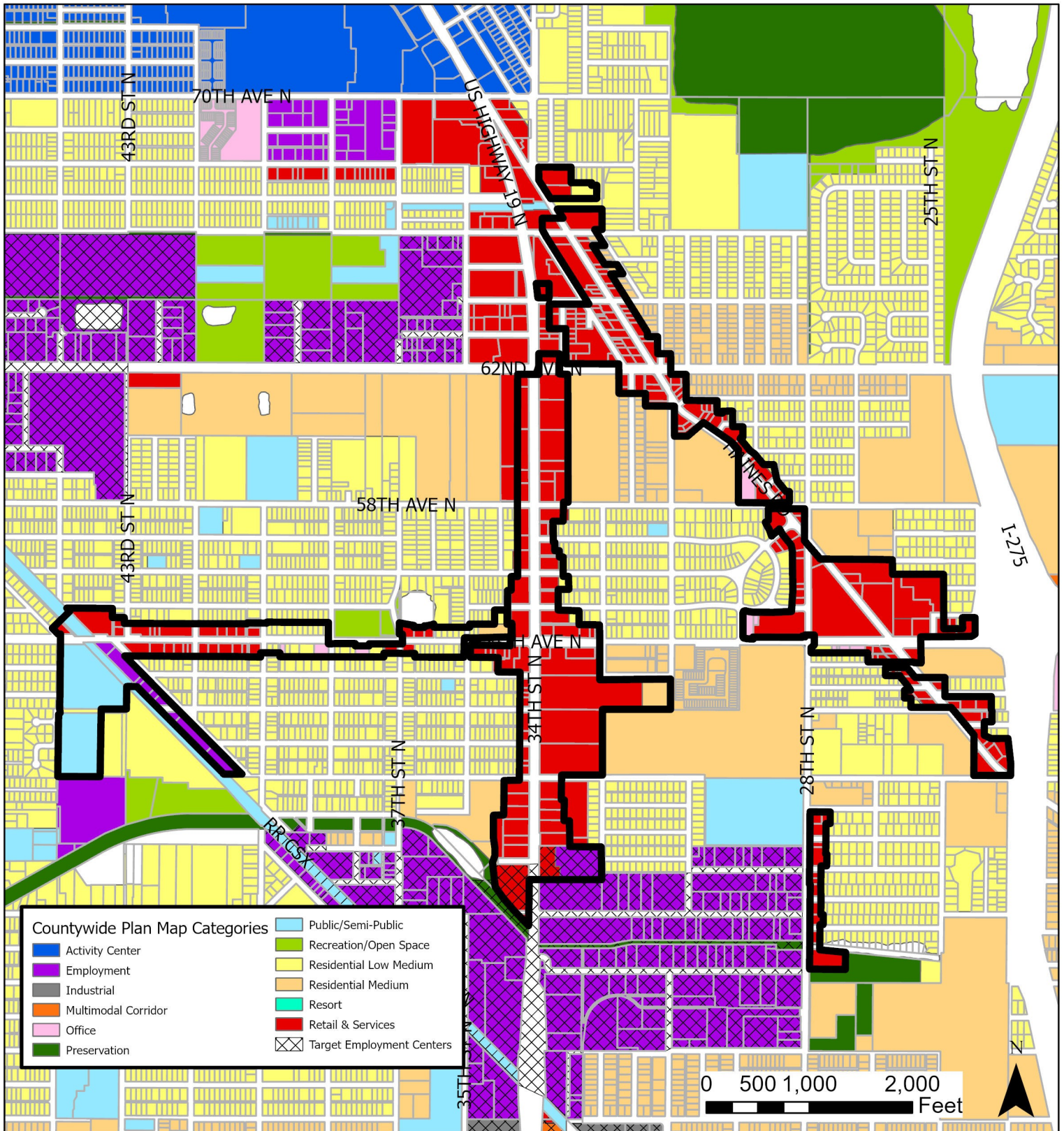
AREA: 171.6 acres m.o.l.

FROM: Residential Low Medium, Residential Medium, Office, Public/Semi-Public, Retail & Services, Employment, and Target Employment Center

TO: Multimodal Corridor and Target Employment Center

Case CW23-10

Map 4: Current Countywide Plan Map

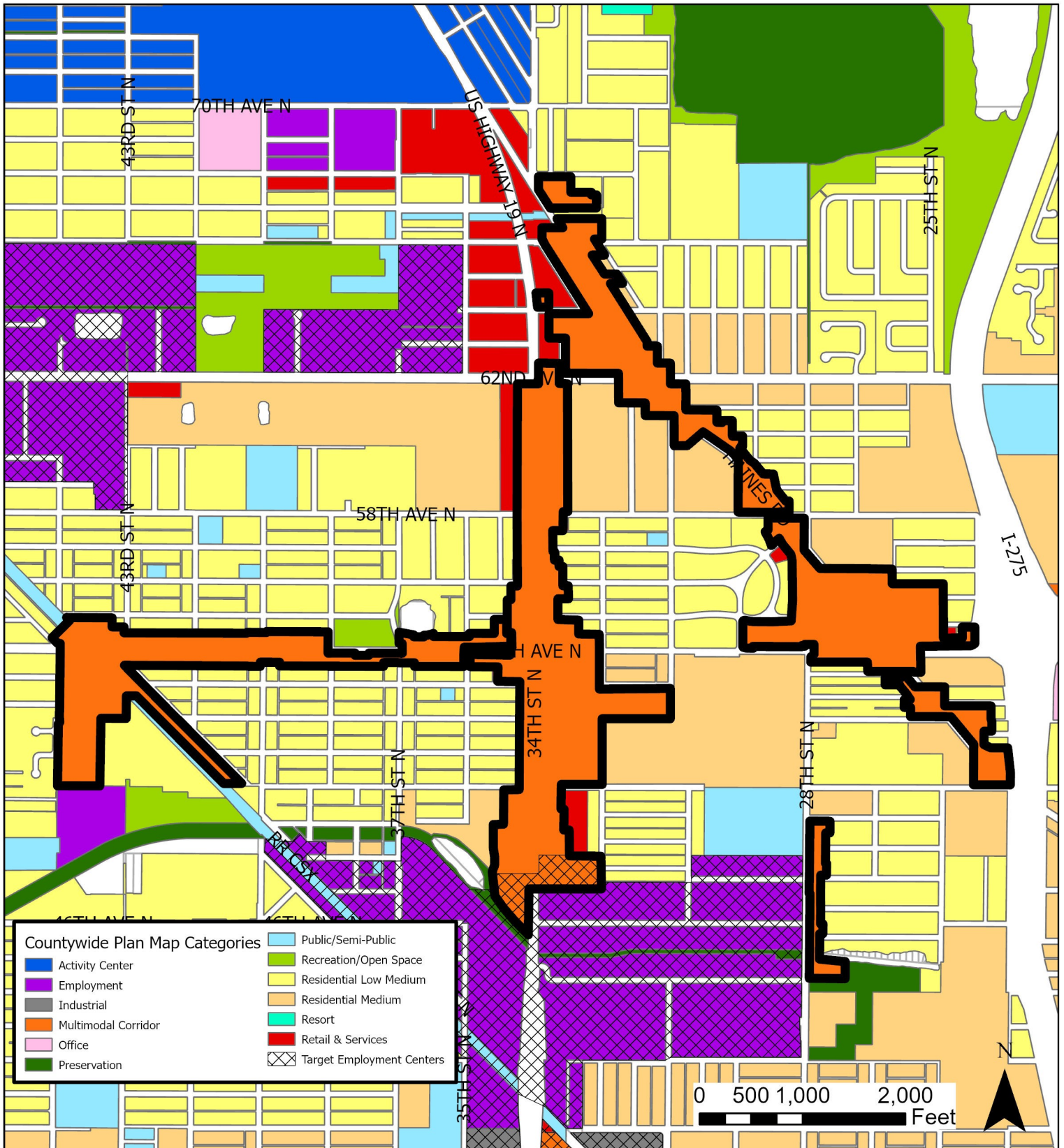


JURISDICTION: Pinellas County

AREA: 171.6 acres m.o.l.

FROM: Residential Low Medium, Residential Medium, Office, Public/Semi-Public, Retail & Services, Employment, and Target Employment Center

TO: Multimodal Corridor and Target Employment Center



JURISDICTION: Pinellas County

AREA: 171.6 acres m.o.l.

FROM: Residential Low Medium, Residential Medium, Office, Public/Semi-Public, Retail & Services, Employment, and Target Employment Center

TO: Multimodal Corridor and Target Employment Center