

Pinellas County Youth Advisory Committee



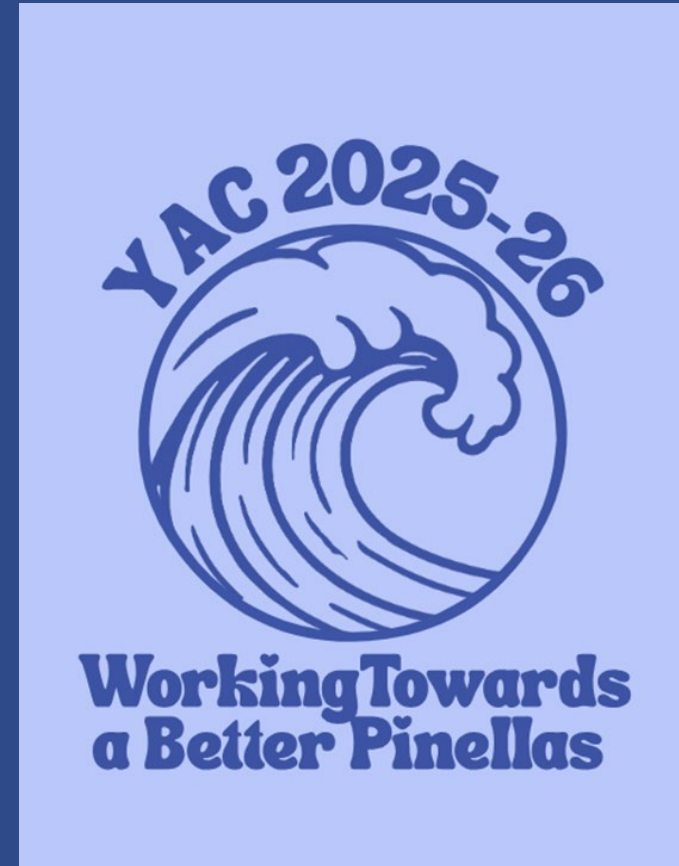
Muskan Parmar
Chair



Daniel Krempp
Vice Chair



Karina Grishchenko
Secretary



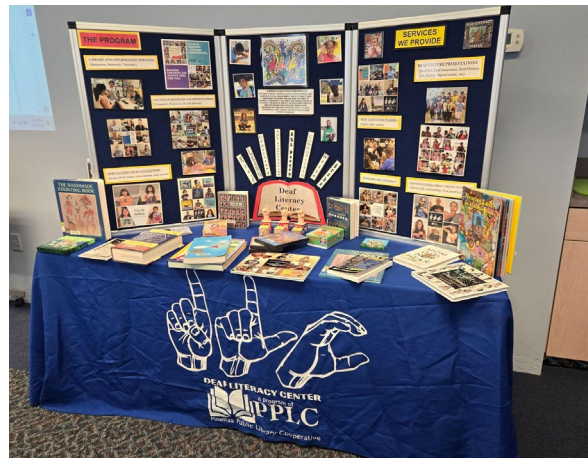
Typical YAC Meeting

- ❖ YAC meetings went through an agenda that accomplished the needs of the committee for that month.
- ❖ The meetings run by the leadership council often contained and went over the following:
 - ❖ Old business that needed to be followed up on or actions needed to be taken between meetings
 - ❖ New business to take care of or goals we hoped to accomplish
 - ❖ Typically ended with a group discussion on what could possibly be done in the future



We had 38 original members and an average attendance of 25 members throughout the year.

A Look at Our Tours



- ❖ St. Petersburg-Clearwater Airport
- ❖ Waste to Energy Facility
- ❖ Pinellas Public Library Cooperative (PPLC)
- ❖ Junior Welfare Board
- ❖ Pinellas County Jail

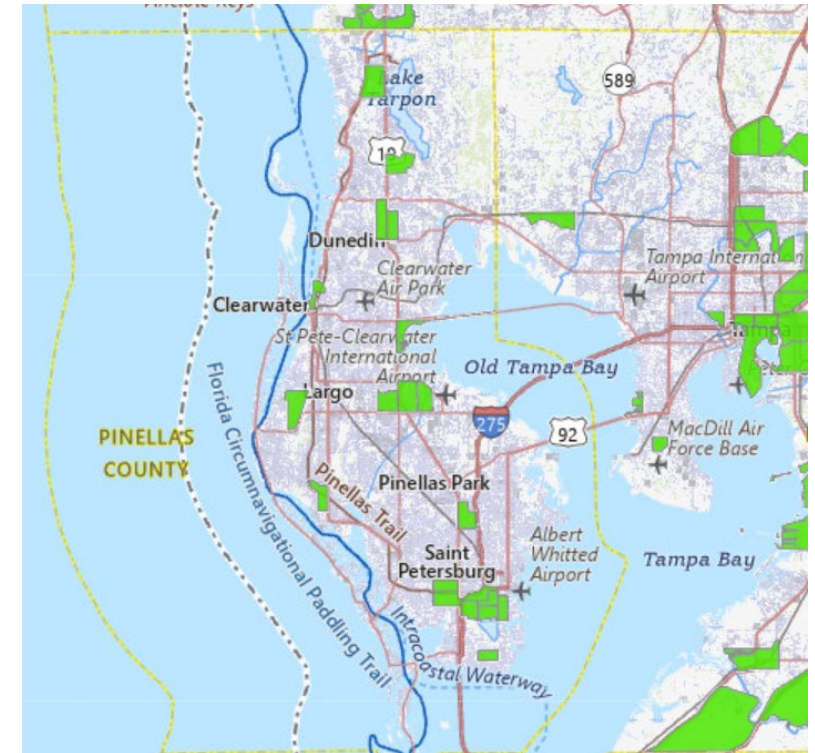
YAC's Long Term Project



- ❖ This year, YAC's long term project was to form subcommittees that explore an issue in Pinellas County and search for a solution either through a presentation, or an active, hands-on project.
- ❖ We decided on long-term projects with group discussions
- ❖ Food Insecurity: Madison Seiter
- ❖ Youth Literacy: Shayna Graff
- ❖ End-of-the-Year YAC Celebration: Emma Carpenter

Food Insecurity

- ❖ 150000+ people in Pinellas County struggle with food insecurity (13%)
- ❖ 21% live in food deserts
- ❖ Many families are left not knowing where their next meal will come from
- ❖ 1 in 10 residents experience this regularly
- ❖ 1 in 8 children in the area face hunger
- ❖ 11.5% of residents are below the poverty line



USDA, Economic Research Service. *Food Access Research Atlas*. Retrieved May 6, 2026, from <https://www.ers.usda.gov/data-products/food-access-research-atlas/>

Food Insecurity - Ideas Moving Forward



- ❖ Collect donations and create care packages throughout the year so that it is ready in advance of need
- ❖ Making resource lists accessible in more locations
 - posting resources at schools
 - 211 resource campaign
- ❖ Expand collections to include more than just non-perishable food items
 - cleaning supplies
 - hygiene items
 - fresh foods
 - school supplies
 - shoes & clothing

“Approximately 40% of students across the nation cannot read at a basic level.”

-National Literacy Institute 2024

❖ Elisa Nelson Elementary Exploration Night

❖ +70 Worksheets Completed

❖ Around 100 Actively Engaged Students

NAME: _____

"Let's Learn About Body Parts!"

Instructions: Fill in the blanks using the following words:

heart liver stomach intestines
brain lungs

1. We use the _____ to pump blood throughout the body.
2. The _____ controls thinking, memory, and body movements.
3. Food is first digested in the _____.
4. After digestion, food moves to the _____.
5. The _____ help us breathe.
6. The _____ filters waste and produces bile.
7. The _____ sends messages to the body through nerves.
8. The _____ sends messages to the body through nerves.
9. The _____ works closely with the lungs to allow oxygen flowing in the blood.
10. The _____ breaks down large pieces of food using acid.


Name: _____

Reading Comprehension

Read the short passage and answer the questions.

Walrus

The walrus has long tusks.
It lives near the Arctic Ocean.
It likes to rest on the ice.



© Created by HoneyBee

1. What does the walrus have?
 Short legs Long tusks
2. Where does it live?
 Near the Arctic Ocean In the jungle
3. Where does it rest?
 On the ice On sand

Youth Literacy - Ideas Moving Forward

- ❖ Have High School students volunteer to provide extra tutoring or practicing for younger readers with learning difficulties
- ❖ Replicate activities like Exploration Night in other schools
- ❖ Expand support and connections with organizations like JWB and PPLC



End of the Year Celebration



- ❖ Created an online survey to determine the activity and date
- ❖ April 26th | 11:00am-1:00pm | Sand Key Park
- ❖ Activity: Beach Cleanup & Pizza Lunch

Looking Forward

- ❖ YAC looks ahead to continue influencing the youth population in this county
- ❖ YAC is a resourceful opportunity dedicated to educating the future of Pinellas County
- ❖ YAC seeks to better the county by exploring different struggles within the community and taking action with active subcommittees
- ❖ Moving forward, YAC would like to focus more on having members actively work in different areas of the community

YAC would like to thank Commissioner Latvala, Commissioner Nowicki, Tyler, Jeff, JP, Leslie, Emily, and all other County Commissioners for their support and everything they do.

THANK YOU!