

ZON-26-03

Location Map

Zoning

From: R-A, Residential Agriculture

To: LI-CO, Limited Institutional with Conditional Overlay



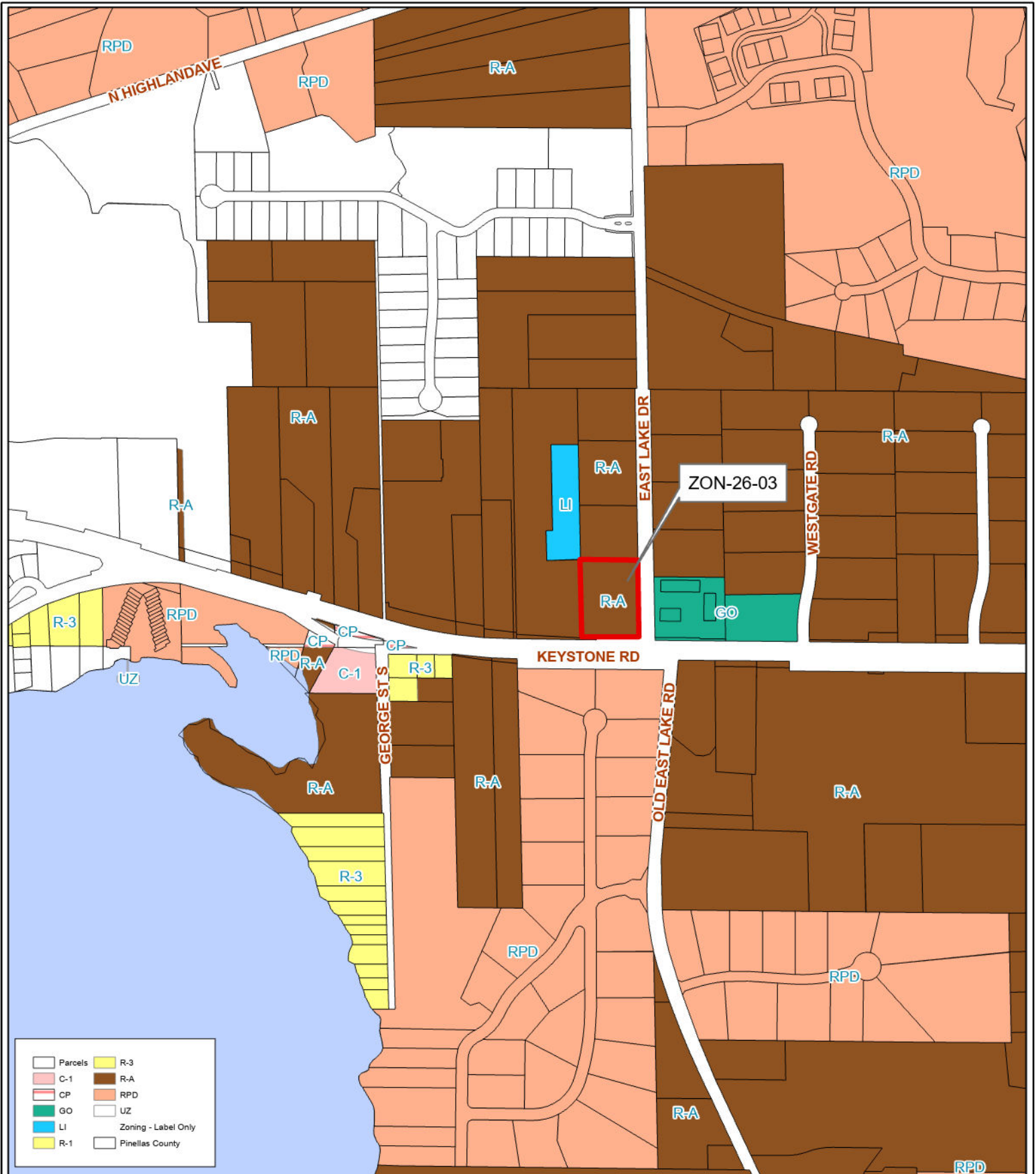
09/27/16/00000/230/0600

Prepared by: Housing & Community Development Department



Date: 3/26/2026

1:285,000



Parcels	R-3
C-1	R-A
CP	RPD
GO	UZ
LI	Zoning - Label Only
R-1	Pinellas County

ZON-26-03

Current Zoning

Zoning

From: R-A, Residential Agriculture

To: LI-CO, Limited Institutional with Conditional Overlay



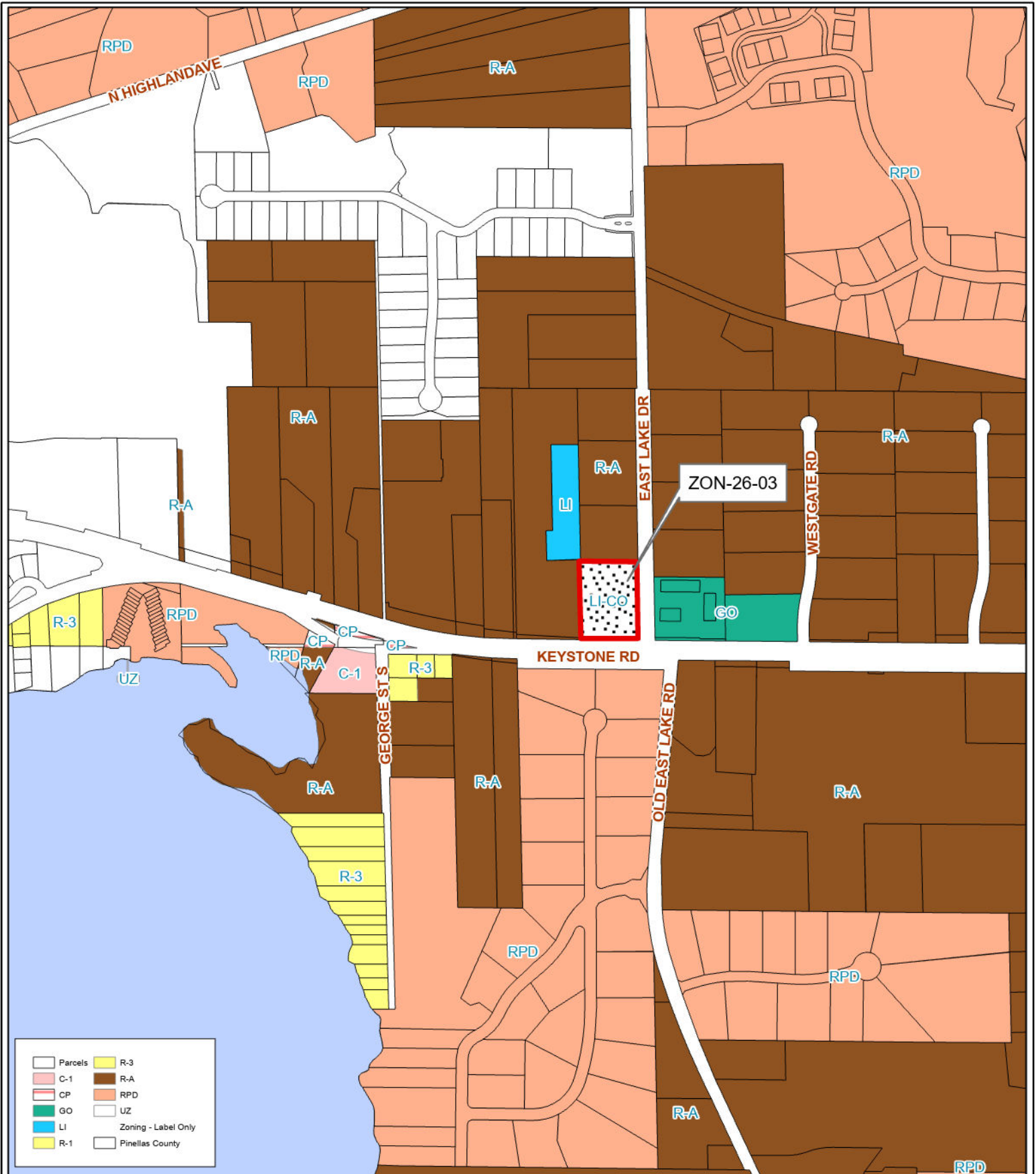
09/27/16/00000/230/0600

Prepared by: Housing & Community Development Department



Date: 3/26/2026

1:7,875



	Parcels		R-3
	C-1		R-A
	CP		RPD
	GO		UZ
	LI		Zoning - Label Only
	R-1		Pinellas County

ZON-26-03

Proposed Zoning

Zoning

From: R-A, Residential Agriculture

To: LI-CO, Limited Institutional with Conditional Overlay



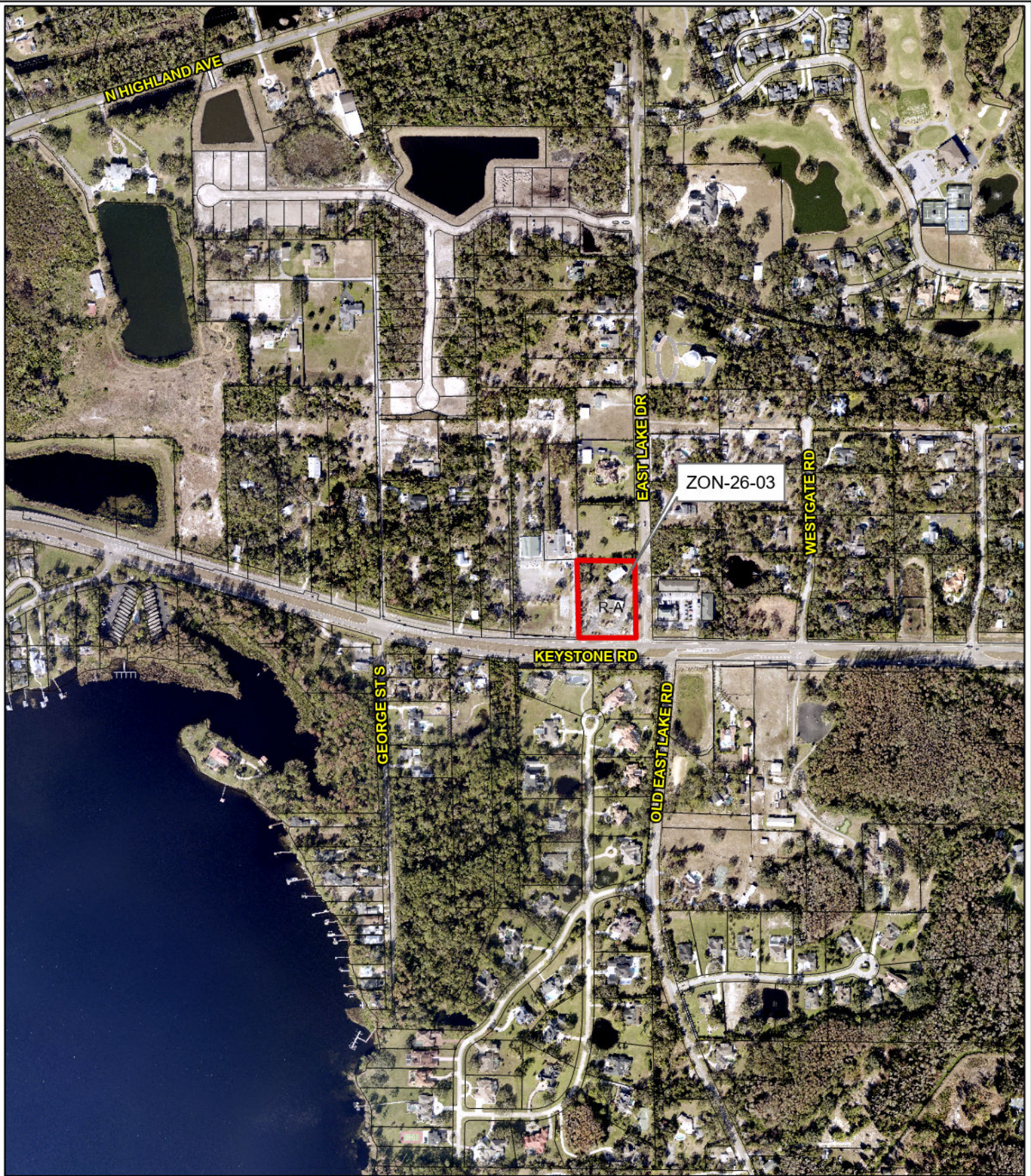
09/27/16/00000/230/0600

Prepared by: Housing & Community Development Department



Date: 3/26/2026

1:7,875



ZON-26-03

Aerial Map

Zoning

From: R-A, Residential Agriculture

To: LI-CO, Limited Institutional with Conditional Overlay



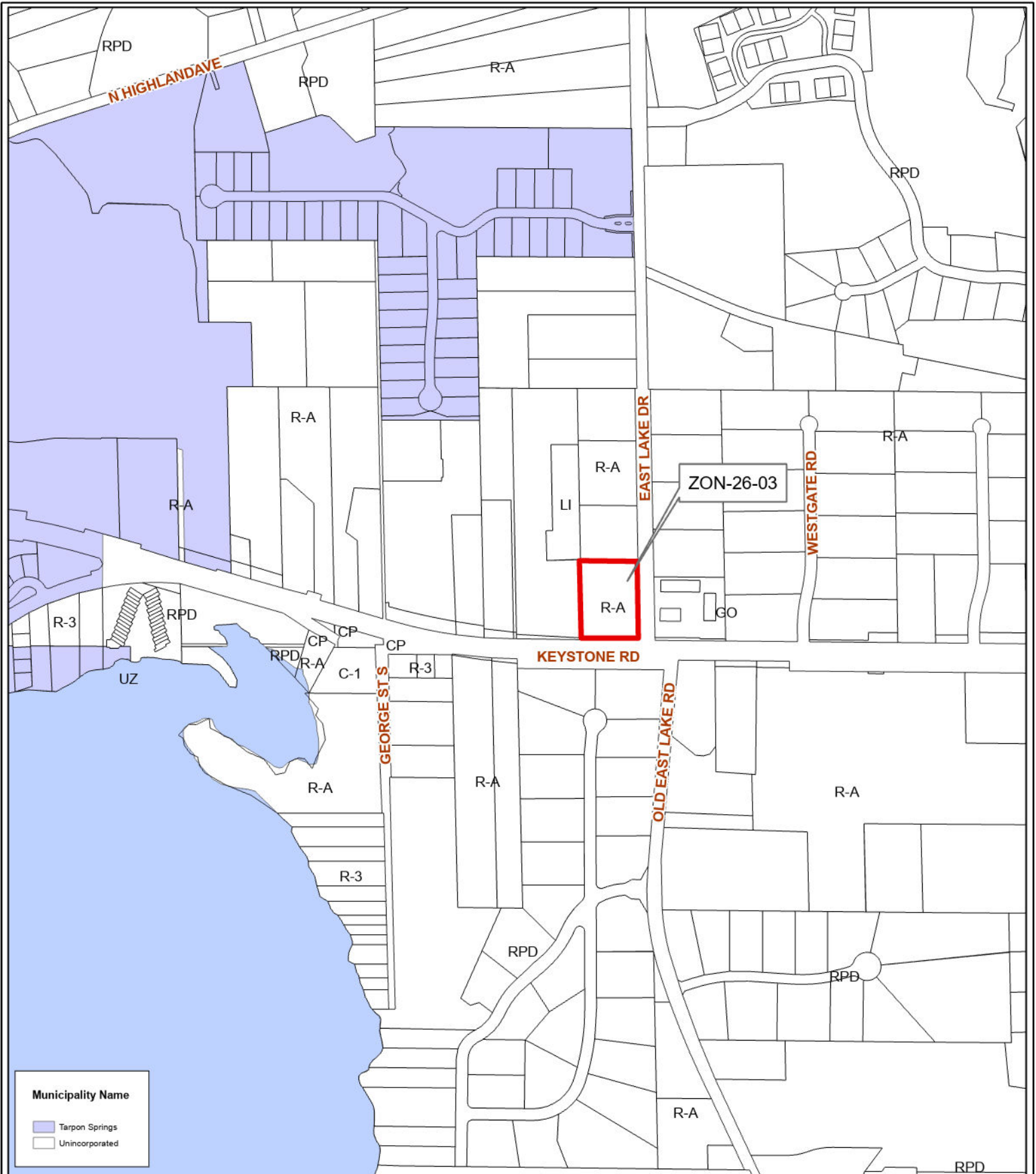
09/27/16/00000/230/0600

Prepared by: Housing & Community Development Department



Date: 3/26/2026

1:7,875



ZON-26-03

Municipal Map

Zoning

From: R-A, Residential Agriculture

To: LI-CO, Limited Institutional with Conditional Overlay



09/27/16/00000/230/0600

Prepared by: Housing & Community Development Department



Date: 3/26/2026

1:7,875