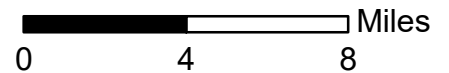


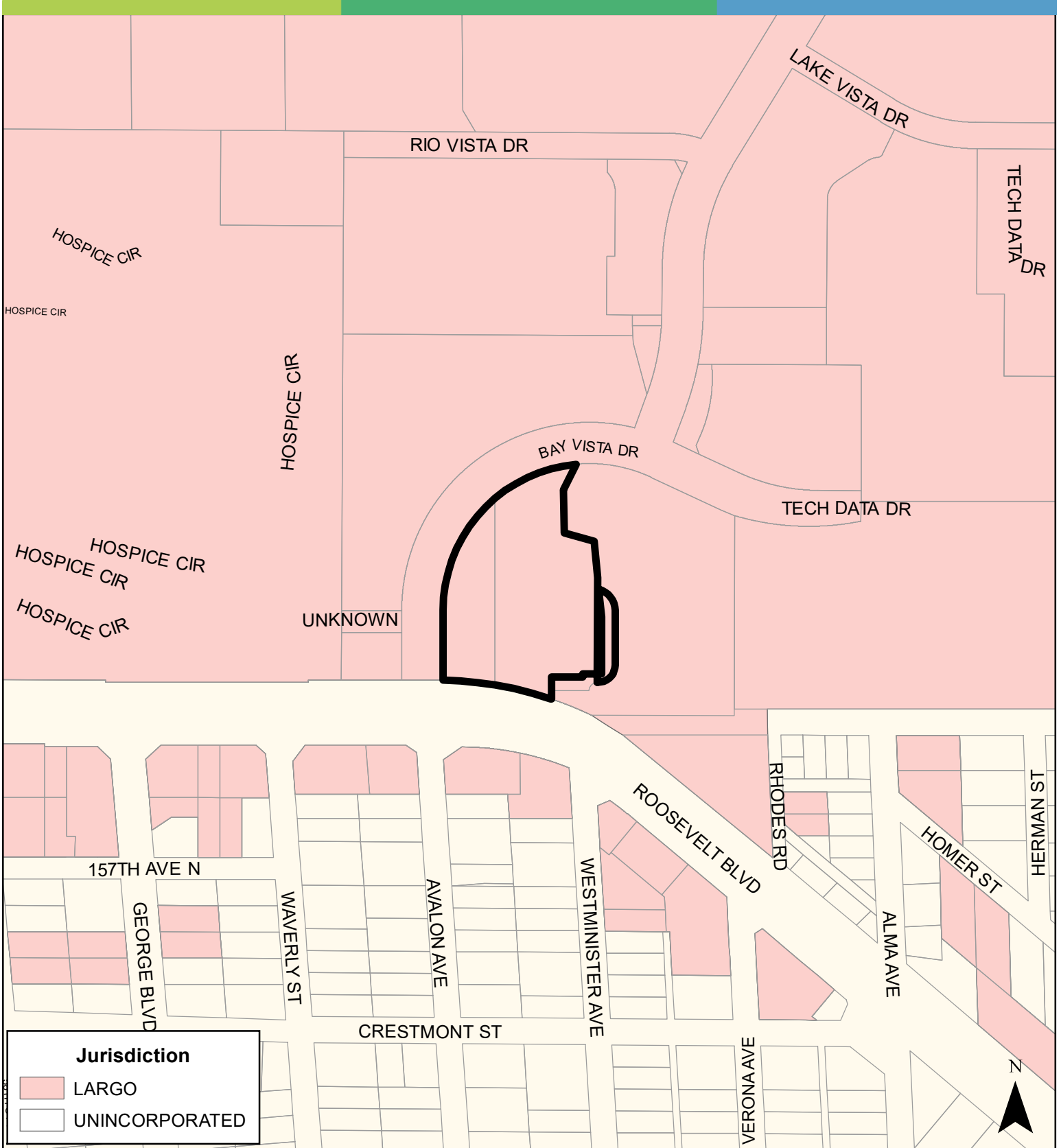
**JURISDICTION:** Largo

**AREA:** 3.3 Acres

**FROM:** Office, Retail & Services,  
and Target Employment Center

**TO:** Retail & Services and  
Target Employment Center



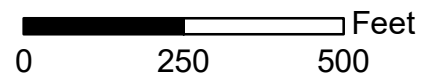


**JURISDICTION:** Largo

**AREA:** 3.3 Acres

**FROM:** Office, Retail & Services,  
and Target Employment Center

**TO:** Retail & Services and  
Target Employment Center



# Case CW19-22

## Map 3: Aerial Map

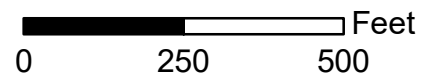


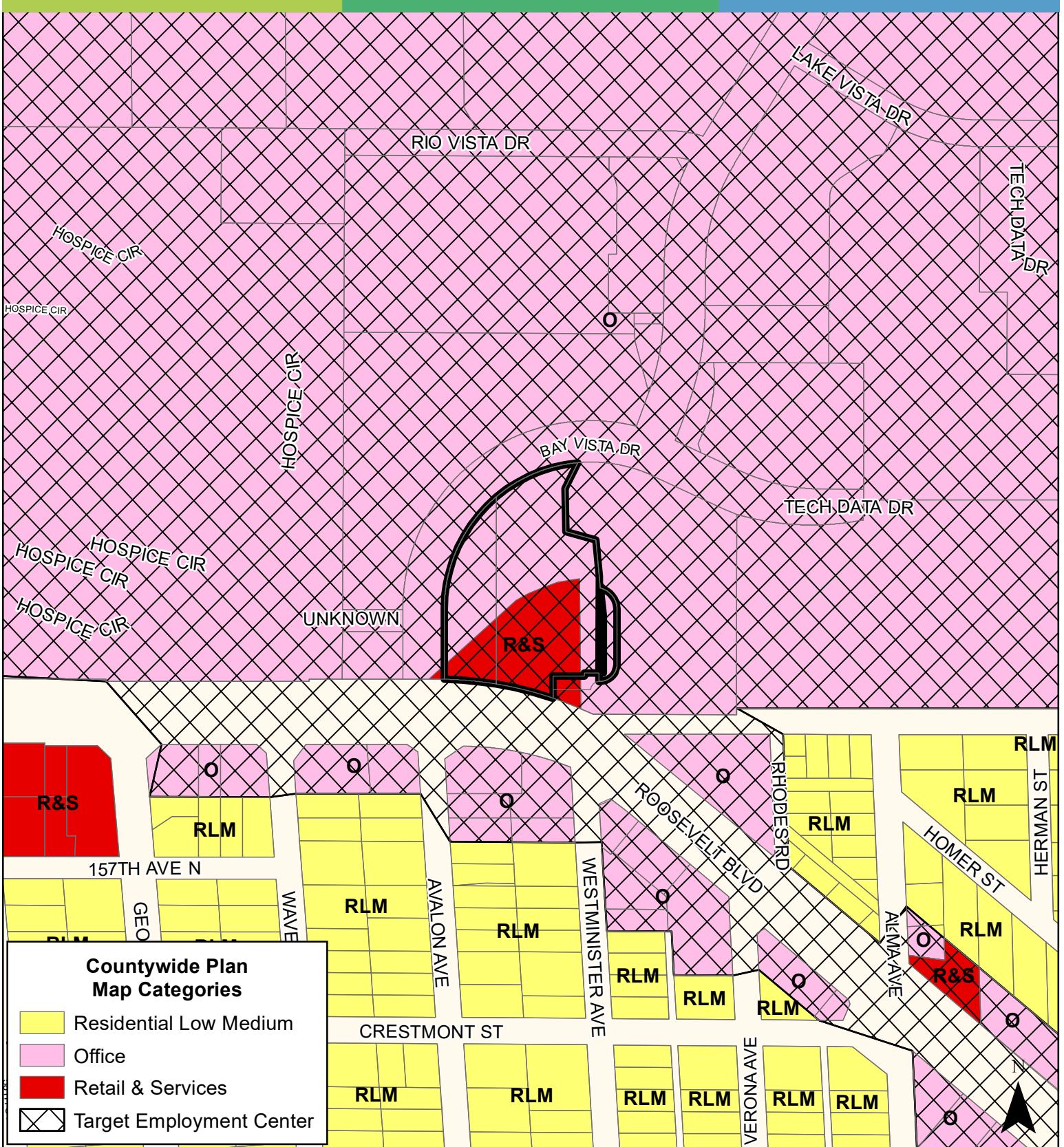
**JURISDICTION:** Largo

**AREA:** 3.3 Acres

**FROM:** Office, Retail & Services,  
and Target Employment Center

**TO:** Retail & Services and  
Target Employment Center

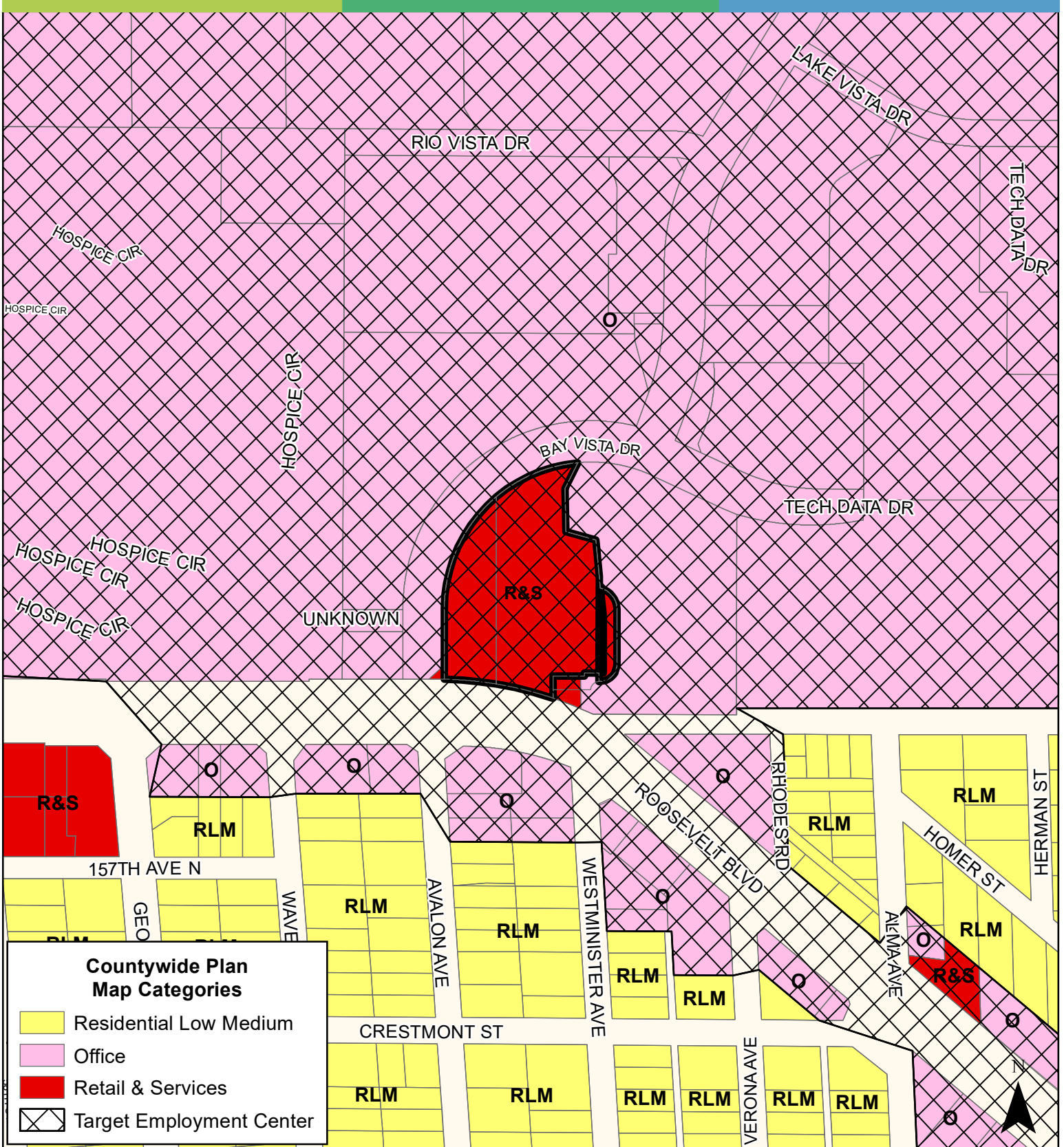




**Countywide Plan Map Categories**

- Residential Low Medium
- Office
- Retail & Services
- Target Employment Center

<b>JURISDICTION:</b> Largo	<b>FROM:</b> Office, Retail & Services, and Target Employment Center	
<b>AREA:</b> 3.3 Acres	<b>TO:</b> Retail & Services and Target Employment Center	



<b>JURISDICTION:</b>	Largo	<b>FROM:</b>	Office, Retail & Services, and Target Employment Center	
<b>AREA:</b>	3.3 Acres	<b>TO:</b>	Retail & Services and Target Employment Center	