

FLU-23-01
Location Map

From: R/OG, Residential Office/General
Land Use
To: I, Institutional



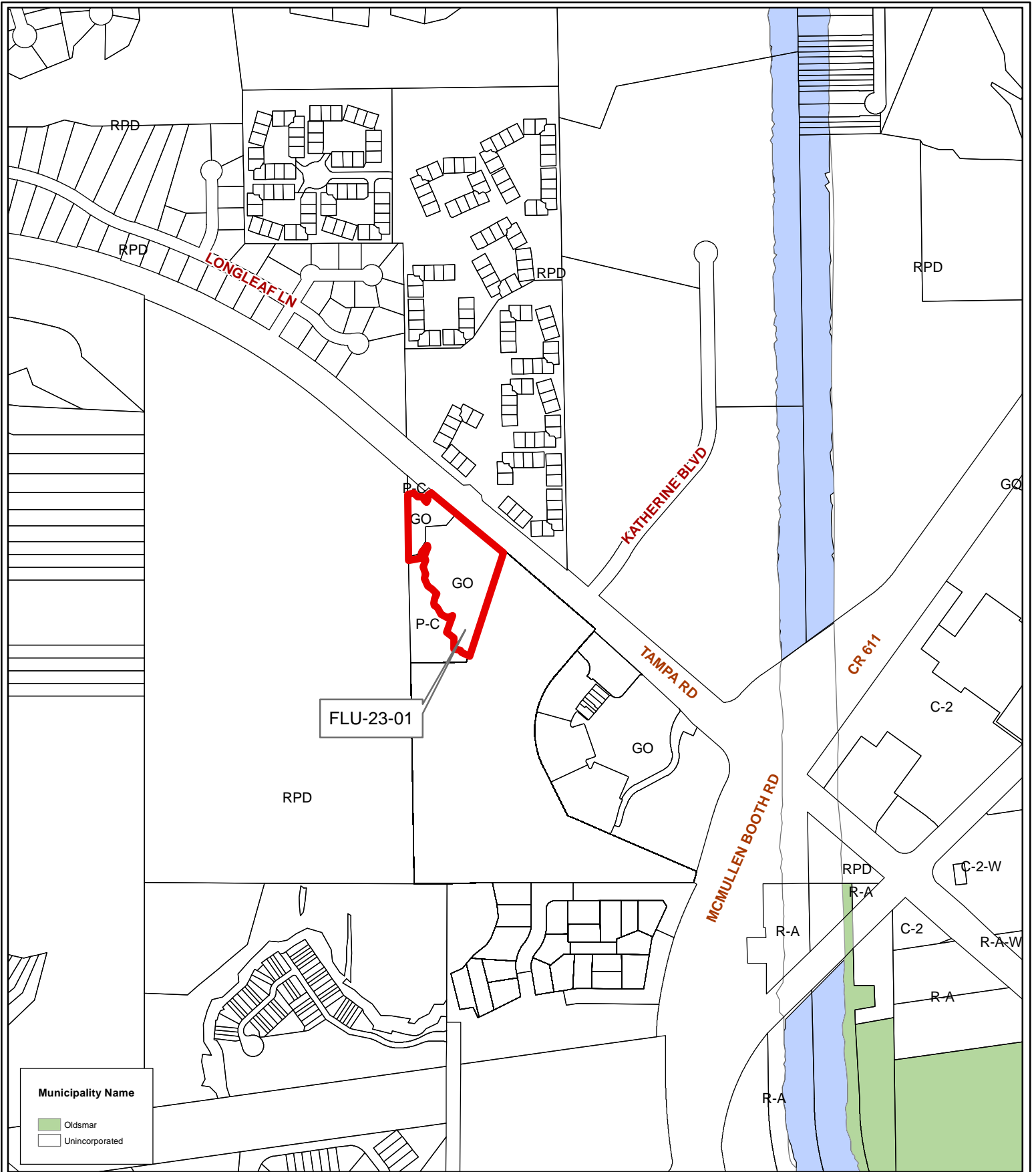
Portions of Parcels 08/28/16/47437/000/0010 & 0020

Prepared by: Housing & Community Development Department



Date: 9/12/2023

1 inch = 4.5 miles



Municipality Name

- Oldsmar
- Unincorporated

FLU-23-01

FLU-23-01
Municipal Map

From: R/OG, Residential Office/General
Land Use
To: I, Institutional



Portions of Parcels 08/28/16/47437/000/0010 & 0020
 Prepared by: Housing & Community Development Department **NORTH** Date: 9/12/2023

1 inch = 0.1 miles



FLU-23-01

FLU-23-01
Aerial Map

From: R/OG, Residential Office/General
Land Use
To: I, Institutional



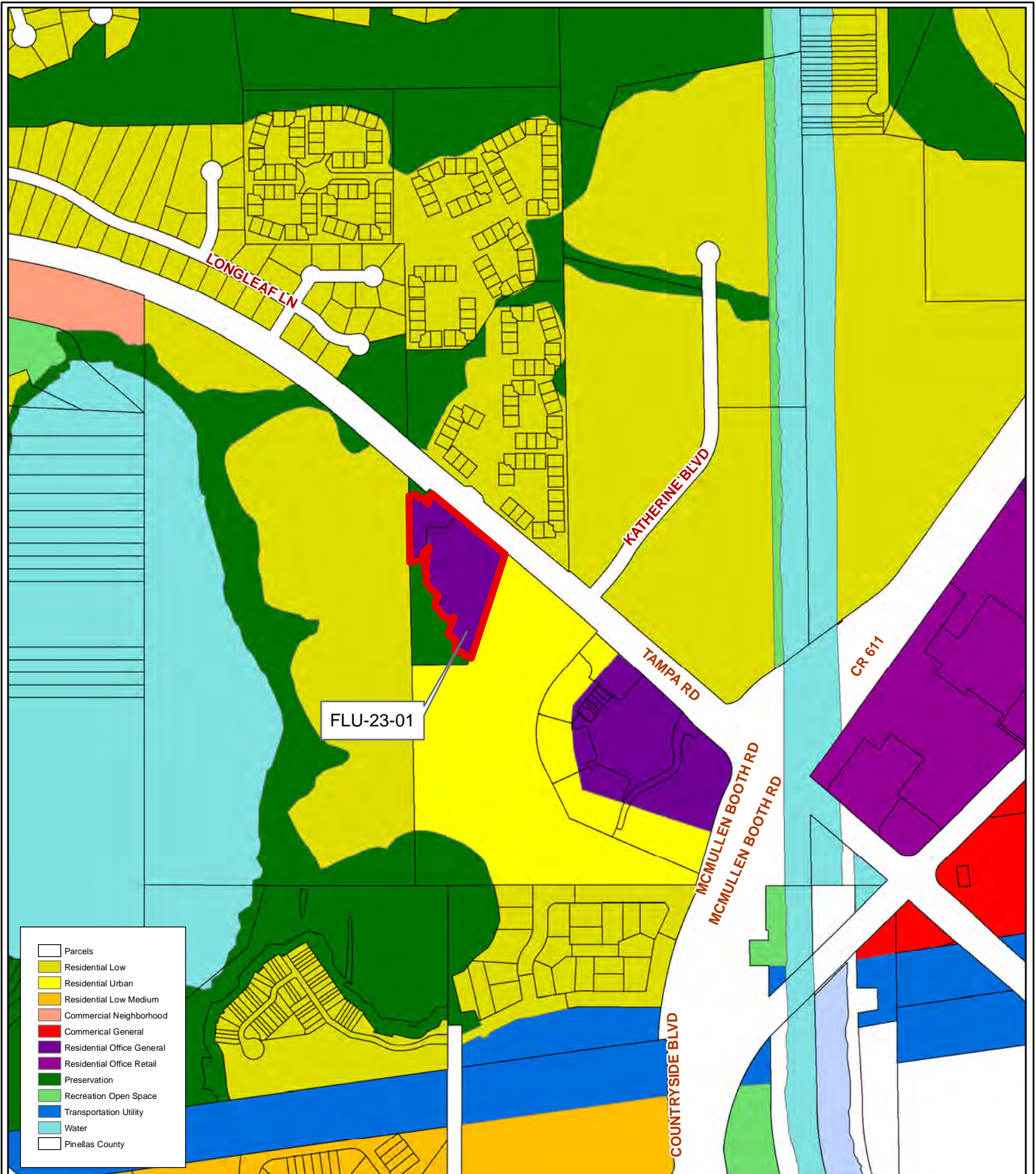
Portions of Parcels 08/28/16/47437/000/0010 & 0020

Prepared by: Housing & Community Development Department



Date: 9/12/2023

1 inch = 0.1 miles



FLU-23-01

Current Land Use

From: R/OG, Residential Office/General
Land Use
To: I, Institutional



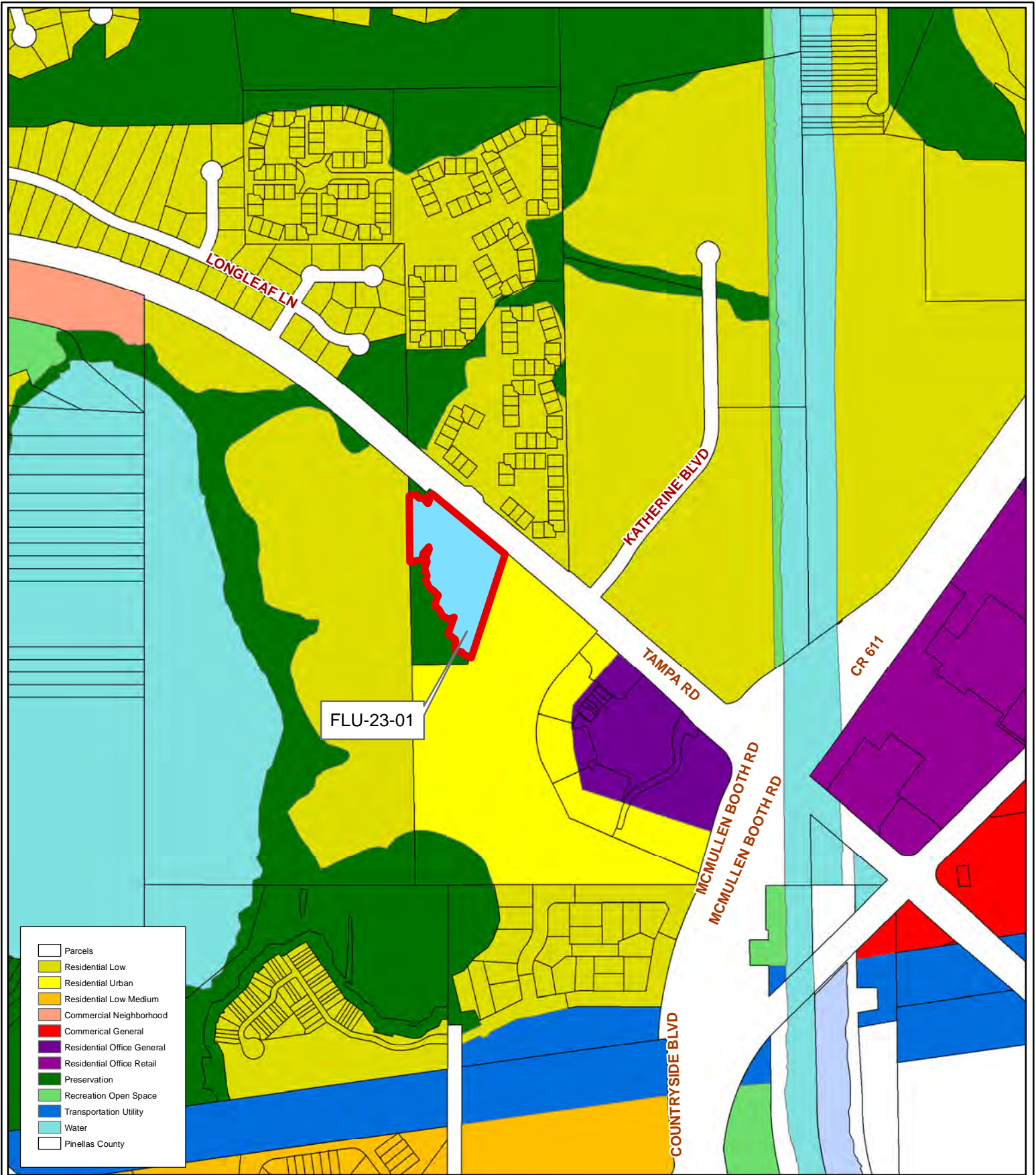
Portions of Parcels 08/28/16/47437/000/0010 & 0020

Prepared by: Housing & Community Development Department



Date: 9/12/2023

1 inch = 0.1 miles



FLU-23-01

- Parcels
- Residential Low
- Residential Urban
- Residential Low Medium
- Commercial Neighborhood
- Commercial General
- Residential Office General
- Residential Office Retail
- Preservation
- Recreation Open Space
- Transportation Utility
- Water
- Pinellas County

FLU-23-01
Proposed Land Use

From: R/OG, Residential Office/General
Land Use
To: I, Institutional



Portions of Parcels 08/28/16/47437/000/0010 & 0020

Prepared by: Housing & Community Development Department



Date: 9/12/2023

1 inch = 0.1 miles