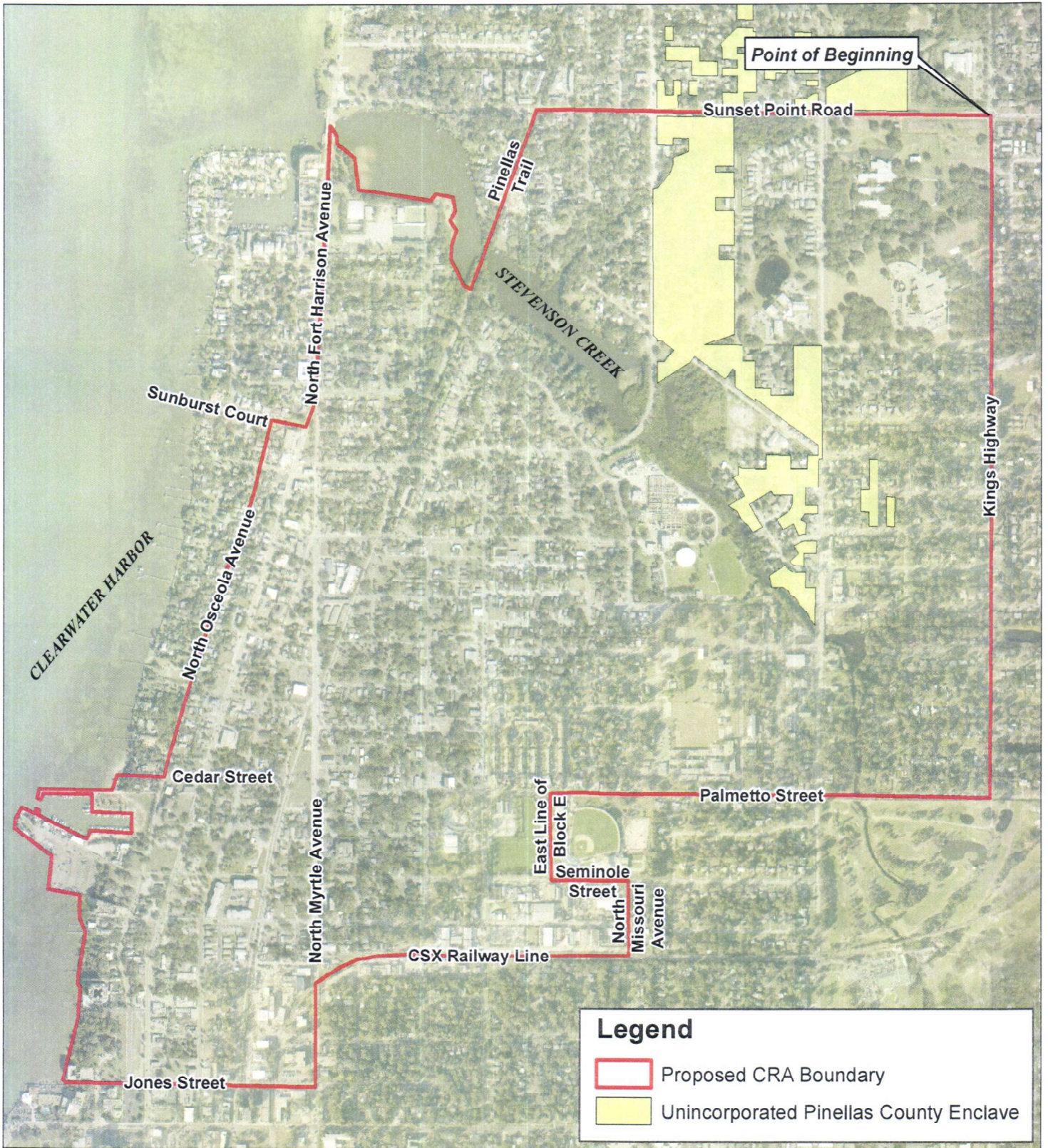



# EXHIBIT A



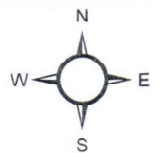
**Legend**

- Proposed CRA Boundary
- Unincorporated Pinellas County Enclave



Prepared by:  
 Engineering Department  
 Geographic Technology Division  
 100 S. Myrtle Ave, Clearwater, FL 33756  
 Ph: (727)562-4750, Fax: (727)526-4755  
 www.MyClearwater.com

## Proposed North Greenwood CRA Boundary



Map Gen By: **JB**

Reviewed By: **TM**

Date: **09/25/2020**

Page: **1 of 3**

Scale: **N.T.S.**