

RESOLUTION NO. 18-82

RESOLUTION DEDICATING A PORTION OF COUNTY OWNED
PROPERTY IN SECTION 29, TOWNSHIP 29 SOUTH, RANGE 16 EAST AS
PUBLIC ROAD RIGHT-OF-WAY FOR THE WHITNEY ROAD AT
WOLFORD ROAD INTERSECTION IMPROVEMENT PROJECT.

WHEREAS, the Pinellas County Department of Public Works is preparing for construction of an intersection improvement project at Whitney Road at Wolford Road; and

WHEREAS, Pinellas County holds title in fee simple to certain lands as described in Official Record's Book 16536-2334, lying in Section 29, Township 29 South, Range 16 East; and

WHEREAS, a portion of these lands as described in "EXHIBIT A", attached hereto, are being used for the construction of said intersection improvement project and Pinellas County is desirous of establishing the necessary road rights-of-way from said County-owned property for the Whitney Road at Wolford Road Intersection Improvement Project through this dedication.

NOW THEREFORE, BE IT RESOLVED, by the Board of County Commissioners of Pinellas County, Florida, duly assembled this 9th day of October, 2018, hereby dedicates as public road right-of-way the property described in "Exhibit A" attached hereto and authorizes the Clerk of the Circuit Court to certify and record this dedication of public road right-of-way for the Whitney Road at Wolford Road Intersection Improvement Project.

Commissioner Gerard offered the foregoing resolution and moved its adoption which was seconded by Commissioner Long, and upon roll call the vote was:

AYES: Welch, Seel, Beyrouti, Eggers, Gerard, Justice, and Long.

NAYS: None.

ABSENT OR NOT VOTING: None.

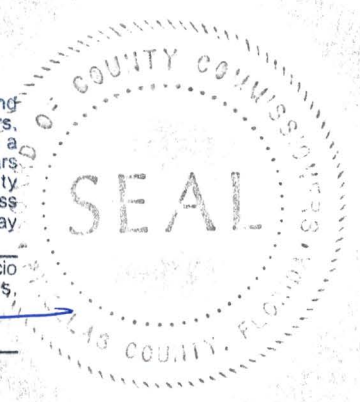
APPROVED AS TO FORM
OFFICE OF COUNTY ATTORNEY

By Joseph A. Morrissey
Attorney

I, KENNETH P. BURKE, Clerk of the Circuit Court and Clerk Ex-Officio, Board of County Commissioners, do hereby certify that the above and foregoing is a true and correct copy of the original as it appears in the official files of the Board of County Commissioners of Pinellas County, Florida. Witness my hand and seal of said County FL this 18 day of October A.D. 20 18.

KENNETH P. BURKE, Clerk of the Circuit Court Ex-Officio
Clerk of the Board of County Commissioners,
Pinellas County, Florida.

By *Janet [Signature]*
Deputy Clerk



PINELLAS COUNTY
 PUBLIC WORKS
 SURVEY AND MAPPING DIVISION
 22211 U.S. HIGHWAY 19 N.
 CLEARWATER, FLORIDA 33765-2328



SECTION(S) 29, TOWNSHIP 29 SOUTH, RANGE 16 EAST
DESCRIPTION

A portion of Lot 1, Block B, OAK KNOLL SUBDIVISION, according to Plat Book 24, Page 45, public records of Pinellas County, Florida, lying within Southeast 1/4 of Section 29, Township 29 South, Range 16 East, Pinellas County, Florida, being more particularly described as follows:

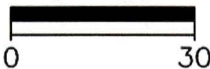
Commencing at the Southwest corner of the Southeast 1/4 of Section 29, Township 29 South, Range 16 East, Pinellas County, Florida, run S 89°15'04"E along the South line of the Southeast 1/4 of said Section 29, for a distance of 471.74 feet; thence N 01°37'08"W, for a distance of 33.00 feet to the Southeast corner of said Lot 1, Block B, also being the POINT OF BEGINNING; thence N 89°15'04"W, along the South line of said Lot 1, also being the North Right-of-Way of Whitney Road, for a distance of 32.75 feet; thence N 43°19'32"E, for a distance of 46.32 feet, to the East line of said Lot 1, also being the West Right-of-Way of Oak Street; thence S 01°37'08"E along said East line of Lot 1, for a distance of 34.14 feet, to the POINT OF BEGINNING.

CONTAINING: 559 Sq. Ft. or 0.013 acres more or less

BASIS OF BEARINGS: Bearings are base on the South line of Southeast 1/4 of Section 29, Township 29 South, Range 16 East, Pinellas County, Florida, being S 89°15'04"E.

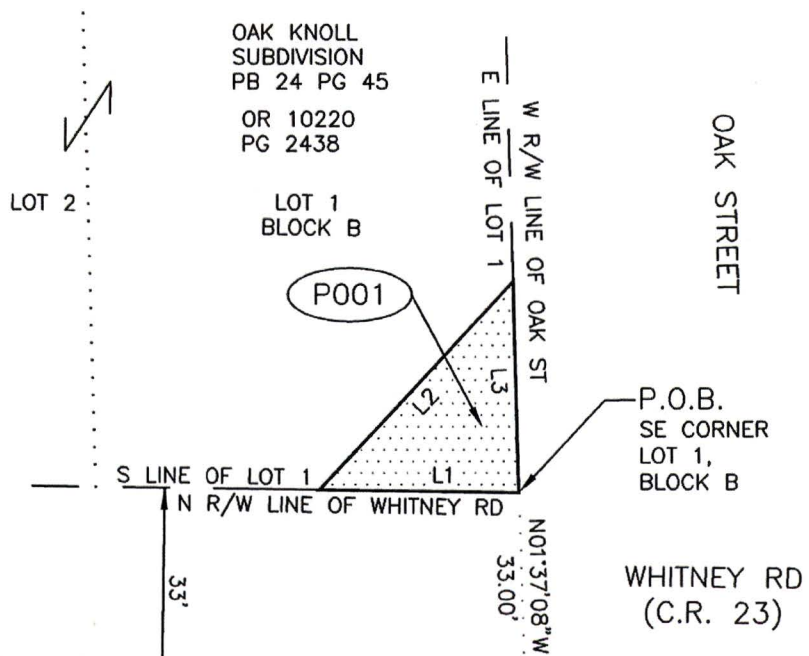
SKETCH - NOT A SURVEY

SCALE IN FEET
 1" = 30'



LINE TABLE		
LINE #	BEARING	LENGTH
L1	N89°15'04"W	32.75'
L2	N43°19'32"E	46.32'
L3	S01°37'08"E	34.14'

LEGEND	
C.R.	COUNTY ROAD
OR	OFFICIAL RECORD
PB	PLAT BOOK
PG	PAGE
P.O.B.	POINT OF BEGINNING
P.O.C.	POINT OF COMMENCEMENT
R/W	RIGHT-OF-WAY



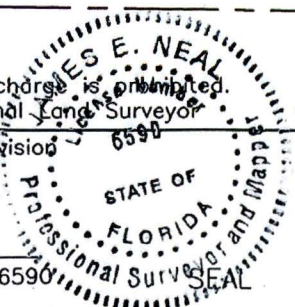
S LINE OF THE SE 1/4 OF SECTION 29-29-16
 N LINE OF THE NE 1/4 OF SECTION 32-29-16
 SW CORNER OF THE SE 1/4 OF SECTION 29-29-16

S89°15'04"E 471.74'

33.00'

N01°37'08"W

Additions or deletions by other than the Professional Land Surveyor in responsible charge is prohibited.
 Land Description is invalid without signature and embossed seal of the Professional Land Surveyor



CALCULATED BY: RW
 CHECKED BY: GD
 S.F.N.: 1812_00002

The above Sketch and/or Land description was prepared under my supervision and is true and correct to the best of my knowledge and belief.

By: Pinellas County Survey and Mapping Division

DATE 8/27/2013

JAMES E. NEAL, PROFESSIONAL SURVEYOR AND MAPPER LICENSE NUMBER: 6590
 STATE OF FLORIDA, PHONE # (727) 464-8904

I, KENNETH P. BURKE, Clerk of the Circuit Court and
Clerk Ex-Officio, Board of County Commissioners,
do hereby certify that the above and foregoing is a
true and correct copy of the original as it appears
in the official files of the Board of County
Commissioners of Pinellas County, Florida. Witness
my hand and seal of said County FL this _____ day
of _____ A.D. 20____

KENNETH P. BURKE, Clerk of the Circuit Court Ex-Officio,
Clerk of the Board of County Commissioners,
Pinellas County, Florida.

By James Butler
Deputy Clerk

