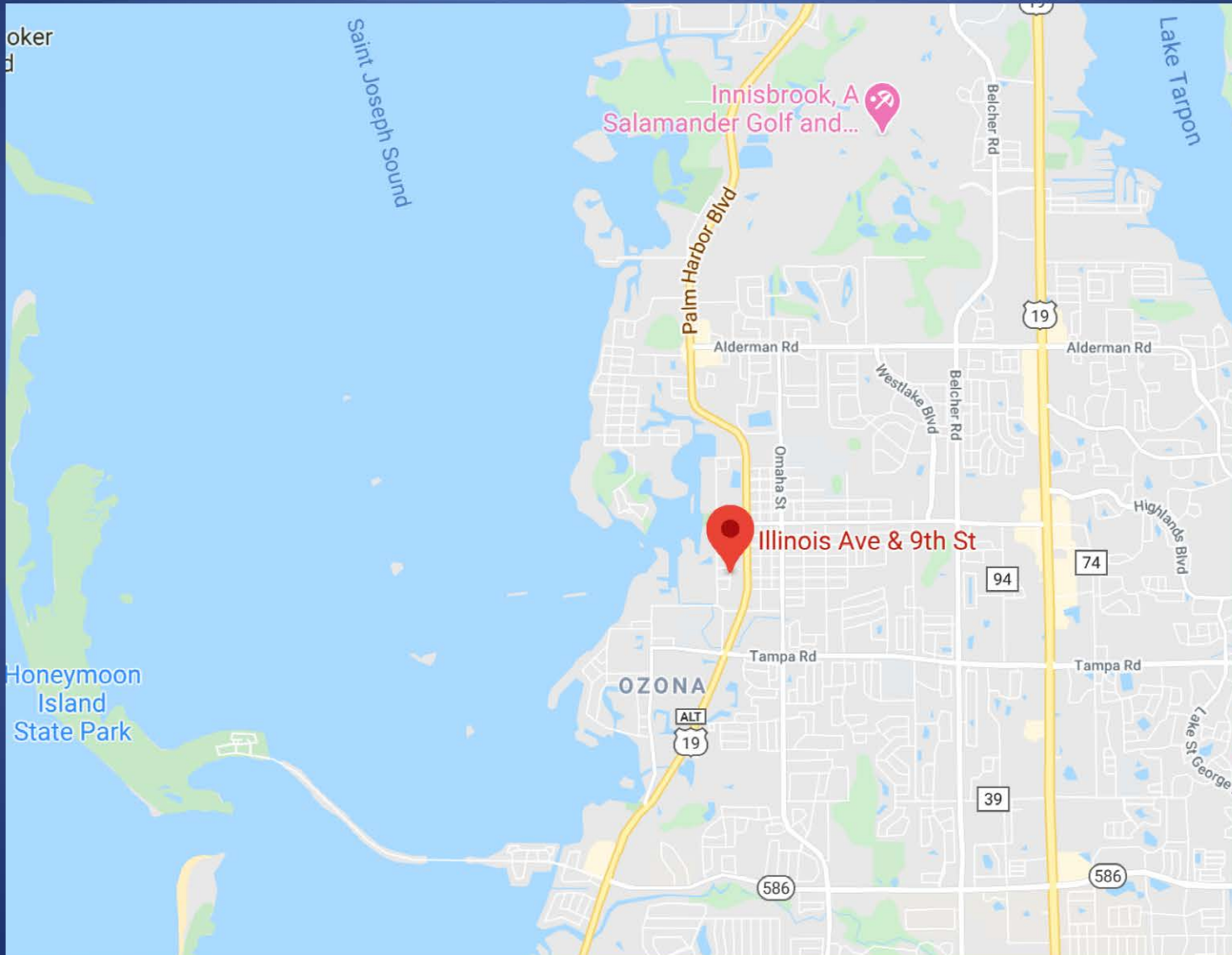
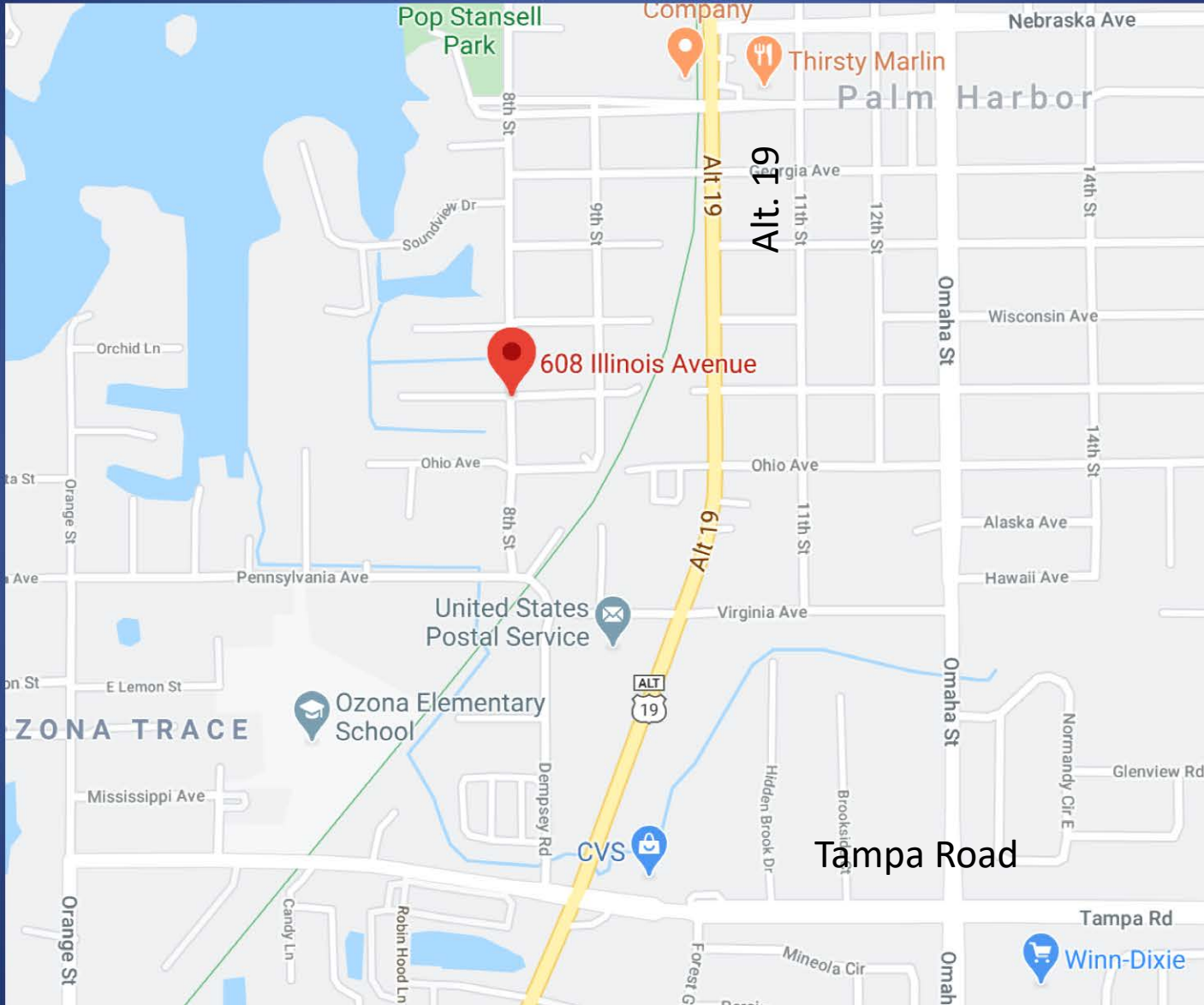
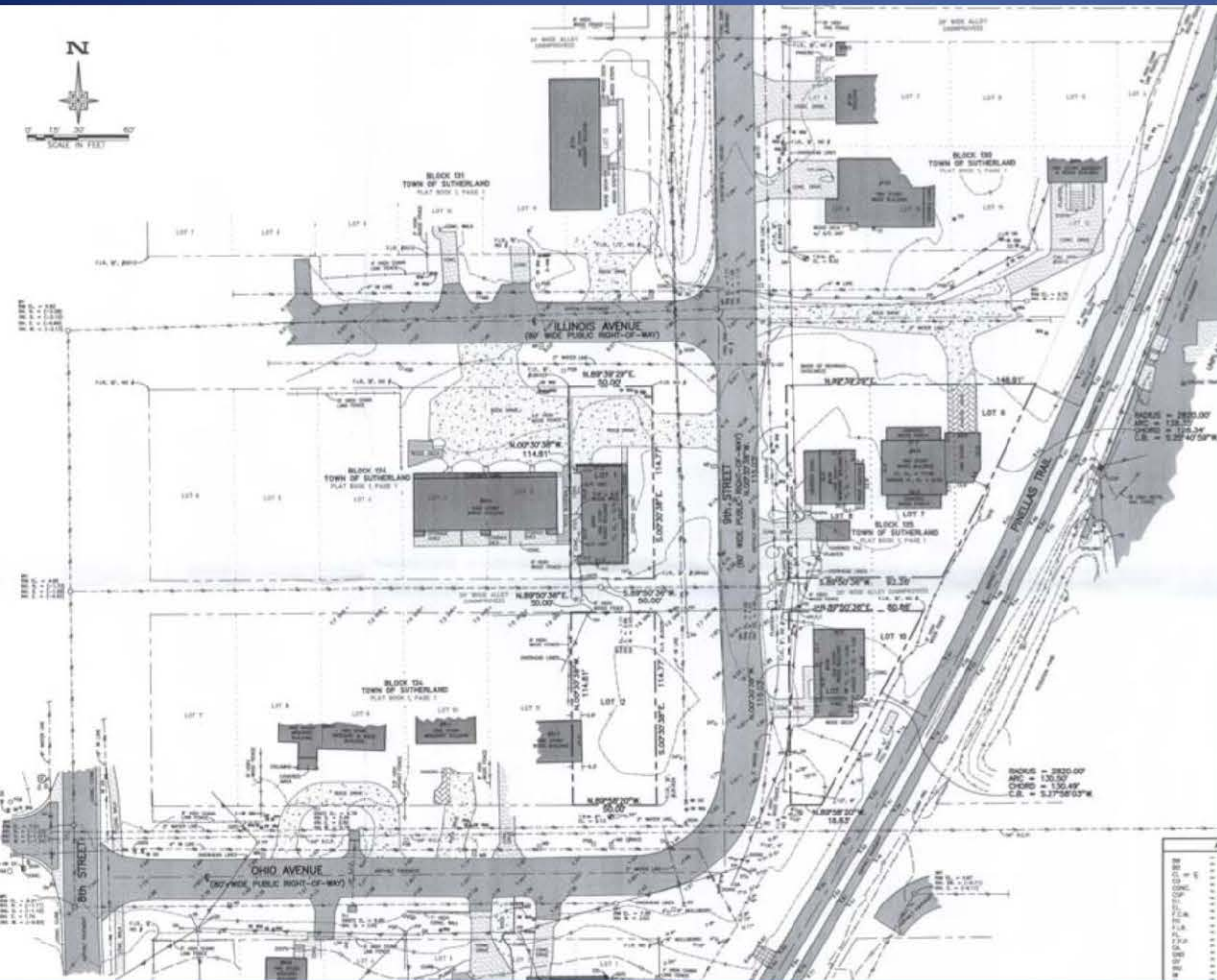


# LOCATION







Approx. 2 years ago.

MUCH reduced plan today



920 Illinois Ave.,  
Palm Harbor





# Orientation of Vacate/Easement Issues and Existing Conditions

(Approximate and not to scale)

# Current Trail Path



Trail Access Point



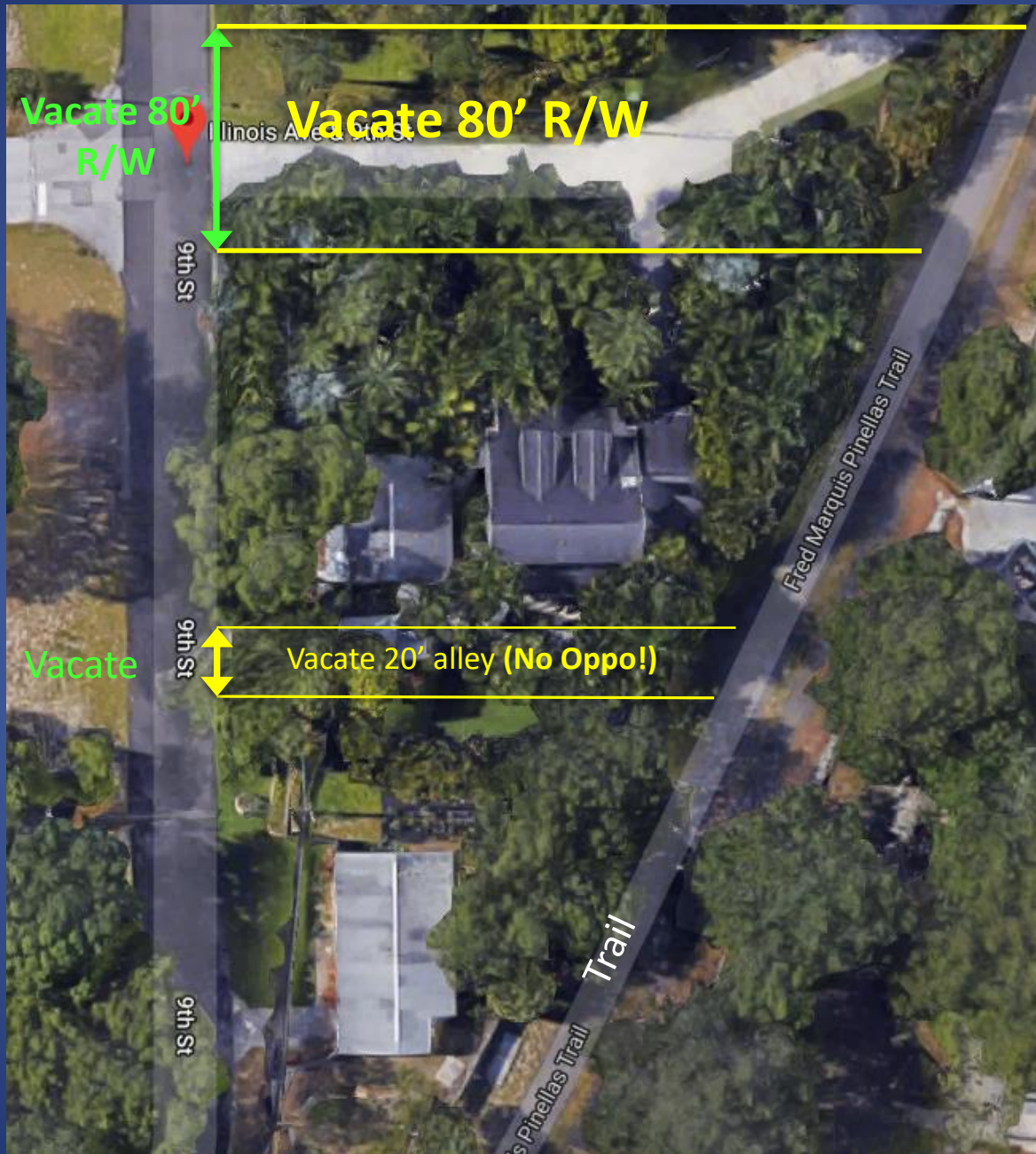
2 other petitioner's

Muller

Illinois

**With experts, we submitted a successful plan to address all concerns:**

**Vacating Steps:**



# 1) Vacate Two Areas

(approximate and not to scale)

a) Vacate 80' wide

b) Vacate 20' wide (NO OPPO!)

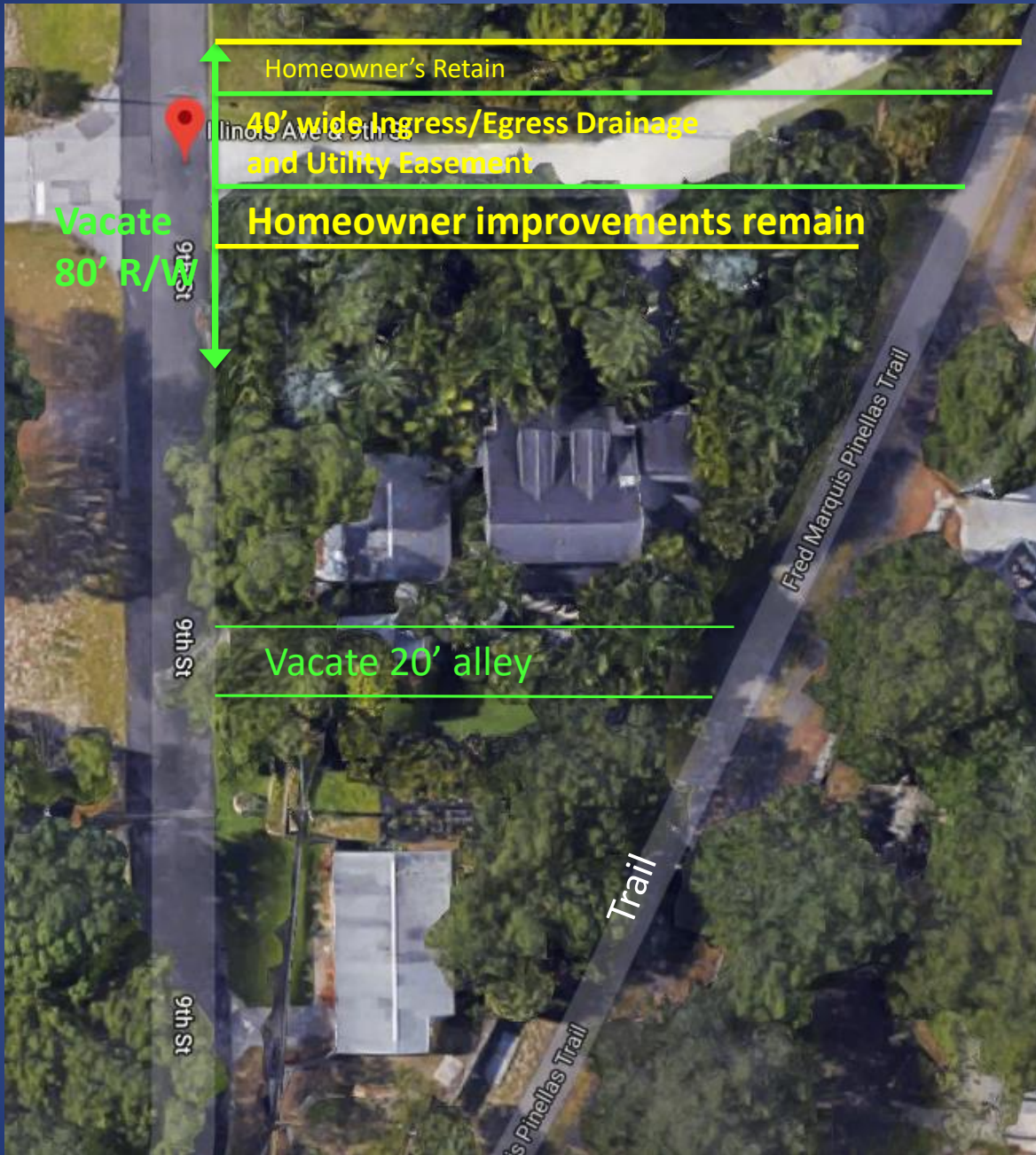




## 2) Provide Easement

(approximate and not to scale)

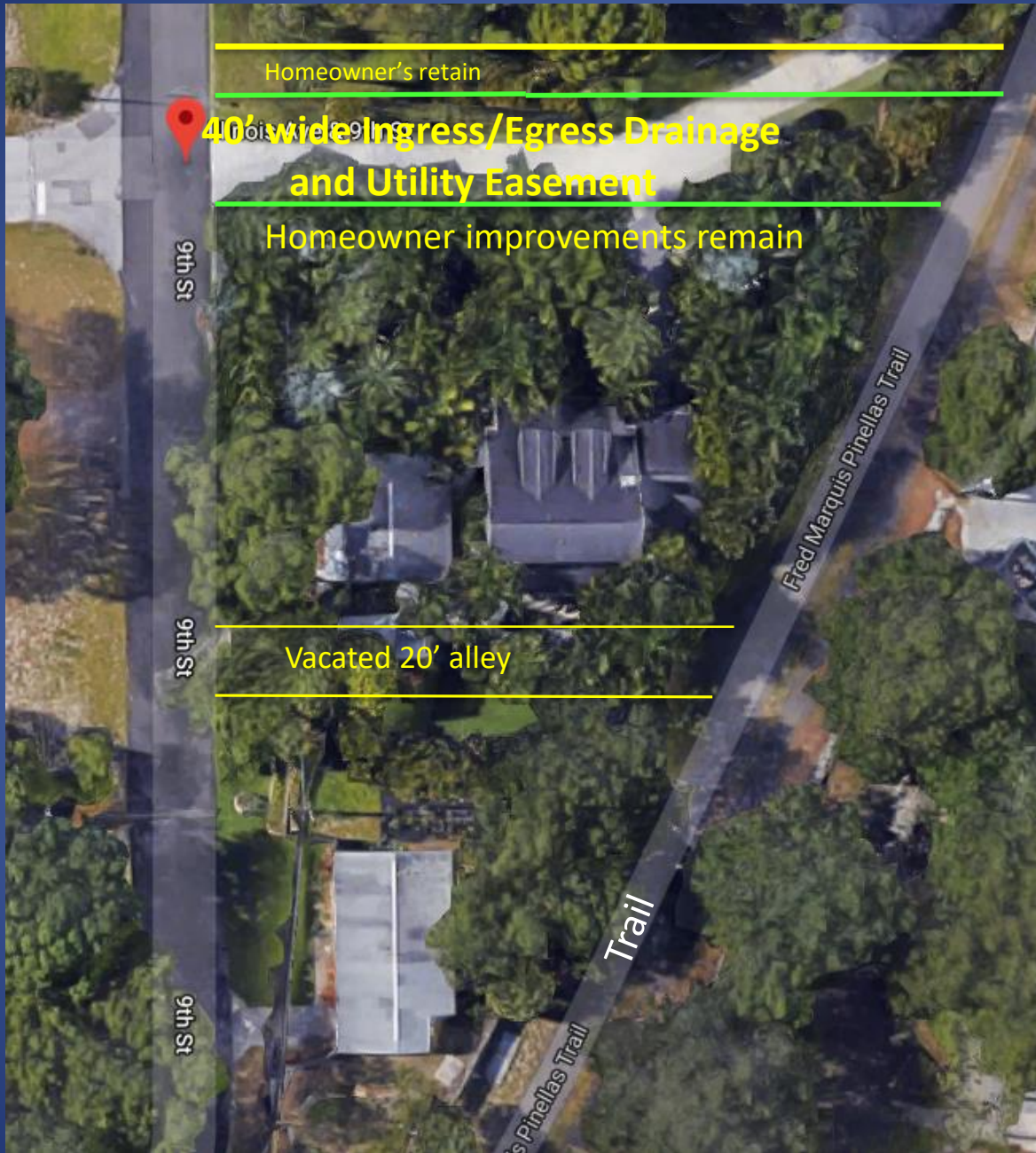
- a) Maintain 40' wide easement for public trail access, drainage and utilities



### 3) Homeowner's Improvements Remain

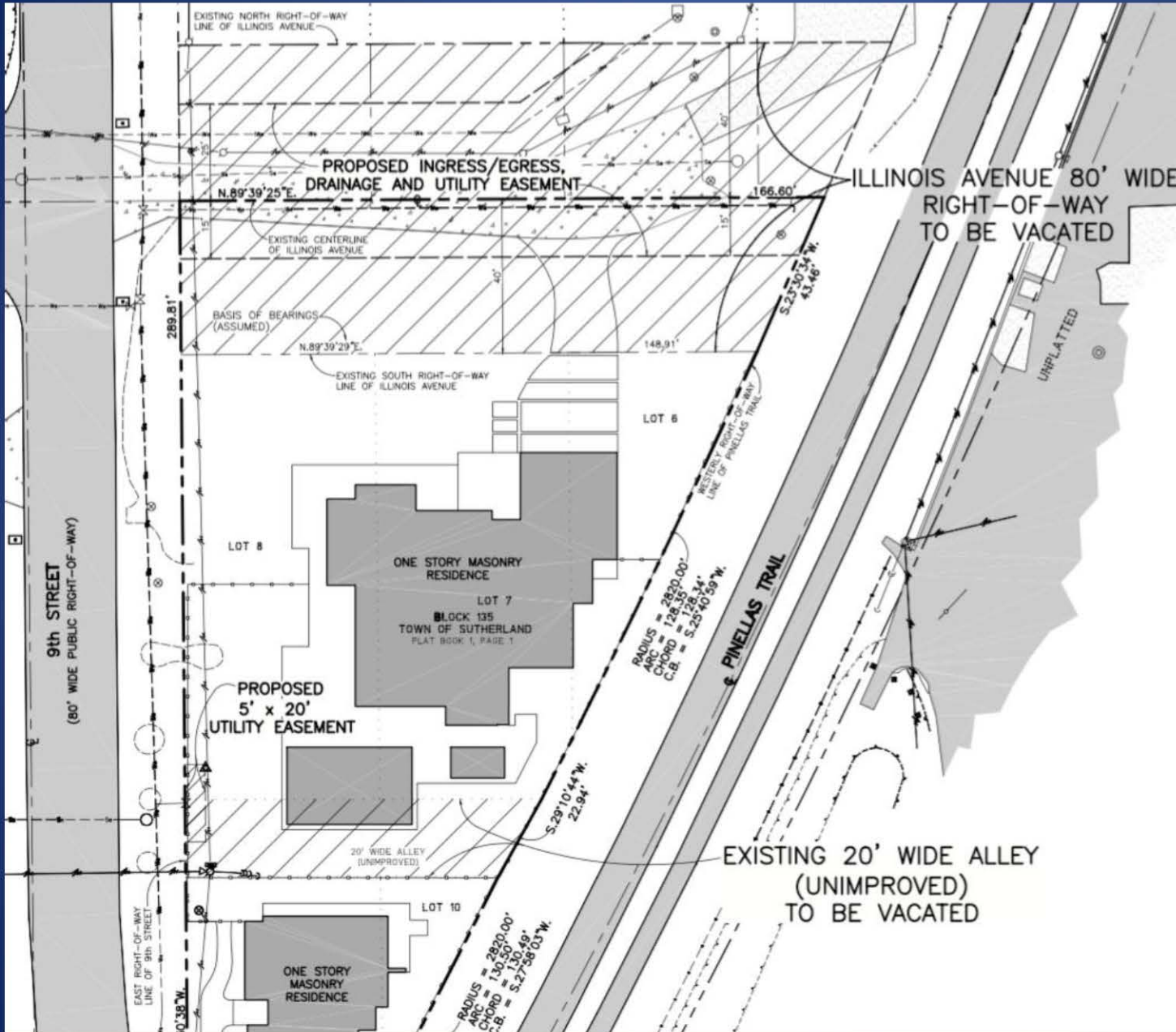
(approximate and not to scale)

Allows homeowner improvements to remain



## Action Summary

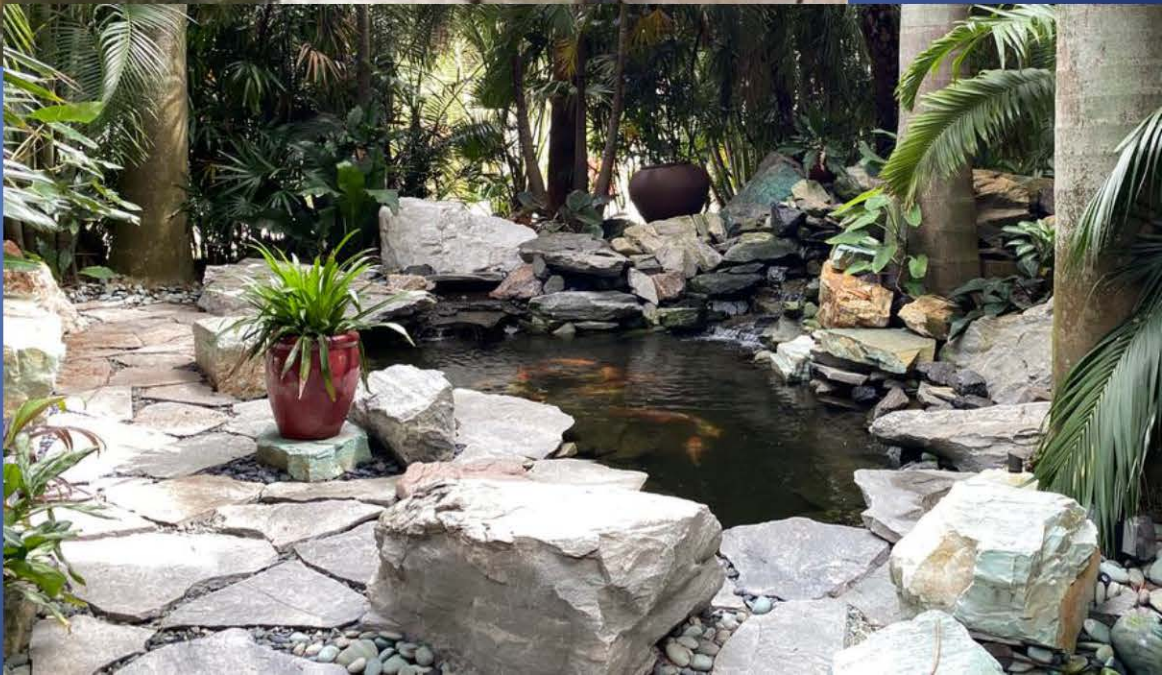
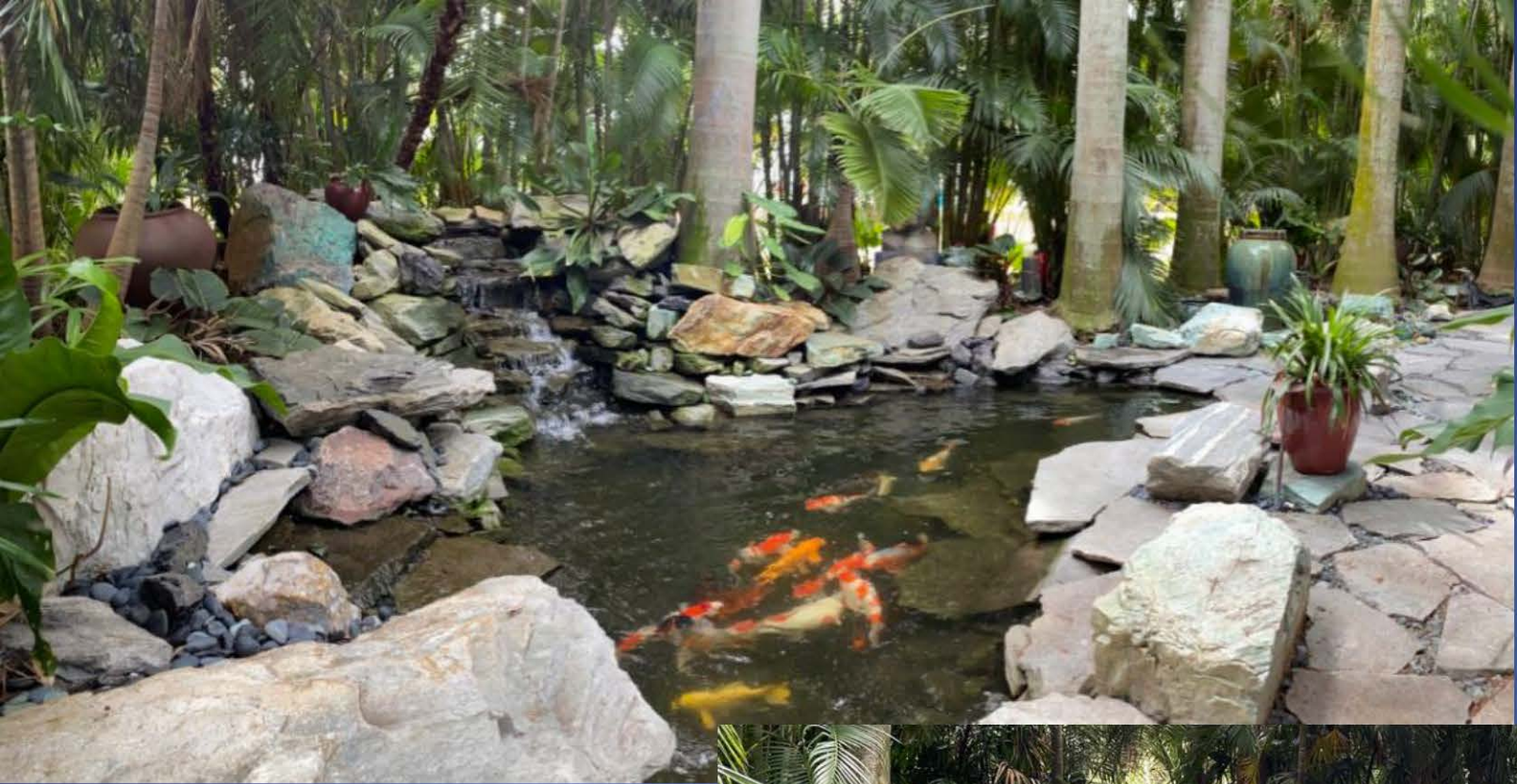
(approximate and not to scale)



Technical Drawing

# Improvements















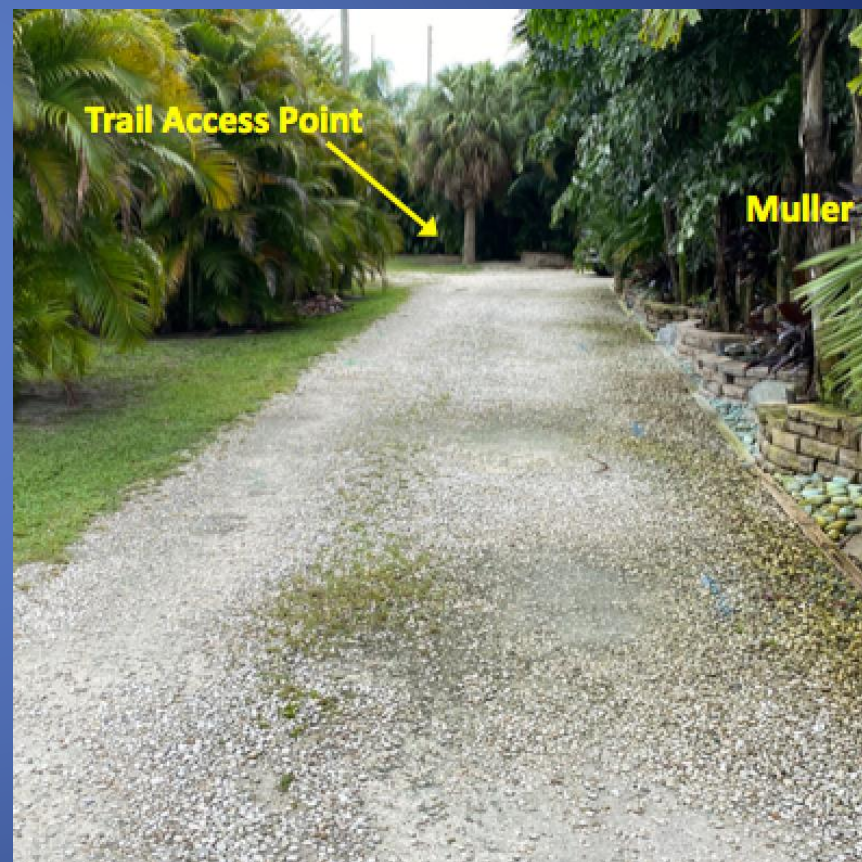
**Muller's did a mail out and  
held a community  
meeting...been talking with  
neighbors**

# Staff Concern: Trail Access

Again, no closing of any trail access

2<sup>nd</sup> nearby access not involved.

(Muller's have been maintaining it for many years)



# Staff Concern: Stormwater

-Staff is 'on an undetermined hold' or in stasis in regard to stormwater in this area. Don't know when, what, where, how or if ever. Unknown.

-Submitted intensive drainage plan by Tom Radcliffe, Civil Engineer, Lloveras, Baur, Stevens firm, designing same projects 45 years, thousands systems, never had a problem, decades of drainage engineering, has studied the area intensely. No problems. Devised successful vacating plan today.

The logo for Lloveras, Baur and Stevens is presented in a dark, semi-transparent rectangular box. The background of the box is a blurred aerial photograph of a road and surrounding greenery. The company name is written in a large, bold, white sans-serif font.

**Lloveras, Baur and Stevens**

Engineering Excellence Since 1956

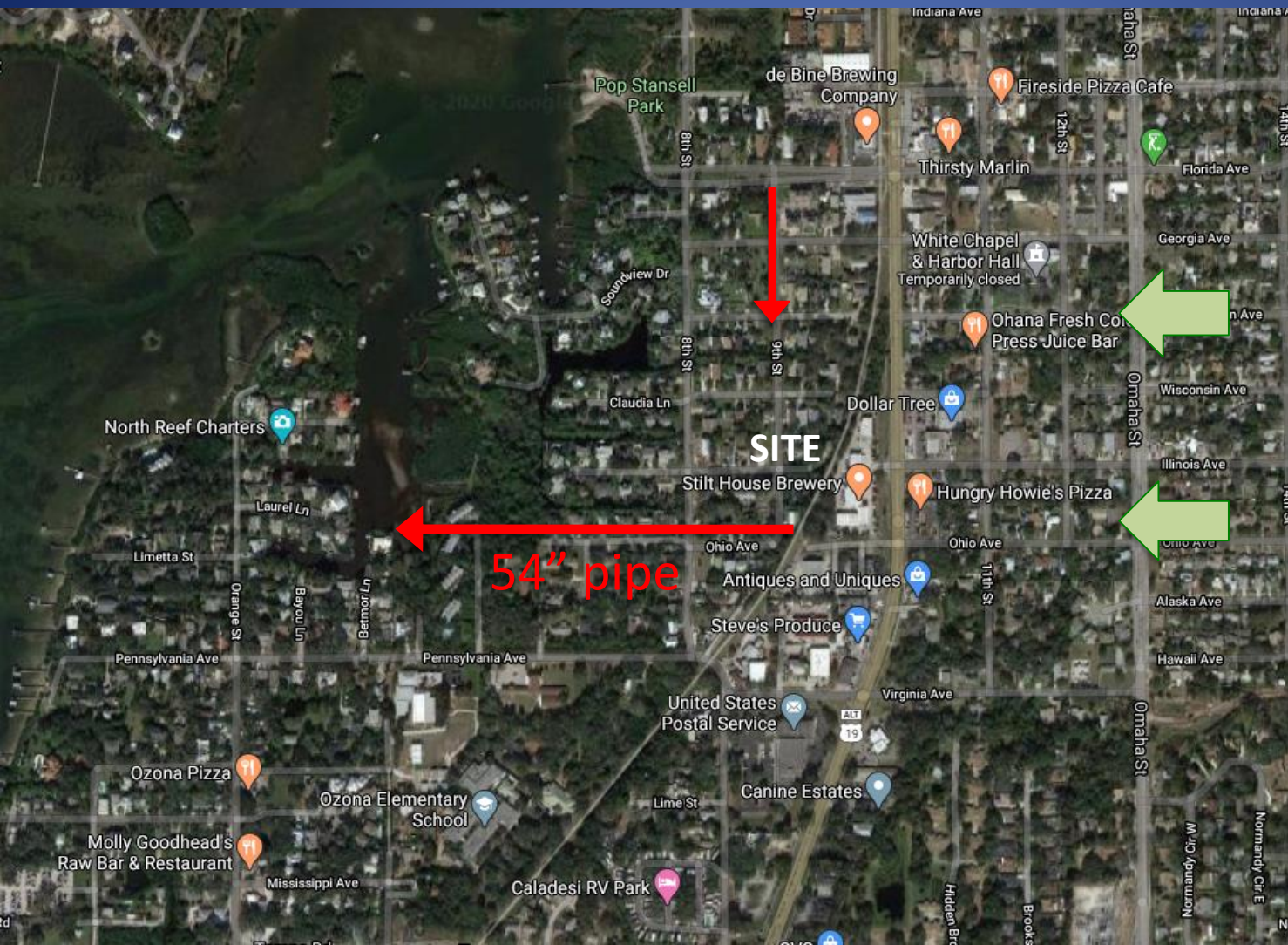
# Staff Concern: Stormwater

- Illinois is a higher point
- Broad scale, Illinois is far from the best and much more difficult route to drain water. Already have alternative natural and man made routes are much better & be improved.
- Test of time, 16 years, Trop. storms, etc., no problems.
- The County takes back drainage, utility and access easement. 20' either side.

The logo for Lloveras, Baur and Stevens is set against a background image of a road and trees. The company name is written in a large, bold, white serif font. A thin white horizontal line is positioned below the company name.

**Lloveras, Baur and Stevens**

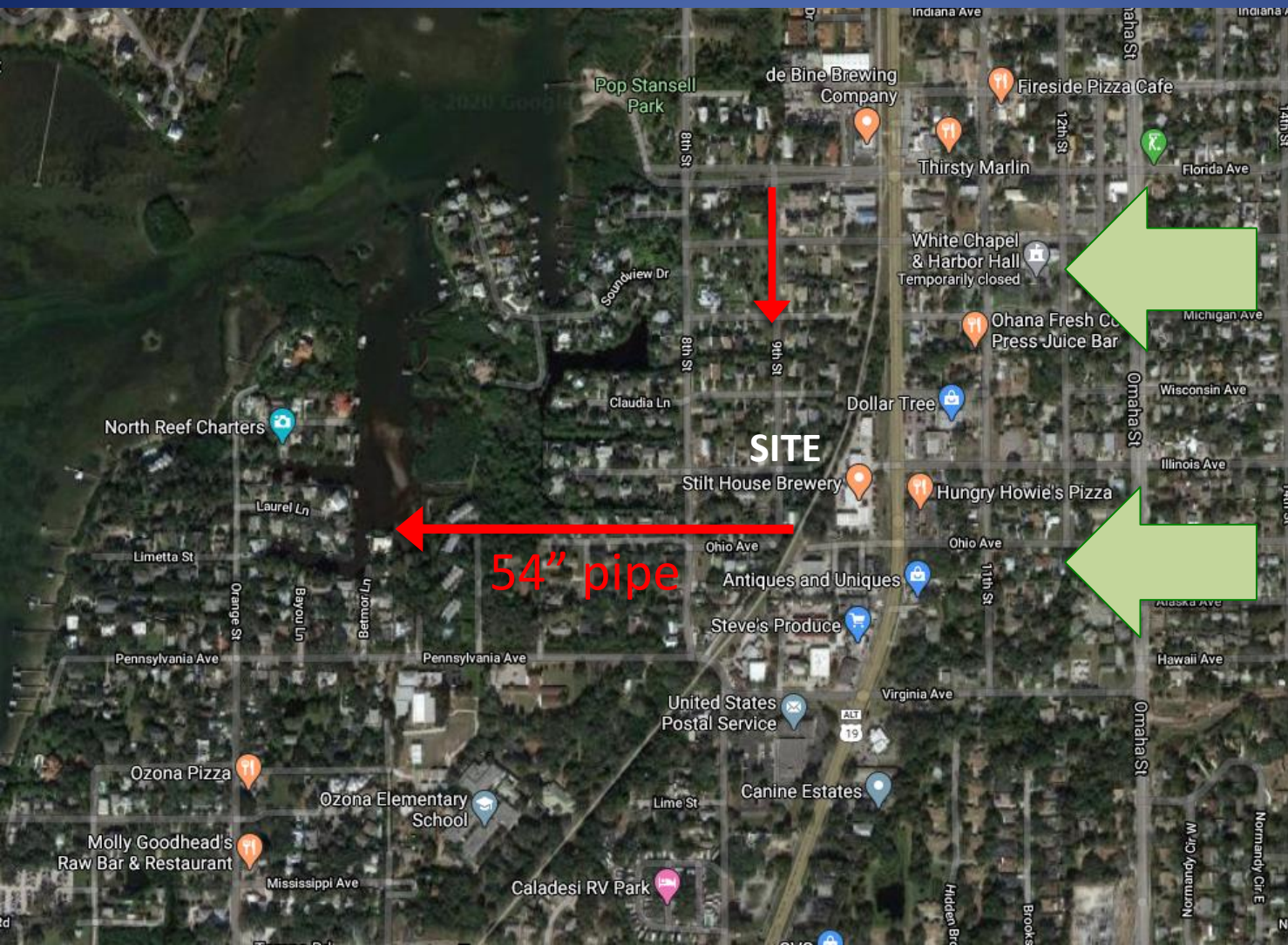
Engineering Excellence Since 1956



Existing and  
Natural  
Drainage

Illinois Best Route?





Scale. Do 2,  
20' strips make  
a difference?



**Existing  
Conditions**

**Structure  
blocks**

(Approximate and not to scale)



## 2) Provide Easement

(approximate and not to scale)

- a) Maintain 40' wide easement for public trail access, drainage and utilities

# SUMMARY:

- Trial access remains
- Proposed vacating and easements address concerns & return drainage area
- Expert look, review and study area closely
- Scale of staff's concerns minute in regard to 2 small tiny little swatches
  - Improvements to remain, test of time
    - Worked with neighbors
- Illinois poor route & location for stormwater