

Surrounding Counties

ZON-20-1

Location Map

Zoning

From: R-4 - One, Two & Three Family Residential & C-2 - General Commercial & Services District

To: RMH - Residential Mobile/Manufactured Home



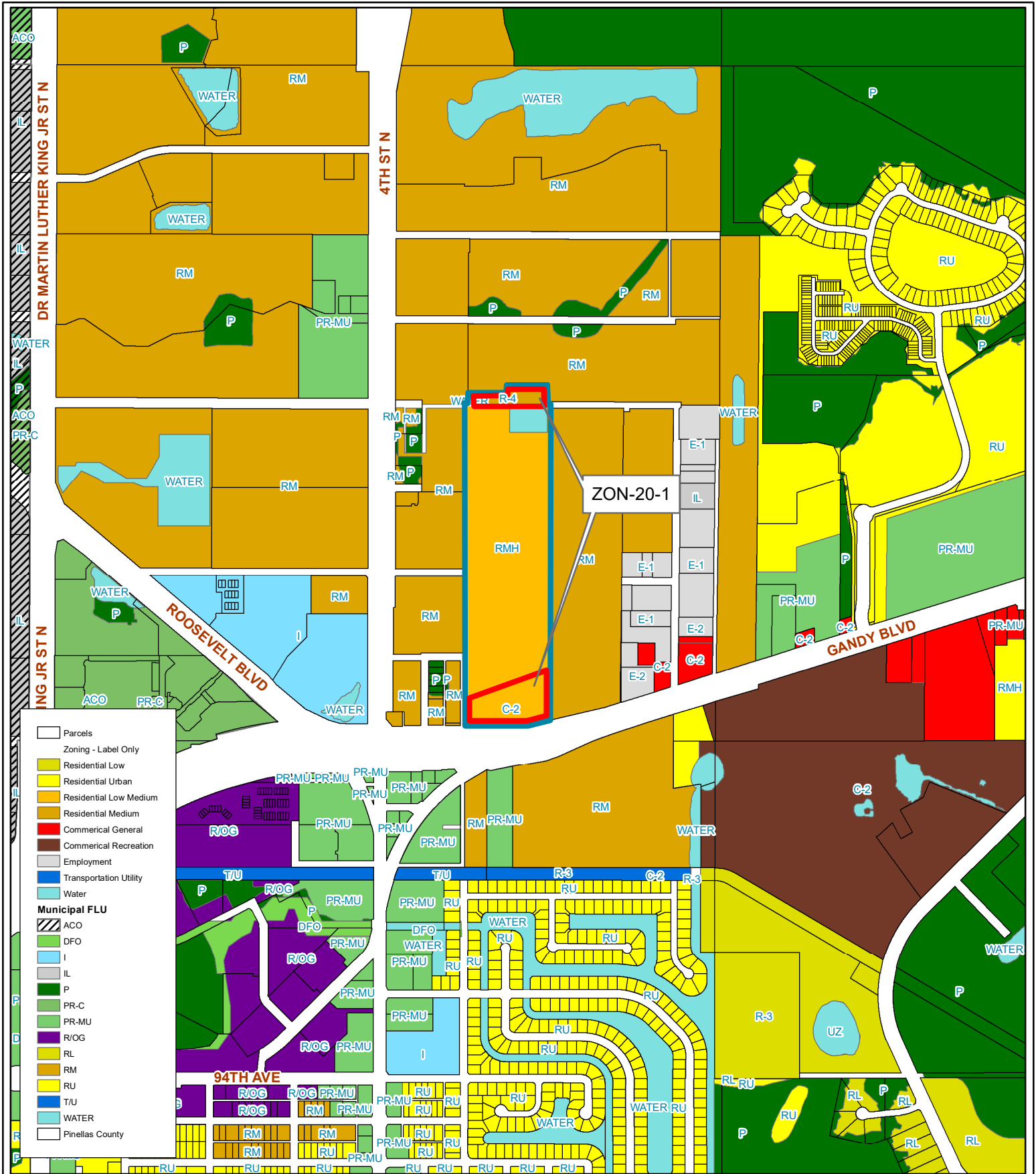
18/30/17/00000/420/0100

Prepared by: Pinellas County Planning Department



Date: 11/21/2019

1 inch = 4.5 miles



ZON-20-1

Current Zoning

Zoning

From: R-4 - One, Two & Three Family Residential & C-2 - General Commercial & Services District

To: RMH - Residential Mobile/Manufactured Home

18/30/17/00000/420/0100

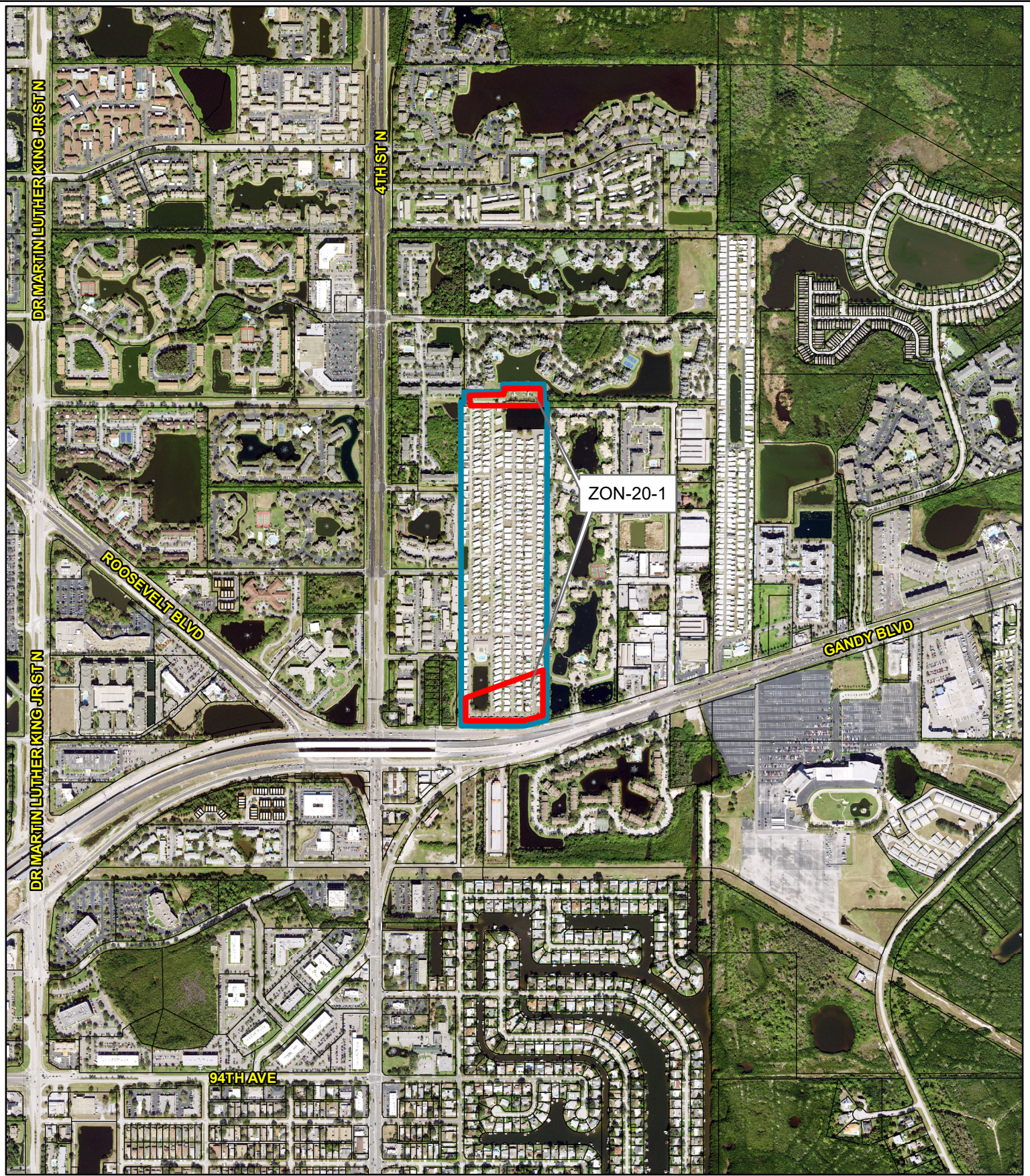
Prepared by: Pinellas County Planning Department



Date: 11/21/2019



1 inch = 0.19 miles



ZON-20-1

Aerial Map

Zoning

From: R-4 - One, Two & Three Family Residential &
C-2 - General commercial & Services District

To: RMH - Residential Mobile/Manufactured Home

18/30/17/00000/420/0100

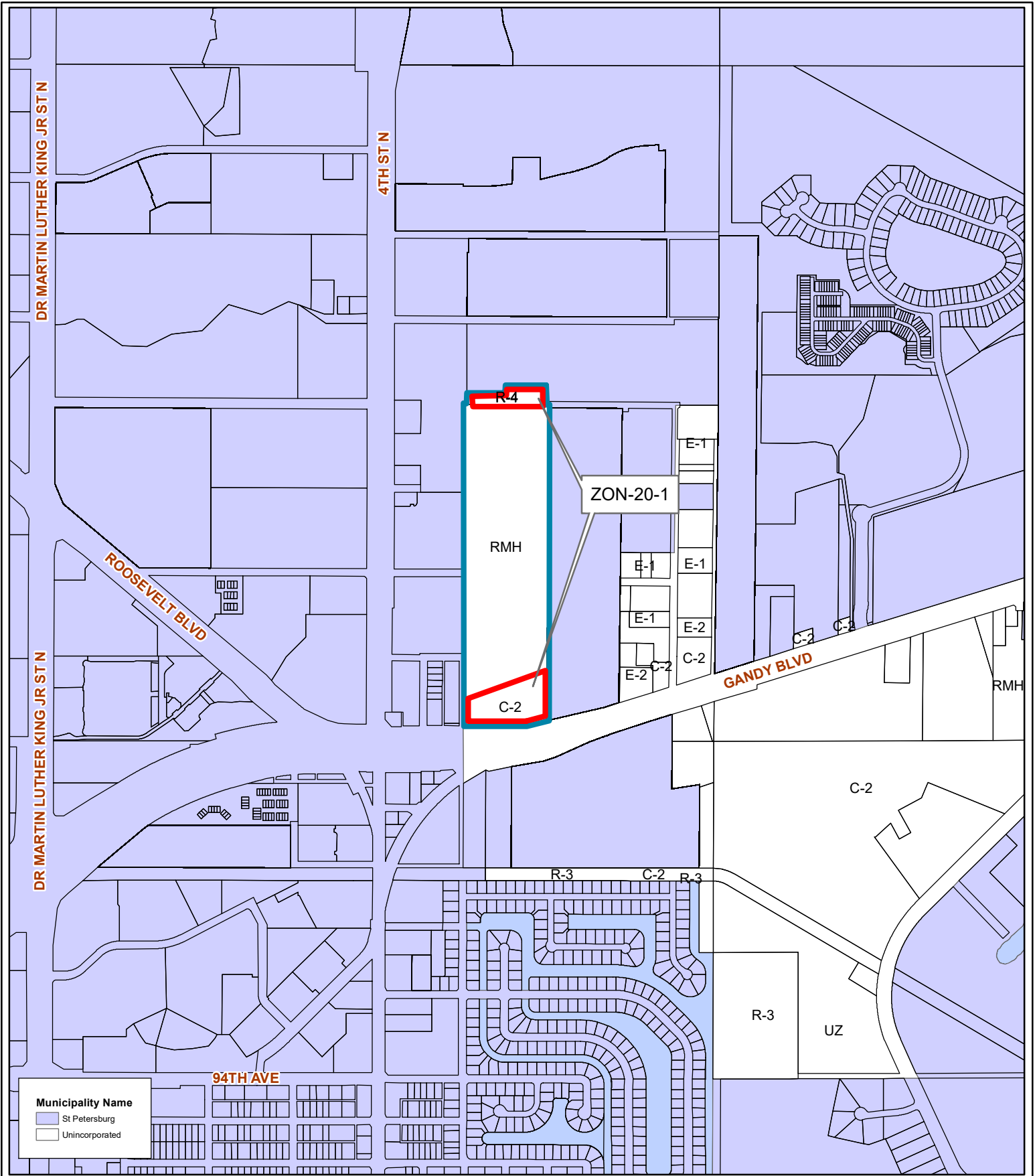
Prepared by: Pinellas County Planning Department



Date: 11/21/2019



1 inch = 0.19 miles



ZON-20-1

Municipal Map

Zoning

From: R-4 - One, Two & Three Family Residential & C-2 - General Commercial & Services District

To: RMH - Residential Mobile/Manufactured Home

18/30/17/00000/420/0100

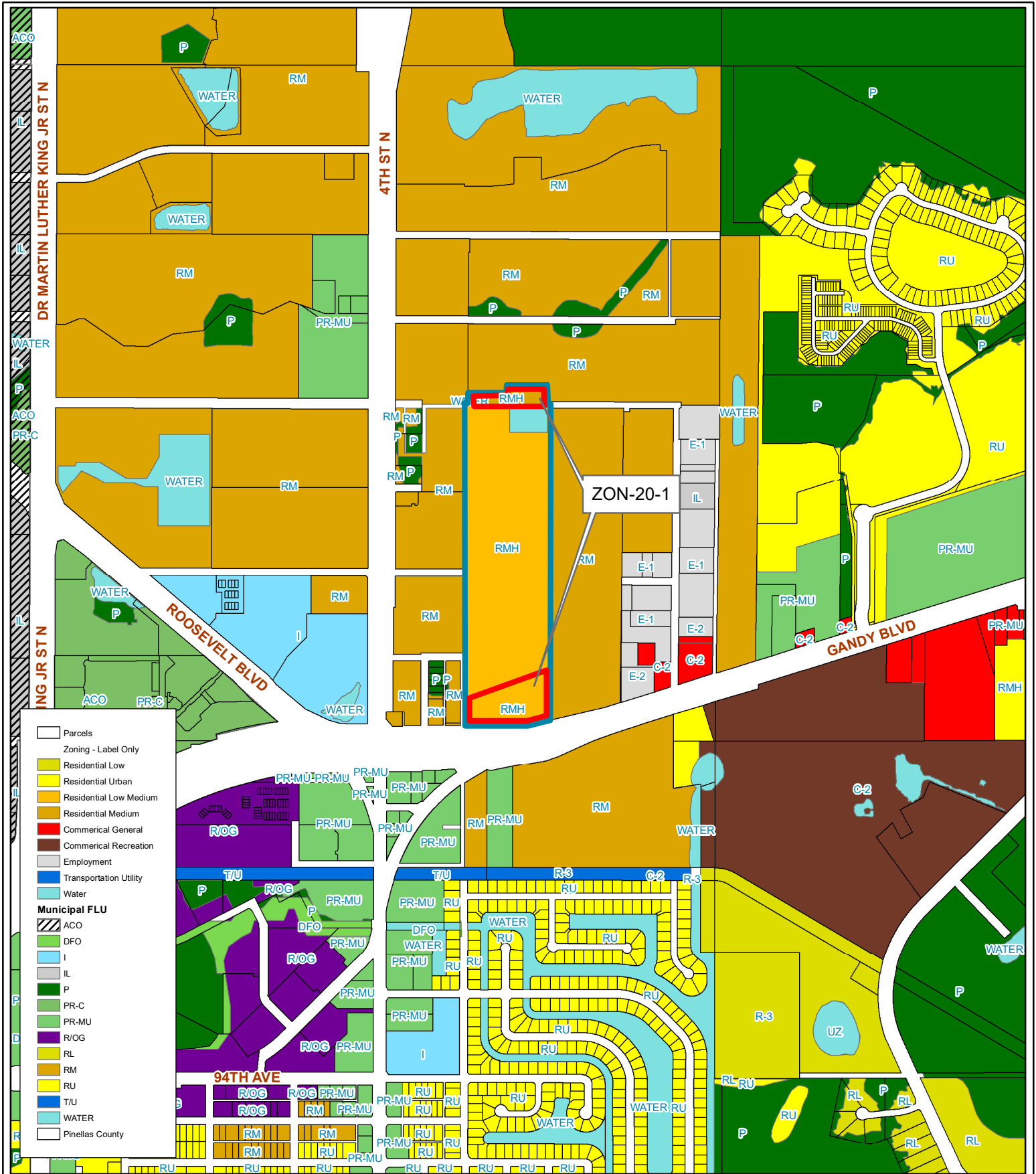
Prepared by: Pinellas County Planning Department



Date: 11/21/2019



1 inch = 0.19 miles



ZON-20-1

Proposed Zoning

Zoning

From: R-4 - One, Two & Three Family Residential & C-2 - General Commercial & Services District

To: RMH - Residential Mobile/Manufactured Home

18/30/17/00000/420/0100

Prepared by: Pinellas County Planning Department



Date: 11/21/2019



1 inch = 0.19 miles