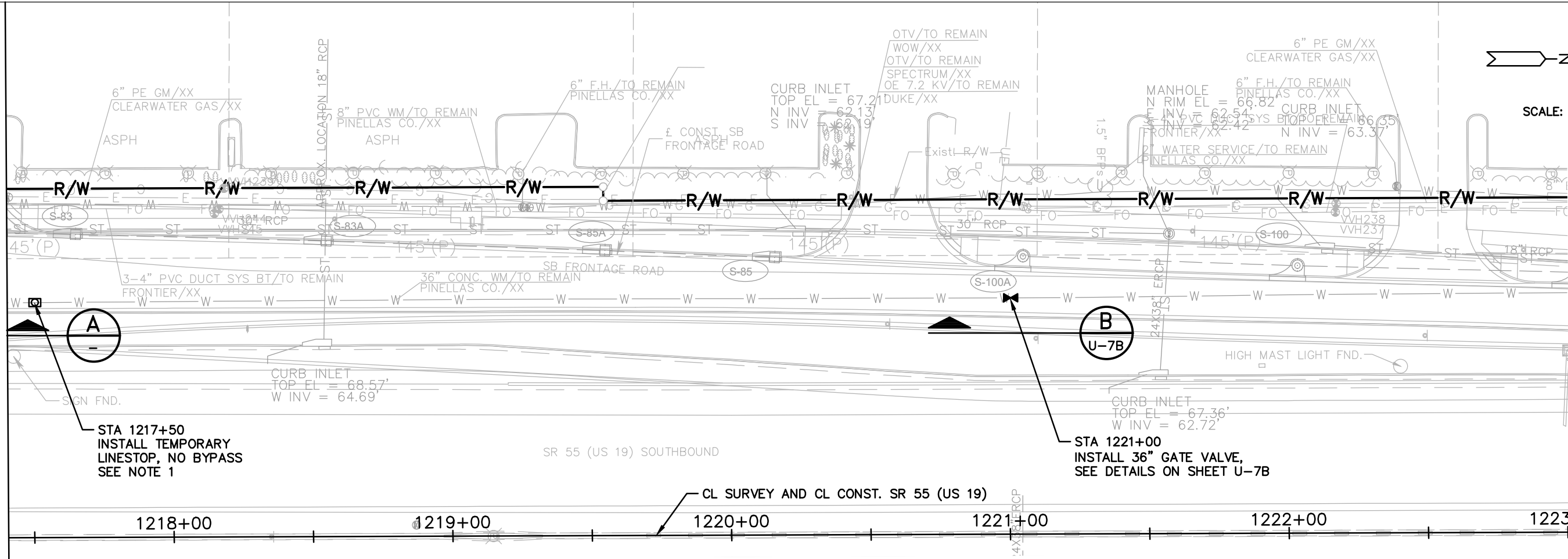
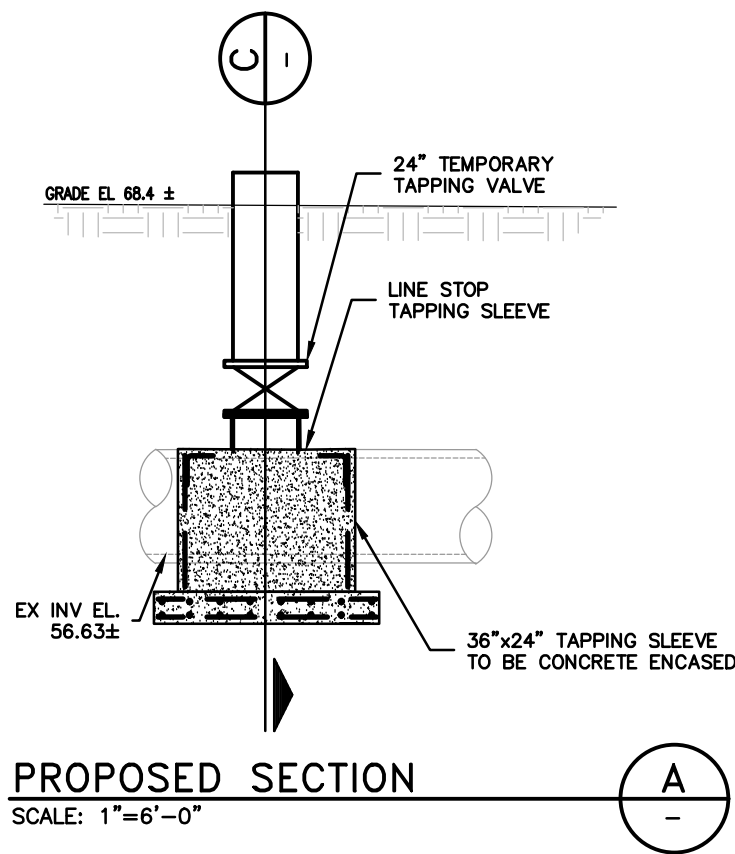


MATCHLINE STA. 1217+40 - SEE SHEET U-7

SEE SHEET U-9 FOR CONTINUATION

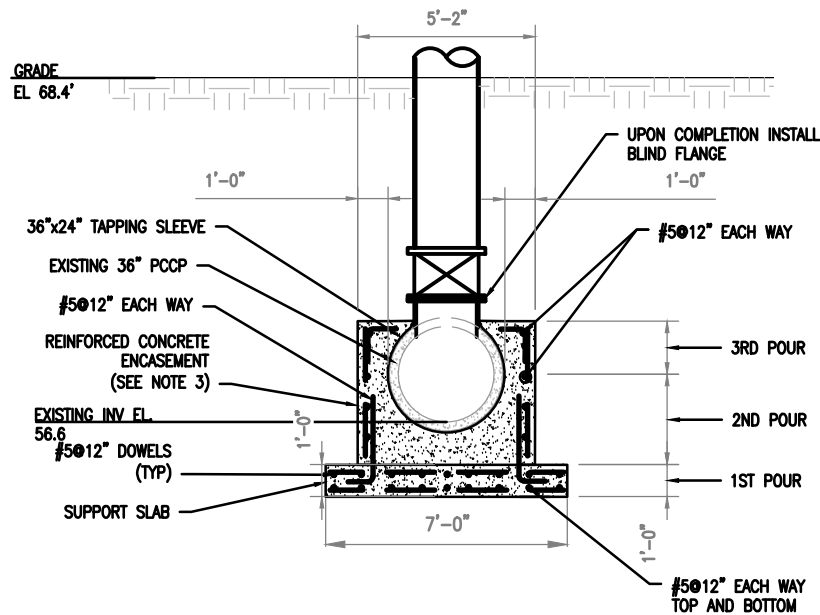


PLAN VIEW



PROPOSED SECTION
SCALE: 1"=6'-0"

A



LINE STOP SECTION
SCALE: 1"=6'-0"

C

NOTES:

1. LOCATE PIPE JOINTS IN FIELD AND INSTALL LINESTOP ON FULL LENGTH PIPE SEGMENT CENTERED BETWEEN JOINTS. COORDINATE LINESTOP INSERTION AND PIPE ISOLATION WITH PINELLAS COUNTY UTILITIES AND THE ENGINEER.
2. DISTANCE FROM LINESTOP ASSEMBLY TO THE SOUTHERNMOST REMOVED PIPE SEGMENT MUST BE A MINIMUM OF 300 LINEAR FEET.
3. PROVIDE ADEQUATE TEMPORARY SUPPORT TO EXISTING PIPE WHILE THE NEW SUPPORT SLAB IS BEING CONSTRUCTED. SUBMIT SHOP DRAWINGS INDICATING INSTALLATION PROCEDURES FOR APPROVAL PRIOR TO INITIATING THE WORK.
4. PERFORM ALL WORK SHOWN ON THIS PLAN SHEET IN THE PRESENCE OF THE ENGINEER.
5. ENCASE TAPPING SADDLE IN A MINIMUM OF 4,000 PSI LIGHTWEIGHT CONCRETE WITH A CURED DENSITY OF NO MORE THAN 115 POUNDS PER CUBIC FOOT AFTER HYDROSTATIC TESTING. USE TYPE III, 5,000 PSI CONCRETE FOR SUPPORT SLAB.
6. EXTEND CONCRETE ENCASEMENT A MINIMUM OF 12" AROUND TAPPING SADDLE, EXCEPT FOR UPPER FACE AS SHOWN TO PERMIT ASSEMBLY OF FLANGED JOINT. CONCRETE ENCASEMENT SHALL EXTEND A MINIMUM OF 6" BEYOND THE ENDS OF THE TAPPING SADDLE.

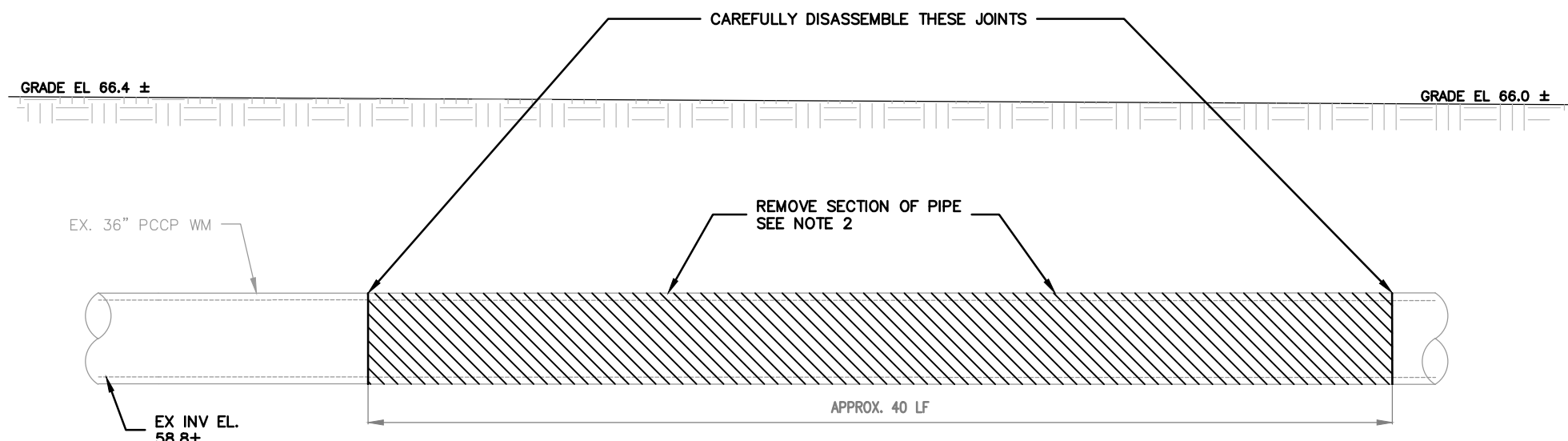
R E V I S I O N S			
DATE	DESCRIPTION	DATE	DESCRIPTION
8/16/24	ADDED SHEET		

Timothy R. Palmer, P.E.
PE LICENSE NUMBER 86681
WADE TRIM
201 North Franklin Street, Suite 1350
Tampa, FL 33602

STATE OF FLORIDA DEPARTMENT OF TRANSPORTATION		
ROAD NO.	COUNTY	FINANCIAL PROJECT ID
SR 55	PINELLAS	256774-2-56-01

PLAN
1217+40 TO 1223+00

SHEET NO.
U-7A

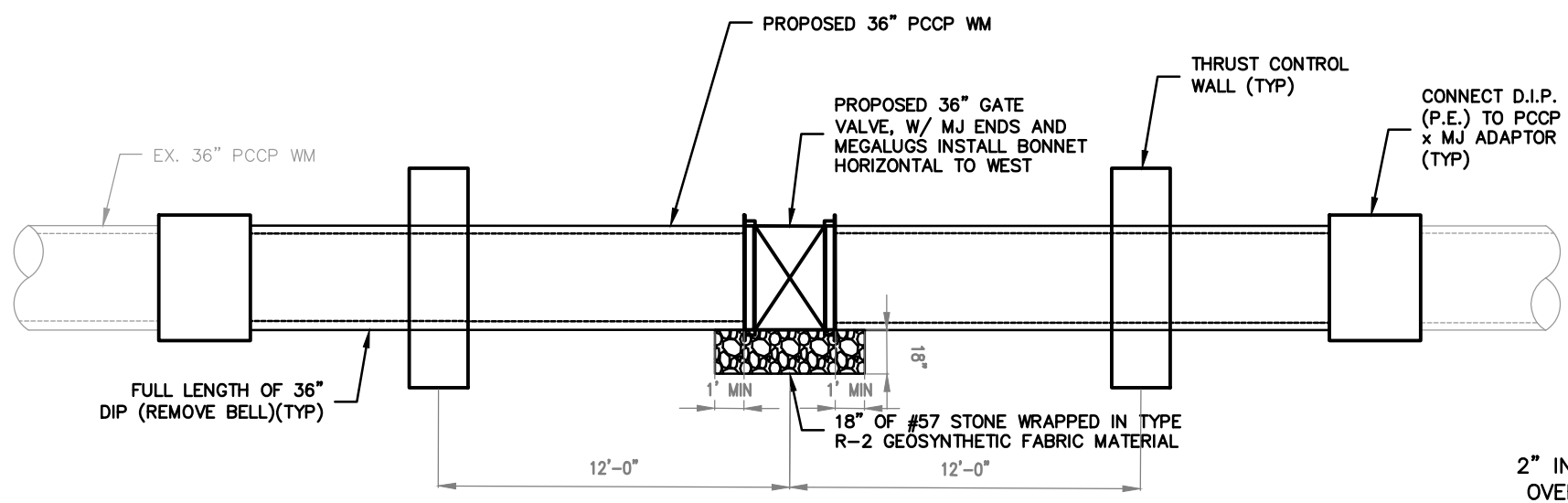


NOTES:
1. RESTRAIN ALL NEW JOINTS.

EXISTING SECTION

SCALE: 1"=6'-0"

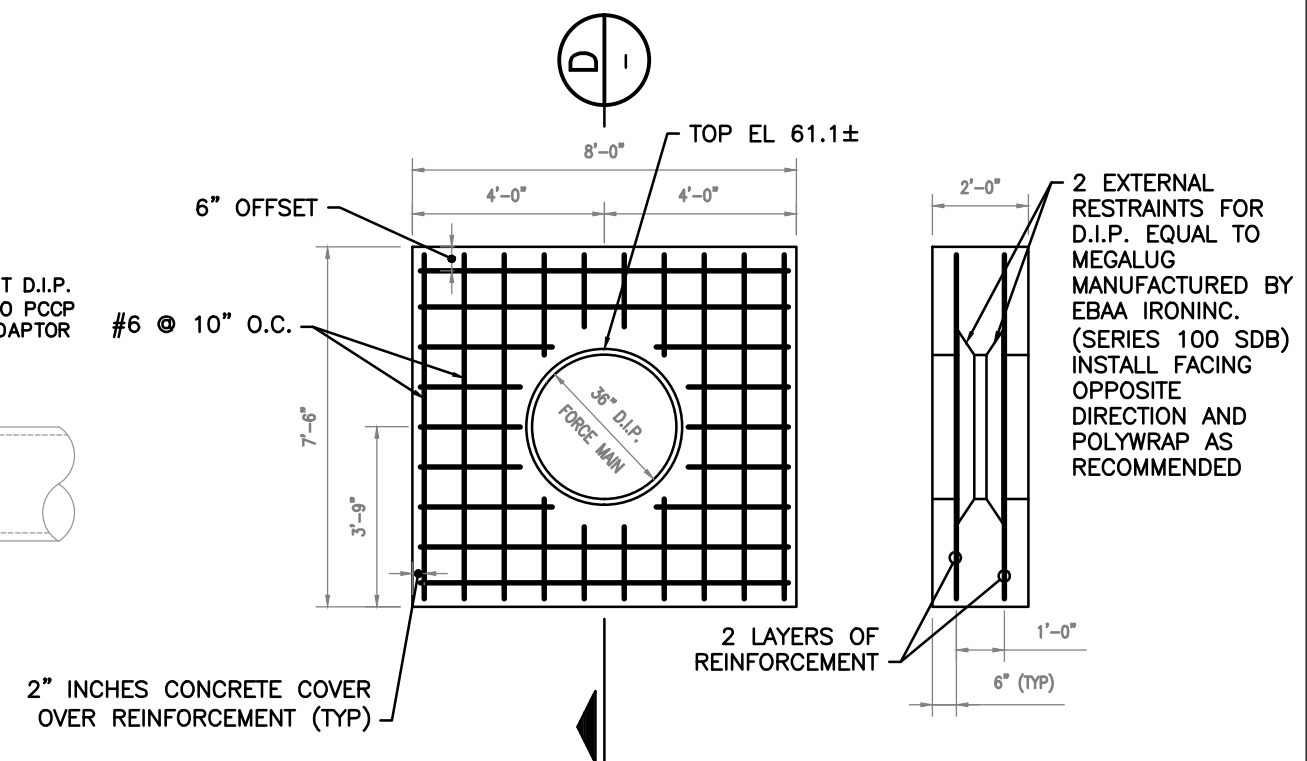
B.1
U-7A



PROPOSED SECTION

SCALE: 1"=6'-0"

B.2
U-7A

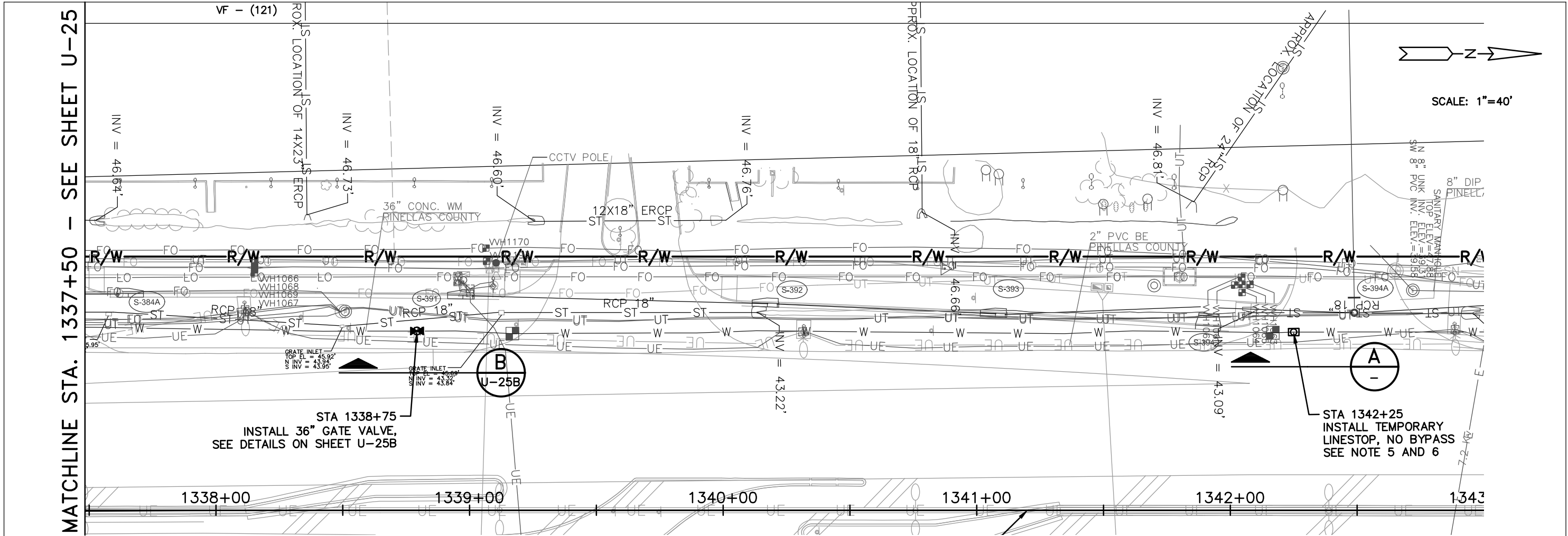


- NOTES:
- 1. USE 3,000 PSI CONCRETE MIN. AT 7 DAYS CURE.
 - 2. THOROUGHLY COMPACT SOIL BOTH SIDES OF DEADMAN IN 6 INCH LIFTS.

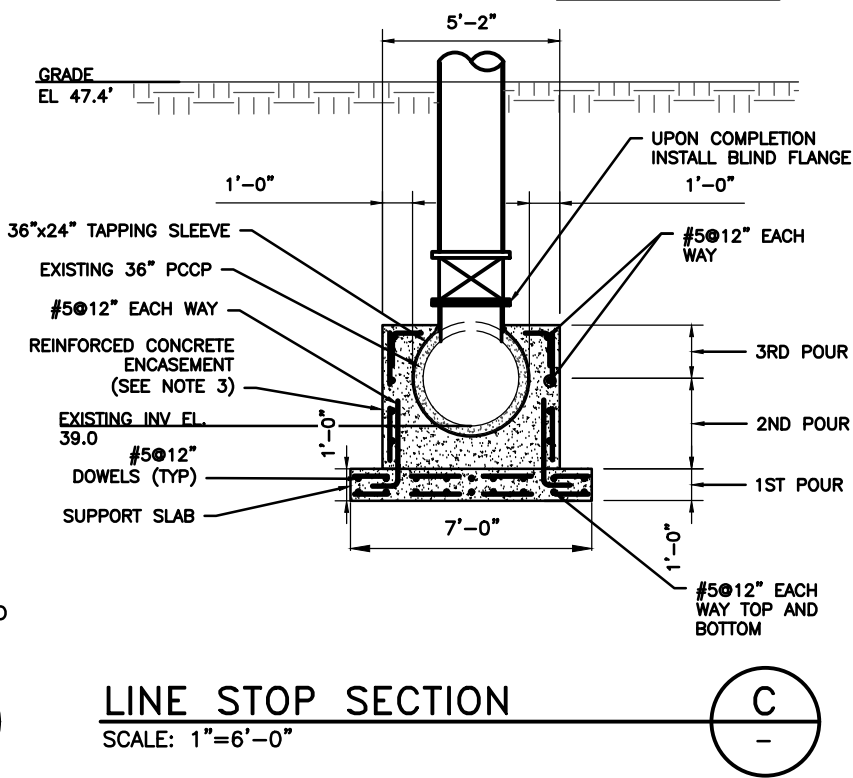
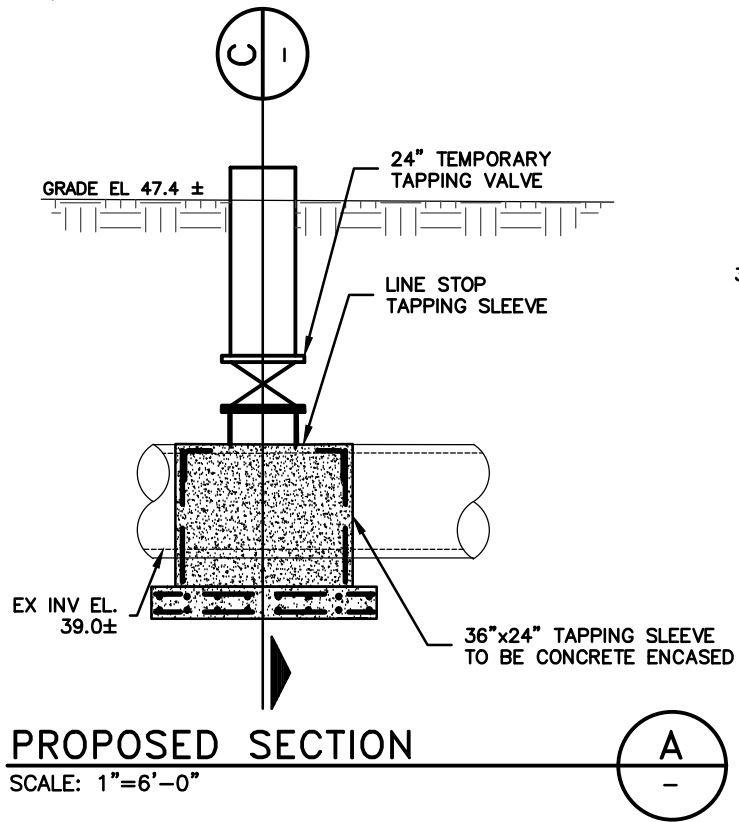
THRUST WALL DETAIL

SCALE: 1/4" = 1'-0"

R E V I S I O N S				Timothy R. Palmer, P.E. PE LICENSE NUMBER 86681 WADE TRIM 201 North Franklin Street, Suite 1350 Tampa, FL 33602	STATE OF FLORIDA DEPARTMENT OF TRANSPORTATION			ADDITIONAL 36" VALVE SECTIONS	SHEET NO.	
DATE	DESCRIPTION		DATE		DESCRIPTION		ROAD NO.		COUNTY	FINANCIAL PROJECT ID
8/16/24	△ ADDED SHEET						SR 55		PINELLAS	256774-2-56-01
White, John 8/16/2024 5:08:43 PM C:\pw_work\inwhite\d0918958\CSP-PLTS-PIN2022 PLAN SHEETS.dwg										



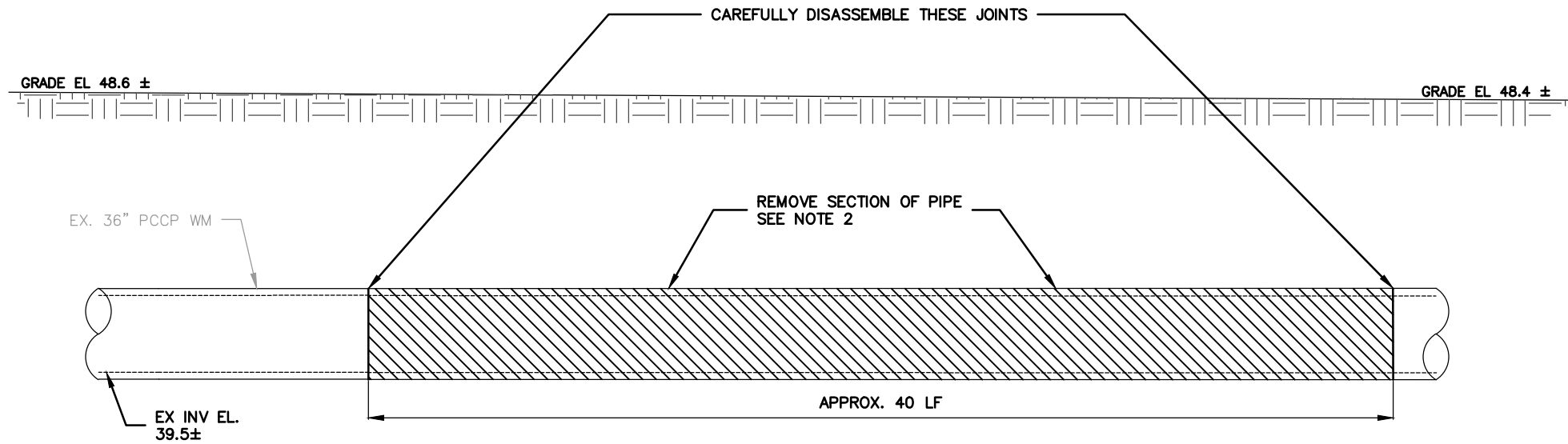
PLAN VIEW



NOTES:

1. LOCATE PIPE JOINTS IN FIELD AND INSTALL LINESTOP ON FULL LENGTH PIPE SEGMENT CENTERED BETWEEN JOINTS. COORDINATE LINESTOP INSERTION AND PIPE ISOLATION WITH PINELLAS COUNTY UTILITIES AND THE ENGINEER.
2. DISTANCE FROM LINESTOP ASSEMBLY TO THE SOUTHERNMOST REMOVED PIPE SEGMENT MUST BE A MINIMUM OF 300 LINEAR FEET.
3. PROVIDE ADEQUATE TEMPORARY SUPPORT TO EXISTING PIPE WHILE THE NEW SUPPORT SLAB IS BEING CONSTRUCTED. SUBMIT SHOP DRAWINGS INDICATING INSTALLATION PROCEDURES FOR APPROVAL PRIOR TO INITIATING THE WORK.
4. PERFORM ALL WORK SHOWN ON THIS PLAN SHEET IN THE PRESENCE OF THE ENGINEER.
5. ENCASE TAPPING SADDLE IN A MINIMUM OF 4,000 PSI LIGHTWEIGHT CONCRETE WITH A CURED DENSITY OF NO MORE THAN 115 POUNDS PER CUBIC FOOT AFTER HYDROSTATIC TESTING. USE TYPE III, 5,000 PSI CONCRETE FOR SUPPORT SLAB.
6. EXTEND CONCRETE ENCASEMENT A MINIMUM OF 12" AROUND TAPPING SADDLE, EXCEPT FOR UPPER FACE AS SHOWN TO PERMIT ASSEMBLY OF FLANGED JOINT. CONCRETE ENCASEMENT SHALL EXTEND A MINIMUM OF 6" BEYOND THE ENDS OF THE TAPPING SADDLE.

REVISIONS				Timothy R. Palmer, P.E. PE License Number 86681 WADE TRIM 201 North Franklin Street, Suite 1350 Tampa, FL 33602	STATE OF FLORIDA DEPARTMENT OF TRANSPORTATION			PLAN STA 1335+34 TO STA 1342+90	SHEET NO. U-25A
DATE	DESCRIPTION	DATE	DESCRIPTION		ROAD NO.	COUNTY	FINANCIAL PROJECT ID		
8/16/24	ADDITIONAL SHEET				SR 55	PINELLAS	256774-3-56-01		

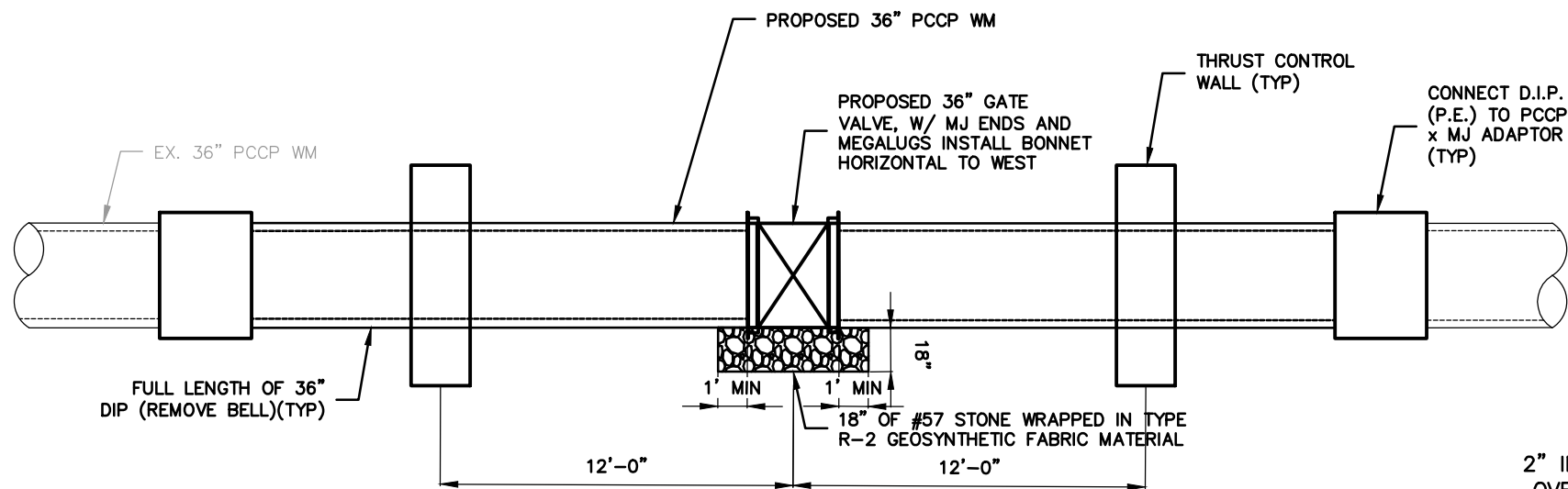


NOTES:
1. RESTRAIN ALL NEW JOINTS.

EXISTING SECTION

SCALE: 1"=6'-0"

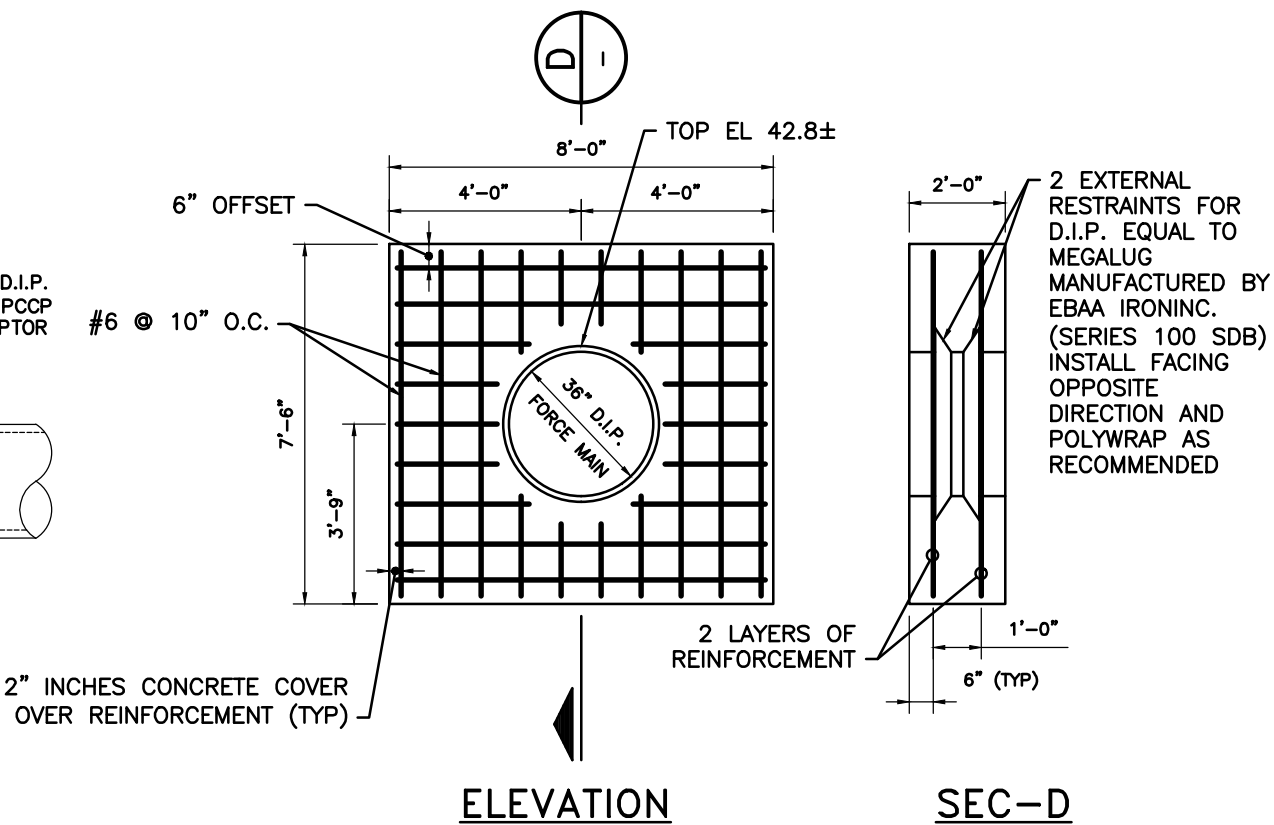
B.1
U-25A



PROPOSED SECTION

SCALE: 1"=6'-0"

B.2
U-25A



NOTES:
1. USE 3,000 PSI CONCRETE MIN. AT 7 DAYS CURE.
2. THOROUGHLY COMPACT SOIL BOTH SIDES OF DEADMAN IN 6 INCH LIFTS.

THRUST WALL DETAIL

SCALE: 1/4" = 1'-0"

REVISIONS				Timothy R. Palmer, P.E. PE License Number 86681 WADE TRIM 201 North Franklin Street, Suite 1350 Tampa, FL 33602	STATE OF FLORIDA DEPARTMENT OF TRANSPORTATION			ADDITIONAL 36" VALVE SECTIONS	SHEET NO. U-25B
DATE	DESCRIPTION	DATE	DESCRIPTION		ROAD NO.	COUNTY	FINANCIAL PROJECT ID		
8/16/24	ADDED SHEET				SR 55	PINELLAS	256774-3-56-01		