



**FORWARD  
PINELLAS**  
Integrating Land Use & Transportation

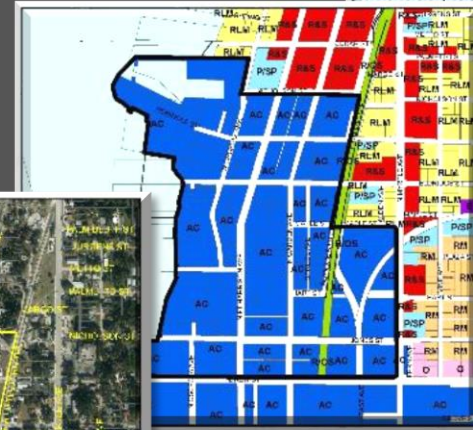
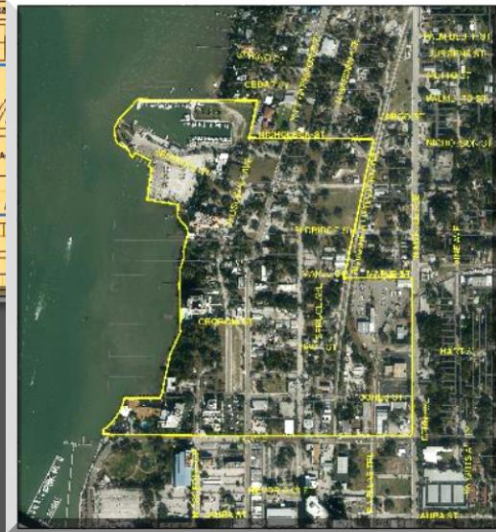
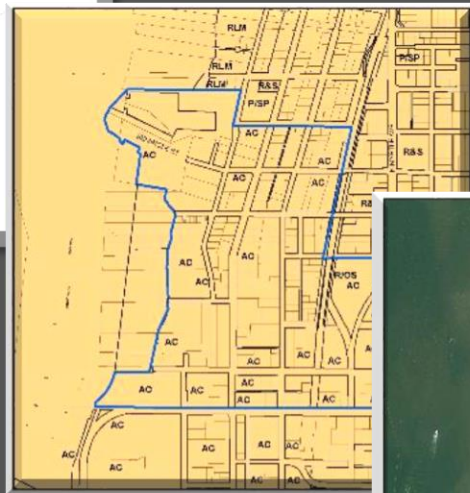
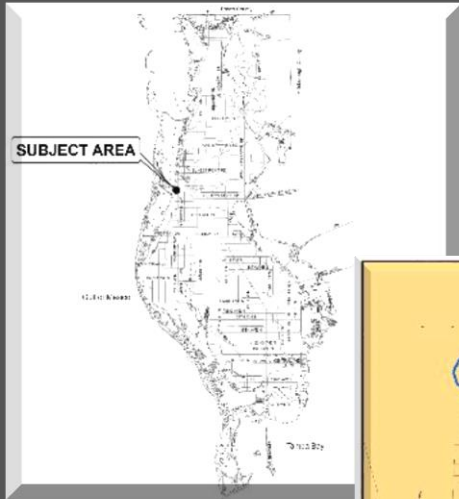
# Countywide Planning Authority Countywide Plan Map Amendment

Case CW01-25 (Change No. 9-2016)

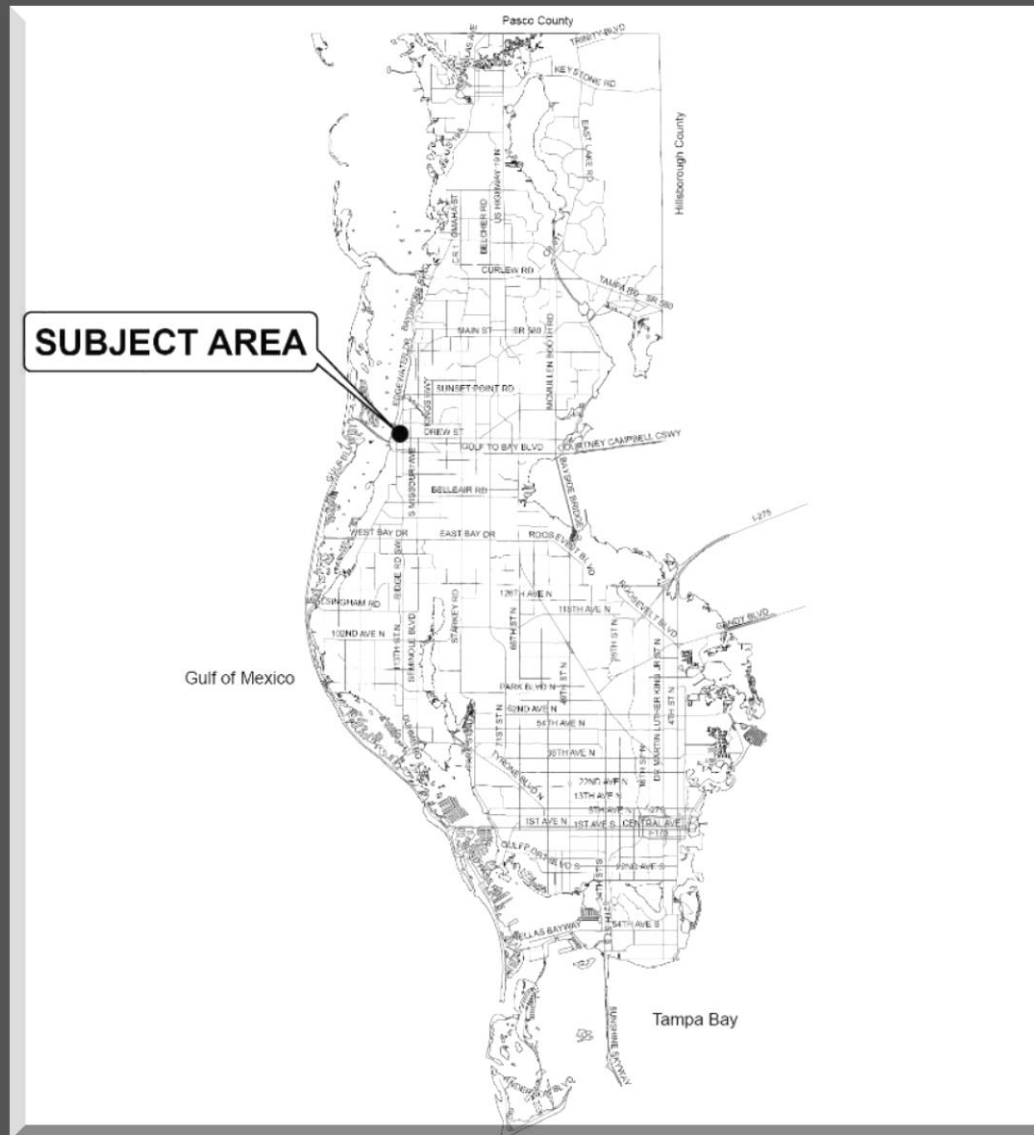
City of Clearwater

August 9, 2016

# Location, Aerial, and Other Mapping



# General Location



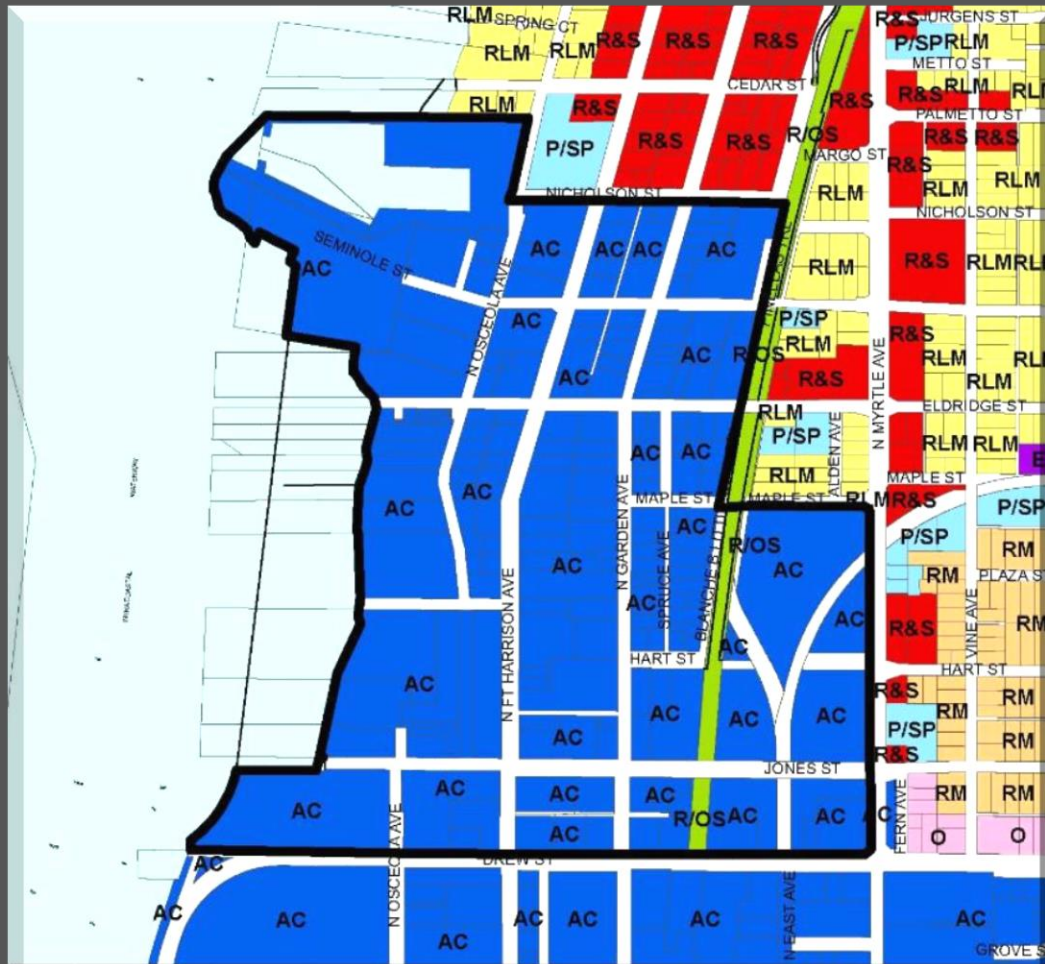
# Site Map







# Current and Proposed Categories



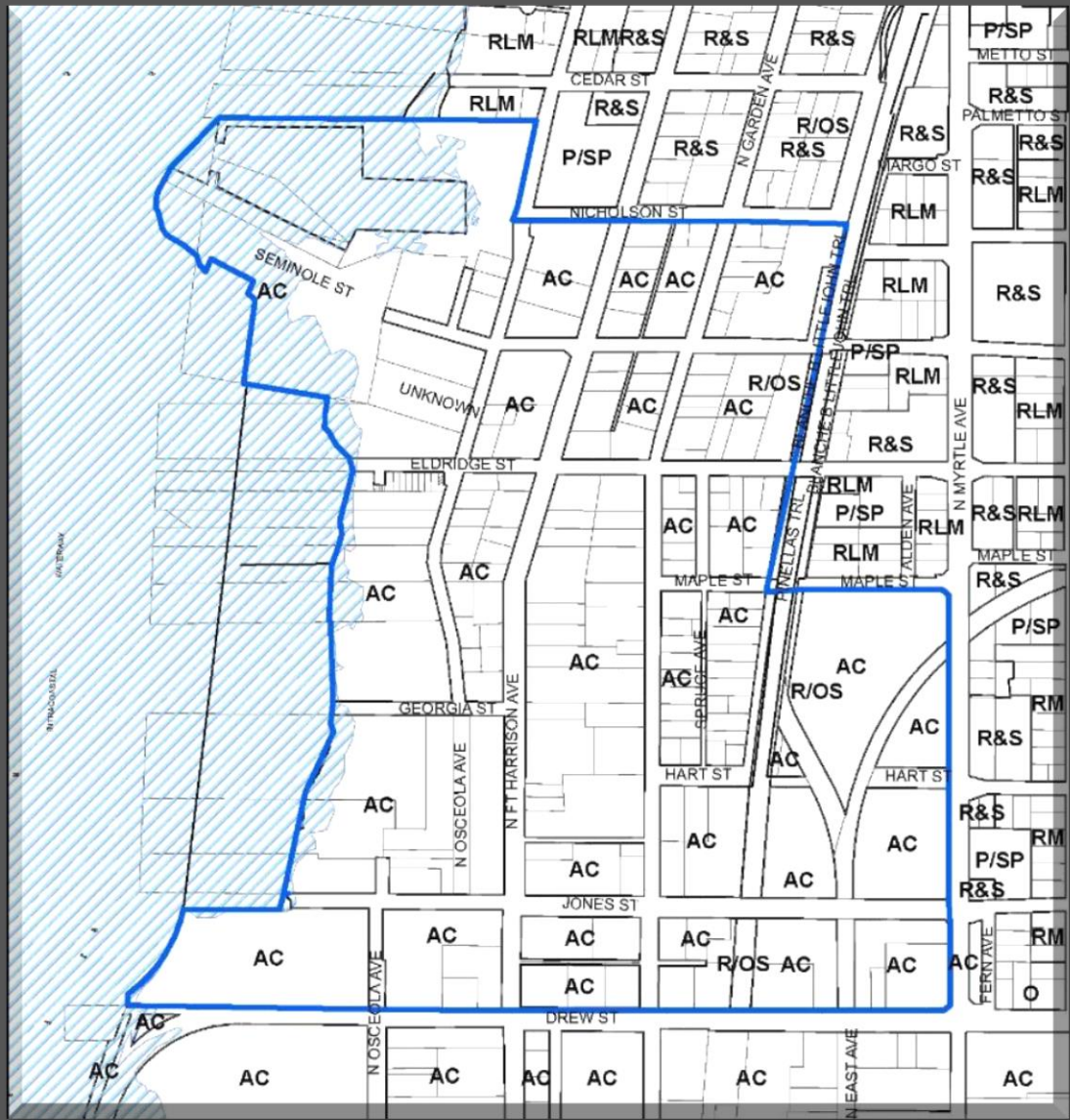
## Plan Map Categories

- |                        |                    |                       |
|------------------------|--------------------|-----------------------|
| Residential Low Medium | Retail & Services  | Recreation/Open Space |
| Residential Medium     | Employment         | Activity Center       |
| Office                 | Public/Semi-Public |                       |





# Coastal High Hazard Areas (CHHA)



# Vacant Lot on Seminole St. and N. Osceola Ave.





# Closed School North of Old Bay Character District



# Property on Seminole Street





# City Marina on west end of Seminole Street





# Southeast of Seminole St. and N. Garden Ave.



# Findings and Recommendation

- Staff recommends approval.
- Consistent with the Countywide Rules, and reviewed against the Countywide Considerations:
  - Consistent with the utilization of this category; and
  - Will not significantly impact other Countywide Considerations.

