

## REVIEW YOUR PRICES

Prices and delivery times are subject to review by One Point Partitions.

### POWDER COATED STEEL

**\$2,277.00**

3 year warranty

Price includes materials, hardware and delivery to zip code 34683. See the following layouts.

**Delivered in 4-6 business days**



Videos Colors

### LAMINATE

**\$2,734.00**

5 year warranty

Price includes materials, hardware and delivery to zip code 34683. See the following layouts.

**Delivered in 4-6 business days**



Videos Colors

### SOLID PLASTIC

**\$3,749.00**

25 year warranty

Price includes materials, hardware and delivery to zip code 34683. See the following layouts.

**Delivered in 4-6 business days**



Videos Colors

### PHENOLIC BLACK CORE

**\$4,414.00**

25 year warranty

Price includes materials, hardware and delivery to zip code 34683. See the following layouts.

**Delivered in 4-6 business days**



Videos Colors

### STAINLESS STEEL

**\$4,392.00**

5 year warranty

Price includes materials, hardware and delivery to zip code 34683. See the following layouts.

**Delivered in 4-6 business days**



Videos Colors

**Good news! This quote includes all rooms. See the following pages for those room layouts.**

**All doors, panels, pilaster, screws, brackets, and anchors for a typical install are included.**

**Delivery from our local terminal to anywhere within your specified zip code is also included.**

# REVIEW YOUR LAYOUTS

Job #229800.1 Date: 02/12/21

## ROOM #1 - Untitled

3 Stalls, 0 Urinal Screens

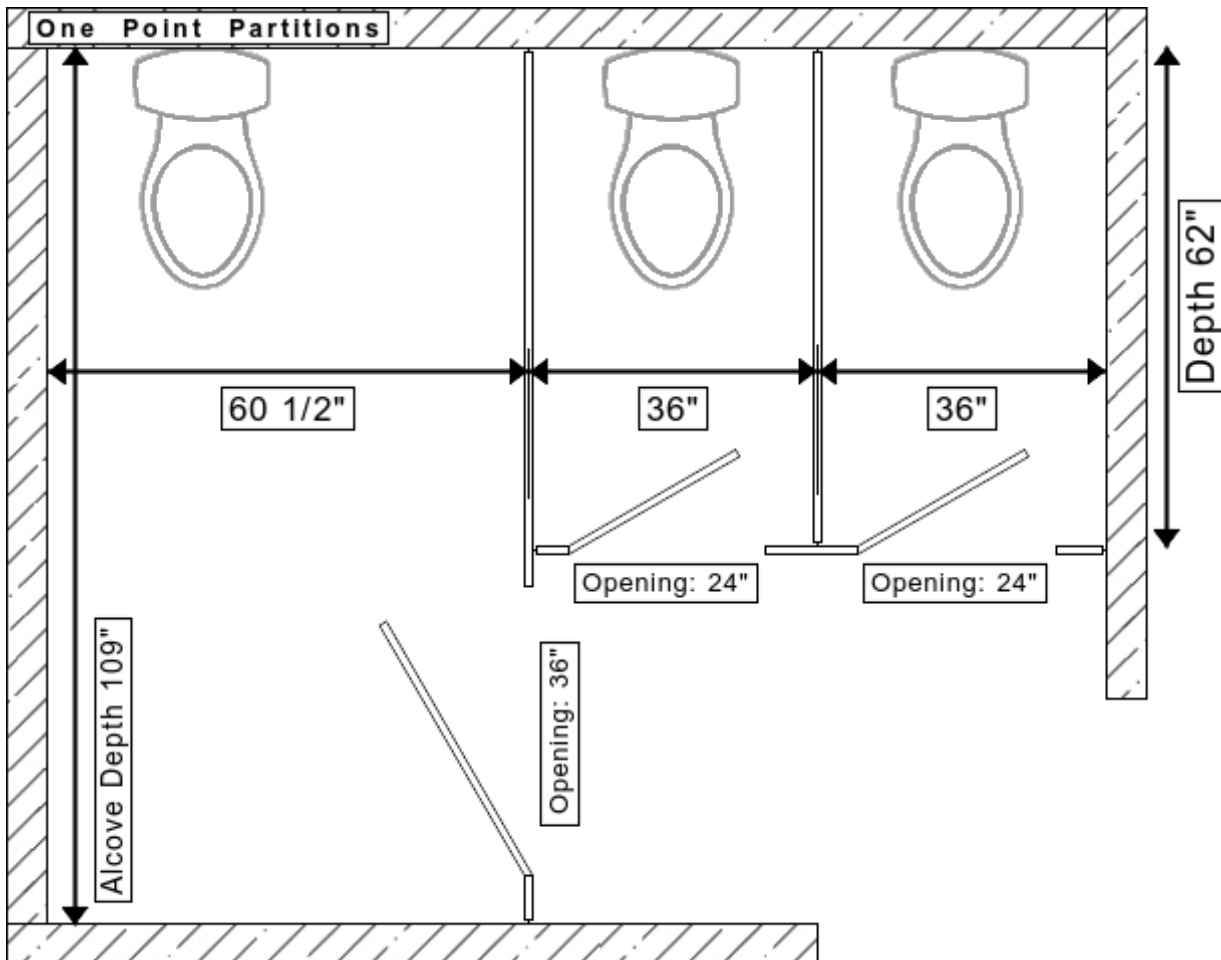
Layout: Alcove Closed, ADA, Left

Partition Depth: 62"

Stall 1 - Alcove Depth: 109"; Width: 60 1/2"; Door: 36", Left In.

Stall 2 - Width: 36"; Door: 24", Left In.

Stall 3 - Width: 36"; Door: 24", Left In.



Stall widths are to the centerline. Stall depths are to the face. Alcove depths are wall to wall.

Need this layout bigger or smaller? No problem! Our Partition Experts will design it to fit your restroom.

**This layout is included in the price.**

**ROOM #2 - Untitled**

2 Stalls, 1 Urinal Screen

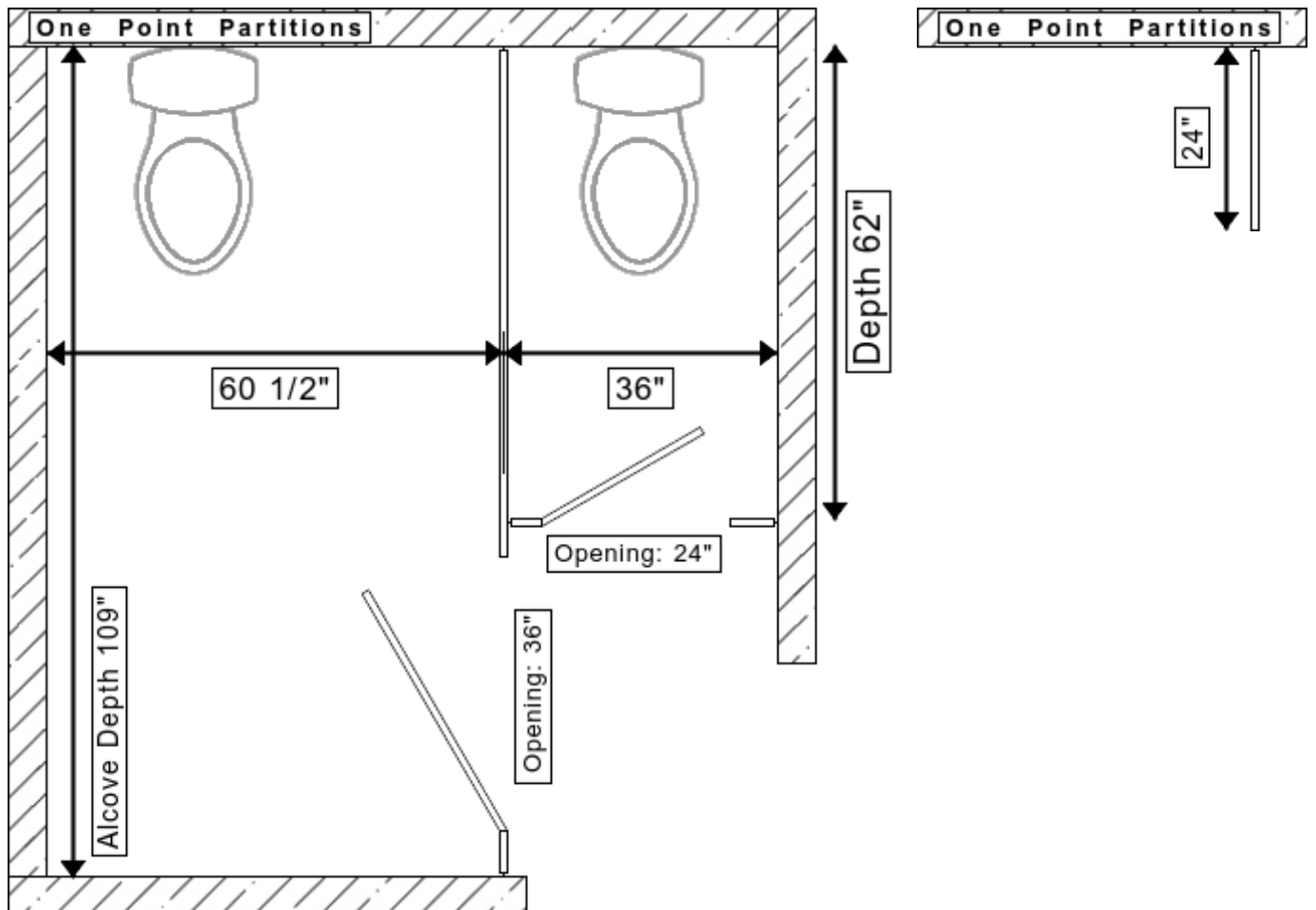
Layout: Alcove Closed, ADA, Left

Partition Depth: 62"

Stall 1 - Alcove Depth: 109"; Width: 60 1/2"; Door: 36", Left In.

Stall 2 - Width: 36"; Door: 24", Left In.

Urinal Screen Depths: 24"



Stall widths are to the centerline. Stall depths are to the face. Alcove depths are wall to wall.

Need this layout bigger or smaller? No problem! Our Partition Experts will design it to fit your restroom.

**This layout is included in the price.**

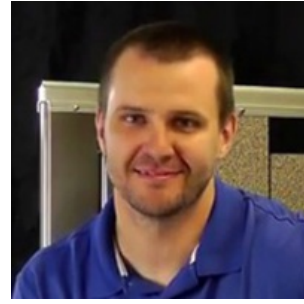
Meet the One Point Partition Experts



Andy Hughes



Jason Hughes



Brandon Graham



Brock Hutson



Jhoana Soriano

We're available to talk about your quote, so give us a call at **800.756.6817** or email [sales@onepointpartitions.com](mailto:sales@onepointpartitions.com) to finalize your drawings and help you purchase your partitions. (Prices and lead times are subject to review by OPP.)