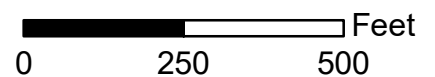


**JURISDICTION:** Pinellas County **FROM:** Residential Low Medium

**AREA:** 0.71 Acres

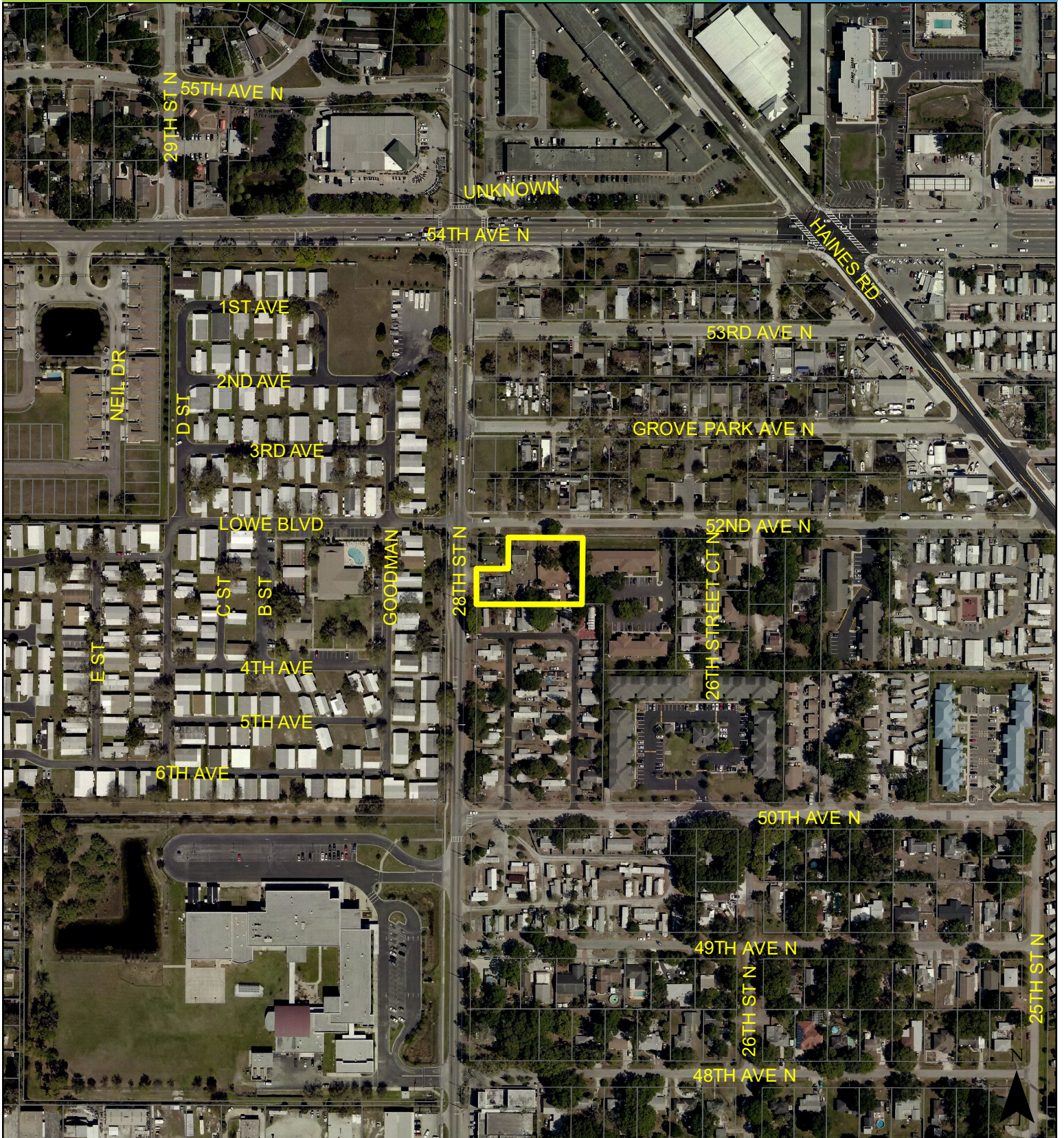
**TO:** Residential Medium





# Case CW22-05

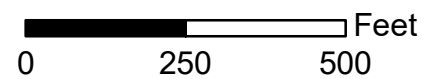
## Map 3: Aerial Map



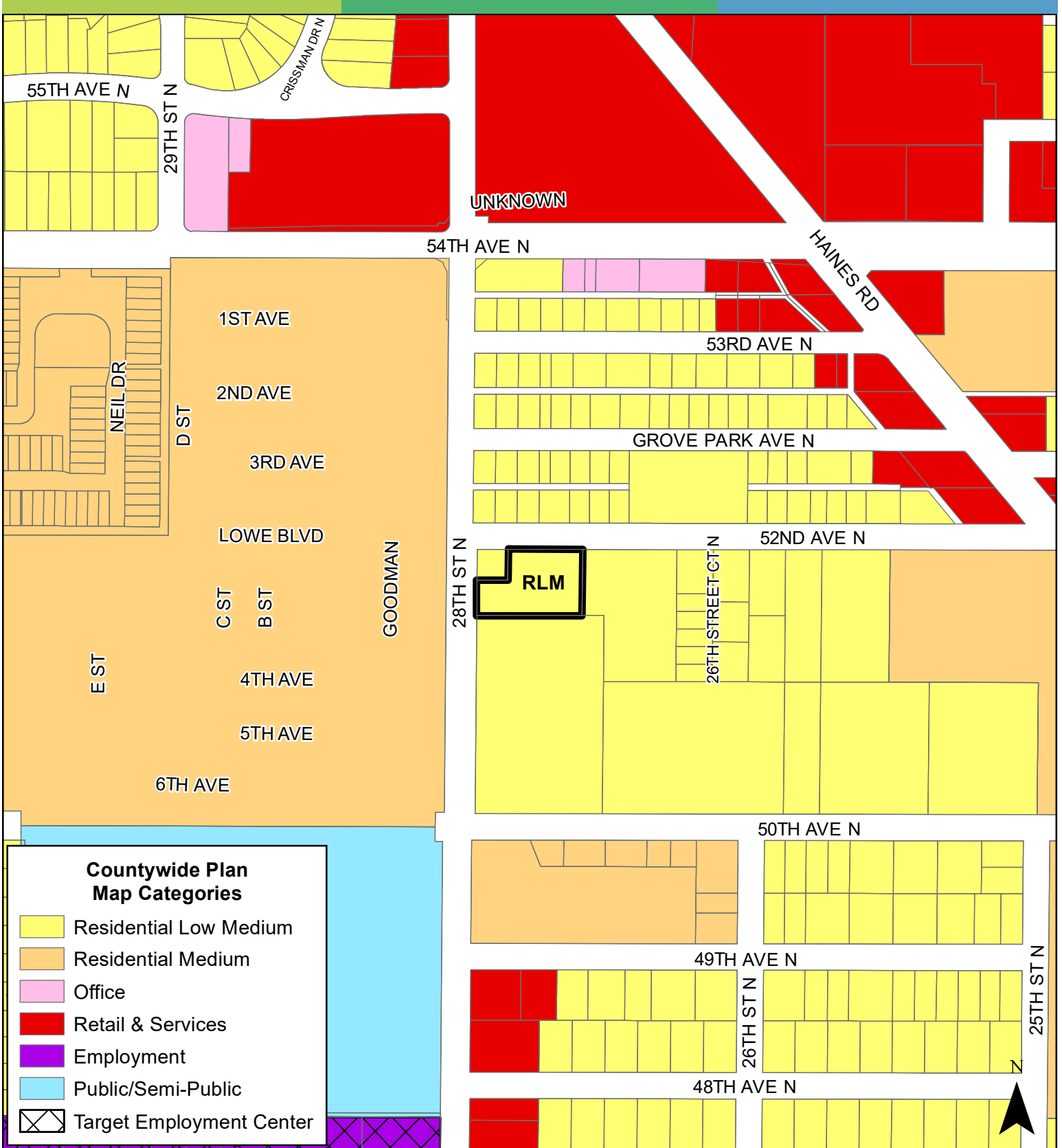
**JURISDICTION:** Pinellas County **FROM:** Residential Low Medium

**AREA:** 0.71 Acres

**TO:** Residential Medium



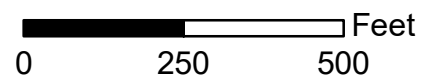


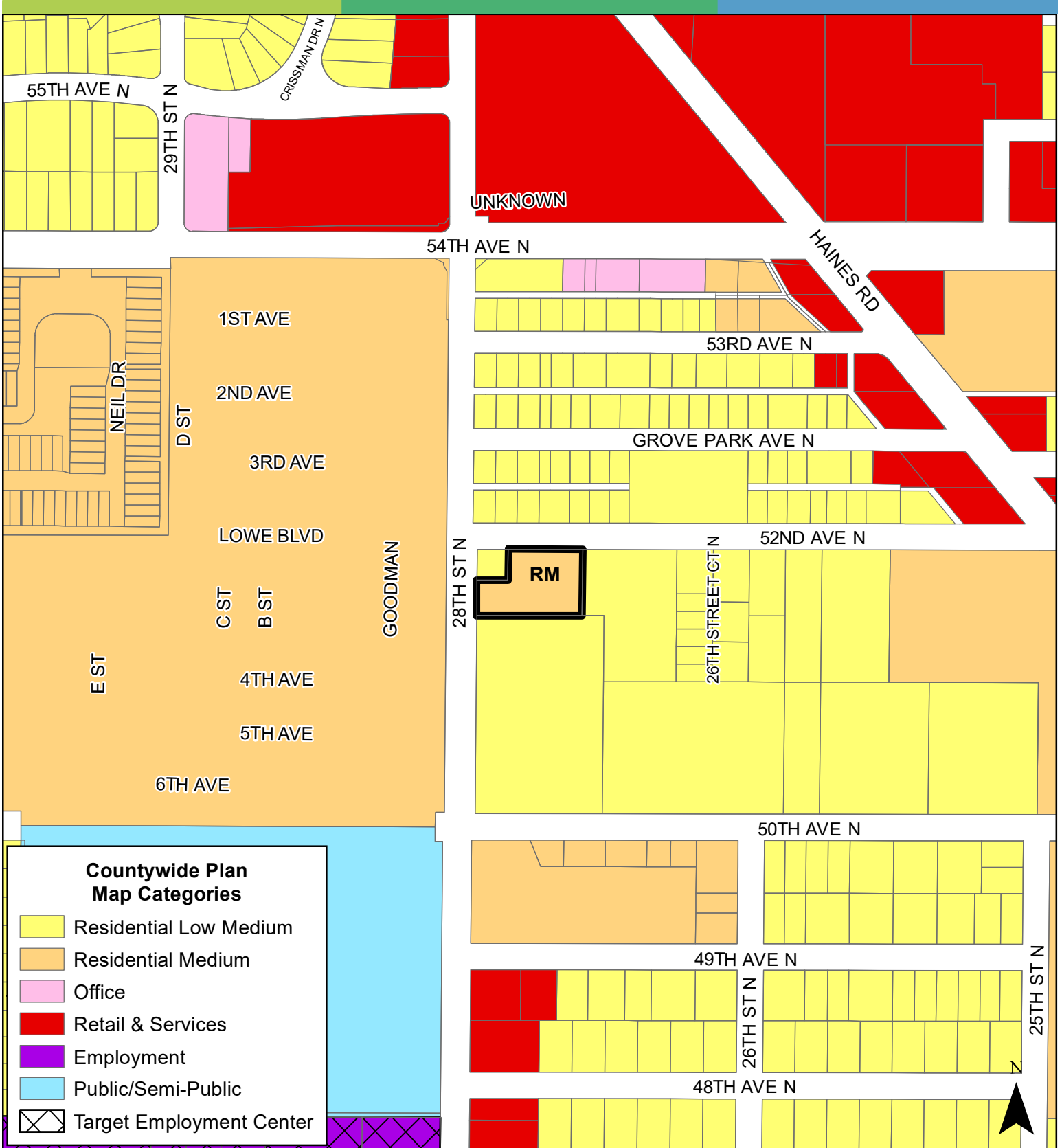


**JURISDICTION:** Pinellas County **FROM:** Residential Low Medium

**AREA:** 0.71 Acres

**TO:** Residential Medium





**JURISDICTION:** Pinellas County **FROM:** Residential Low Medium

**AREA:** 0.71 Acres

**TO:** Residential Medium

