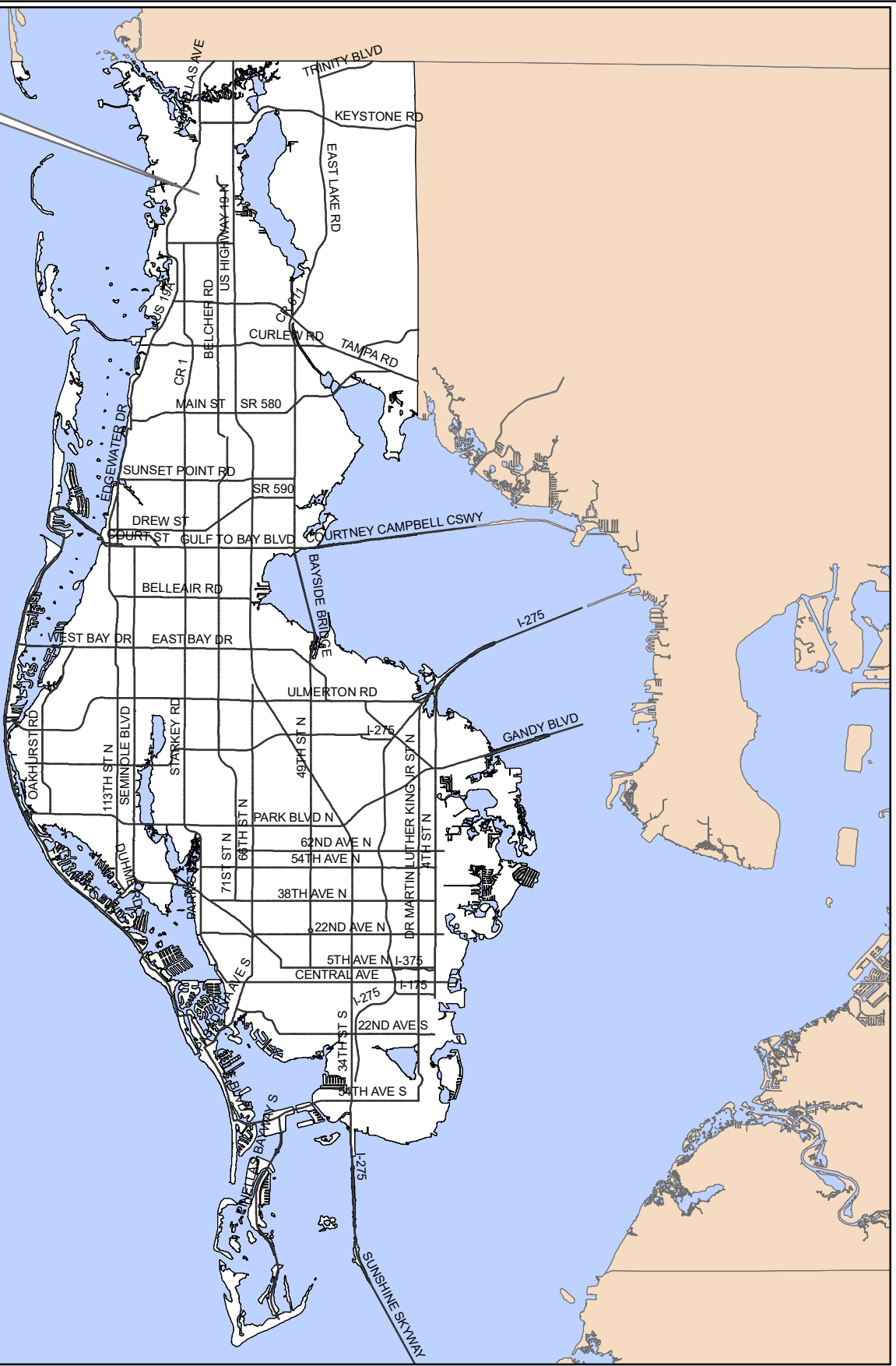


FLU-21-06



**FLU-21-06**

**Location Map**

**From:** Residential Suburban, Recreation/Open Space,  
Residential Estate, Residential Low Medium  
**Land Use**  
**To:** Residential Low, Recreation/Open Space



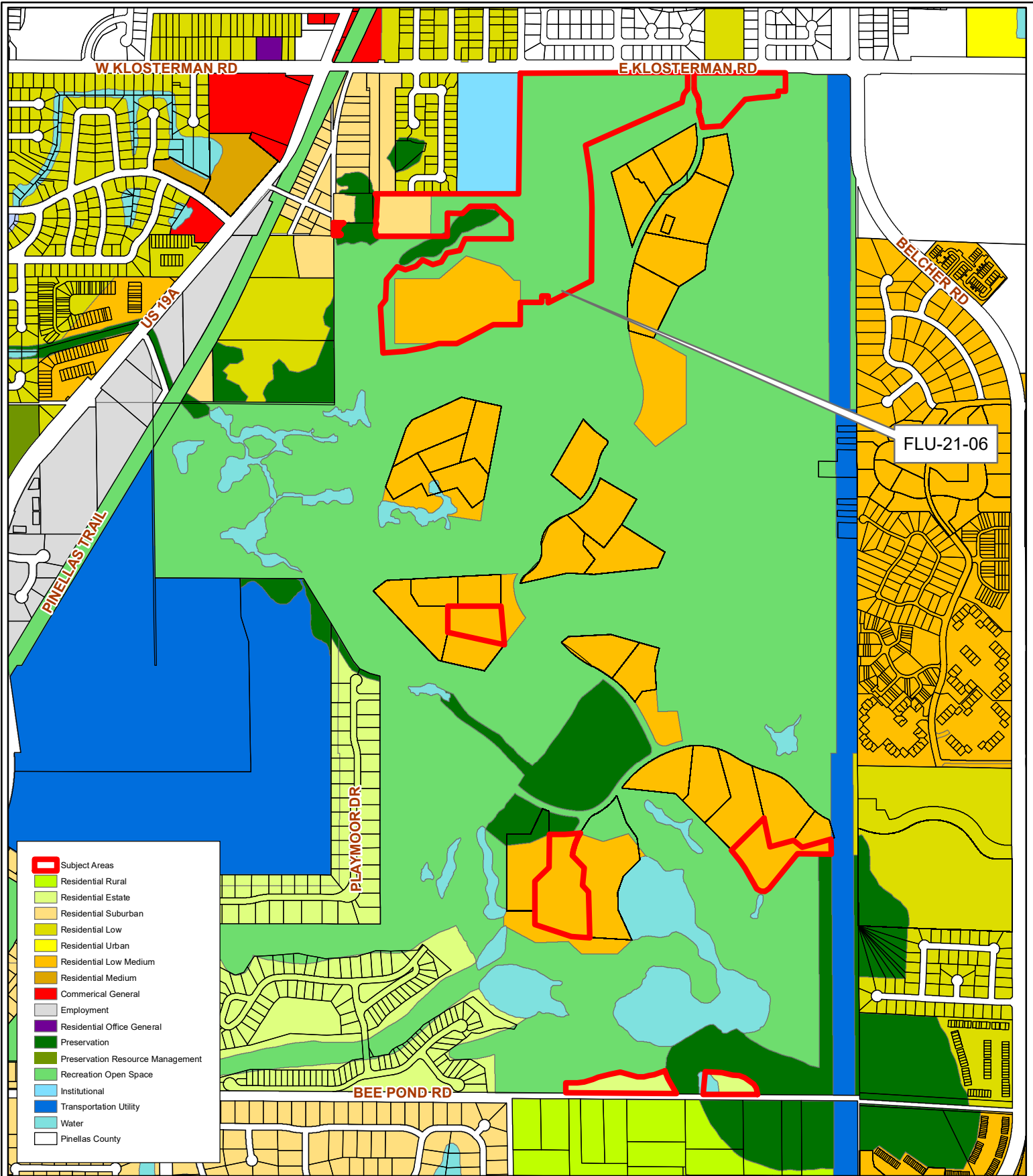
25/27/15/00000/100/0100

Prepared by: Housing & Community Development Department



Date: 3/14/2022

1 inch = 4.5 miles



- ▭ Subject Areas
- ▭ Residential Rural
- ▭ Residential Estate
- ▭ Residential Suburban
- ▭ Residential Low
- ▭ Residential Urban
- ▭ Residential Low Medium
- ▭ Residential Medium
- ▭ Commercial General
- ▭ Employment
- ▭ Residential Office General
- ▭ Preservation
- ▭ Preservation Resource Management
- ▭ Recreation Open Space
- ▭ Institutional
- ▭ Transportation Utility
- ▭ Water
- Pinellas County

**FLU-21-06**  
**Current Land Use**

**From:** Residential Suburban, Recreation/Open Space,  
 Residential Estate, Residential Low Medium  
**Land Use**  
**To:** Residential Low, Recreation/Open Space



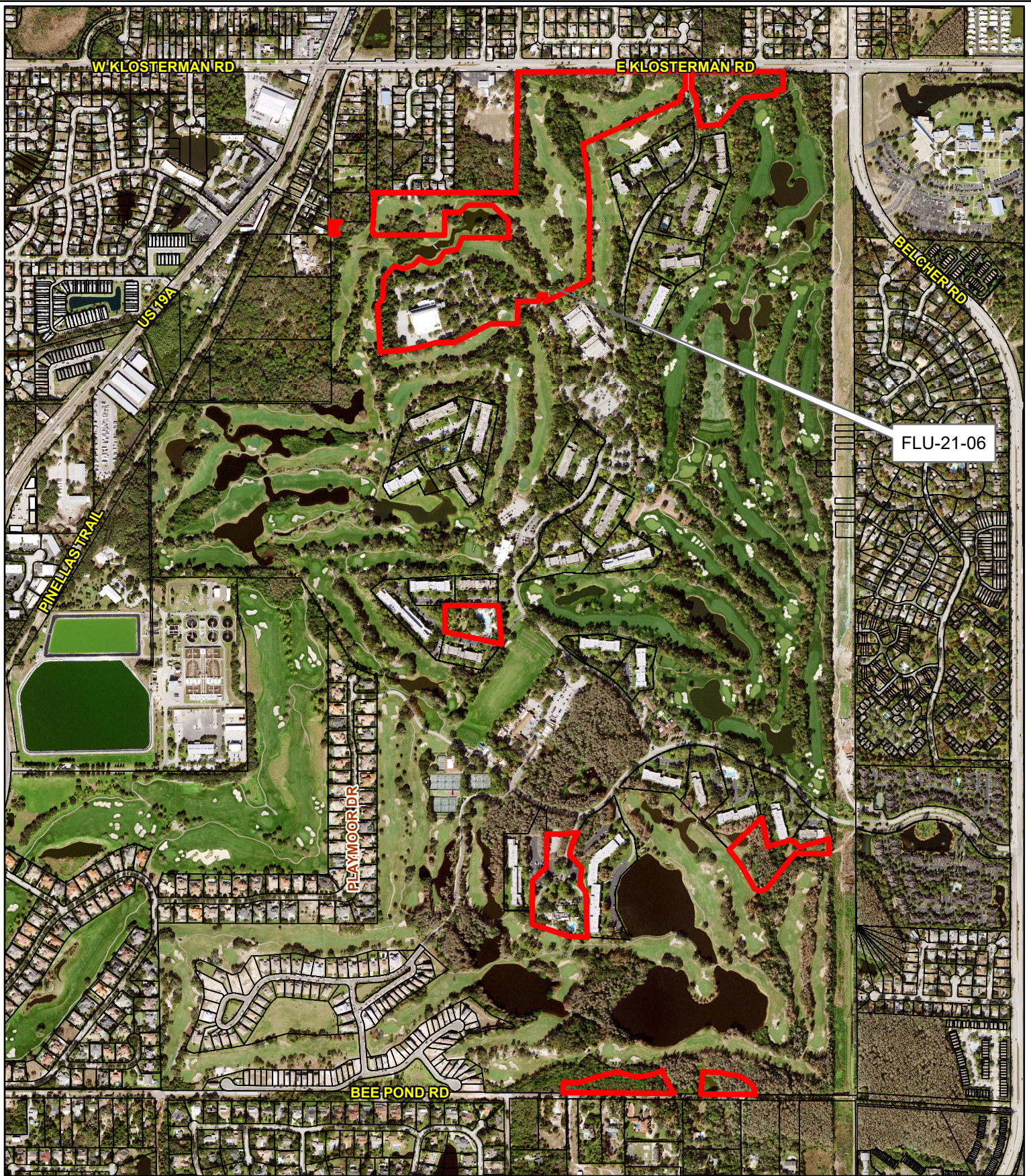
25/27/15/00000/100/0100

Prepared by: Housing & Community Development Department



Date: 3/14/2022

1 inch = 0.19 miles



**FLU-21-06**

**Aerial Map**

**From:** Residential Suburban, Recreation/Open Space,  
Residential Estate, Residential Low Medium  
**Land Use**  
**To:** Residential Low, Recreation/Open Space

25/27/15/00000/100/0100

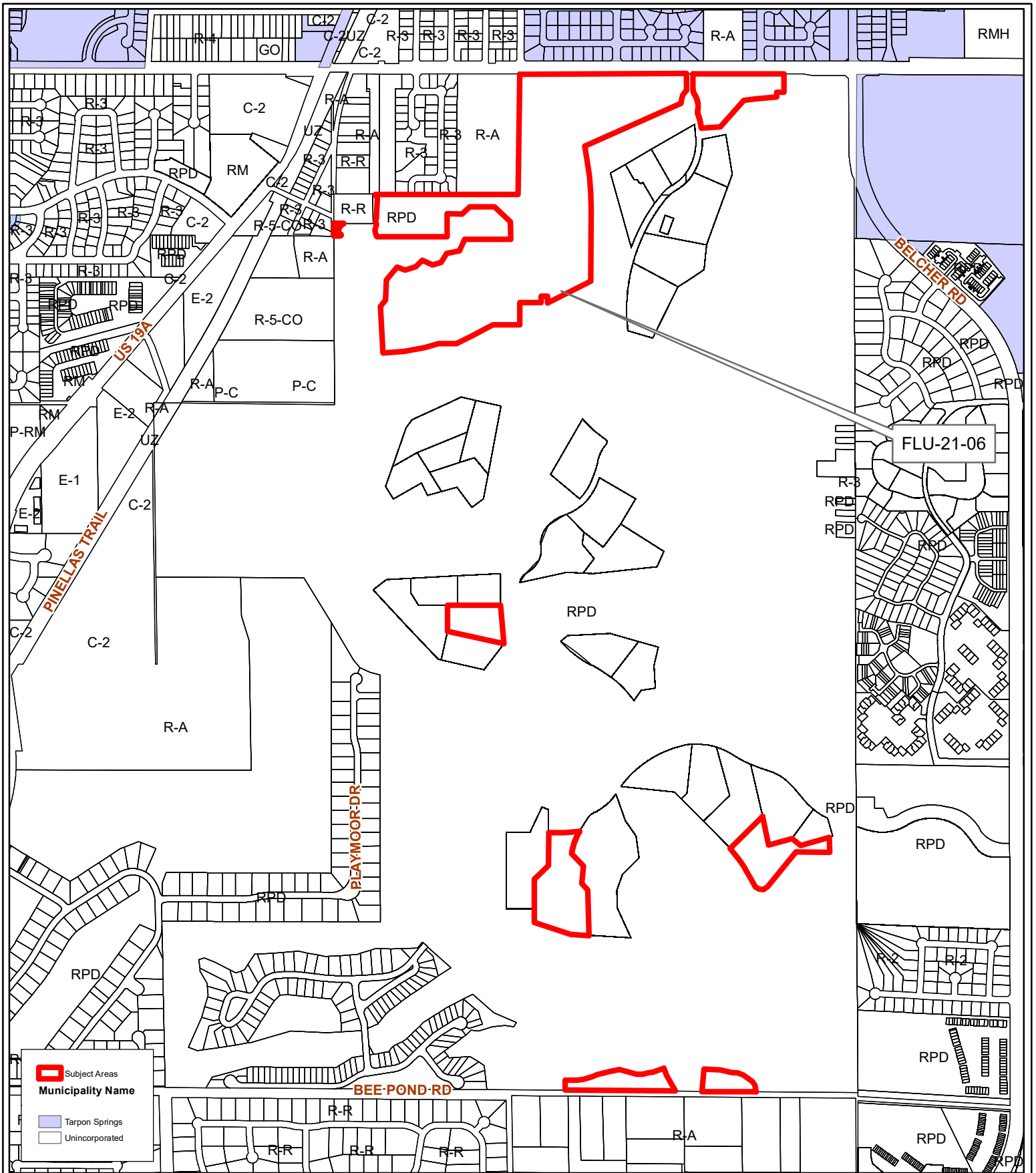
Prepared by: Housing & Community Development Department



Date: 3/14/2022



1 inch = 0.19 miles



**FLU-21-06**

**Municipal Map**

**From:** Residential Suburban, Recreation/Open Space,  
Residential Estate, Residential Low Medium  
**Land Use**  
**To:** Residential Low, Recreation/Open Space

25/27/15/00000/100/0100

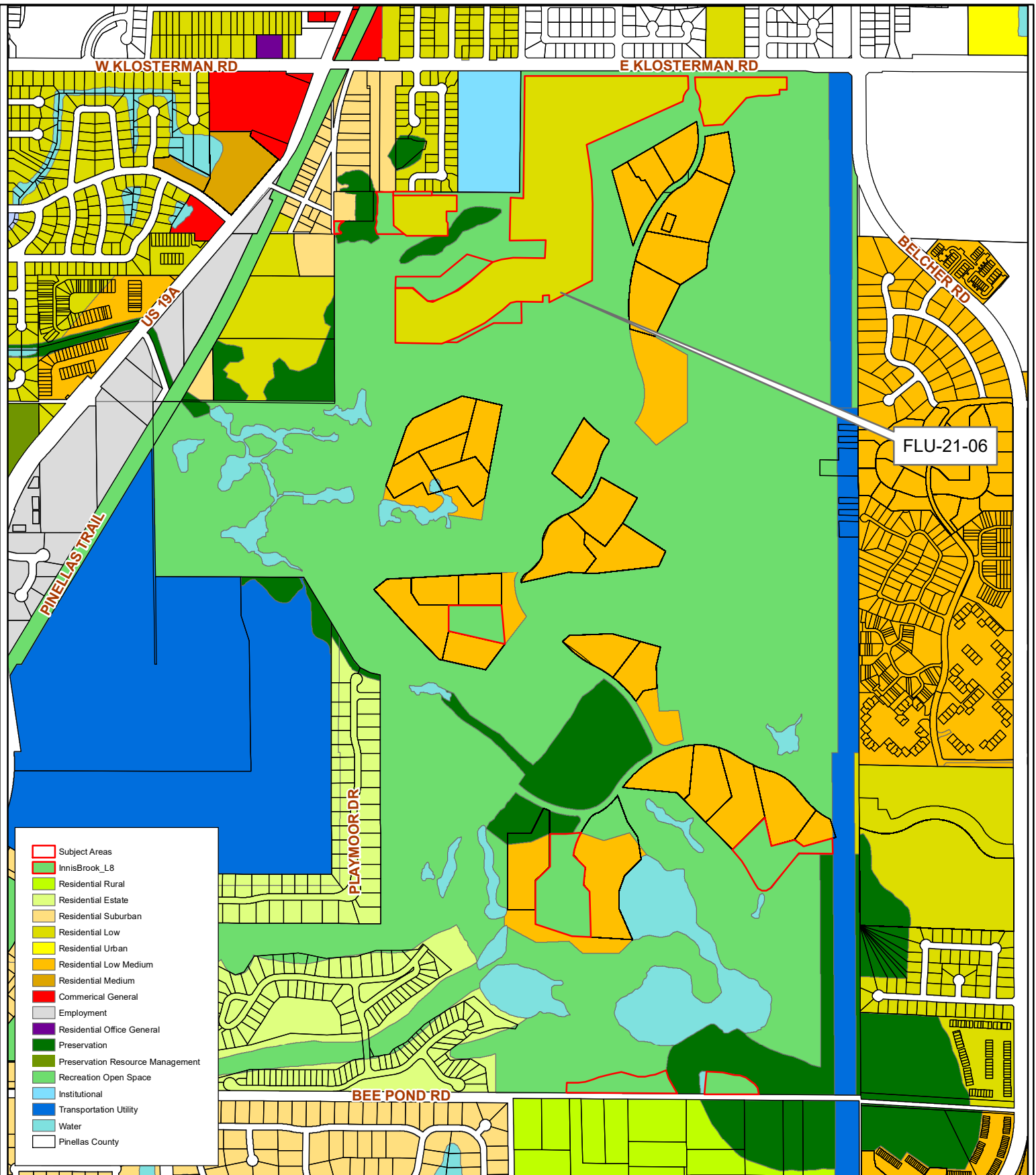
Prepared by: Housing & Community Development Department



Date: 3/14/2022



1 inch = 0.19 miles



FLU-21-06

**FLU-21-06**

**From:** Residential Suburban, Recreation/Open Space,  
Residential Estate, Residential Low Medium

**Proposed Land Use**

**To:** Residential Low, Recreation/Open Space

25/27/15/00000/100/0100

Prepared by: Housing & Community Development Department



Date: 3/29/2022



1 inch = 0.19 miles