

**Z-10-06-17**  
**LOCATION MAP**

**Zoning From:** C-1, Neighborhood Commercial  
**To:** C-2, General Retail Commercial & Limited Services  
 Development Agreement limiting the use to a restaurant with the option of a drive-thru, as well as other requirements and limitations (See staff report for details).



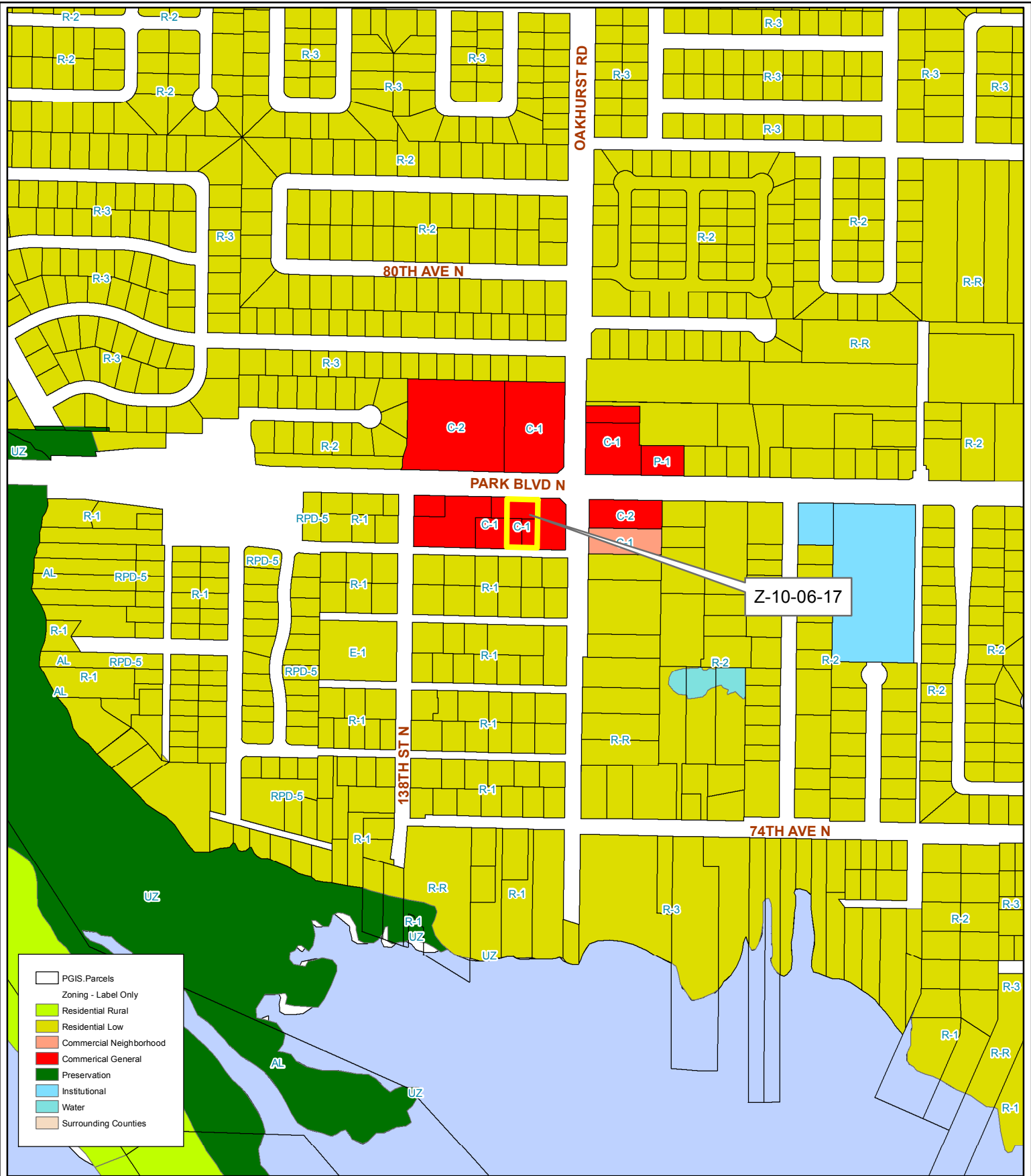
30/30/15/36486/000/1590, 1540, 1530

Prepared by: Pinellas County Planning Department



Date: 05/10/2017

1 inch = 4.5 miles



- PGIS Parcels
- Zoning - Label Only
- Residential Rural
- Residential Low
- Commercial Neighborhood
- Commercial General
- Preservation
- Institutional
- Water
- Surrounding Counties

**Z-10-06-17**  
**CURRENT ZONING MAP**

**Zoning From:** C-1, Neighborhood Commercial  
**To:** C-2, General Retail Commercial & Limited Services  
 Development Agreement limiting the use to a restaurant with the option of a drive-thru, as well as other requirements and limitations (See staff report for details).



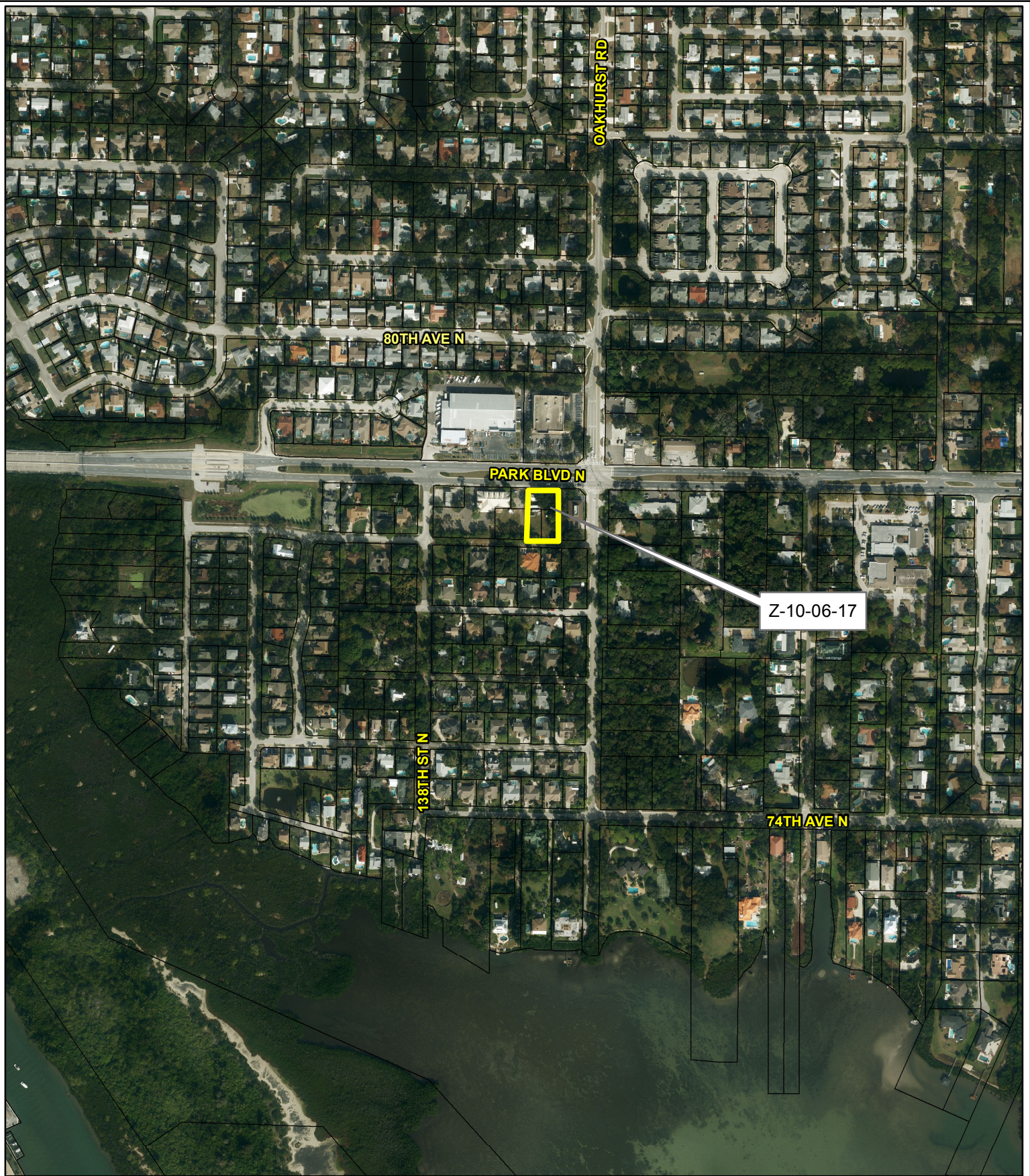
30/30/15/36486/000/1590, 1540, 1530

Prepared by: Pinellas County Planning Department



Date: 05/10/2017

1 inch = 0.09 miles



**Z-10-06-17**  
**AERIAL MAP**

**Zoning** **From:** C-1, Neighborhood Commercial  
**To:** C-2, General Retail Commercial & Limited Services  
 Development Agreement limiting the use to a restaurant with the option of a drive-thru, as well as other requirements and limitations (See staff report for details).

30/30/15/36486/000/1590, 1540, 1530

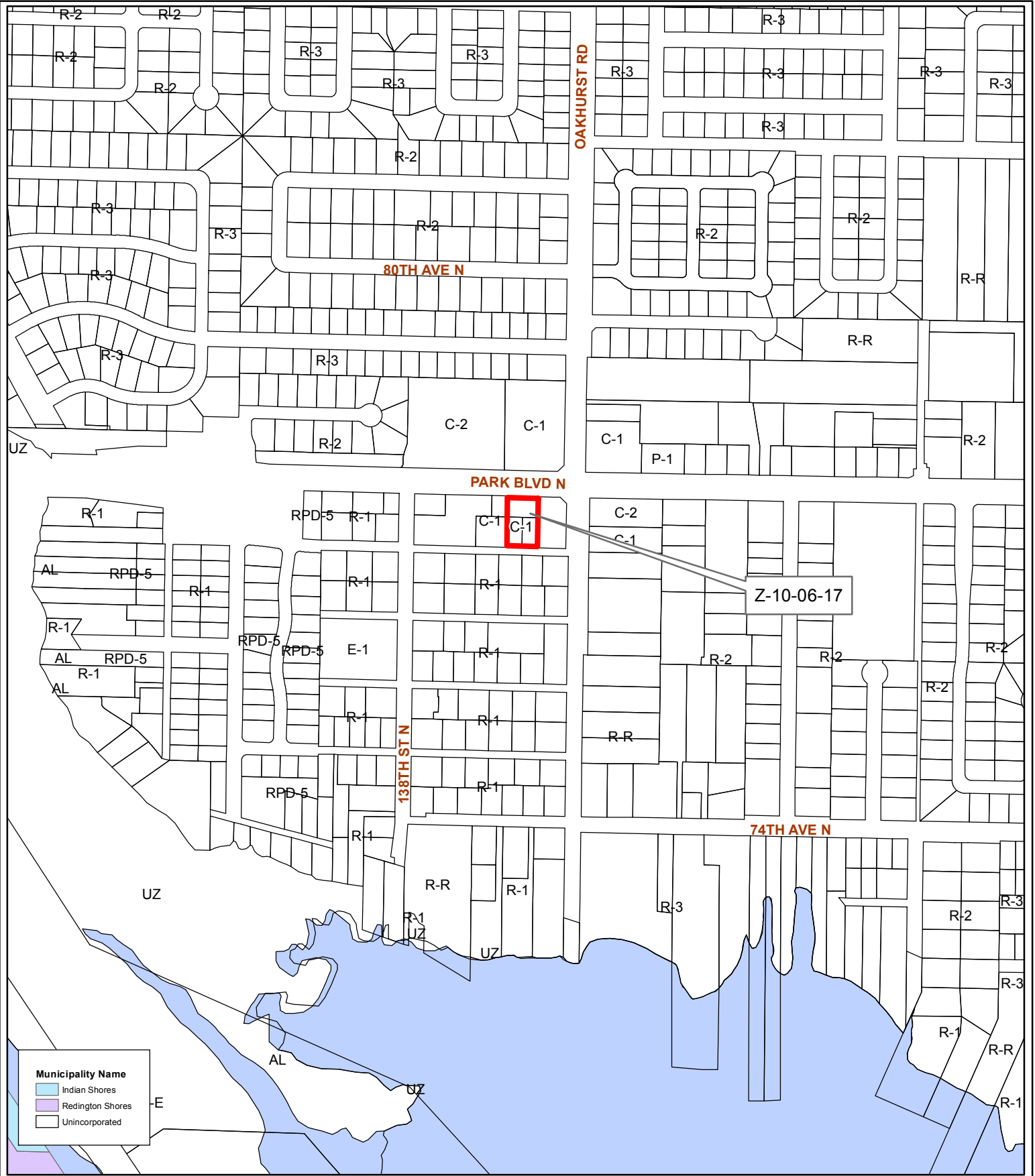
Prepared by: Pinellas County Planning Department



Date: 05/10/2017



1 inch = 0.09 miles



**Municipality Name**

- Indian Shores
- Redington Shores
- Unincorporated

**Z-10-06-17**  
**MUNICIPALITY MAP**

**Zoning From:** C-1, Neighborhood Commercial  
**To:** C-2, General Retail Commercial & Limited Services  
 Development Agreement limiting the use to a restaurant with the option of a drive-thru, as well as other requirements and limitations (See staff report for details).



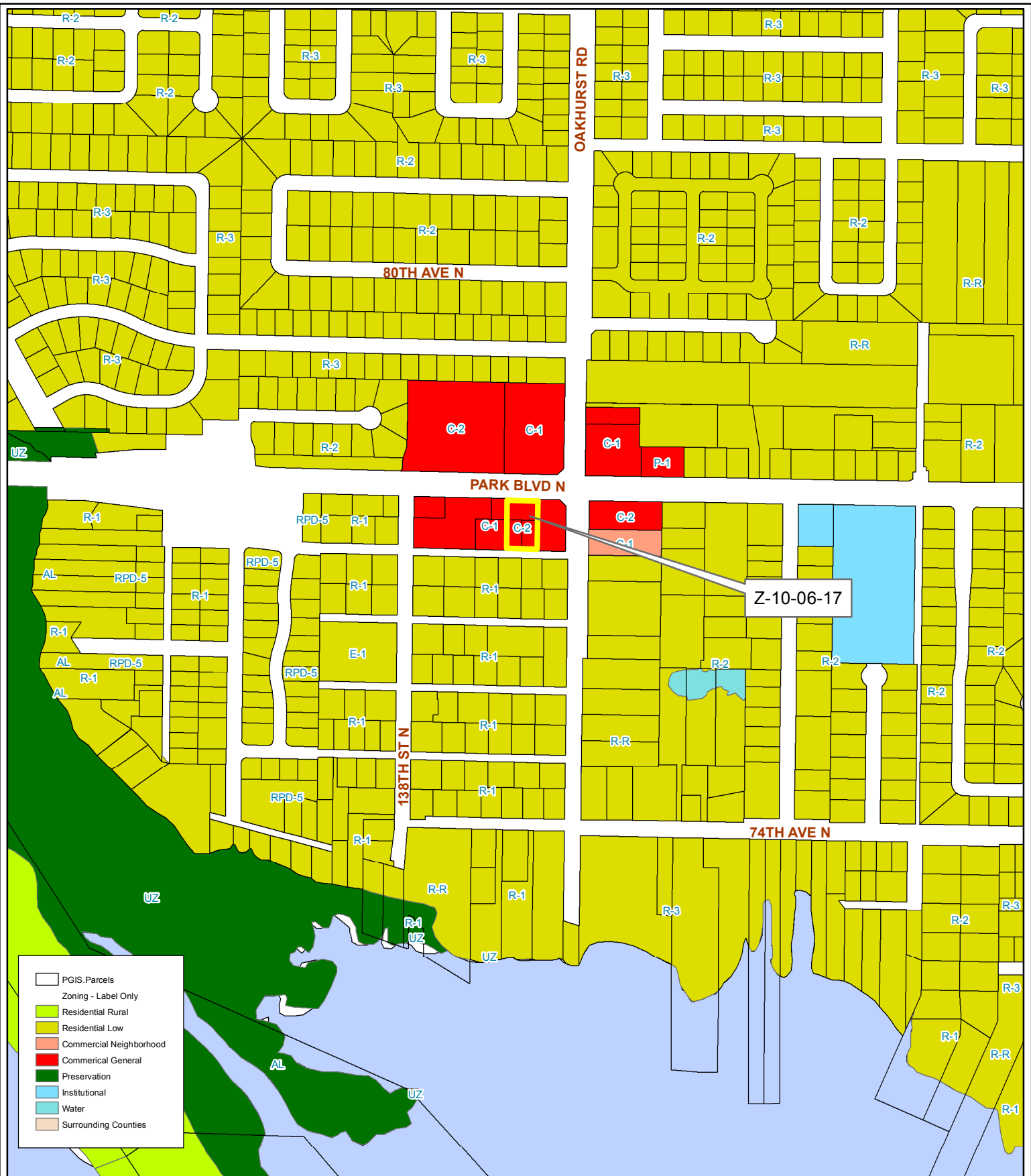
30/30/15/36486/000/1590, 1540, 1530

Prepared by: Pinellas County Planning Department



Date: 05/10/2017

1 inch = 0.09 miles



- PGIS Parcels
- Zoning - Label Only
- Residential Rural
- Residential Low
- Commercial Neighborhood
- Commercial General
- Preservation
- Institutional
- Water
- Surrounding Counties

**Z-10-06-17**  
**PROPOSED ZONING MAP**

**Zoning From:** C-1, Neighborhood Commercial  
**To:** C-2, General Retail Commercial & Limited Services  
 Development Agreement limiting the use to a restaurant with the option of a drive-thru, as well as other requirements and limitations (See staff report for details).



30/30/15/36486/000/1590, 1540, 1530

Prepared by: Pinellas County Planning Department



Date: 05/10/2017

1 inch = 0.09 miles