



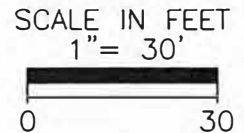
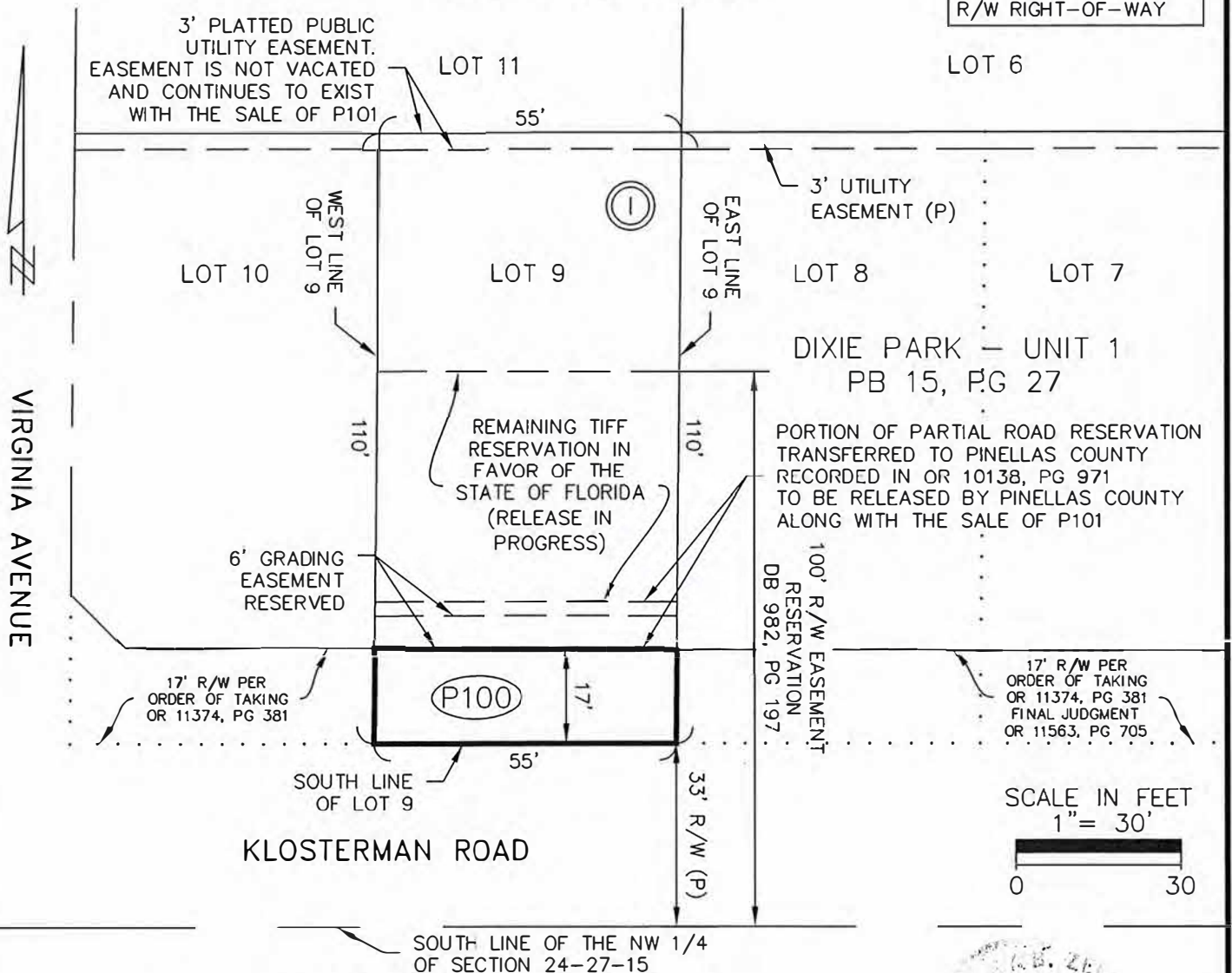
SECTION 24, TOWNSHIP 27 SOUTH, RANGE 15 EAST  
 DESCRIPTION

The South 17.00 feet of Lot 9, Block I, Dixie Park, Unit 1, according to the plat thereof as recorded in Plat Book 15, Page 27, of the Public Records of Pinellas County, Florida.

Said parcel containing 935 square feet or 0.021 acres more or less.

LEGEND	
OR	OFFICIAL RECORDS
PG	PAGE
(P)	PLAT
R/W	RIGHT-OF-WAY

SKETCH - NOT A SURVEY



Additions or deletions by other than the Professional Land Surveyor in responsible charge is prohibited.  
 Land Description is invalid without signature and embossed seal of the Professional Land Surveyor

CALCULATED BY: RAC	The above Sketch and/or Land description was prepared under my supervision and is true and correct to the best of my knowledge and belief.
CHECKED BY:	
S.F.N.:	By: Pinellas County Survey and Mapping Division <i>Shirley B. Zeller</i> DATE <u>November 18, 2019</u>
1332_00485	SHIRLEY B. ZELLER, PROFESSIONAL SURVEYOR AND MAPPER LICENSE NUMBER: 5877 STATE OF FLORIDA, PHONE # (727) 464-8904

