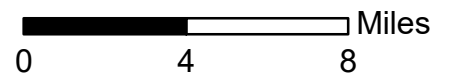
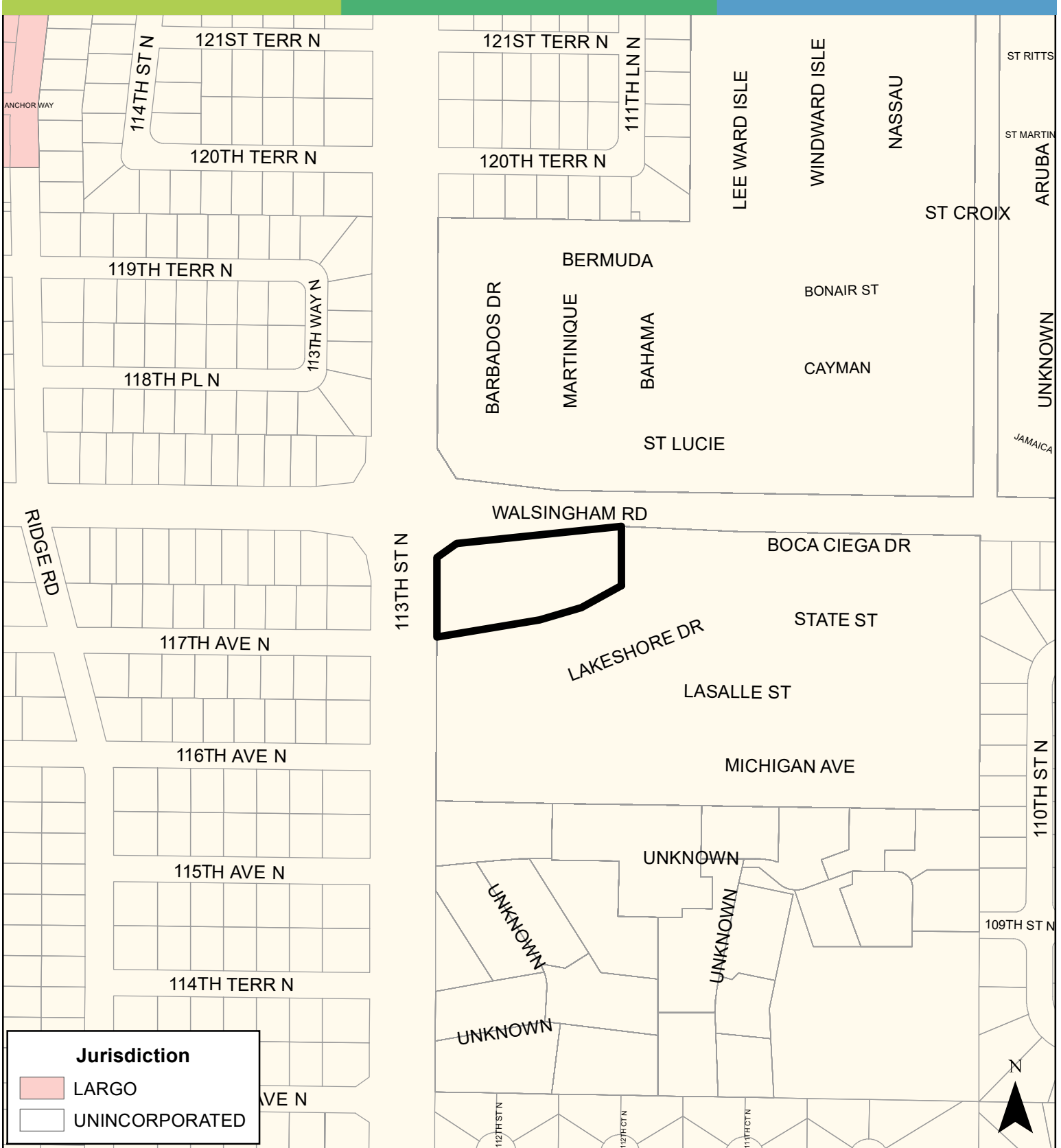


JURISDICTION: Pinellas County **FROM:** Residential Low Medium

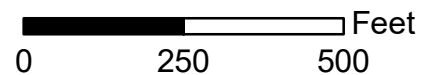
AREA: 1.79 Acres **TO:** Residential Medium





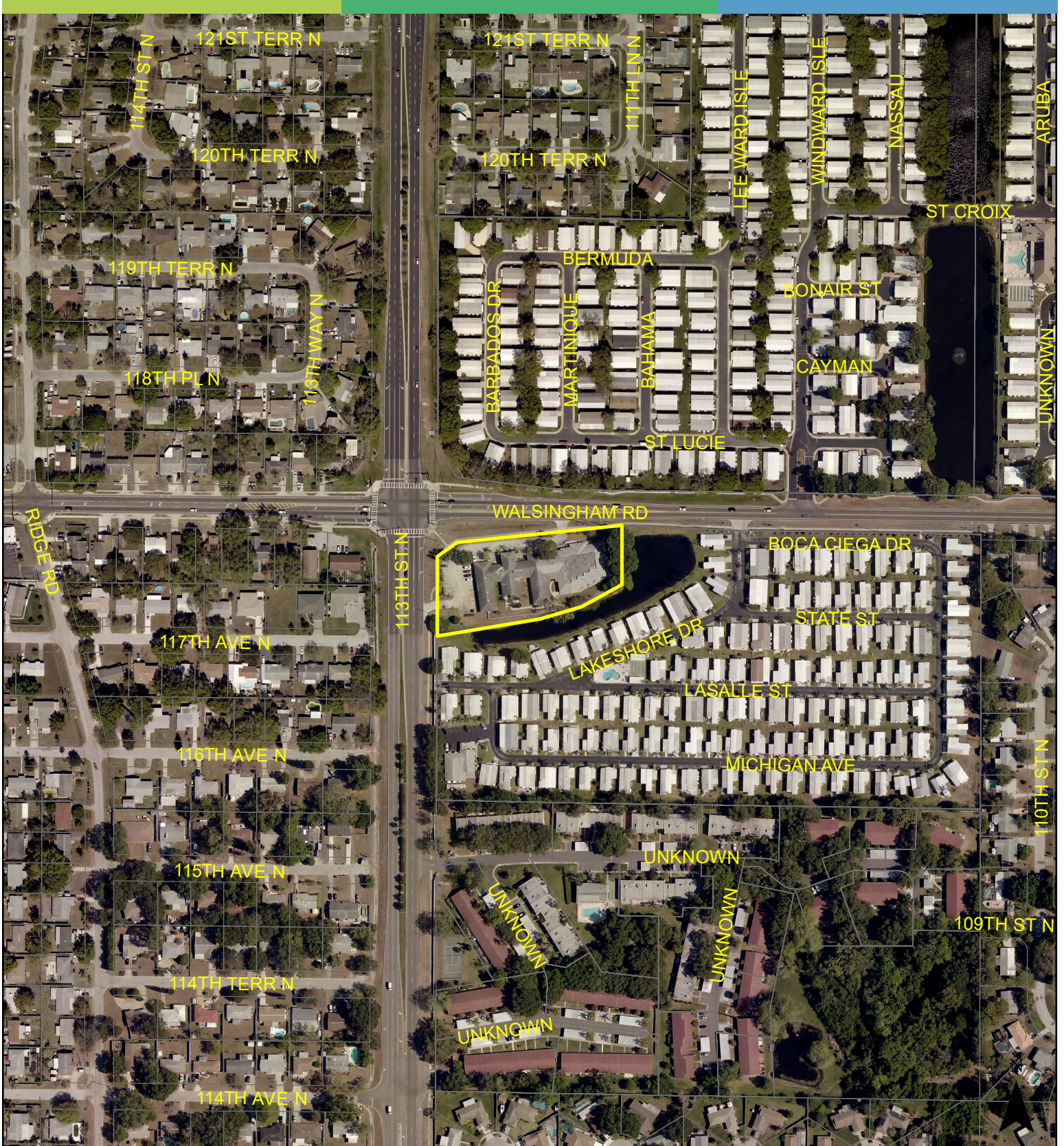
JURISDICTION: Pinellas County **FROM:** Residential Low Medium

AREA: 1.79 Acres **TO:** Residential Medium



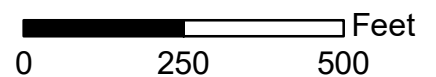
Case CW20-01

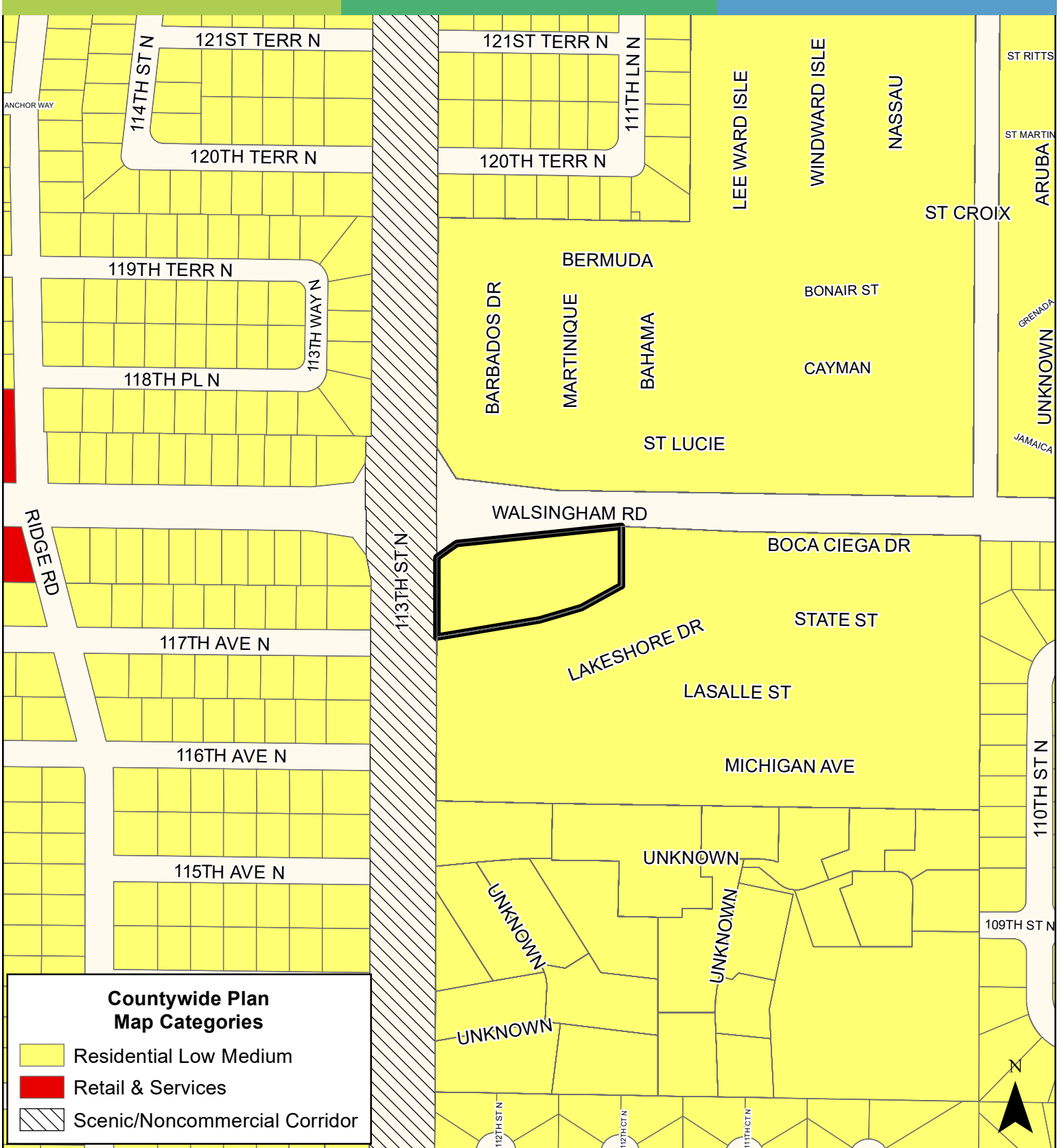
Map 3: Aerial Map



JURISDICTION: Pinellas County **FROM:** Residential Low Medium

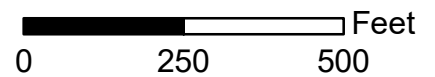
AREA: 1.79 Acres **TO:** Residential Medium

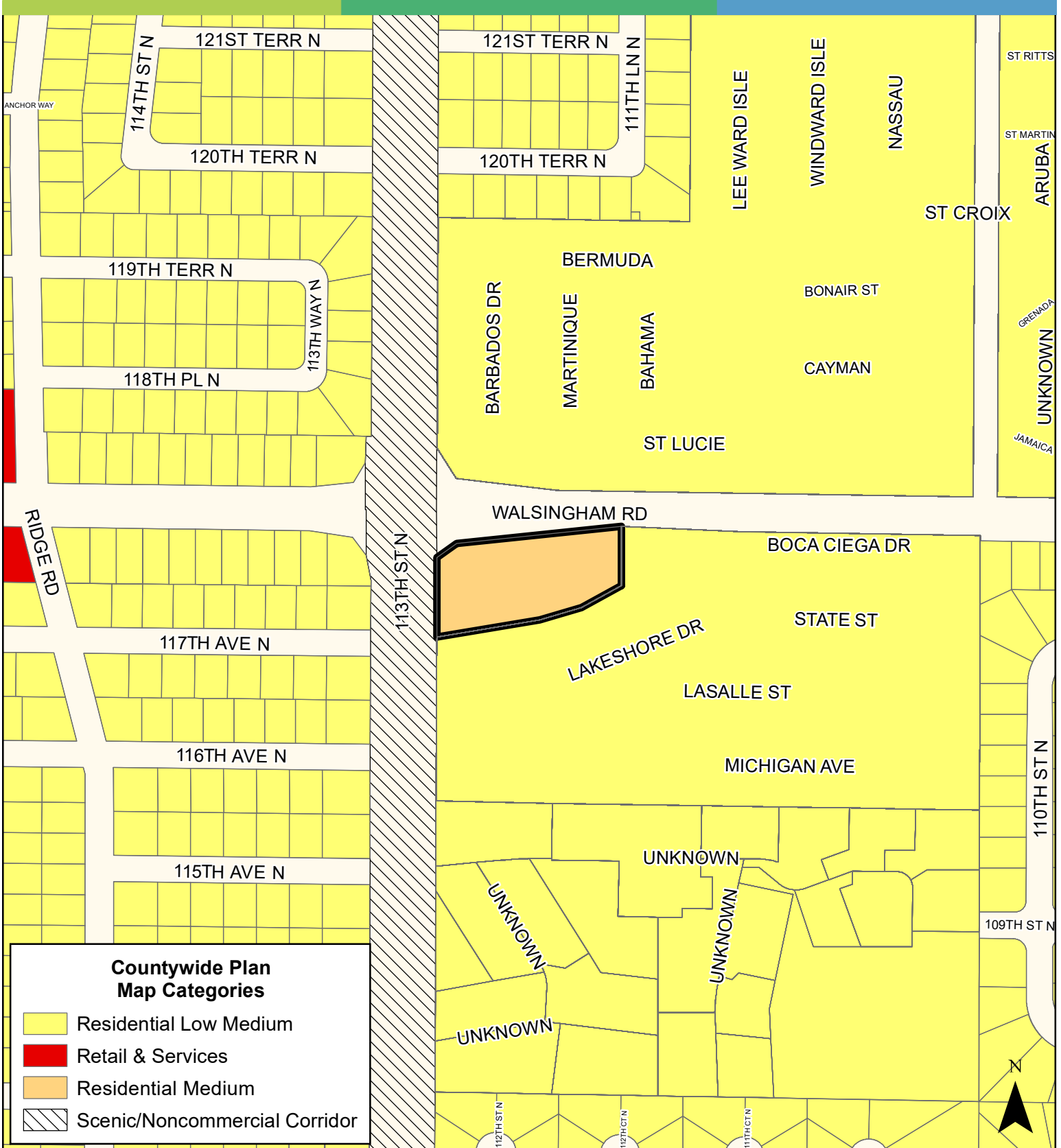




JURISDICTION: Pinellas County **FROM:** Residential Low Medium

AREA: 1.79 Acres **TO:** Residential Medium





JURISDICTION: Pinellas County **FROM:** Residential Low Medium

AREA: 1.79 Acres **TO:** Residential Medium

