

PINELLAS COUNTY
125139

AREA OF MINIMAL FLOOD HAZARD

Flood Insurance Rate Map
12103C0183G

Effective FIRM 9/03/2003

AE
(EL 12 Feet)

AE
(EL 11 Feet)

AE
(EL 13 Feet)

AE AE
(EL 11 Feet)

VE
(EL 14 Feet)

Site Vulnerability Map 1

Floodplain (Effective 2003)

- Coastal Transects

FEMA National Flood Hazard Zones

Flood Zones

- Zone AE
- Zone VE
- Zone X






MAP NOT TO SCALE

Source: FEMA Map Service, FEMA FIRM 12103C0183G, Effective 9/03/2003.



Site Vulnerability Map 2

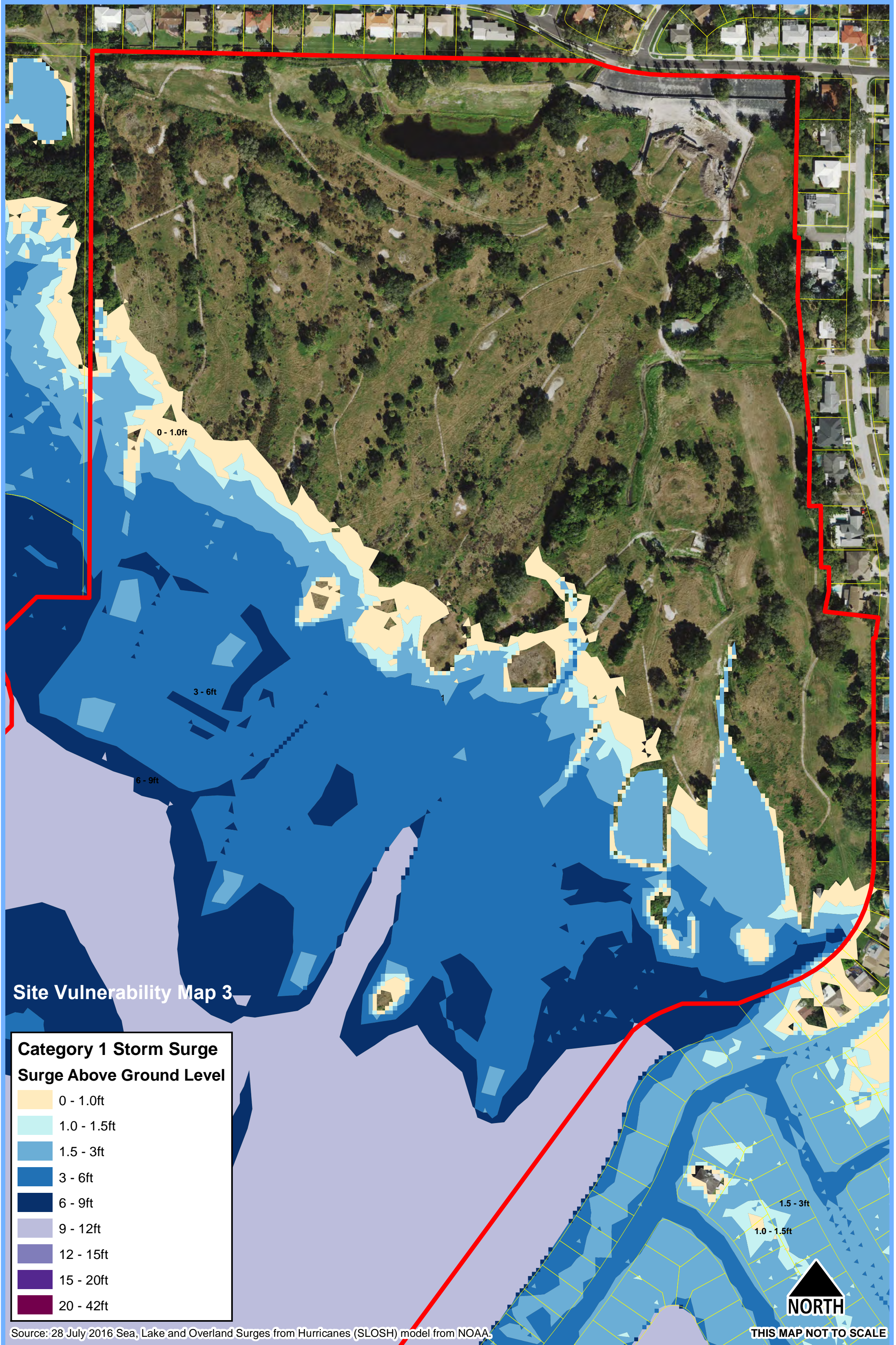
Coastal Storm Area

-  VE Velocity Zone
-  Cat 1 Storm Surge (CHHA)
-  Cat 1 > 20% Parcel

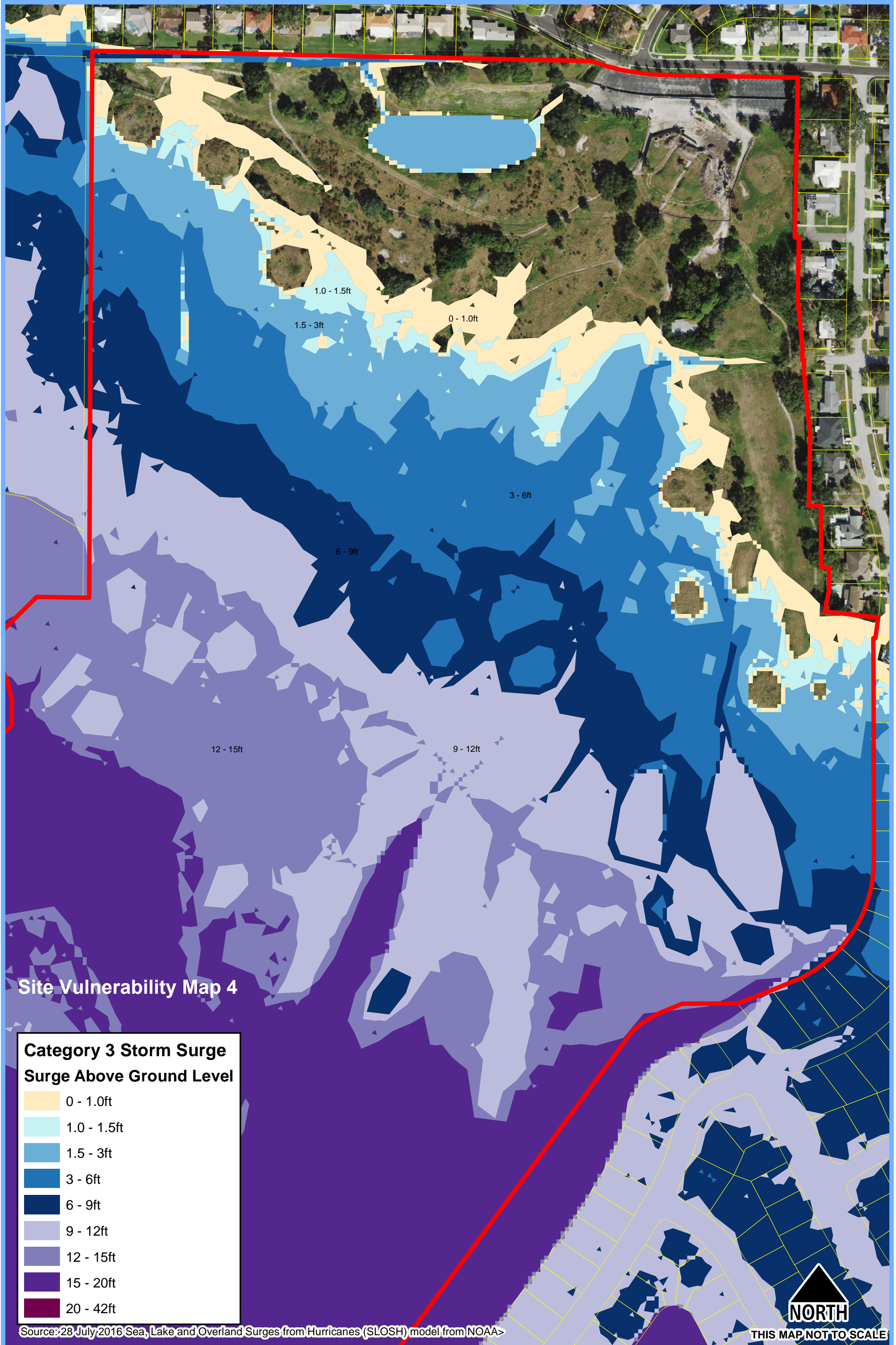


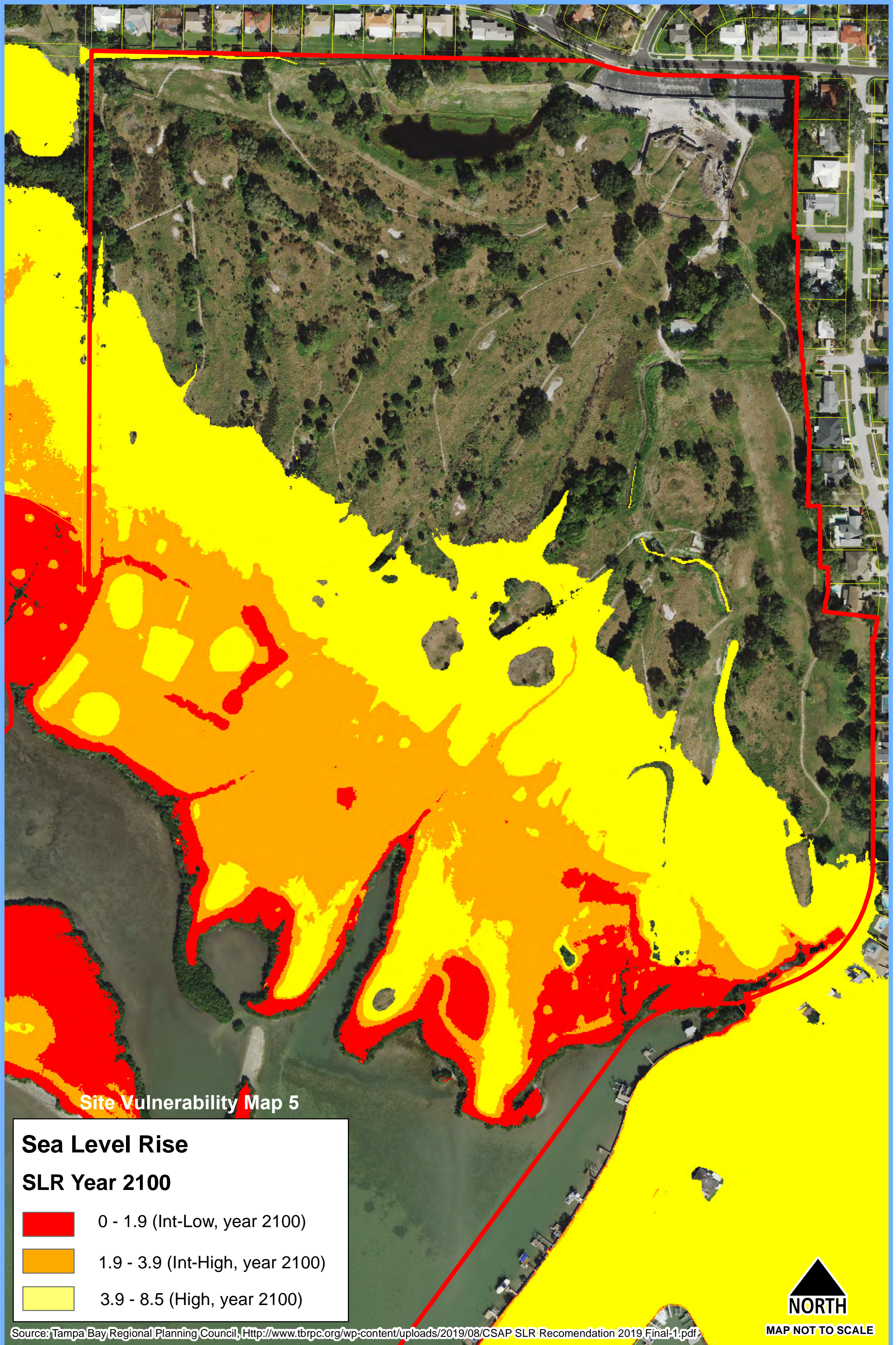
MAP NOT TO SCALE

Source: 28 July 2016 Sea, Lake and Overland Surges from hurricanes (SLOSH) model from NOAA.



Source: 28 July 2016 Sea, Lake and Overland Surges from Hurricanes (SLOSH) model from NOAA.



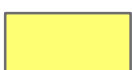




Site Vulnerability Map 5

Sea Level Rise

SLR Year 2100

-  0 - 1.9 (Int-Low, year 2100)
-  1.9 - 3.9 (Int-High, year 2100)
-  3.9 - 8.5 (High, year 2100)



MAP NOT TO SCALE

Source: Tampa Bay Regional Planning Council, http://www.tbrpc.org/wp-content/uploads/2019/08/CSAP_SLR_Recomendation_2019_Final-1.pdf