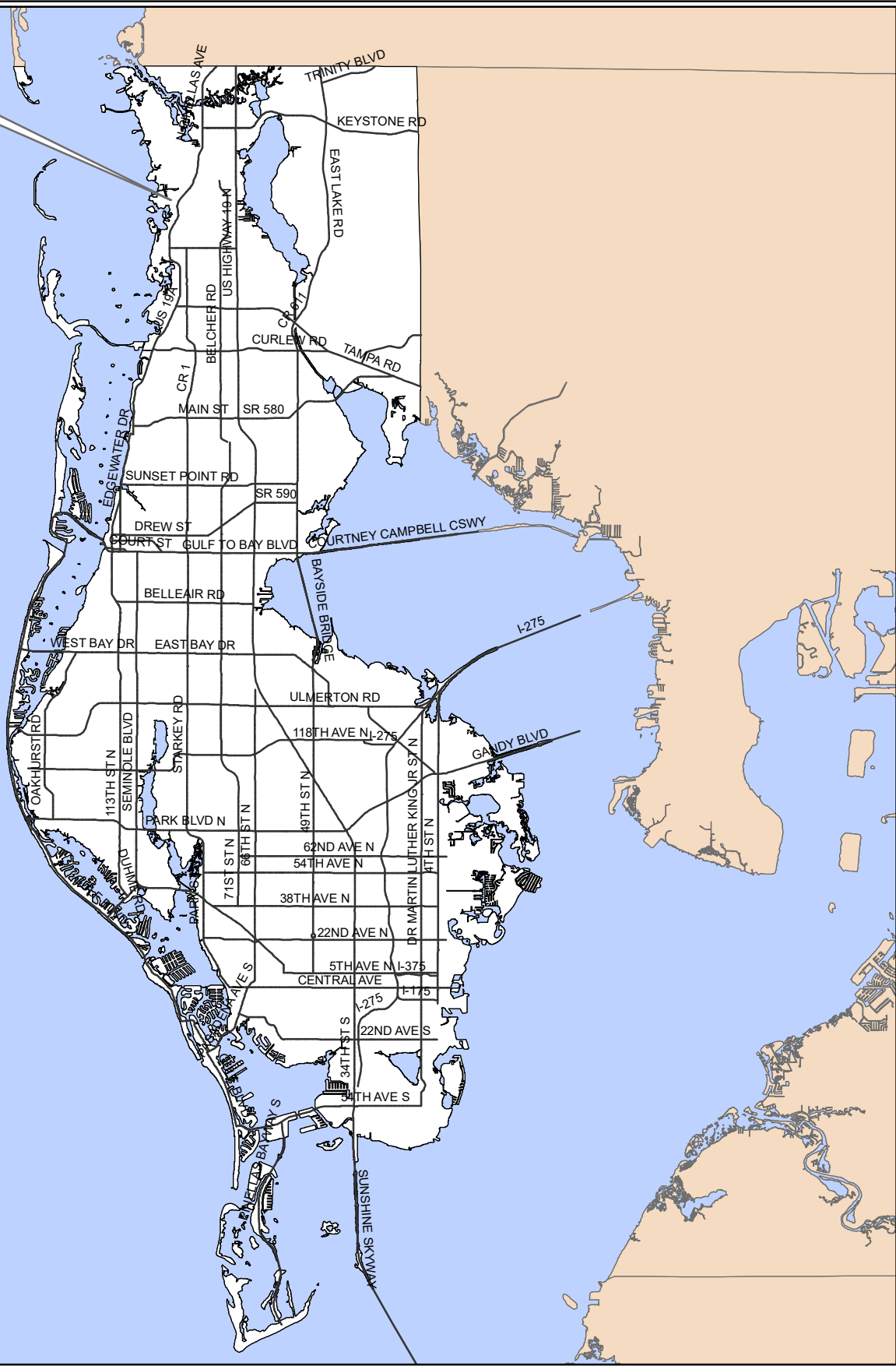



Z/LU-31-12-18



 Surrounding Counties

**Z/LU-31-12-18**  
**Location Map**

**Zoning** From: R-R, A-E, R-3, R-2, RM-5, RPD-2.5, RPD-5, P-RM, AL  
To: RBR, FBR, P-RM, PC, AL

**Land Use** From: RL, P-RM  
To: R/OS



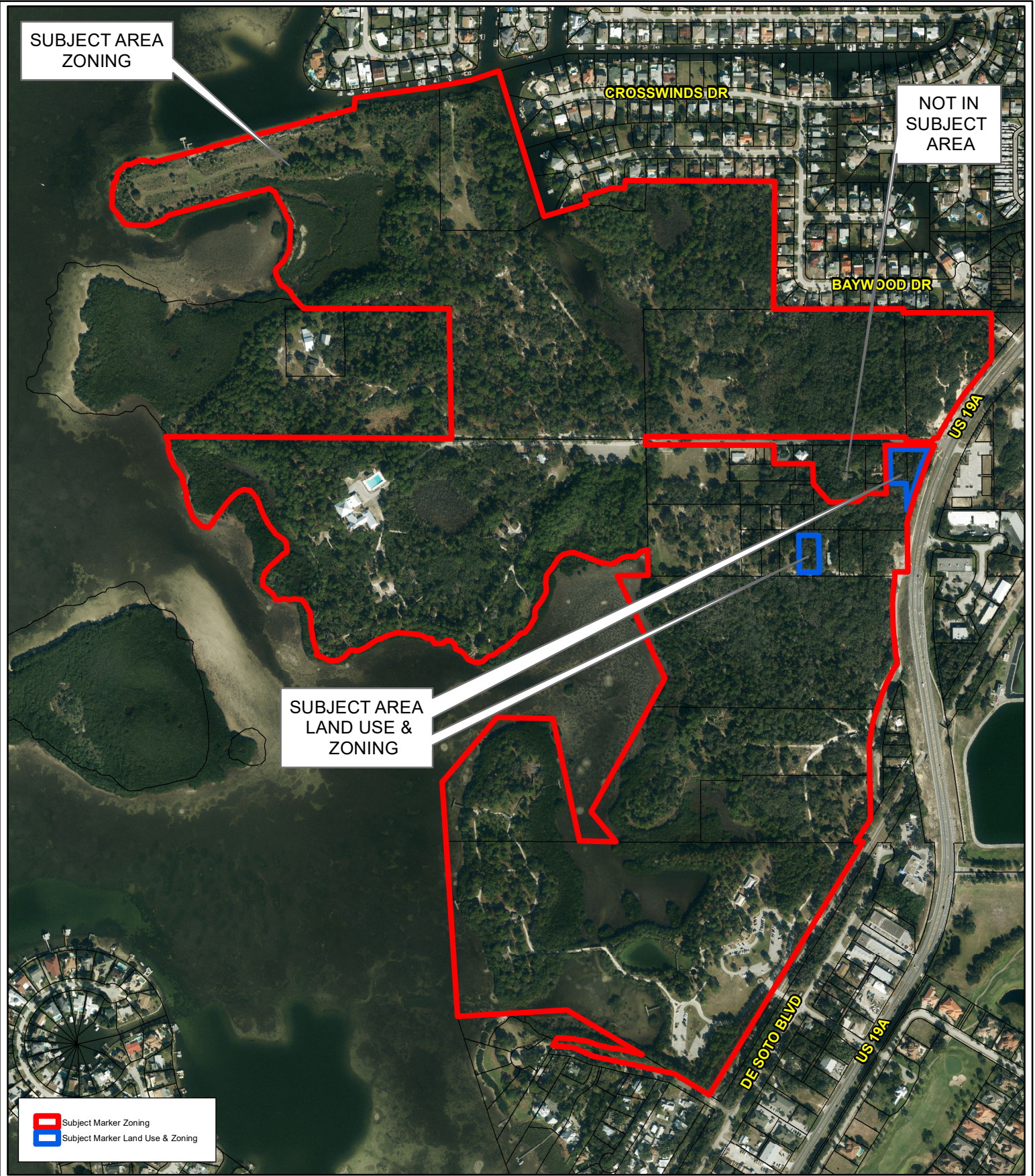
Various Parcels (See staff report for details)

Prepared by: Pinellas County Planning Department



Date: 11/8/2018

1 inch = 4.5 miles



**Z/LU-31-12-18**  
**Aerial Map**

**Zoning** From: R-R, A-E, R-3, R-2, RM-5, RPD-2.5, RPD-5, P-RM, AL  
To: RBR, FBR, P-RM, PC, AL

**Land Use** From: RL, P-RM  
To: R/OS

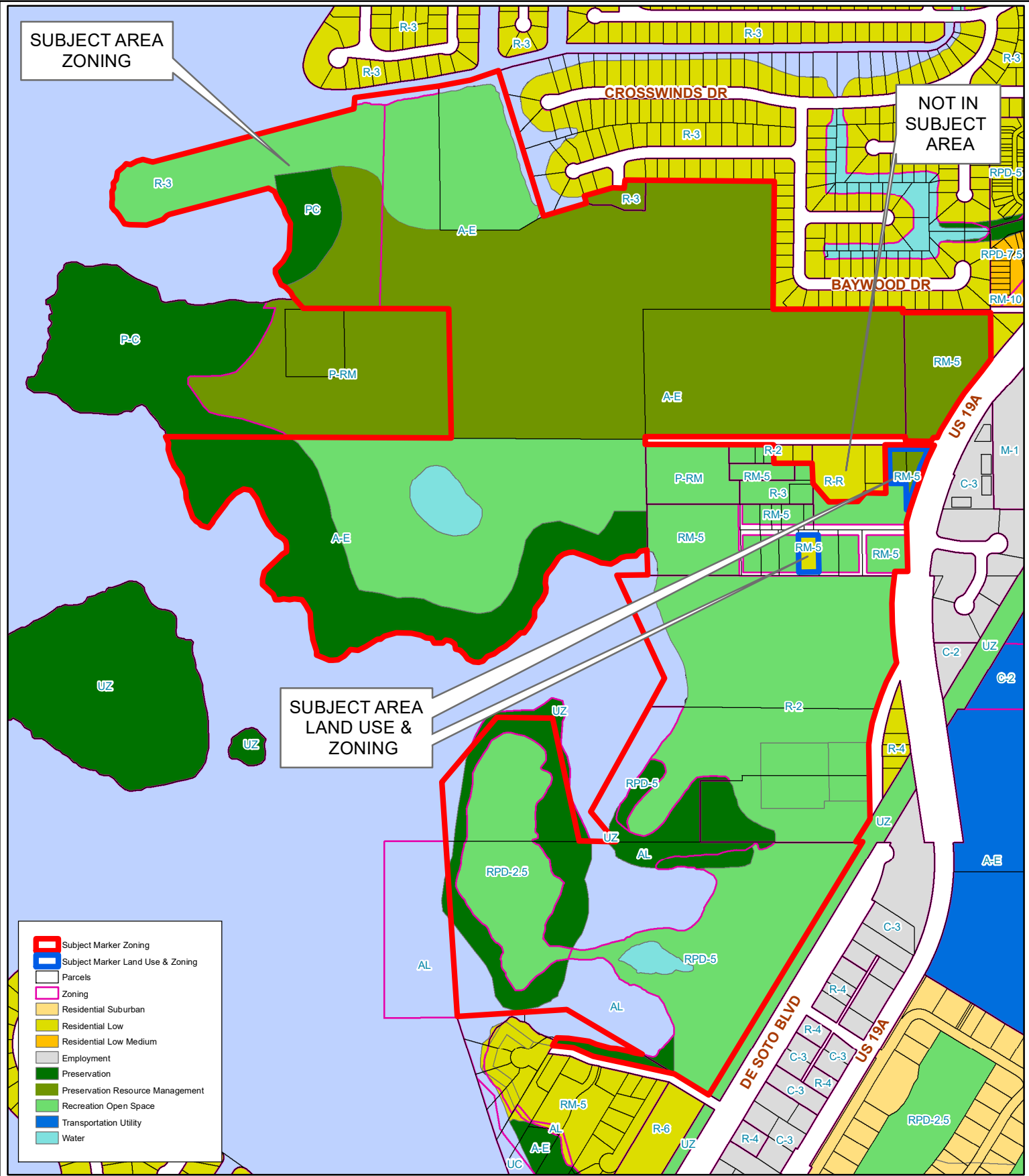


Various Parcels (See staff report for details)  
Prepared by: Pinellas County Planning Department



Date: 11/8/2018

1 inch = 0.12 miles



- ▬ Subject Marker Zoning
- ▬ Subject Marker Land Use & Zoning
- Parcels
- Zoning
- Residential Suburban
- Residential Low
- Residential Low Medium
- Employment
- Preservation
- Preservation Resource Management
- Recreation Open Space
- Transportation Utility
- Water

**Z/LU-31-12-18**  
**Current Land Use & Zoning**

**Zoning** From: R-R, A-E, R-3, R-2, RM-5, RPD-2.5, RPD-5, P-RM, AL  
 To: RBR, FBR, P-RM, PC, AL

**Land Use** From: RL, P-RM  
 To: R/OS

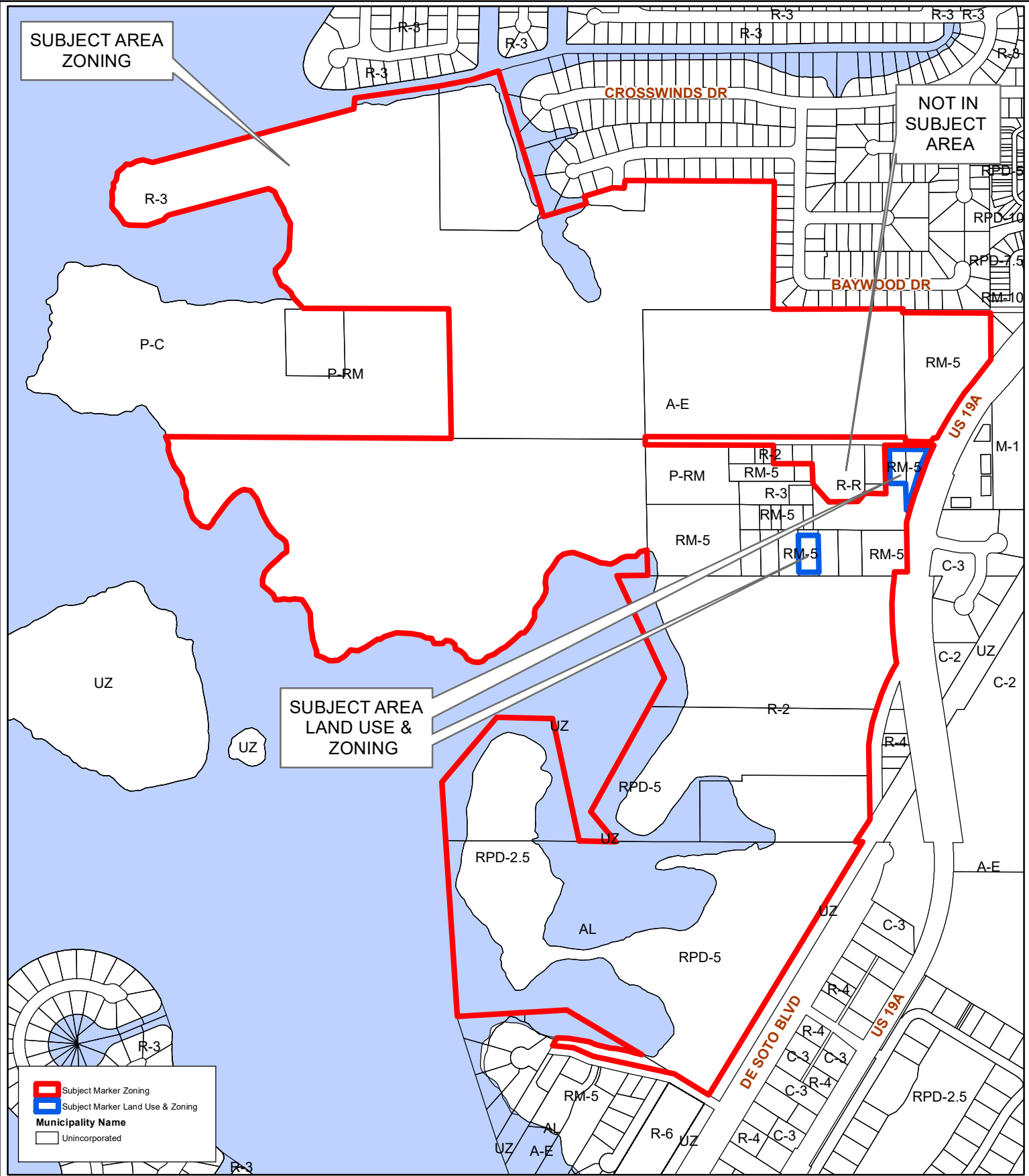


Various Parcels (See staff report for details)  
 Prepared by: Pinellas County Planning Department



Date: 11/8/2018

1 inch = 0.12 miles



**Z/LU-31-12-18**  
**Municipal Map**

**Zoning** From: R-R, A-E, R-3, R-2, RM-5, RPD-2.5, RPD-5, P-RM, AL  
 To: RBR, FBR, P-RM, PC, AL

**Land Use** From: RL, P-RM  
 To: R/OS



Various Parcels (See staff report for details)  
 Prepared by: Pinellas County Planning Department



Date: 11/8/2018

1 inch = 0.12 miles



- Subject Marker Zoning
- Subject Marker Land Use & Zoning
- Parcels
- Recreation Open Space
- Residential Suburban
- Residential Low
- Residential Low Medium
- Employment
- Preservation
- Preservation Resource Management
- Recreation Open Space
- Transportation Utility
- Water

**Z/LU-31-12-18**  
**Proposed Land Use & Zoning**

**Zoning** From: R-R, A-E, R-3, R-2, RM-5, RPD-2.5, RPD-5, P-RM, AL  
 To: RBR, FBR, P-RM, PC, AL

**Land Use** From: RL, P-RM  
 To: R/OS



Various Parcels (See staff report for details)  
 Prepared by: Pinellas County Planning Department



Date: 11/8/2018

1 inch = 0.12 miles