



Doing Things!

Public Works

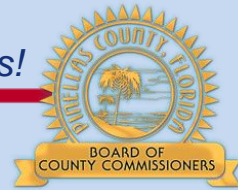
Work Session Presentation

Presented by: Kelli Levy and Ken Jacobs

Division Managers

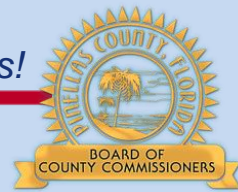
January 19, 2016



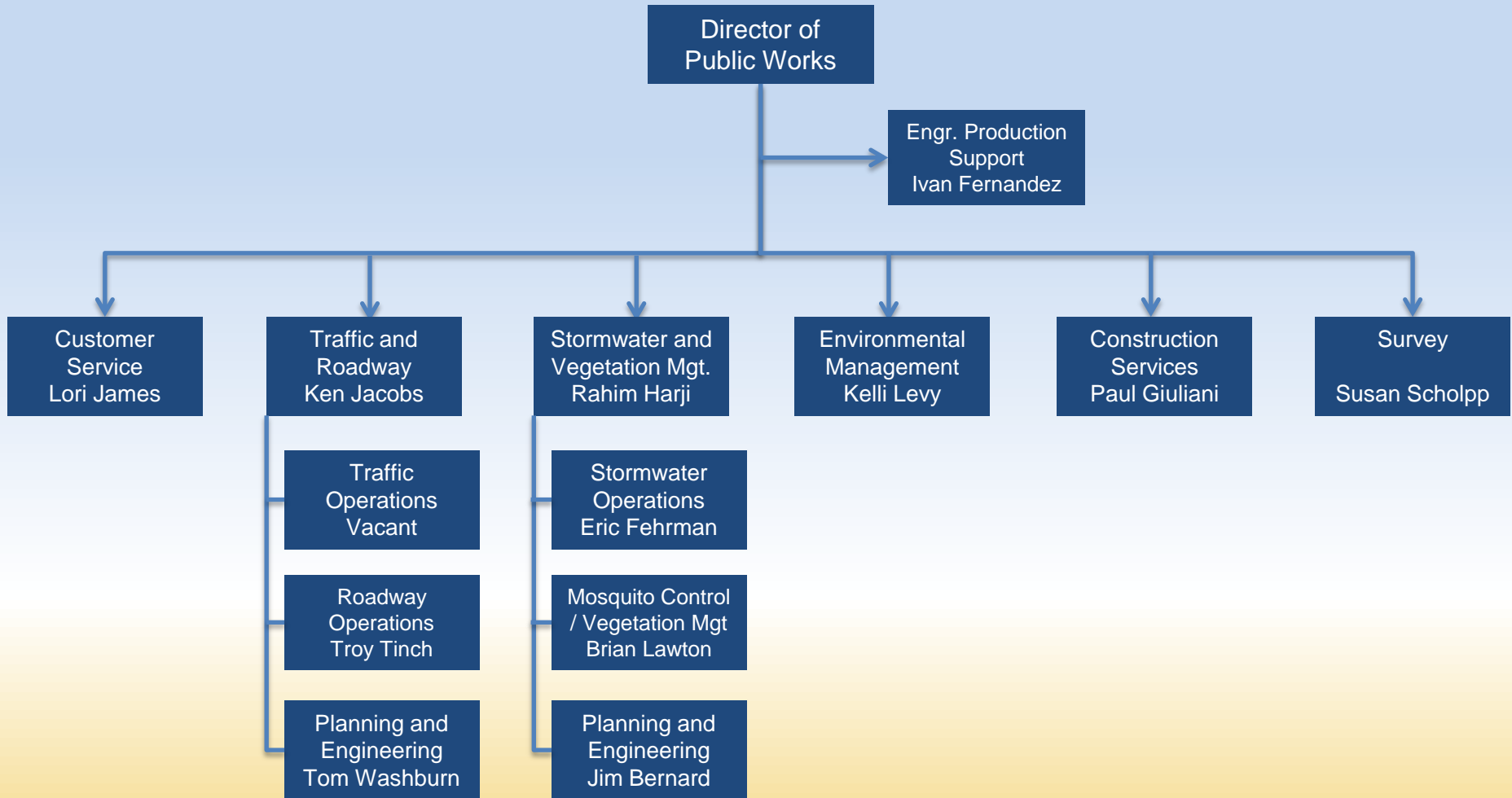


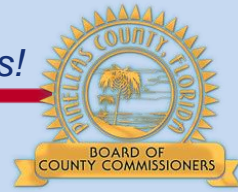
Who We Are

- 394 FTE (20.5% of workforce) in six divisions
 - Customer Service
 - Stormwater and Vegetation Management
 - Traffic and Roadway
 - Environmental Management
 - Construction Management
 - Survey



Public Works Department





What We Do: Business Systems

- Internal support
 - Customer service and dispatch
 - Inventory management
 - Work/asset management tools and analysis
 - Departmental training and licensing coordination
 - Budget and contract coordination

What We Do: Natural Resources

- Coastal and Freshwater Resources
 - Beach nourishment and inlet studies
 - Environmental monitoring and assessment
 - Water and navigation
- Watershed Management
 - Watershed and stormwater planning, floodplain management (CRS)
 - TMDL implementation
 - Adopt-A-Pond and ecological services



What We Do: Natural Resources

- Vegetation and Mosquito Control
 - Manage mosquito populations, monitor for viral activity, public outreach
 - Control nuisance vegetation, habitat management
- Urban Forestry
 - Maintain and preserve the urban tree canopy



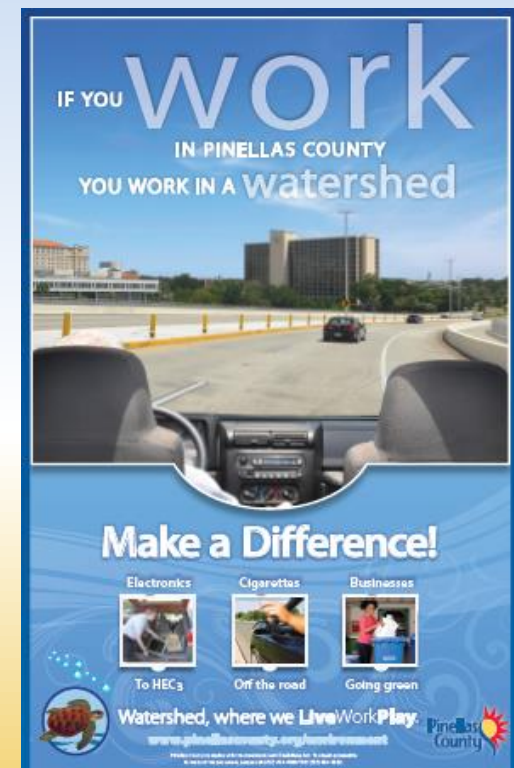
What We Do: Natural Resources

- Stormwater Management
 - Open conveyance maintenance and restoration
 - Management of ponds and other permitted systems
 - Street sweeping and other pollution prevention activities



What We Do: Natural Resources

- Watershed Protection
 - NPDES permit implementation, inspections, and compliance
 - Public outreach
 - Surface Water Assessment roll development, impervious area data management, and credit policy reviews



Ensure Public Health, Safety, and Welfare

- 2.1 Provide planning, coordination, prevention, and protective services to ensure a safe and secure community
 - Plan, monitor, and maintain to reduce local flooding issues and to ensure our local waters are “fishable and swimmable”
 - Maintain waterway markers and remove derelict vessels to ensure safe, navigable waters
 - Reduce number of problematic mosquitoes



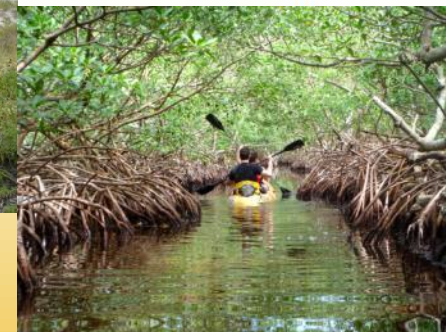
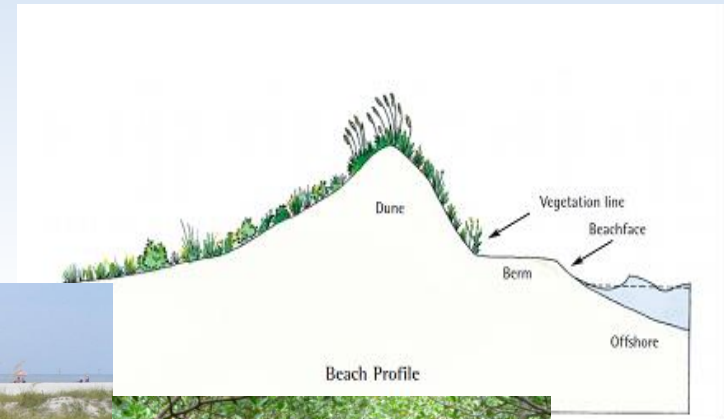
Practice Superior Environmental Stewardship

- 3.2 Preserve and manage environmental lands, beaches, parks, and historical assets
 - Maintain the County Shore Protection Program in accordance with U.S. Army Corps of Engineers (USACE) standards
 - Implement a 1:1 tree replacement program
 - Ensure ecological success of county mitigation areas



Practice Superior Environmental Stewardship

- 3.3 Protect and improve the quality of our water, air, and other natural resources
 - Improve quality of surface waters
 - Protect coastal resources
 - Maintain delegation for mangrove protection



Foster Continual Economic Growth and Vitality

- 4.3 Catalyze redevelopment through planning and regulatory programs
 - Evaluate opportunities for regional stormwater systems
 - Invest in the CRS program



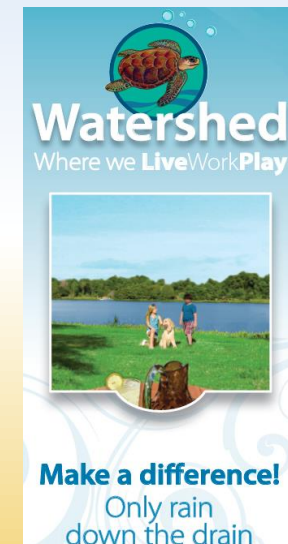
Foster Continual Economic Growth and Vitality

- 4.4 Invest in infrastructure to meet current and future needs
 - Implement the surface water assessment approved 10-year corrugated metal pipe (CMP) replacement program and channel maintenance cycles



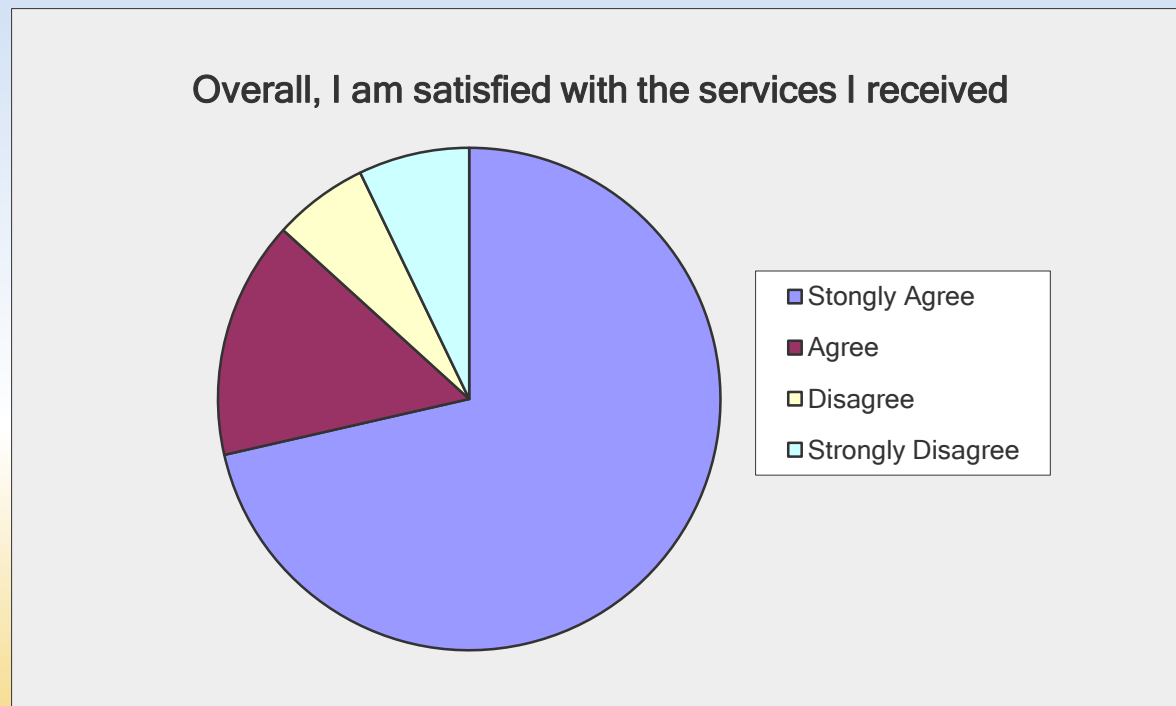
Deliver First Class Services to the Public and our Customers

- 5.1 Maximize partner relationships and public outreach
 - Promote Watershed “Live, Work, Play,” Surface Water Utility at Work; and CRS Plan for Public Information outreach campaigns
- 5.2 Be responsible stewards of the public’s resources
 - Maintain Effective and responsible asset management



Deliver First Class Services to the Public and our Customers

- 5.4 Strive to exceed customer expectations
 - Request, respond, and learn from feedback



Opportunities

- Succession planning

Doing Things:

- Internal professional development programs to ready staff for the next level (1.2)
 - Career ladders
 - Cross functional projects and programs
- Effective information transfer from retiring staff (1.1)

Opportunities

- Focus on Surface Water Fund Stability

Doing Things:

- Streamline processes and operations
- Re-visit impervious area calculations and billing options
- Seek grant funding/cost share opportunities
- Improve transfer of responsibility process resulting from annexations



Key Measures

- % of Division staff that participate in training (1.2)
- Overall reduction in preventable accidents compared to goal (1.3)
- Reductions in problem mosquitoes (2.1)
- % of waterway markers inspected annually (2.1)



Key Measures

- % of nourished beaches that meet USACE minimum berm width standards (3.2)
- Pollutants removed through street sweeping (3.3)
- % NPDES permit requirements achieved (3.3)
- Ratio of trees planted vs. trees removed (3.3)



Key Measures

- Miles of corrugated metal pipe (CMP) replaced or restored compared to goal (4.4)
- % of operational budget supported by outside resources (5.1)
- % of emergency/high priority work requests completed within prescribed timeframes (5.3)
- % satisfactory or better satisfaction rating (5.4)



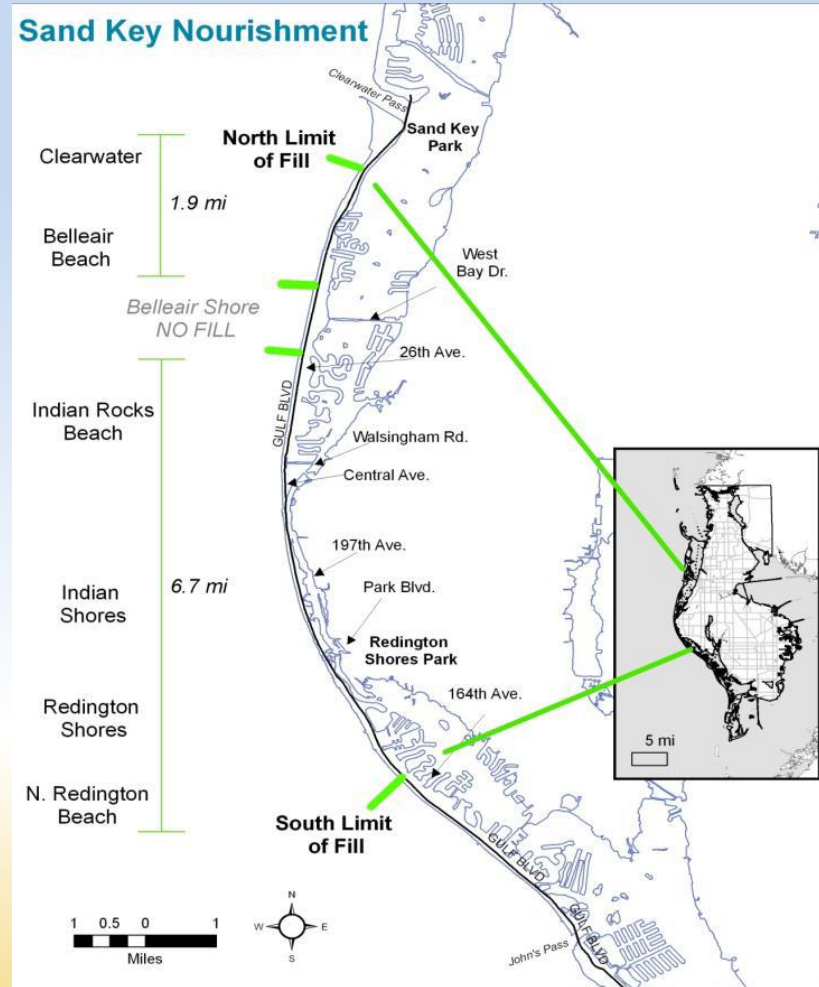
2016 Doing Things

- Replace or restore 2.4 miles of CMP
- Restore 30+ miles of open conveyance
- Begin the construction on the permanent t-groins at Upham Beach
- Complete CRS implementation plan towards goal of improved rating
- Finalize the Joe's Creek Watershed Management and TMDL Implementation Plans
- Improve on 2015 Tree City USA designation



Coming in 2017

- Sand Key Nourishment



Thank you!



What We Do: Traffic

- Traffic Engineering and Design
 - Traffic Safety Engineering studies
 - Pedestrian, bicycle, sidewalk and trail coordination
 - Right of Way permit coordination



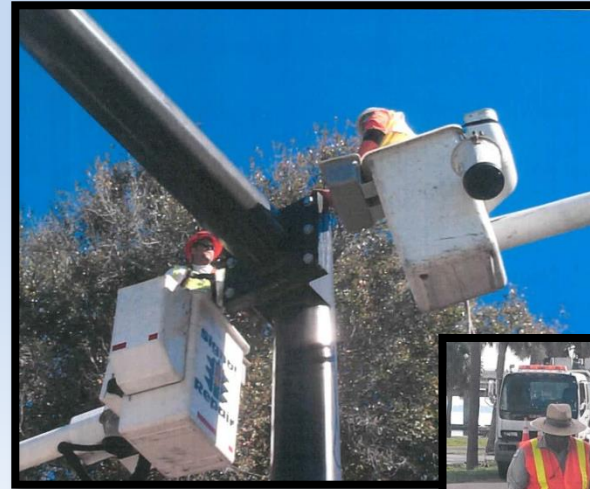
What We Do: Traffic

- Traffic Engineering and Design
 - Advanced Traffic Management System (ATMS)/Intelligent Transportation System (ITS)
 - Operate the Traffic Management Center



What We Do: Traffic

- Traffic Maintenance and Installation
 - Traffic signals and flashers
 - Street lights
 - Traffic signs and pavement markings



What We Do: Traffic

- Traffic Maintenance and Installation
 - ITS devices (CCTV cameras, message boards (DMS), fiber-optic cable and network communications)
 - Inspection services for traffic-related construction



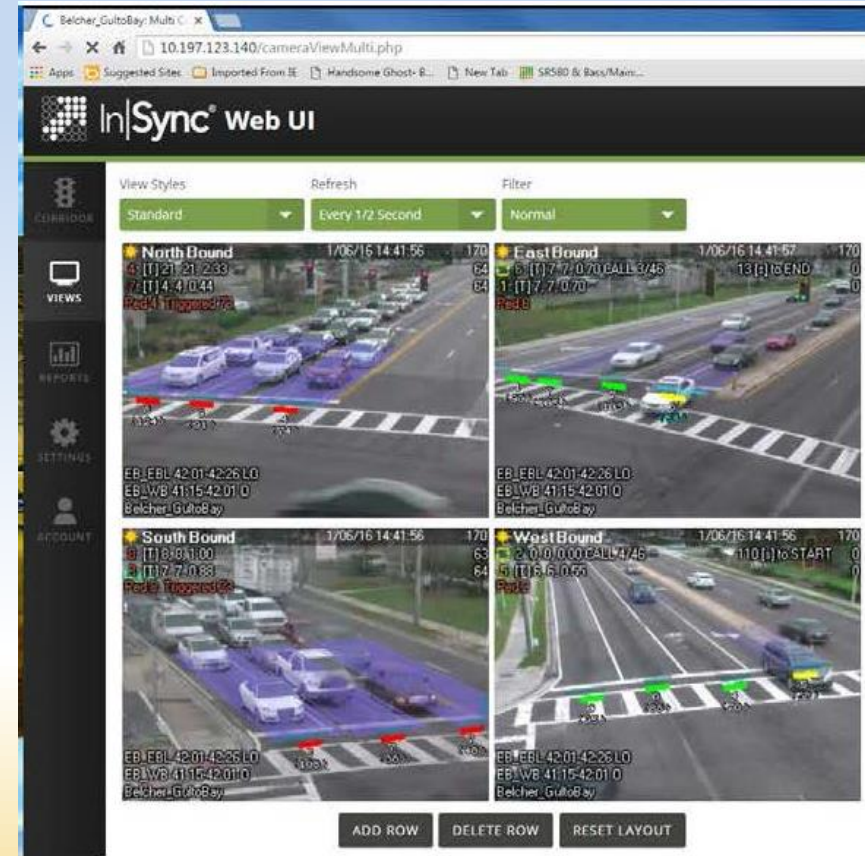
Ensure Public Health, Safety, and Welfare

- 2.5 Enhance pedestrian and bicycle safety
 - Increase miles of bicycle and pedestrian facilities
 - Reduce bicycle and pedestrian accidents, injuries, and fatalities.
 - Increase bicycle and pedestrian safety projects in the Capital Improvement Program



Practice Superior Environmental Stewardship

- 3.3 Protect and improve the quality of our water, air and other natural resources
 - Reduce air pollutants by retiming traffic signals



Practice Superior Environmental Stewardship

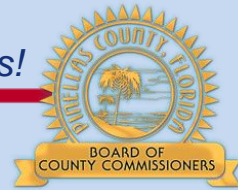
- 3.4 Reduce/reuse/recycle resources including energy, water, and solid waste
 - Convert to LED street lighting
 - Use solar powered traffic control devices



Foster Continual Economic Growth and Vitality

- 4.5 Provide safe and effective transportation systems to support the efficient flow of motorists, commerce, and regional connectivity
 - Capitalize use of ATMS/ITS systems
 - Increase safety studies





Opportunities

- Ever increasing maintenance volume and contractual requirements

Doing Things:

- Evaluate maintenance activities to determine most cost effective approach for each task
 - Develop optimal intergovernmental service agreements
- Partner with FDOT to update maintenance criteria

Opportunities

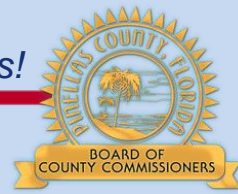
- Increase awareness and benefits of the Smart Tracs ATMS / ITS system

Doing Things:

- Initiate a Public Awareness Campaign
 - Complete the Smart Tracs website
 - Provide access to CCTV cameras to additional media outlets
 - Update ATMS / ITS videos that define benefits and other valuable traffic related information
 - Provide public with annual report on system

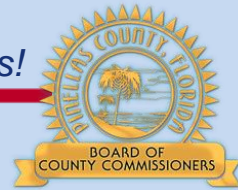


Smart Tracs ATMS / ITS system



3.4 Key Measures

- Energy consumption

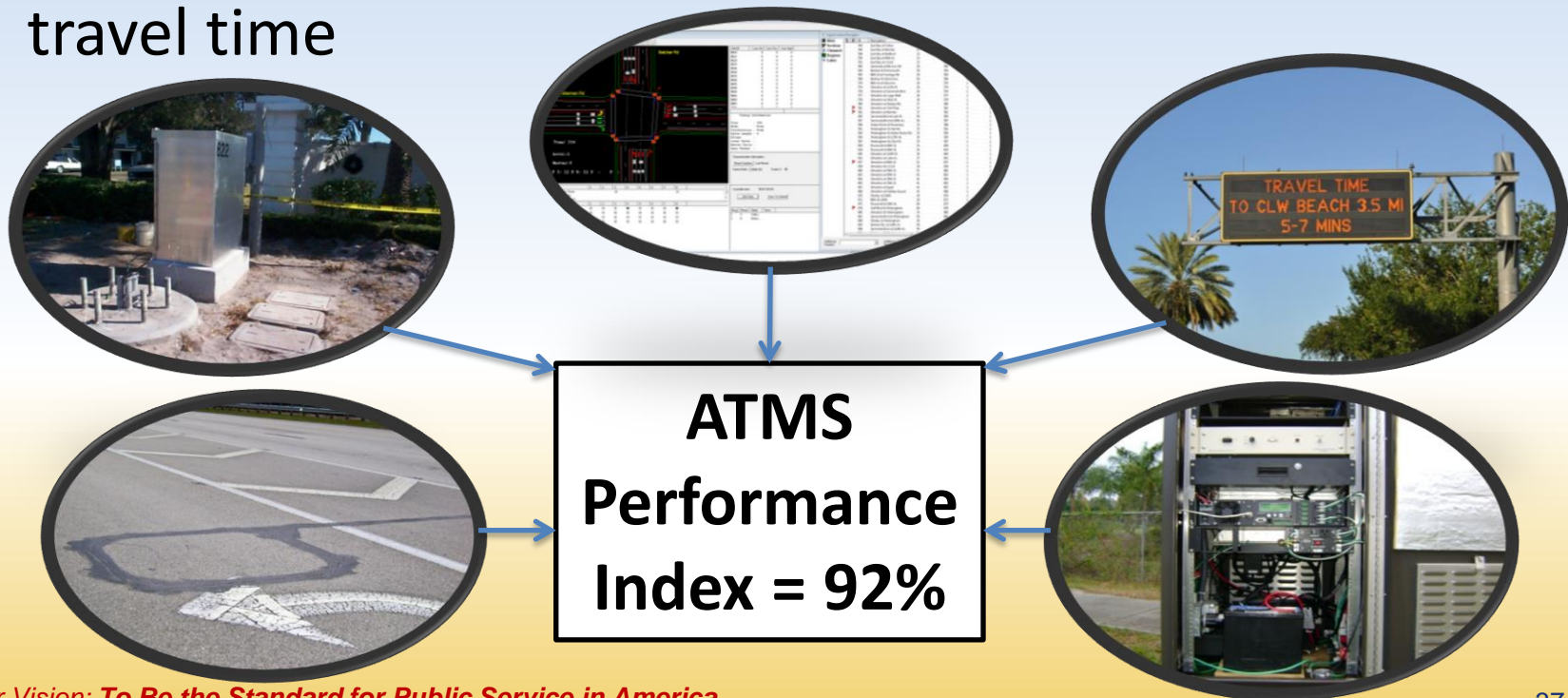


4.5 Key Measures

- % of traffic signs maintained per year
- % of centerline miles of roadway with markings refurbished per year
- % traffic studies completed within 21 days

4.5 Key Measures

- ATMS Performance Index
- Traffic Studies Performance Index
- Travel Time Index: Average travel time/free flow travel time



Thank you



What We Do: Infrastructure

■ Roadway Section

- Repair and maintain roadways
- Repair and replace stormwater pipes, curbs, drainage structures, roadway underdrain, and sidewalks



What We Do: Infrastructure

■ Bridge Section

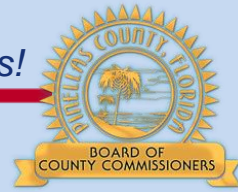
- Inspect, maintain, & repair of County-owned bridges
 - Sidewalks, handrails, guardrails, seawalls



What We Do: Infrastructure

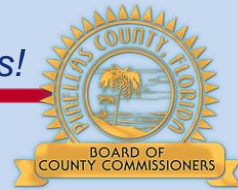
- Municipal Separate Storm Sewer Systems (MS4)/Response Section
 - Stormwater conveyance system inspection
 - Drainage structures
 - Open conveyance ditch
 - Stormwater pipe
 - Emergency calls/hazards
 - Removing debris from roadway
 - Temporary pothole patches





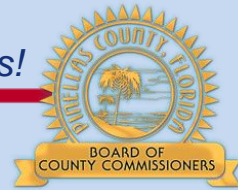
Ensure Public Health, Safety, and Welfare

- 2.5 Enhance pedestrian and bicycle safety
 - Comply with Americans with Disabilities Act (ADA) requirements
 - Maintain roadways and sidewalks to facilitate pedestrian and bicycle safety



Practice Superior Environmental Stewardship

- 3.3 Protect and improve the quality of our water, air, and other natural resources
 - Improve quality of surface water
 - Inspect and maintain stormwater pipes and structures (MS4 conveyance system)



Foster Continual Economic Growth and Vitality

- 4.2 Invest in communities that need the most
 - Focus MSTU paving program on roads in underserved communities
- 4.4 Invest in infrastructure to meet current and future needs
 - Continue repair and replacement of aging or damaged infrastructure

Opportunities

- Loss of institutional knowledge; lack of longevity

Doing Things:

- Provide staff with training opportunities (1.1)
- Offer interdepartmental promotional opportunities when available (1.2)
- Develop defined career ladders (1.2)

Opportunities

- Meeting citizen's anticipated level of service

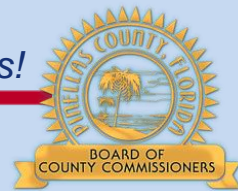
Doing Things:

- Define the expected level of service (5.3 & 5.4)
- Provide timely response to work requests (5.3)

2.1 Key Measures

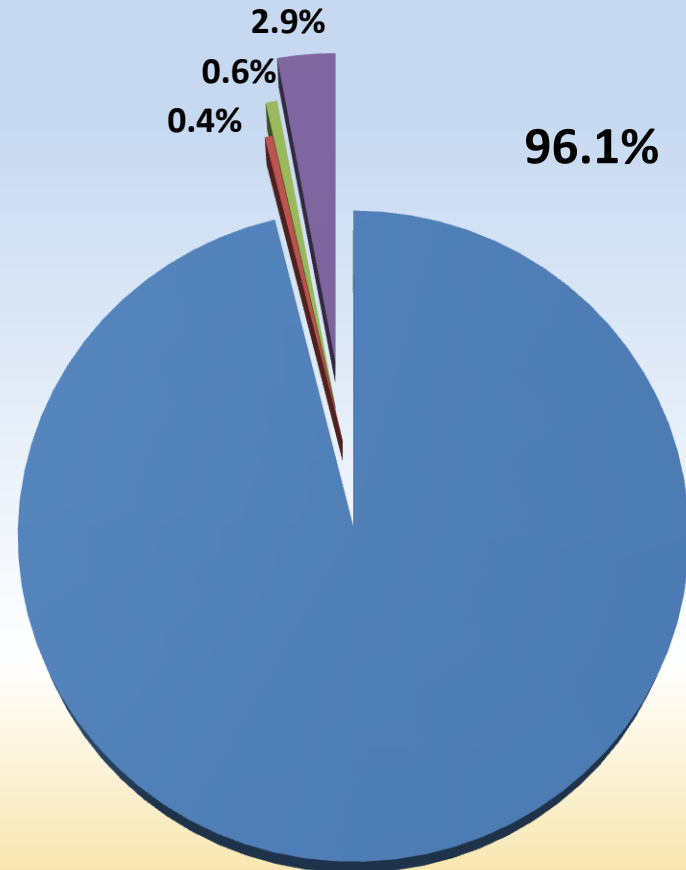
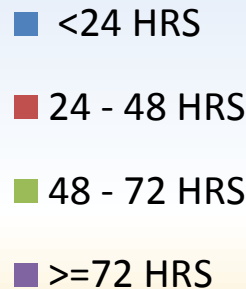
- Health index of bridges
 - County goal of 85 based on (FDOT) standard
 - Pinellas County bridges currently have an overall health index of 81.5





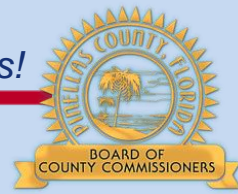
2.5 Key Measures

- Percent of potholes repaired within 72 hours of work requests on arterial and collector roadways



Timeframe Potholes Filled - FY15

Doing Things!



Thank you