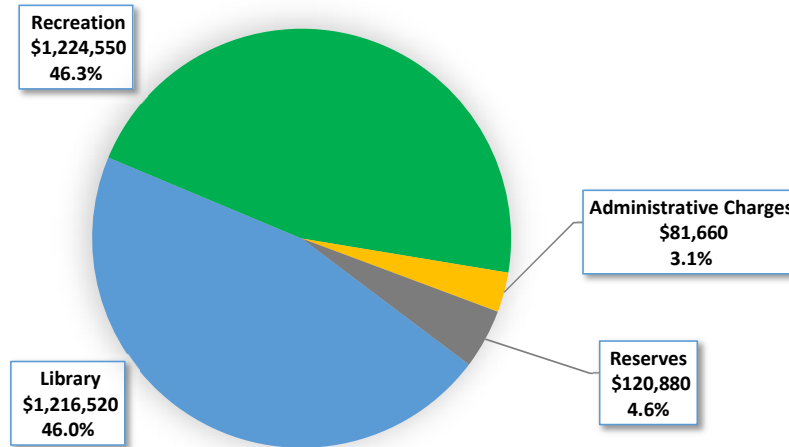
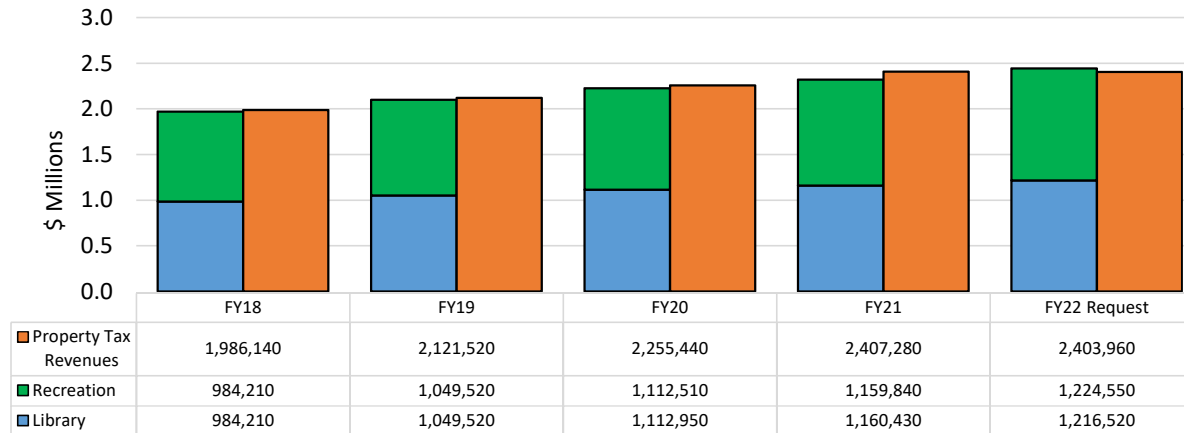


PALM HARBOR COMMUNITY SERVICES DISTRICT

FY22 Budget Request



Palm Harbor Community Services District Budget History



The Palm Harbor Community Services District is a special taxing district within unincorporated Pinellas County. This special taxing district, formed by the residents of Palm Harbor, was established for the purpose of providing library and recreation facilities and services to the residents of Palm Harbor. These facilities and services are funded by ad valorem taxes. Property owners within this district are levied a separate millage of 0.5 mills for this purpose, generating \$2,403,960 in estimated tax revenue for FY22. The maximum millage rate that can be levied is 0.5 mills.

Note: Administrative Charges include Tax Collector and Property Appraiser Commissions, Cost Allocation, and Other Charges.

Department: Palm Harbor Community Services District

FOSTER CONTINUAL GROWTH & VITALITY:

Support a vibrant community with recreation, arts, and culture to attract residents and visitors.

Program	Description	FY22 Total Program Allocation (\$)	FTE Count *
Library Operating	Library Services to residents of the Palm Harbor unincorporated community. Amount not to exceed ad valorem revenues collected.	\$1,216,520	18.5
Recreation Operating	Recreation Services to residents of the Palm Harbor unincorporated community. Amount not to exceed ad valorem revenues collected.	\$1,224,550	23.5
SUBTOTAL - PROGRAMS:		\$2,441,070	42.0
Administrative charges	Tax Collector and Property Appraiser Commissions, Full Cost Allocation, and Debt Service	\$81,660	
SUBTOTAL - EXPENDITURES:		\$2,522,730	
Reserves	Reserves	\$120,880	
GRAND TOTALS:		\$2,643,610	42.0

NOTE: This budget is supported by a separate property tax levy for the Palm Harbor Community Services District.

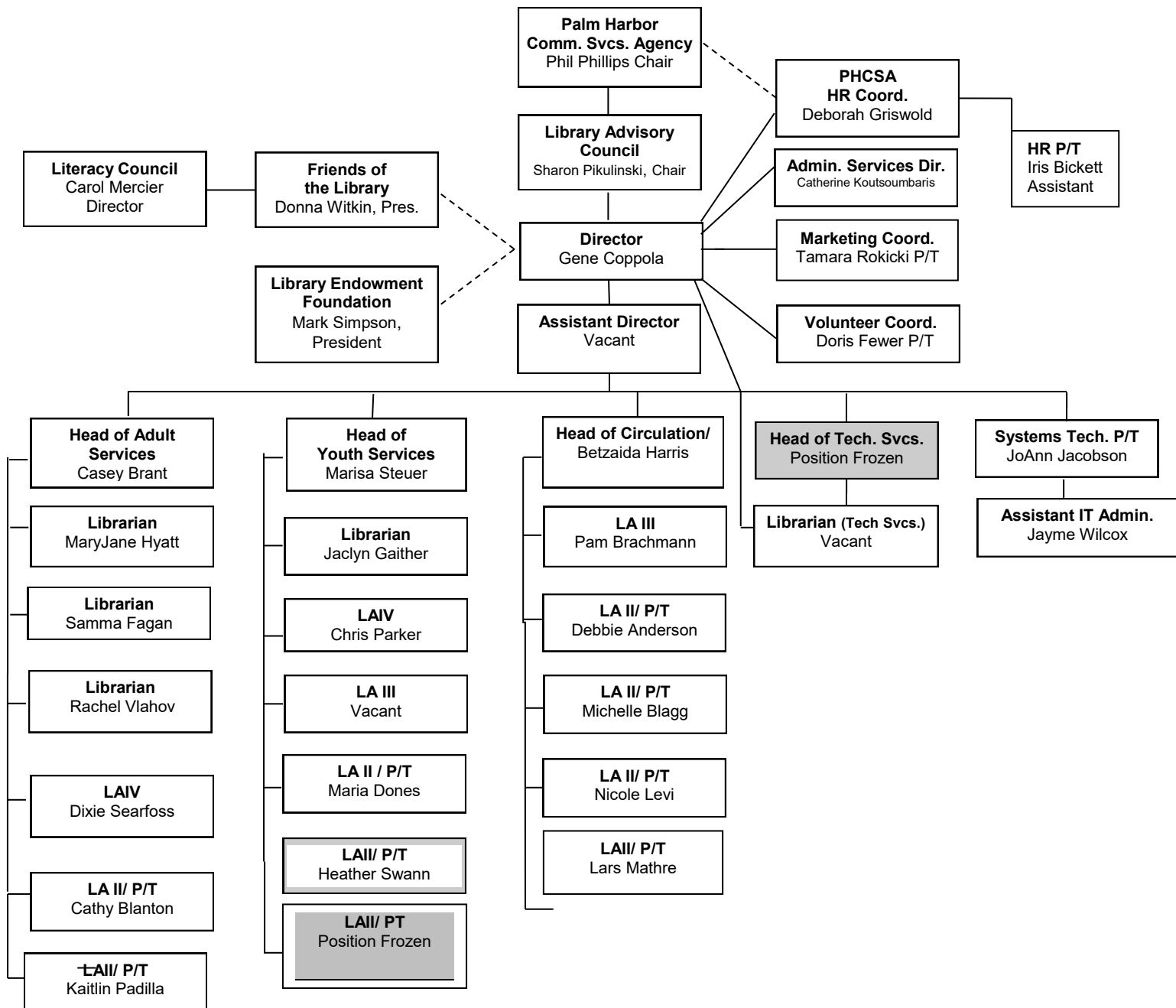
*** FTE are not County employees**

Library - 13 full-time & 11 part-time positions proposed for FY22

Recreation - 17 full-time & 13 part-time positions proposed for FY22



Palm Harbor Library Organizational Chart MARCH 2021





CSA PH ORGANIZATIONAL CHART 2021

