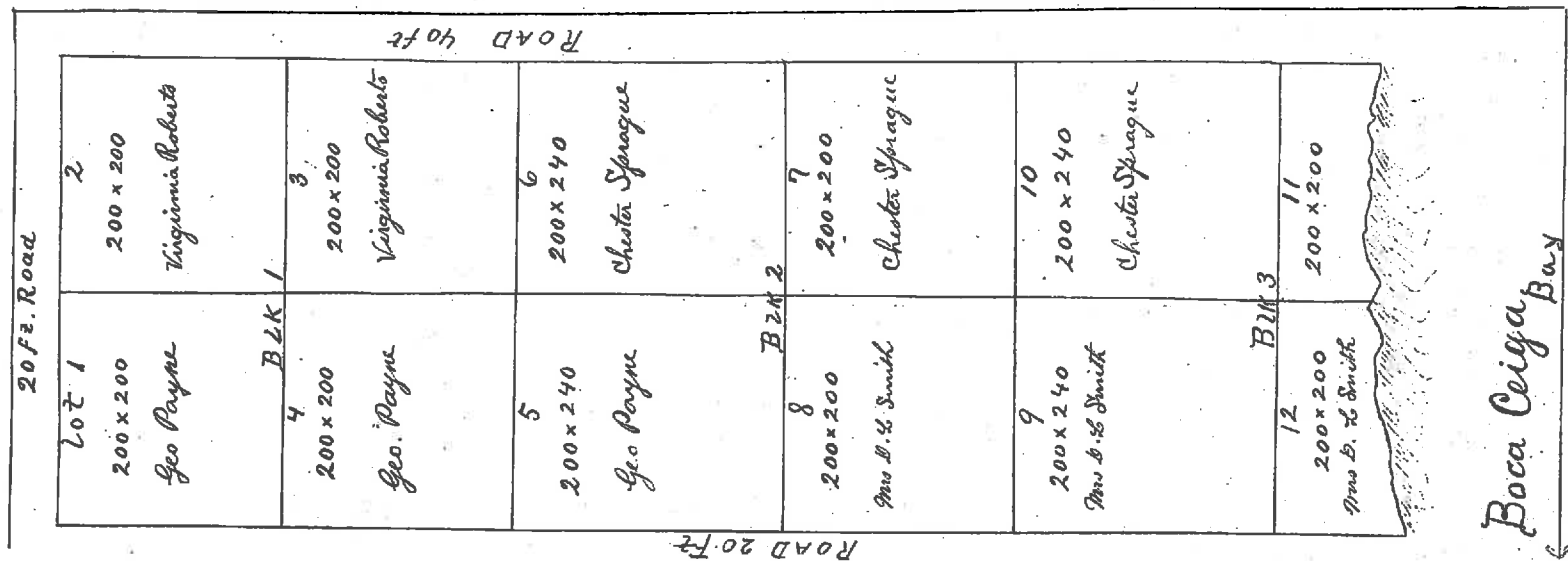
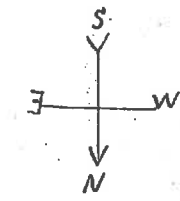
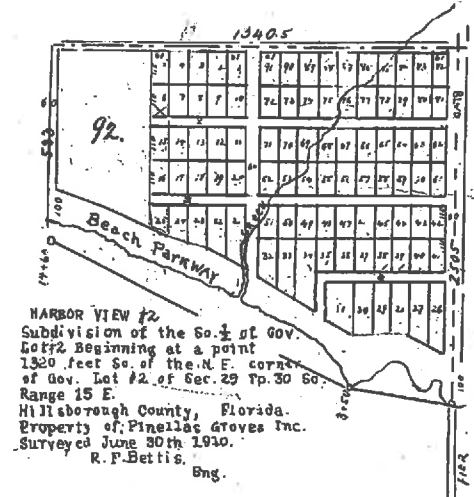


JOSEPH'S PAID'S SUB. DIVISION OF THE
NORTH-460 FEET OF THE SE 1/4 OF THE SW 1/4 OF SEC 34, T. 31, R. 16 - E
COUNTY OF HILLSBOROUGH, FLA



Filed: March 31st 1910.
C. M. Knott,
Ch. Ct. Cl.



HARBOR VIEW #2
Subdivision of the So. 1/2 of Gov. Lot #2 beginning at a point 1320 feet So. of the N.E. corner of Gov. Lot #2 of Sec. 29 Tp. 30 S. Range 15 E. Hillsborough County, Florida. Property of: Pineleaf Groves Inc. Surveyed June 30th 1930. R. P. Bettis, Eng.

Filed July 5th 1910.
C. M. Knott,
Ch. Ct. Cl.

RESOLUTION OF PARTIAL VACATION OF
Harbor View #2
SUBDIVISION HAS BEEN RECORDED IN
D. R. BOOK 5188 PAGE 209 ✓
ON 5-8-1981
KARLEEN F. De BLAKER
Clerk of the Circuit Court
By: Patricia Burke Deputy Clerk

RESOLUTION OF PARTIAL VACATION OF
Harbor View #2 ✓
SUBDIVISION HAS BEEN RECORDED IN
O. R. BOOK 5042 PAGE 1223
ON 7-2-1980
HAROLD MULLENDORE
Clerk of the Circuit Court
By: Patricia Burke Deputy Clerk

RESOLUTION OF PARTIAL VACATION OF
Harbor View #2
SUBDIVISION HAS BEEN RECORDED IN
O. R. BOOK 3372 PAGE 515
ON 10-16-2002
KARLEEN F. De BLAKER
Clerk of the Circuit Court
By: James Randall Deputy Clerk