

Board of County Commissioners

Case #Z/LU-21-10-19

December 10, 2019



Our Vision:
To Be the Standard for
Public Service in America.

Request

Subject Area

4.55 acres – Adjacent to Anclote River off Anclote Rd in NW Pinellas County

Future Land Use Amendment

From: Residential Low (RL)

To: Commercial Recreation (CR)

Zoning Atlas Amendment

From: R-A, R-E, & R-4 (various residential districts)

To: CR, (Commercial Recreation)

Existing Use

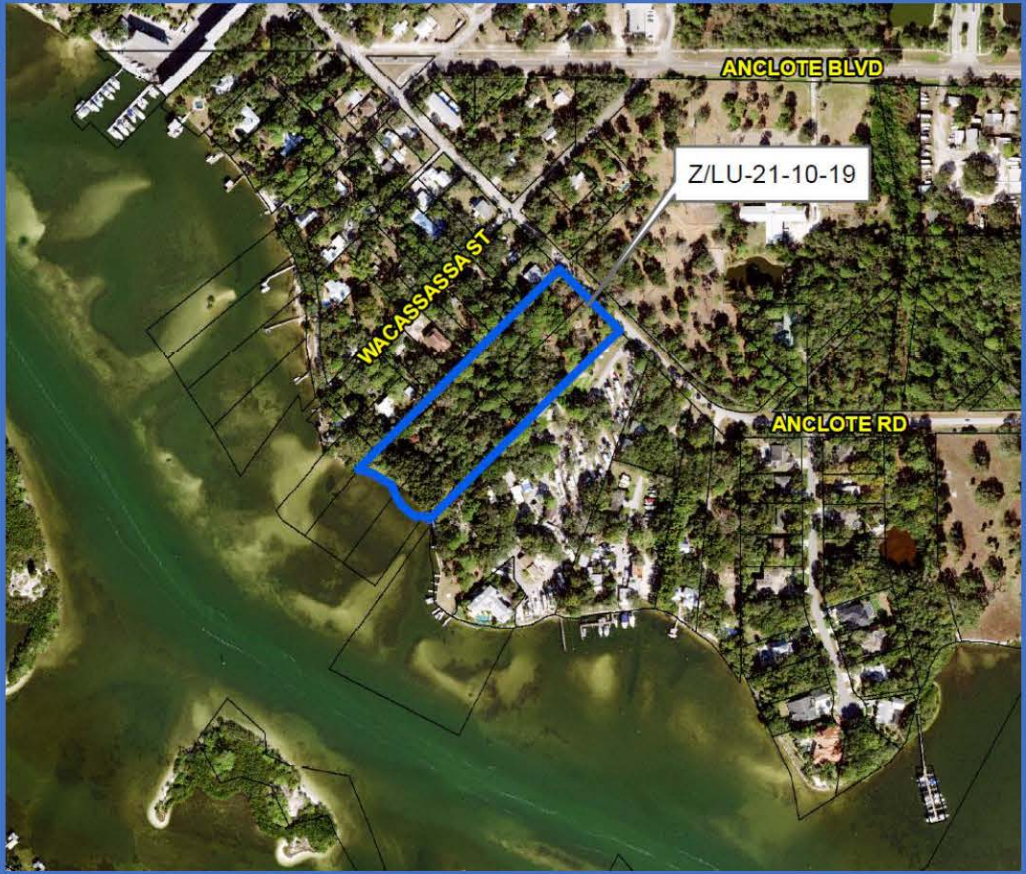
Vacant

Proposed Use

Expansion of adjacent RV park

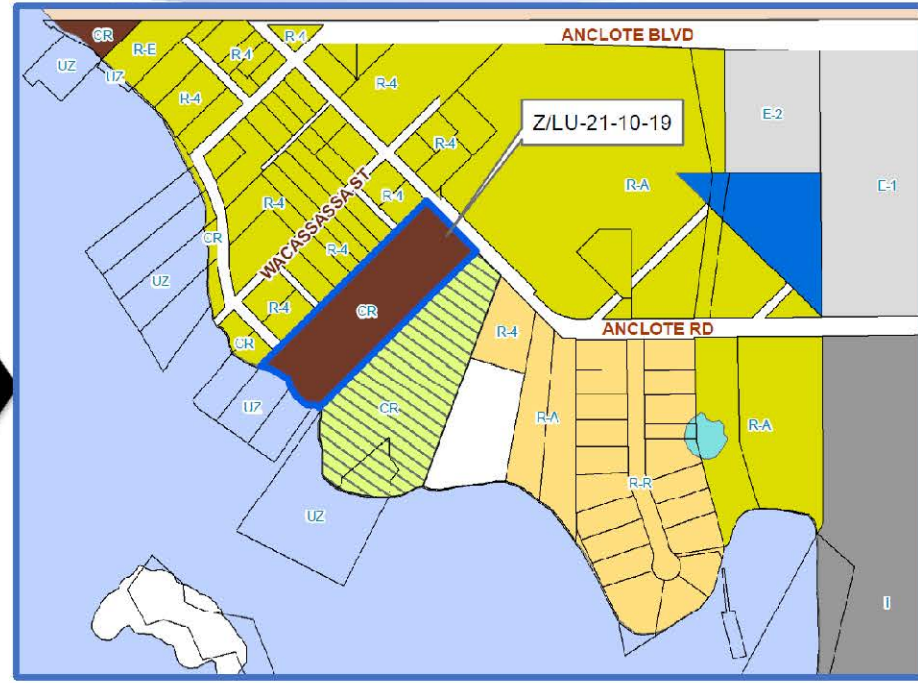
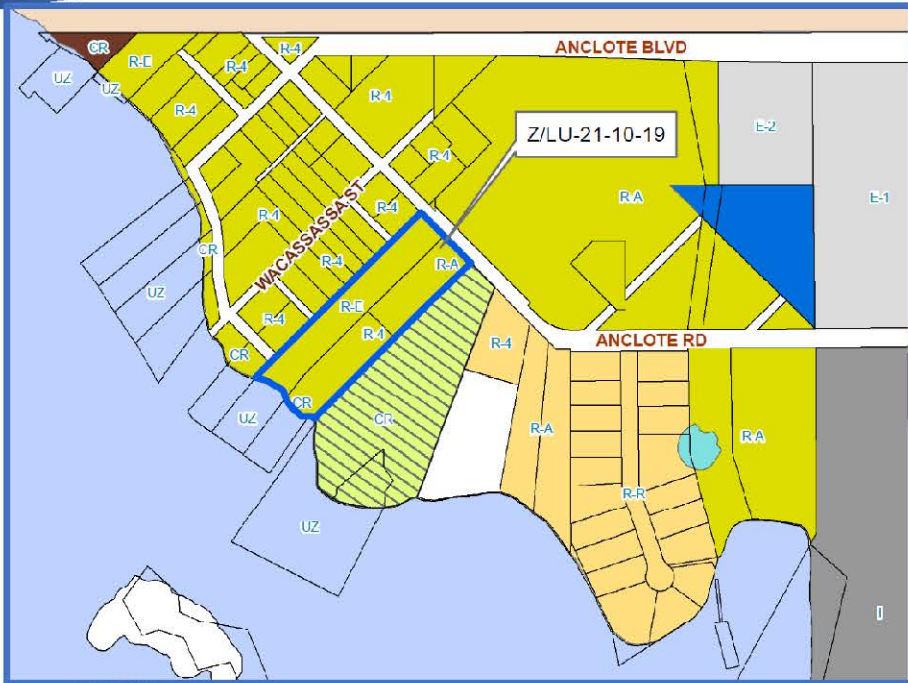


Location

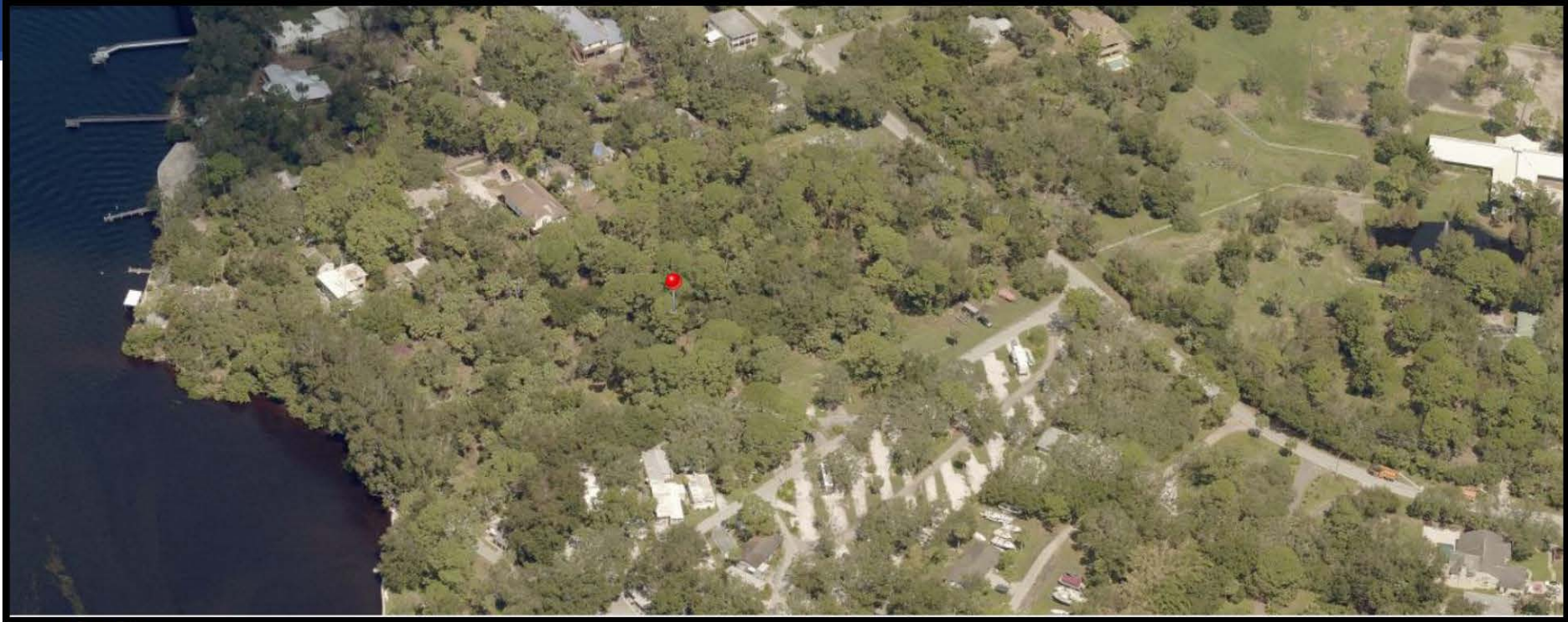


Our Vision: To Be the Standard for Public Service in America

Zoning/Future Land Use



Site Photos



Site Photos



Looking northwest and southeast along Anclole Road.

Site Photos



Property across the street



Adjacent RV park

Additional Information



Commercial Recreation

Appropriate for RV parks and campgrounds

Allows up to 10 RV sites per acre

Does not permit permanent residential use

Allows for other recreation-based uses such as marinas and boat ramps



Recommendation

Proposed amendments are appropriate

Near similar commercial recreation uses

Generally compatible with the area

Consistent with the Comprehensive Plan

Staff recommends Approval

Local Planning Agency – Recommended Approval (6-0 vote)

