

CU-10-06-18
Location Map

Conditional Use to allow a private helipad, and related variances to allow a 37' x 37' Touchdown Area where 100' x 100' is required and a 74' x 74' Primary Surface Area where 300' x 300' is required.



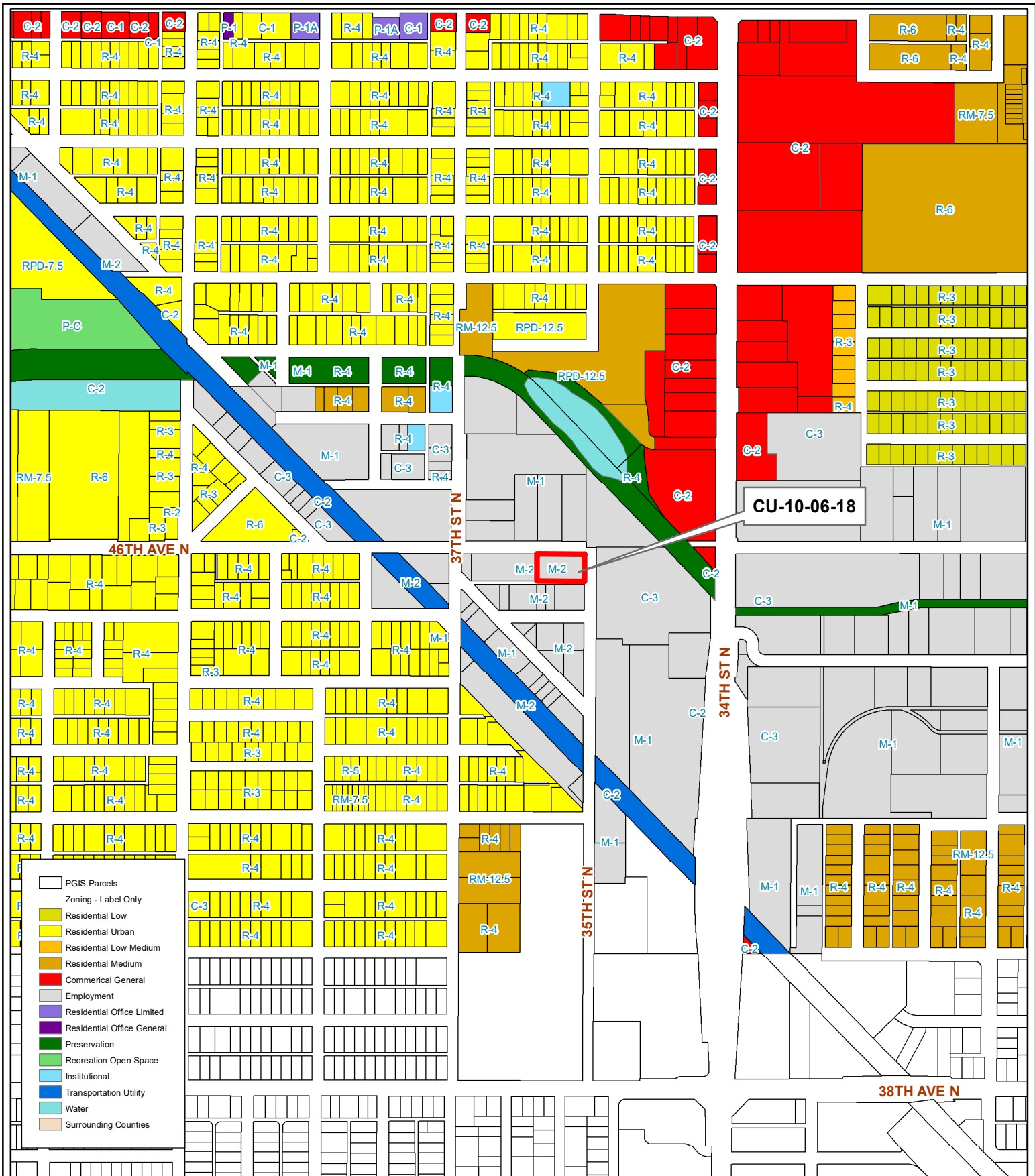
03/31/16/61722/001/0090

Prepared by: Pinellas County Planning Department



Date: 5/1/2018

1 inch = 4.5 miles



CU-10-06-18
Current Land Use & Zoning

Conditional Use to allow a private helipad, and related variances to allow a 37' x 37' Touchdown Area where 100' x 100' is required and a 74' x 74' Primary Surface Area where 300' x 300' is required.

03/31/16/61722/001/0090

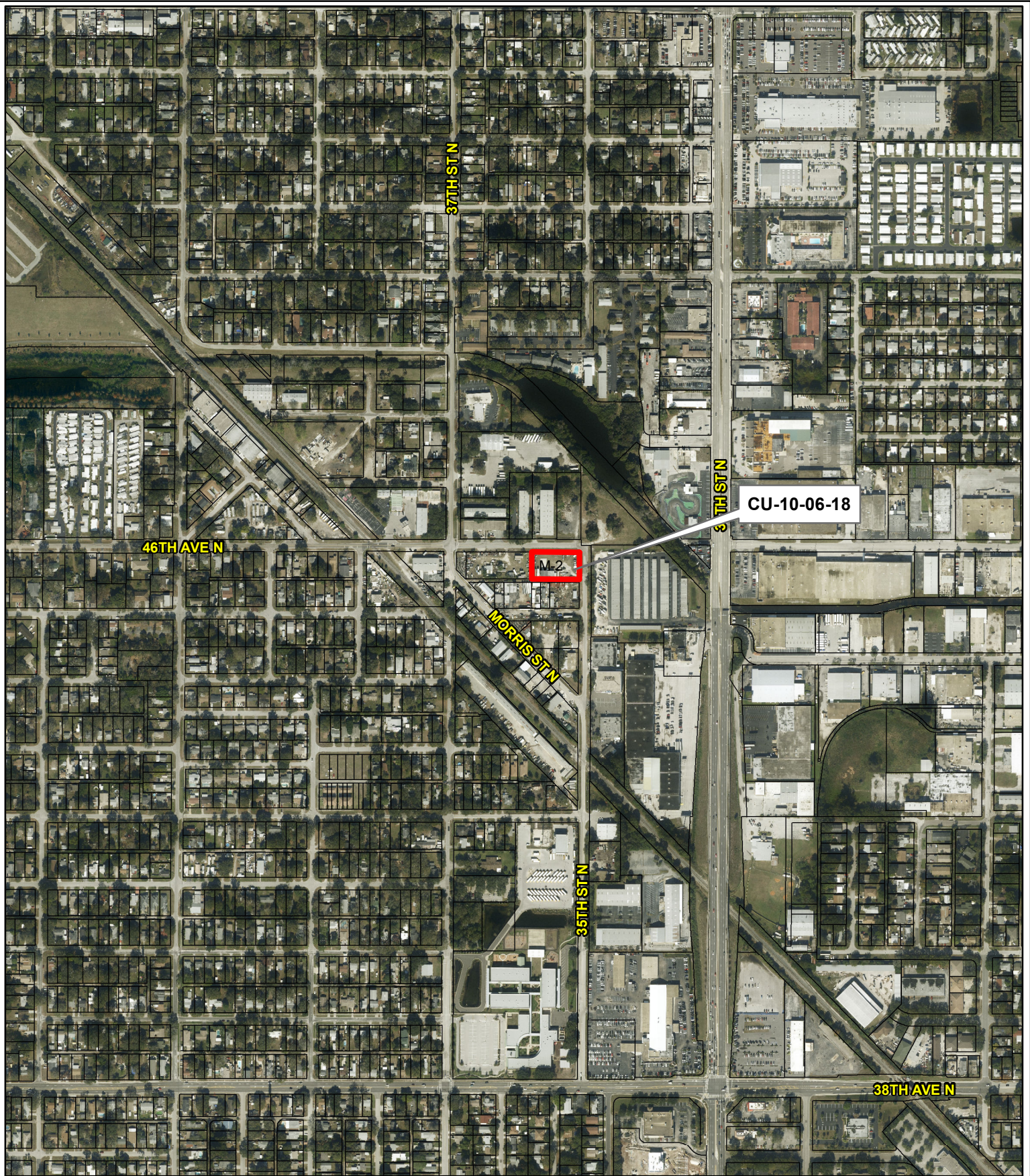
Prepared by: Pinellas County Planning Department



Date: 5/1/2018



1 inch = 0.12 miles



CU-10-06-18

Aerial Map

Conditional Use to allow a private helipad, and related variances to allow a 37' x 37' Touchdown Area where 100' x 100' is required and a 74' x 74' Primary Surface Area where 300' x 300' is required.

03/31/16/61722/001/0090

Prepared by: Pinellas County Planning Department



Date: 5/1/2018



1 inch = 0.12 miles



CU-10-06-18
Municipal Map

Conditional Use to allow a private helipad, and related variances to allow a 37' x 37' Touchdown Area where 100' x 100' is required and a 74' x 74' Primary Surface Area where 300' x 300' is required.

03/31/16/61722/001/0090

Prepared by: Pinellas County Planning Department



Date: 5/1/2018



1 inch = 0.12 miles