

ZON-20-5

Location Map

Zoning
From: C-2, General Commercial & Services
To: R-4, One, Two, & Three Family Residential



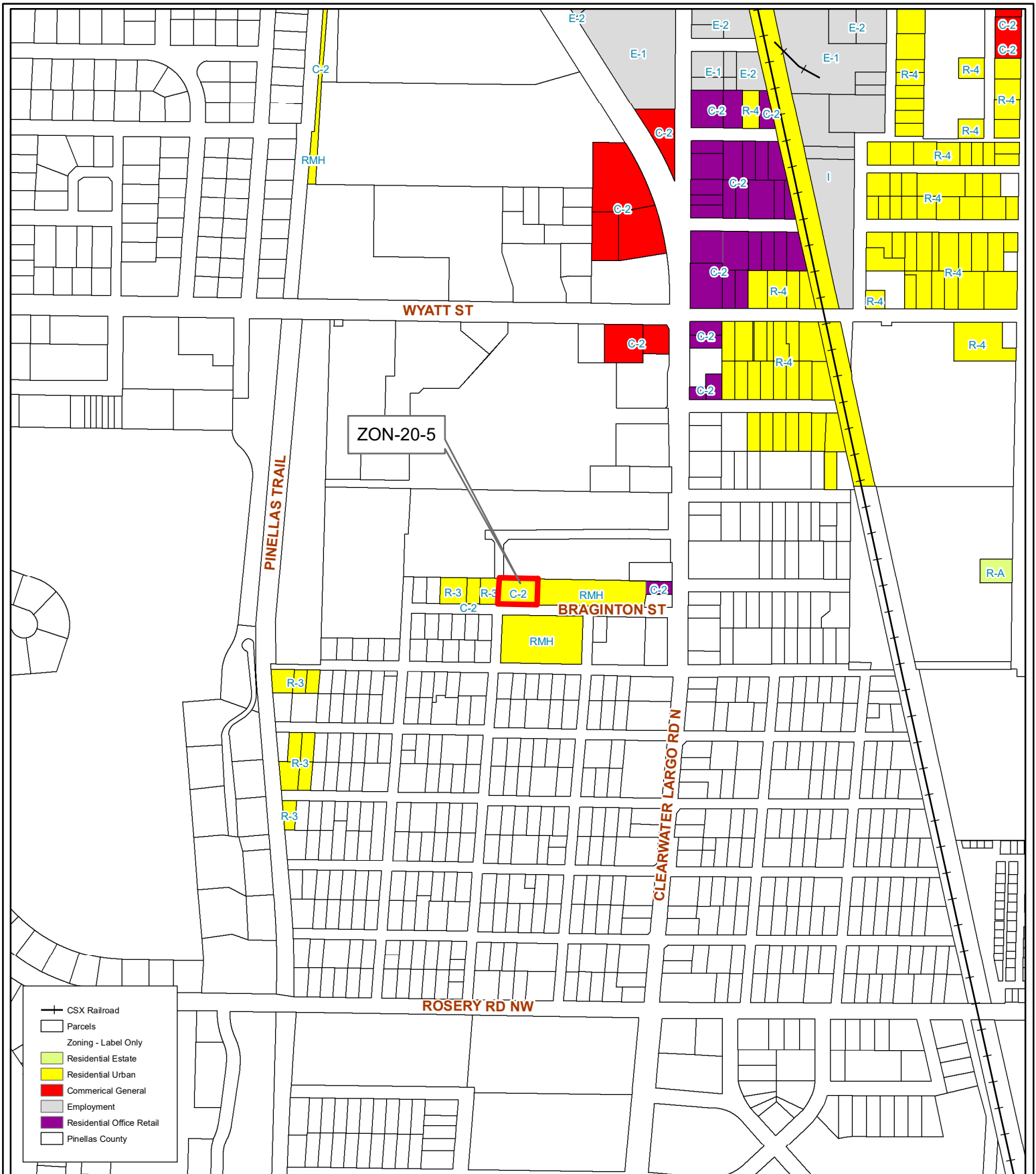
28/29/15/59526/000/0130

Prepared by: Pinellas County Planning Department



Date: 5/28/2020

1 inch = 4.5 miles



- CSX Railroad
- Parcels
- Zoning - Label Only
- Residential Estate
- Residential Urban
- Commercial General
- Employment
- Residential Office Retail
- Pinellas County

ZON-20-5

Current Zoning

Zoning

From: C-2, General Commercial & Services

To: R-4, One, Two, & Three Family Residential

28/29/15/59526/000/0130

Prepared by: Pinellas County Planning Department



Date: 5/28/2020



1 inch = 0.09 miles



ZON-20-5

Aerial Map

Zoning **From:** C-2, General Commercial & Services
To: R-4, One, Two, & Three Family Residential

28/29/15/59526/000/0130

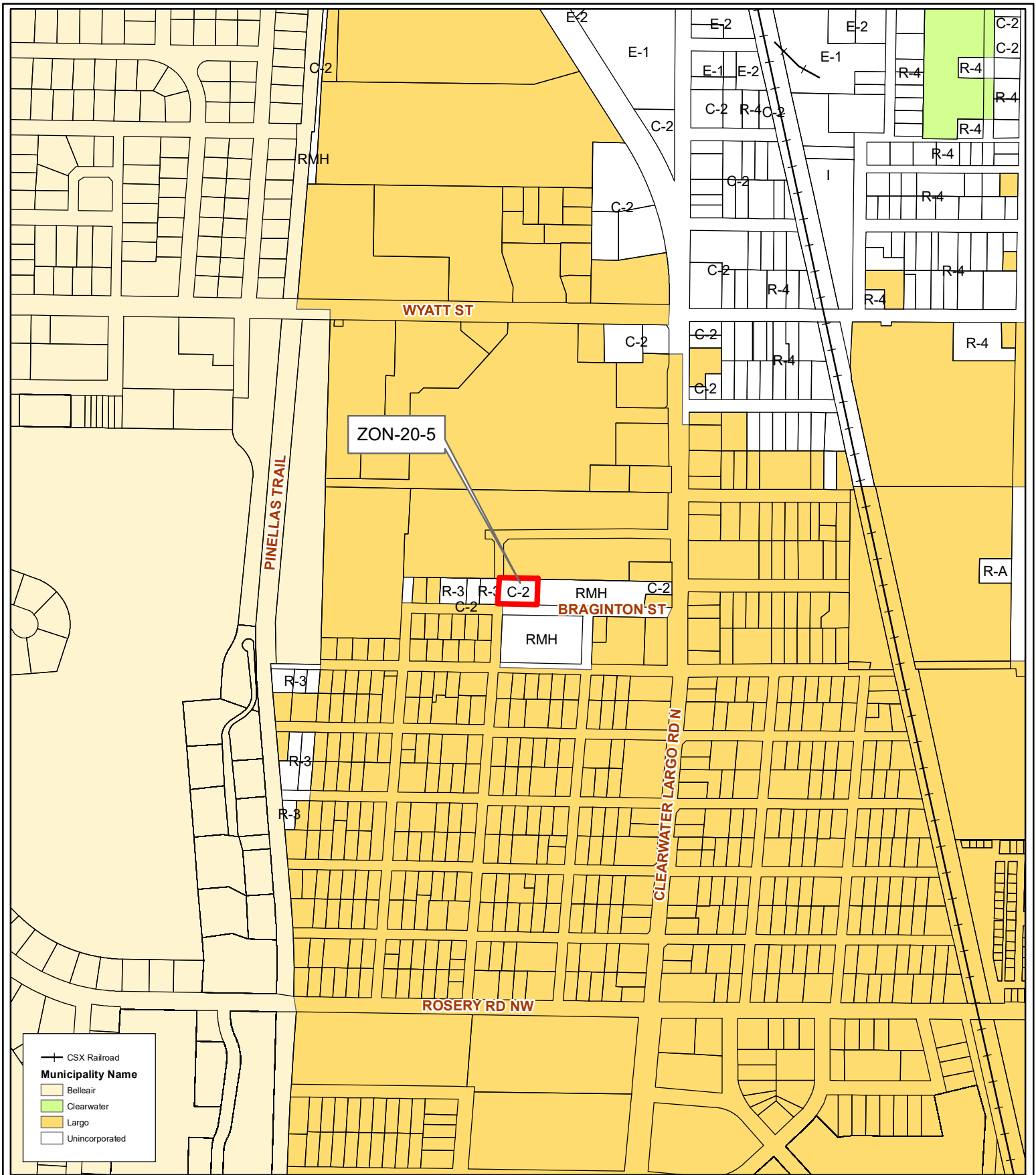
Prepared by: Pinellas County Planning Department



Date: 5/28/2020



1 inch = 0.09 miles



CSX Railroad
Municipality Name
 Belleair
 Clearwater
 Largo
 Unincorporated

ZON-20-5

Municipal Map

Zoning

From: C-2, General Commercial & Services

To: R-4, One, Two, & Three Family Residential

28/29/15/59526/000/0130

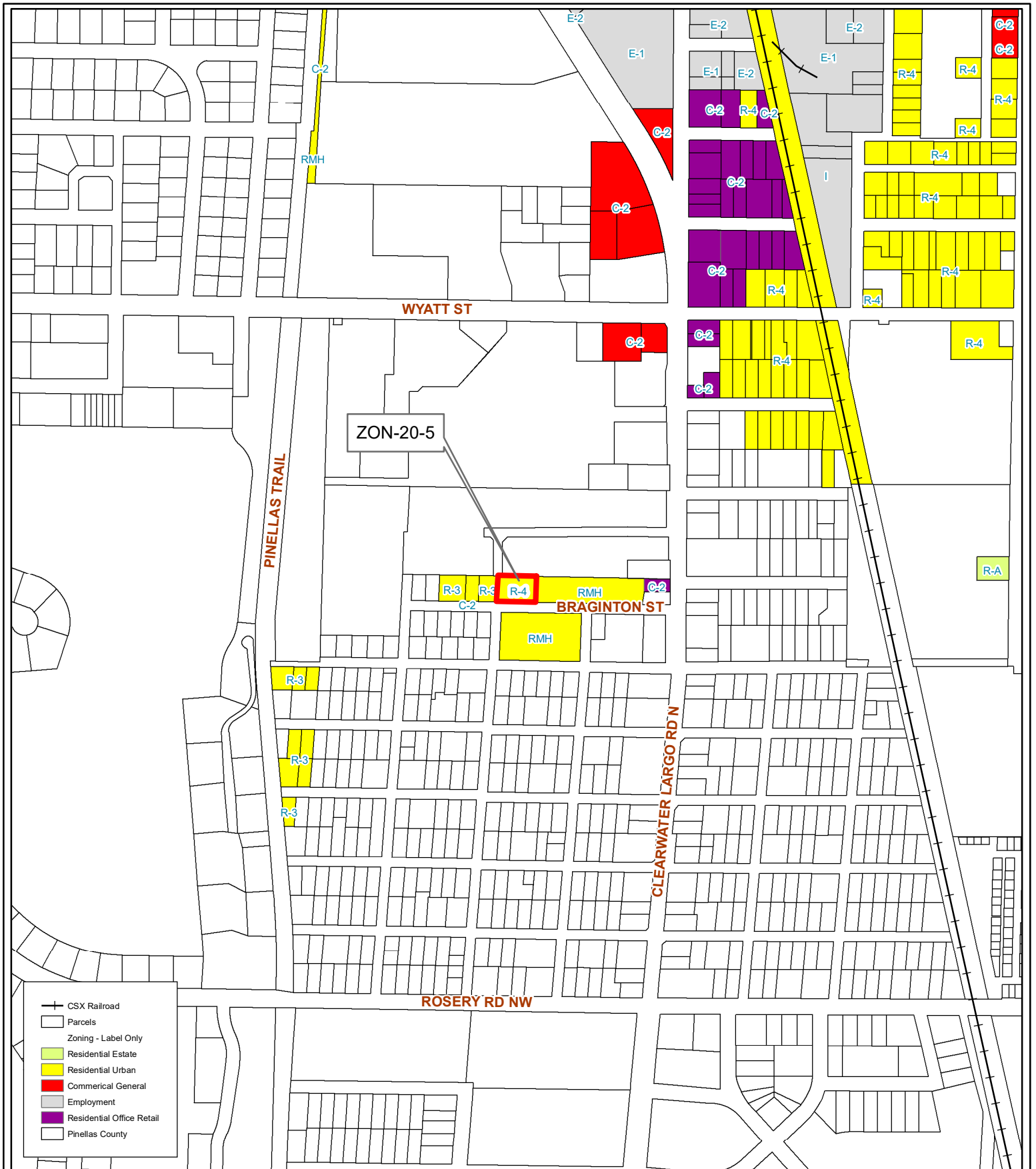
Prepared by: Pinellas County Planning Department



Date: 5/28/2020



1 inch = 0.09 miles



- CSX Railroad
- Parcels
- Zoning - Label Only
- Residential Estate
- Residential Urban
- Commercial General
- Employment
- Residential Office Retail
- Pinellas County

ZON-20-5

Proposed Zoning

Zoning

From: C-2, General Commercial & Services

To: R-4, One, Two, & Three Family Residential

28/29/15/59526/000/0130

Prepared by: Pinellas County Planning Department



Date: 5/28/2020



1 inch = 0.09 miles