

Map 1 - Location

CASE #: CW16-27

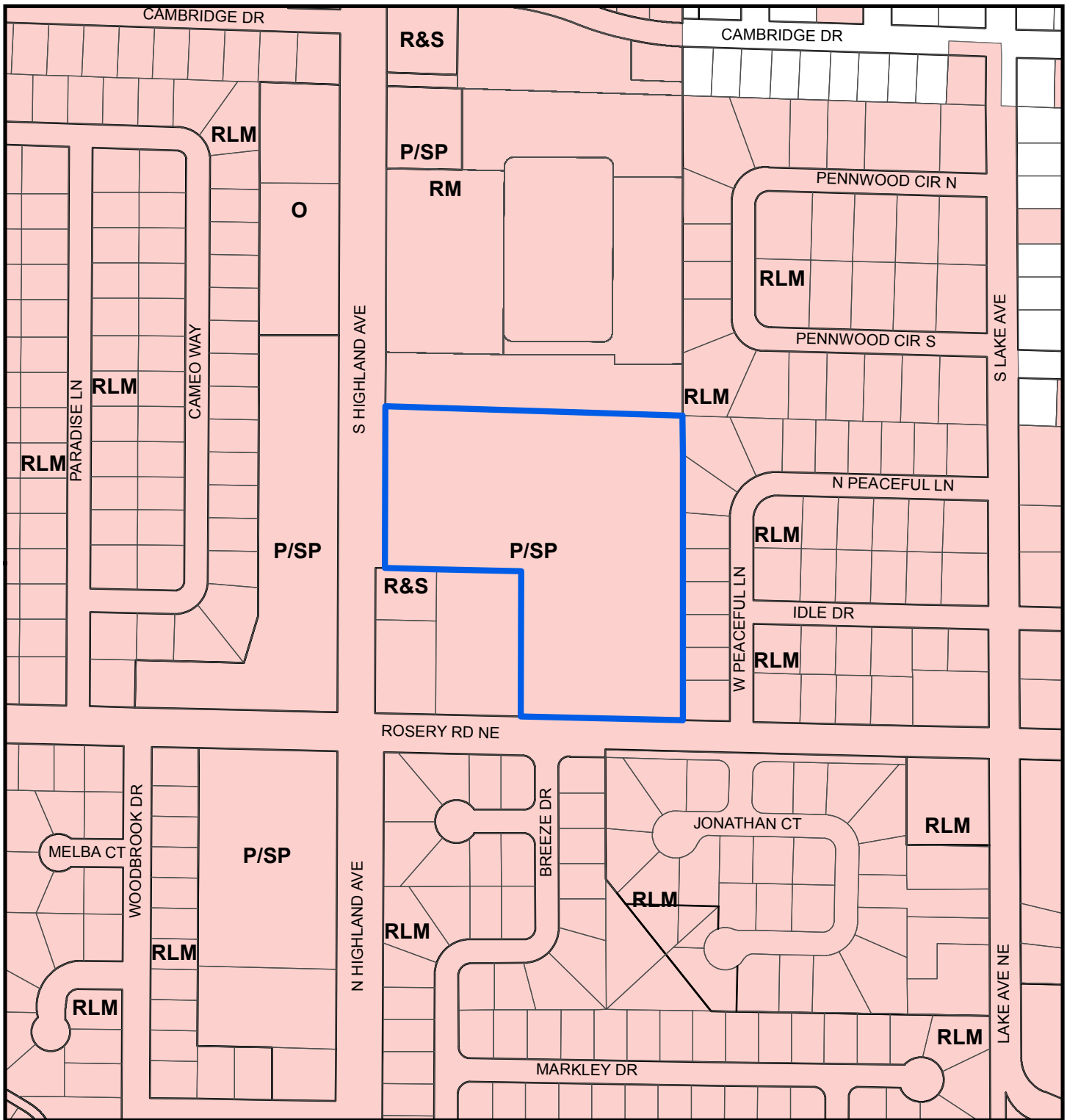
FROM: Public/Semi-Public

AREA: 7.4 Acres

JURISDICTION: Largo

TO: Residential Low Medium





Map 2 - Current Countywide Plan Map & Jurisdictional Map

CASE #: CW16-27

FROM: Public/Semi-Public

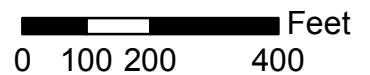
AREA: 7.4 Acres

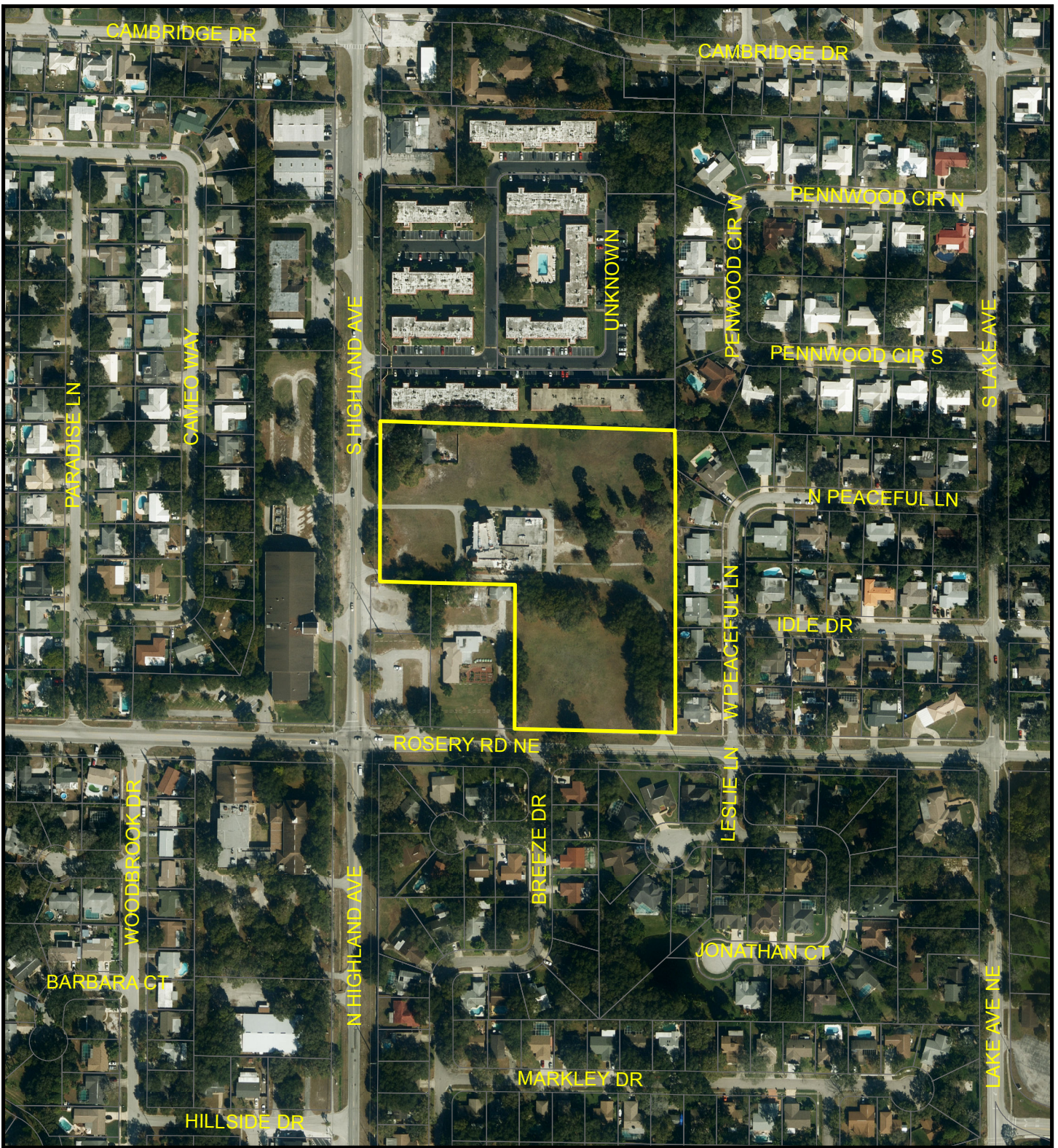
JURISDICTION: Largo

TO: Residential Low Medium

LEGEND:

- Largo
- Unincorporated





Map 3 - Aerial

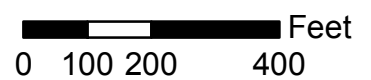
CASE #: CW16-27

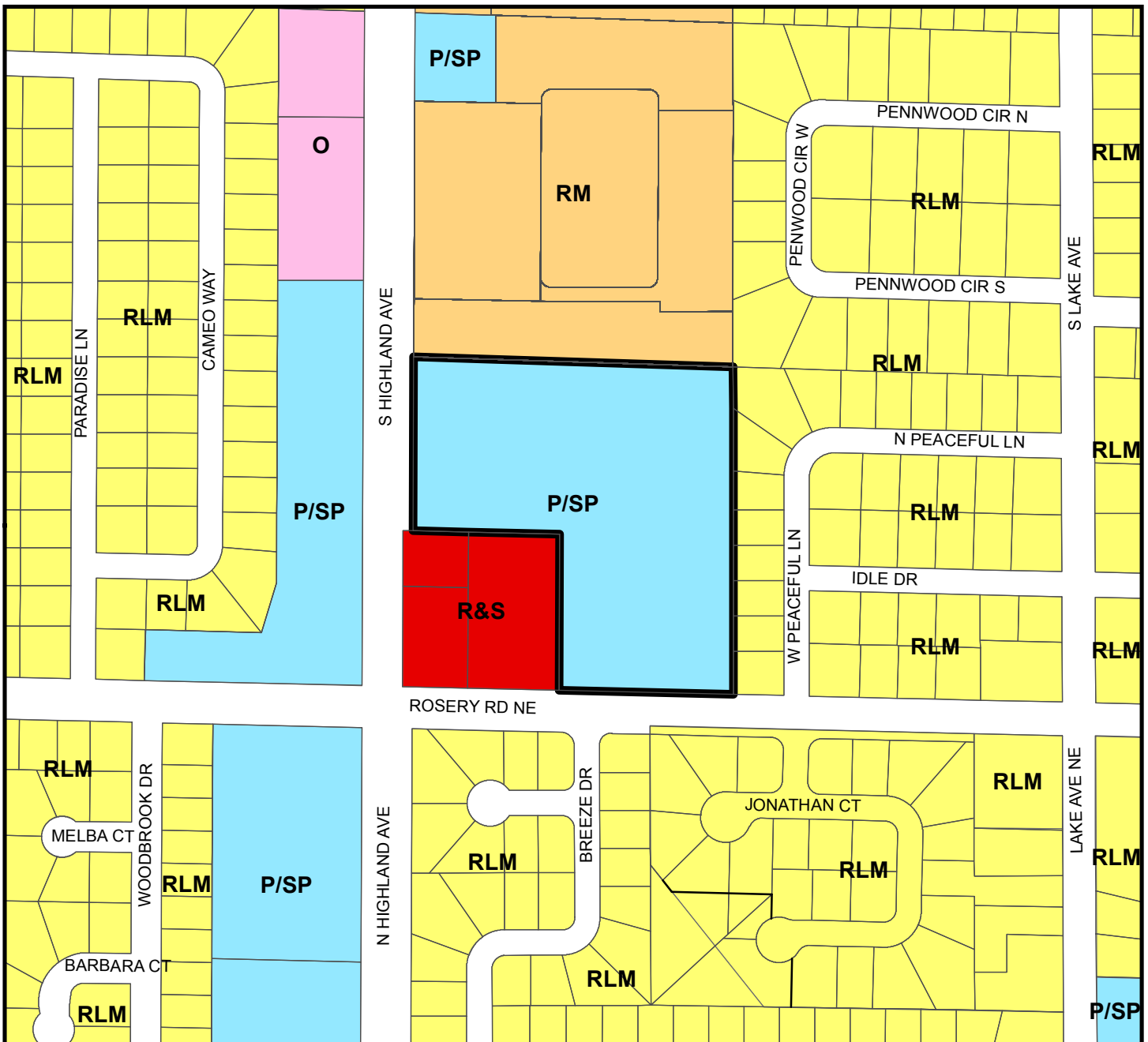
FROM: Public/Semi-Public

AREA: 7.4 Acres

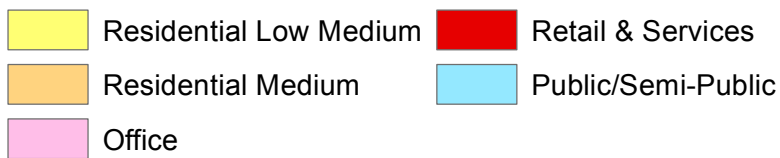
JURISDICTION: Largo

TO: Residential Low Medium





Countywide Plan Map Categories



Map 4 - Current Countywide Plan Map

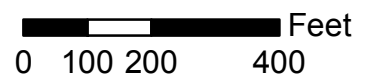
CASE #: CW16-27

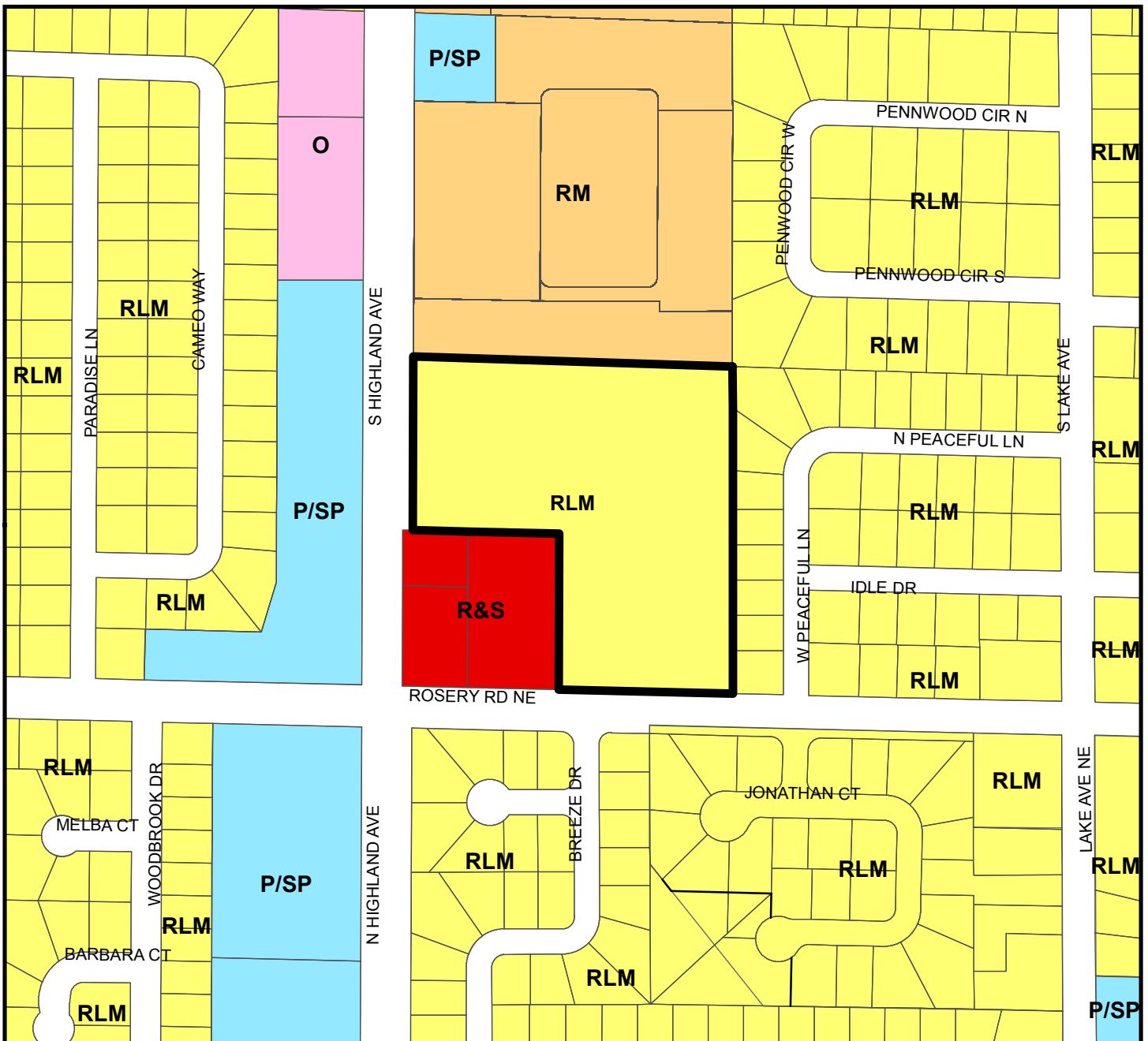
FROM: Public/Semi-Public

AREA: 7.4 Acres

JURISDICTION: Largo

TO: Residential Low Medium





Countywide Plan Map Categories

- Residential Low Medium
- Residential Medium
- Office
- Retail & Services
- Public/Semi-Public

Map 5 - Proposed Countywide Plan Map

CASE #: CW16-27

FROM: Public/Semi-Public

AREA: 7.4 Acres

JURISDICTION: Largo

TO: Residential Low Medium

