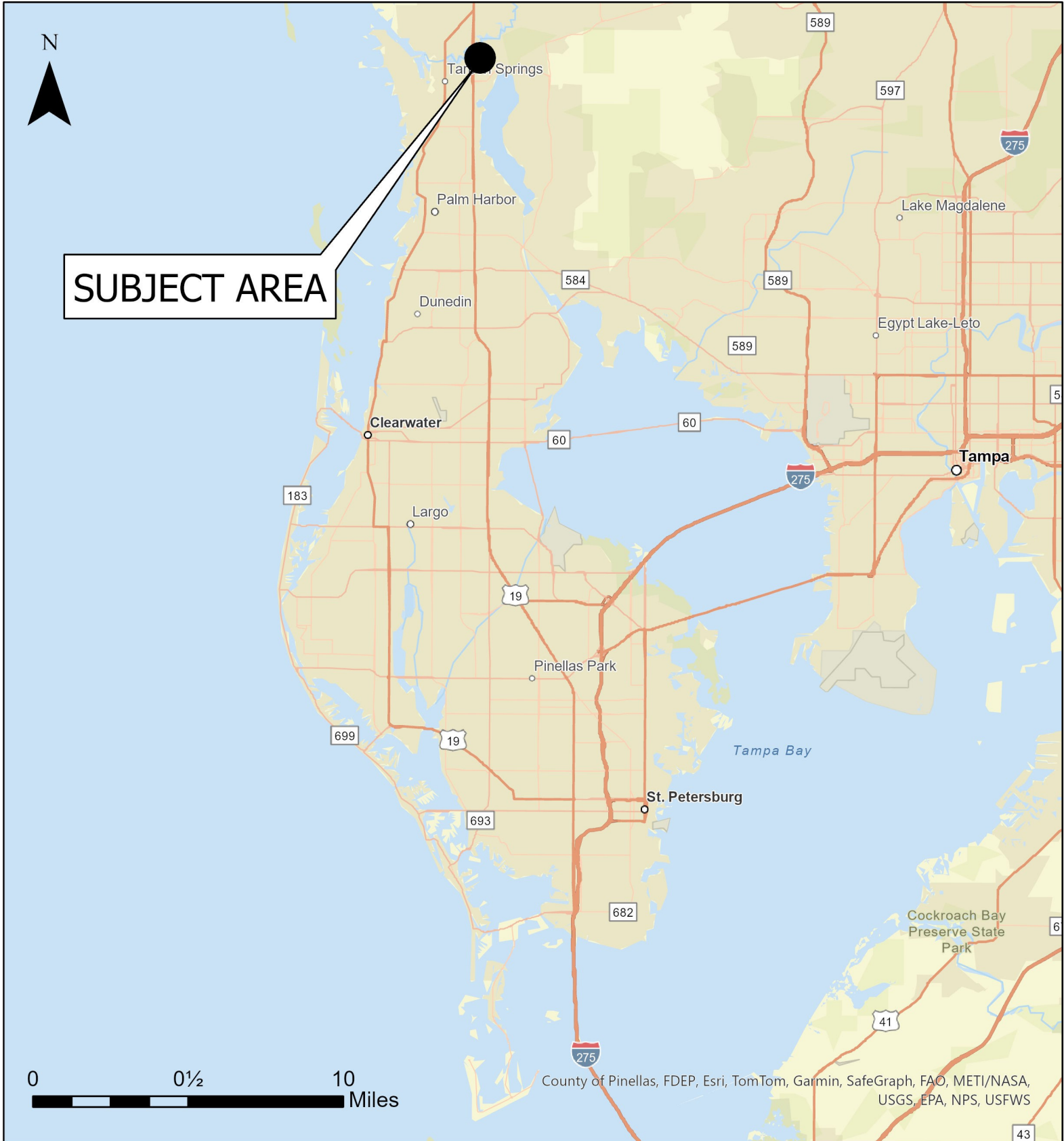


Case CW24-20

Map 1: Location Map



JURISDICTION: Tarpon Springs

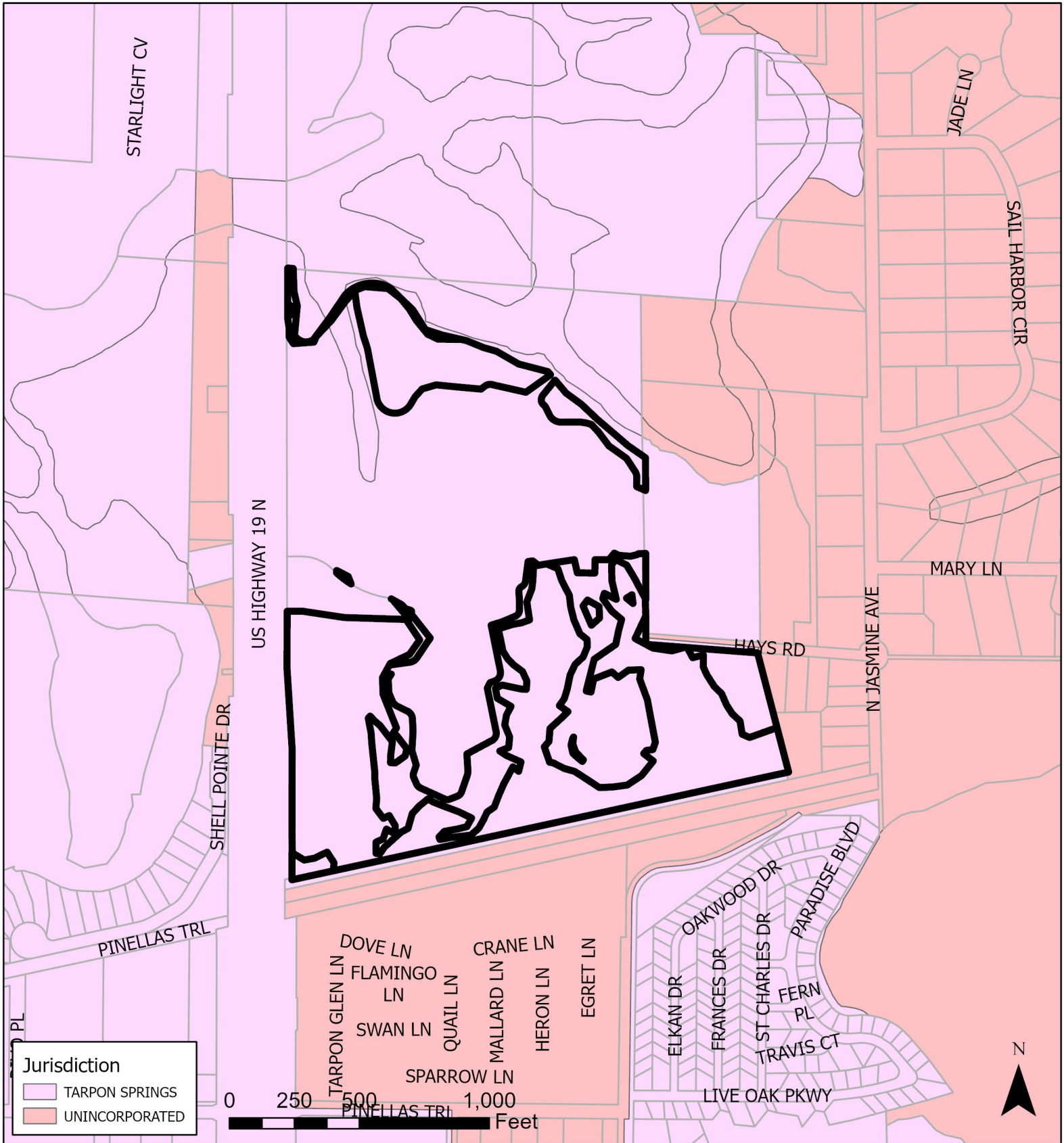
AREA: 35.7 acres m.o.l.

**FROM: Retail & Services, Office,
and Preservation**

TO: Preservation and Recreation/Open Space

Case CW24-20

Map 2: Jurisdictional Map



JURISDICTION: Tarpon Springs **FROM:** Retail & Services, Office, and Preservation
AREA: 35.7 acres m.o.l. **TO:** Preservation and Recreation/Open Space

Case CW24-20

Map 3: Aerial Map

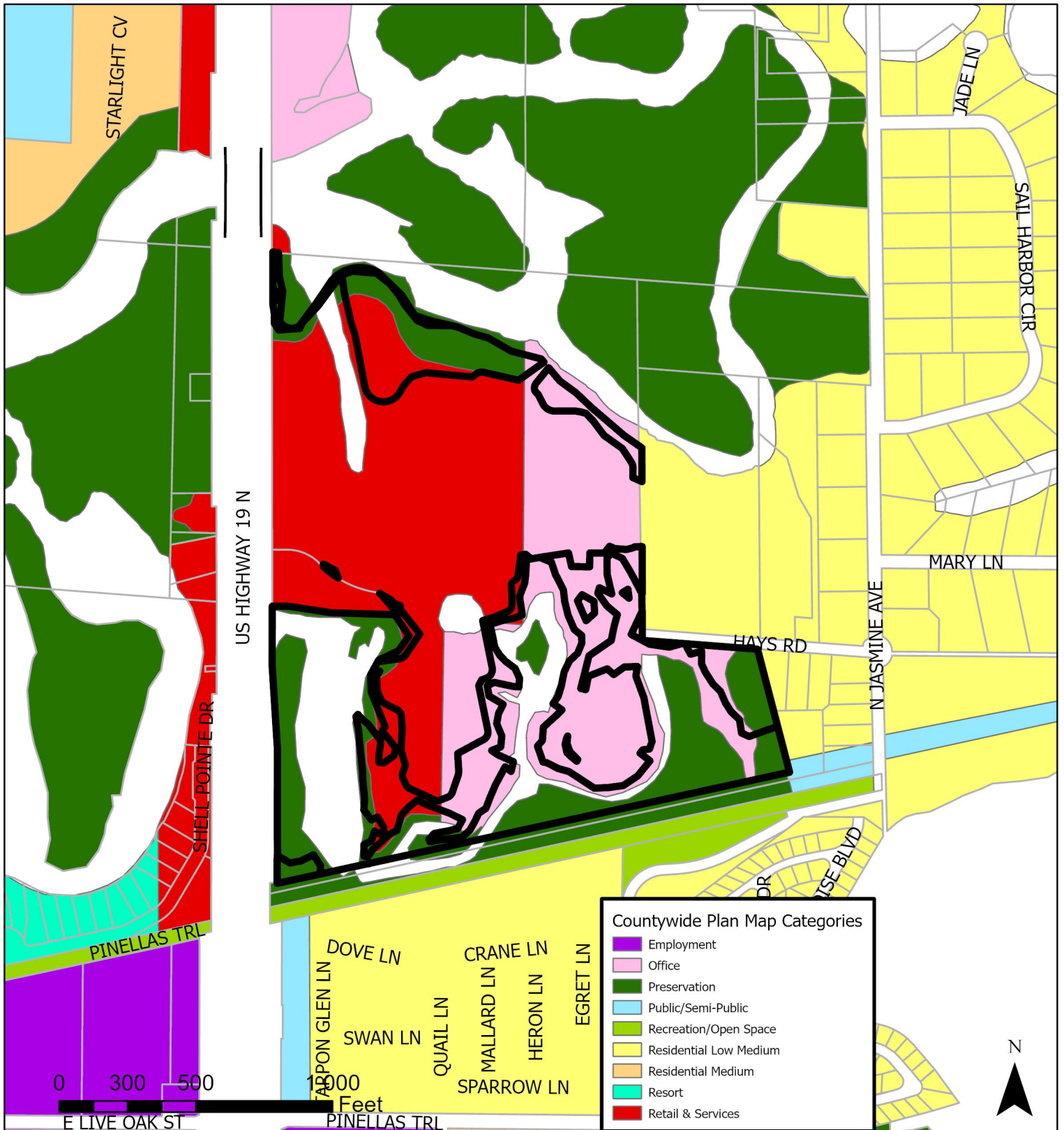


JURISDICTION: Tarpon Springs

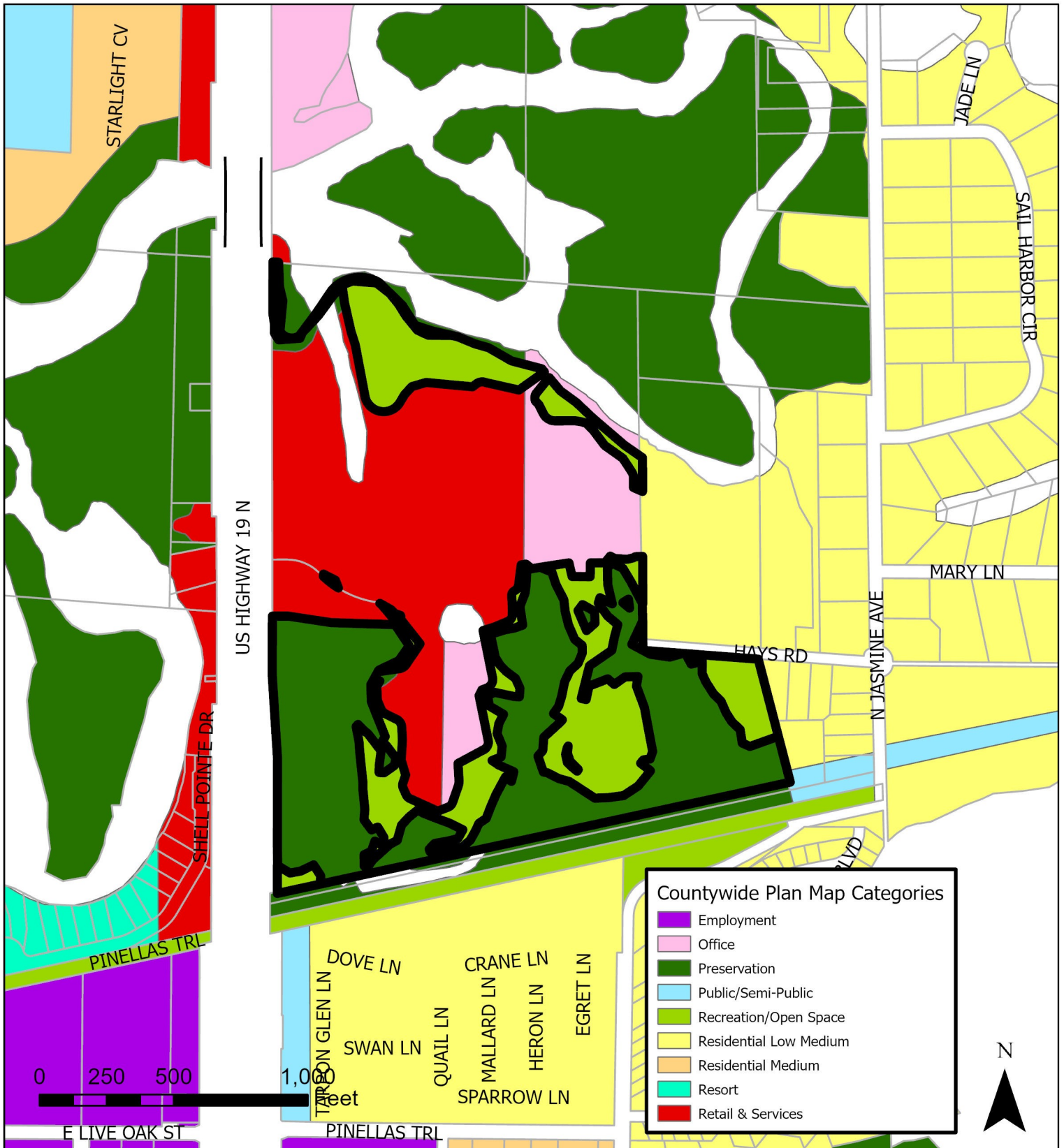
FROM: Retail & Services, Office, and Preservation

AREA: 35.7 acres m.o.l.

TO: Preservation and Recreation/Open Space



JURISDICTION: Tarpon Springs **FROM:** Retail & Services, Office, and Preservation
AREA: 35.7 acres m.o.l **TO:** Preservation and Recreation/Open Space

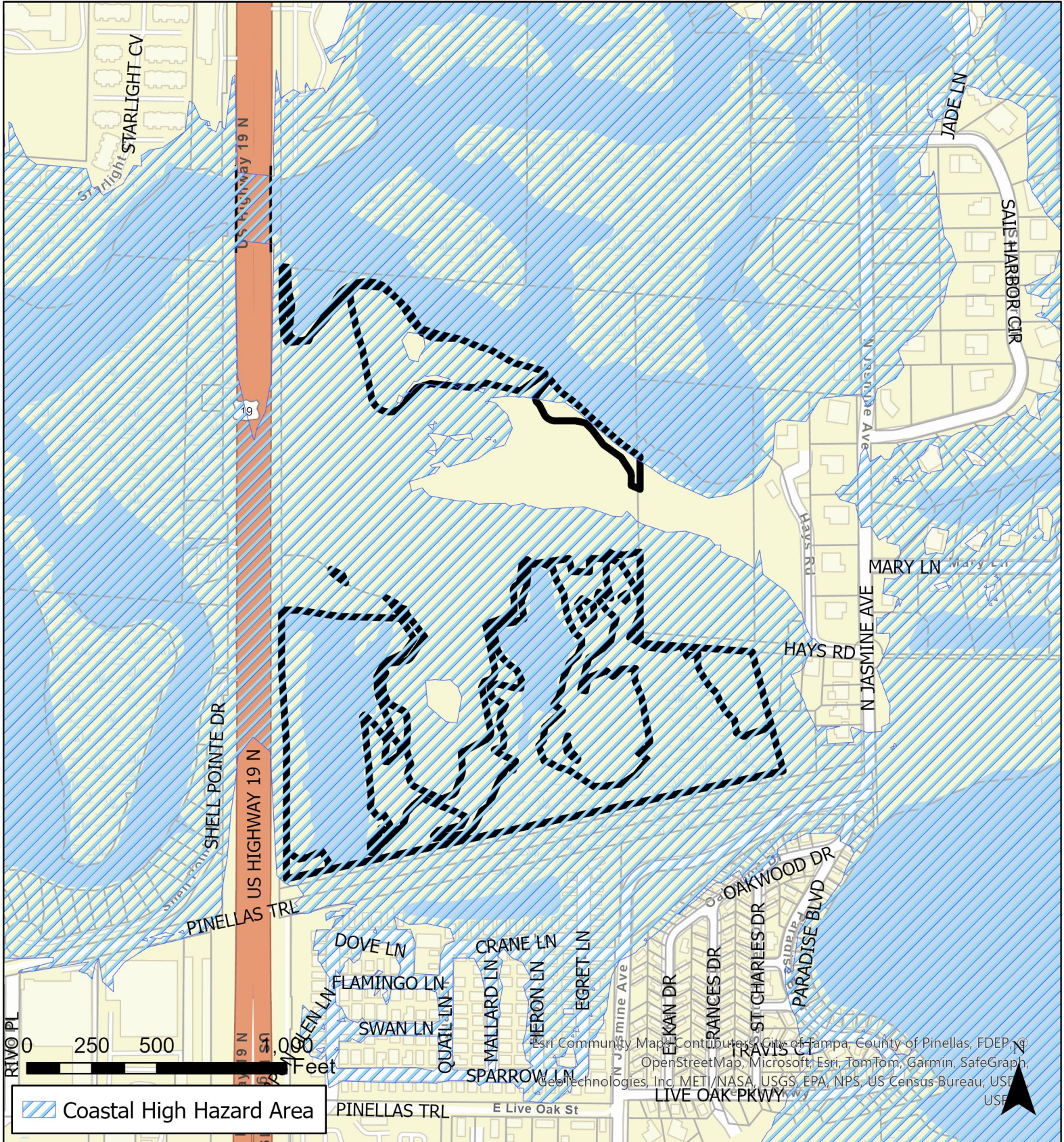


JURISDICTION: Tarpon Springs
AREA: 35.7 acres m.o.l.

FROM: Retail & Services, Office, and Preservation
TO: Preservation and Recreation/Open Space

Case CW24-20

Map 6: Coastal High Hazard Area



JURISDICTION: Tarpon Springs **FROM:** Retail & Services, Office, and Preservation
AREA: 35.7 acres m.o.l. **TO:** Preservation and Recreation/Open Space