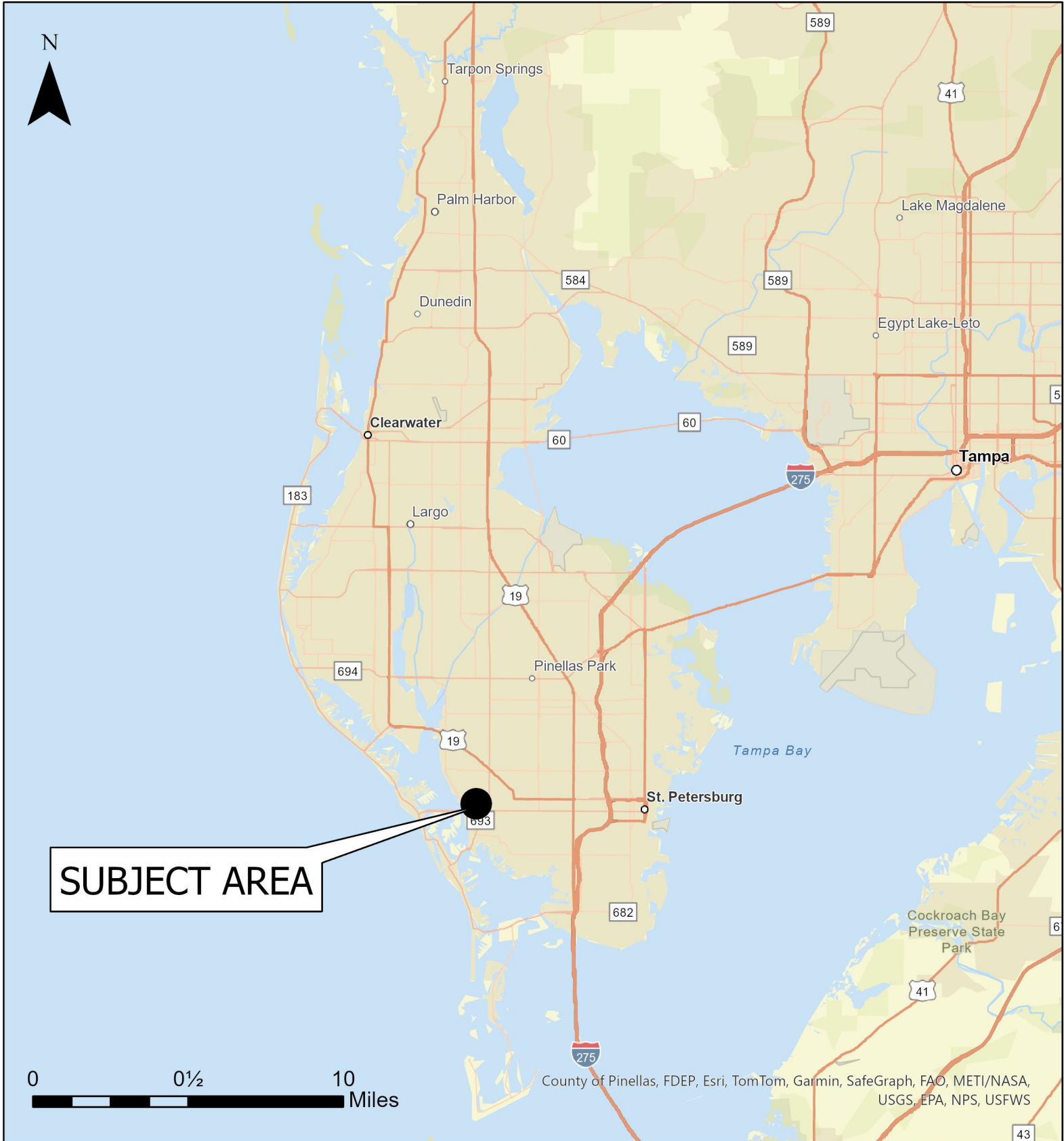


# Case CW24-09

## Map 1: Location Map



**JURISDICTION: St. Petersburg**

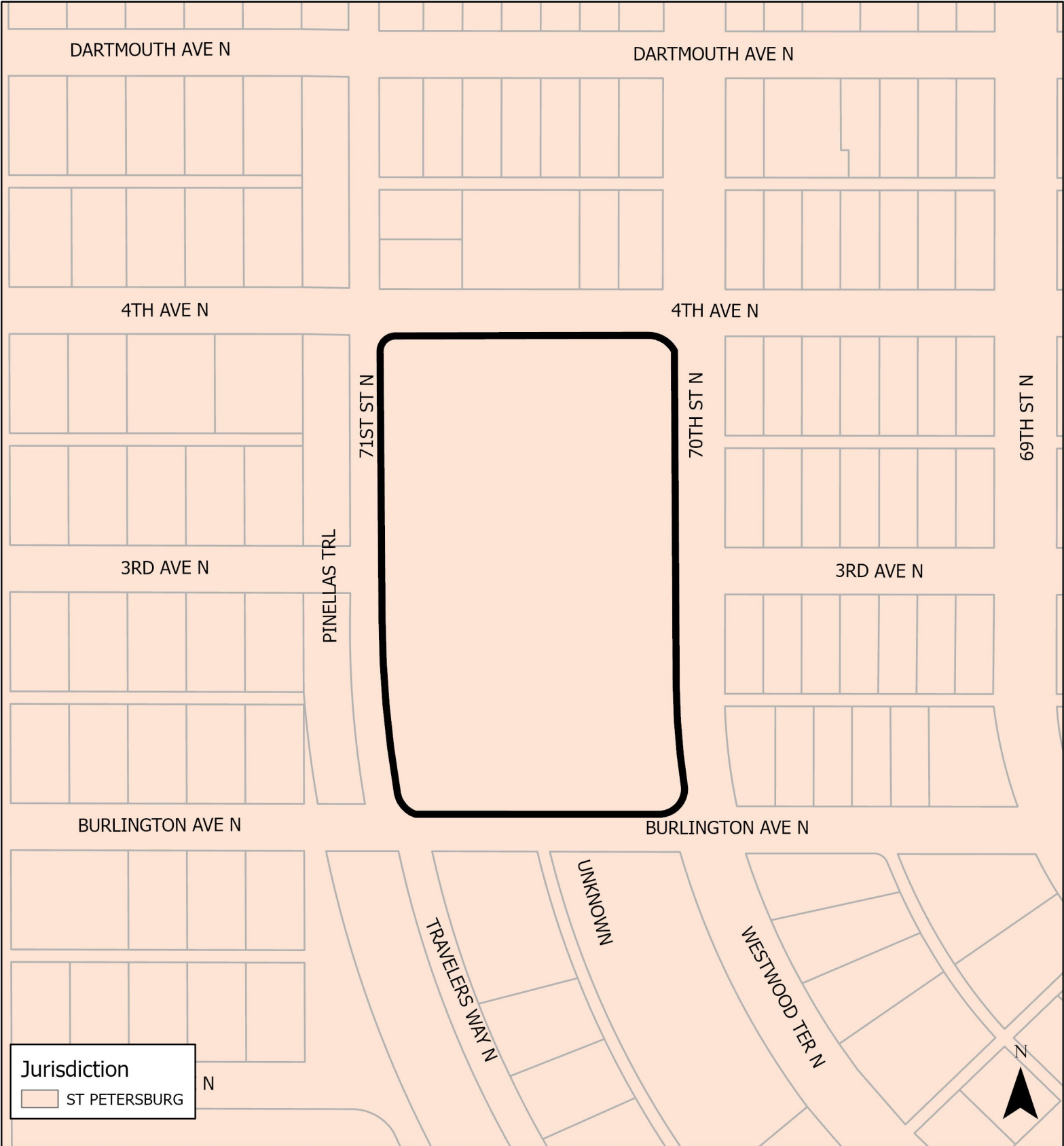
**FROM: Public/Semi-Public**

**AREA: 5.24 acres m.o.l.**

**TO: Residential Medium**

# Case CW24-09

## Map 2: Jurisdictional Map





# Case CW24-09

## Map 3: Aerial Map



**JURISDICTION:** St. Petersburg

**FROM:** Public/Semi-Public

**AREA:** 5.24 acres m.o.l.

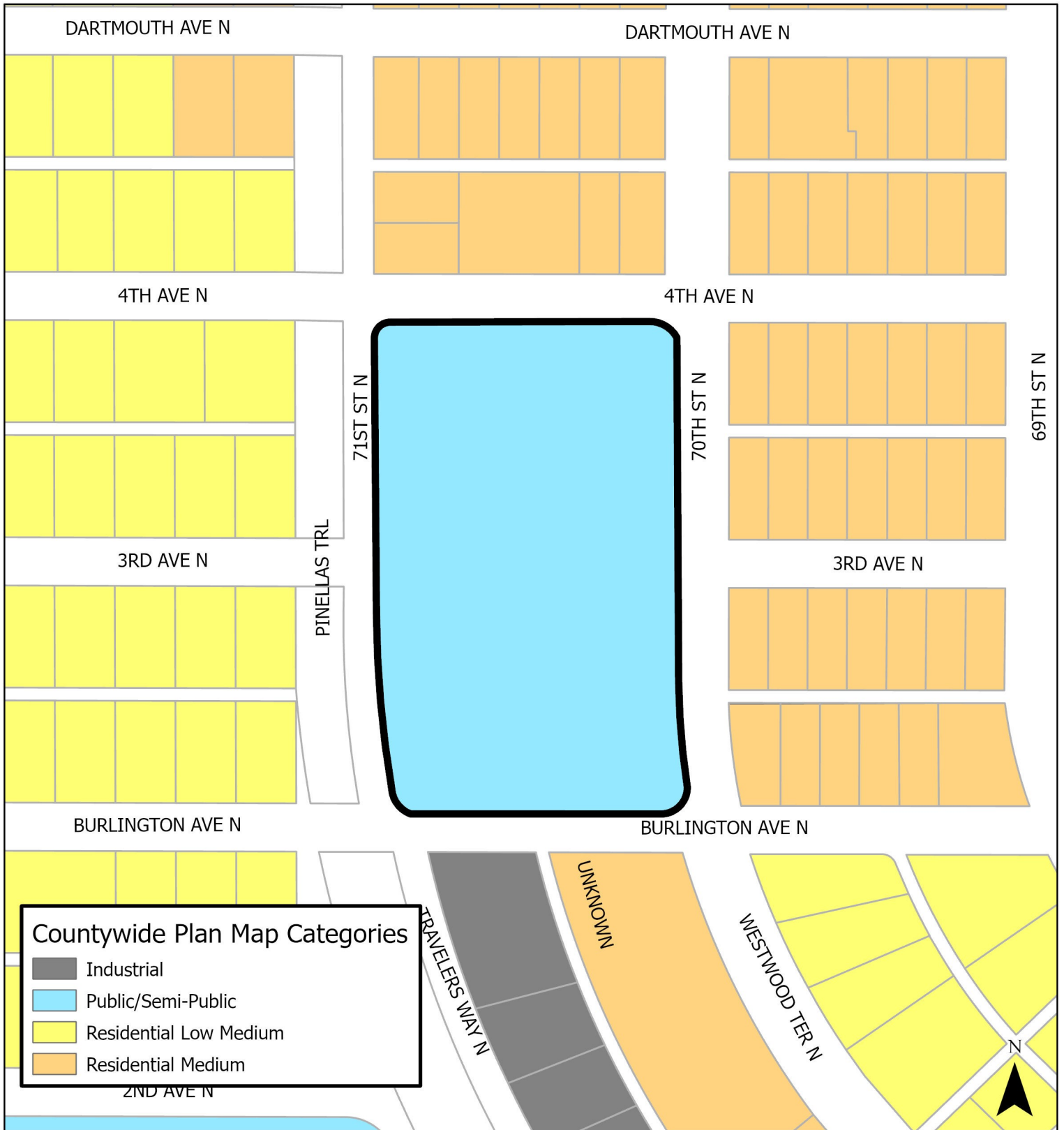
**TO:** Residential Medium





# Case CW24-09

## Map 4: Current Countywide Plan Map



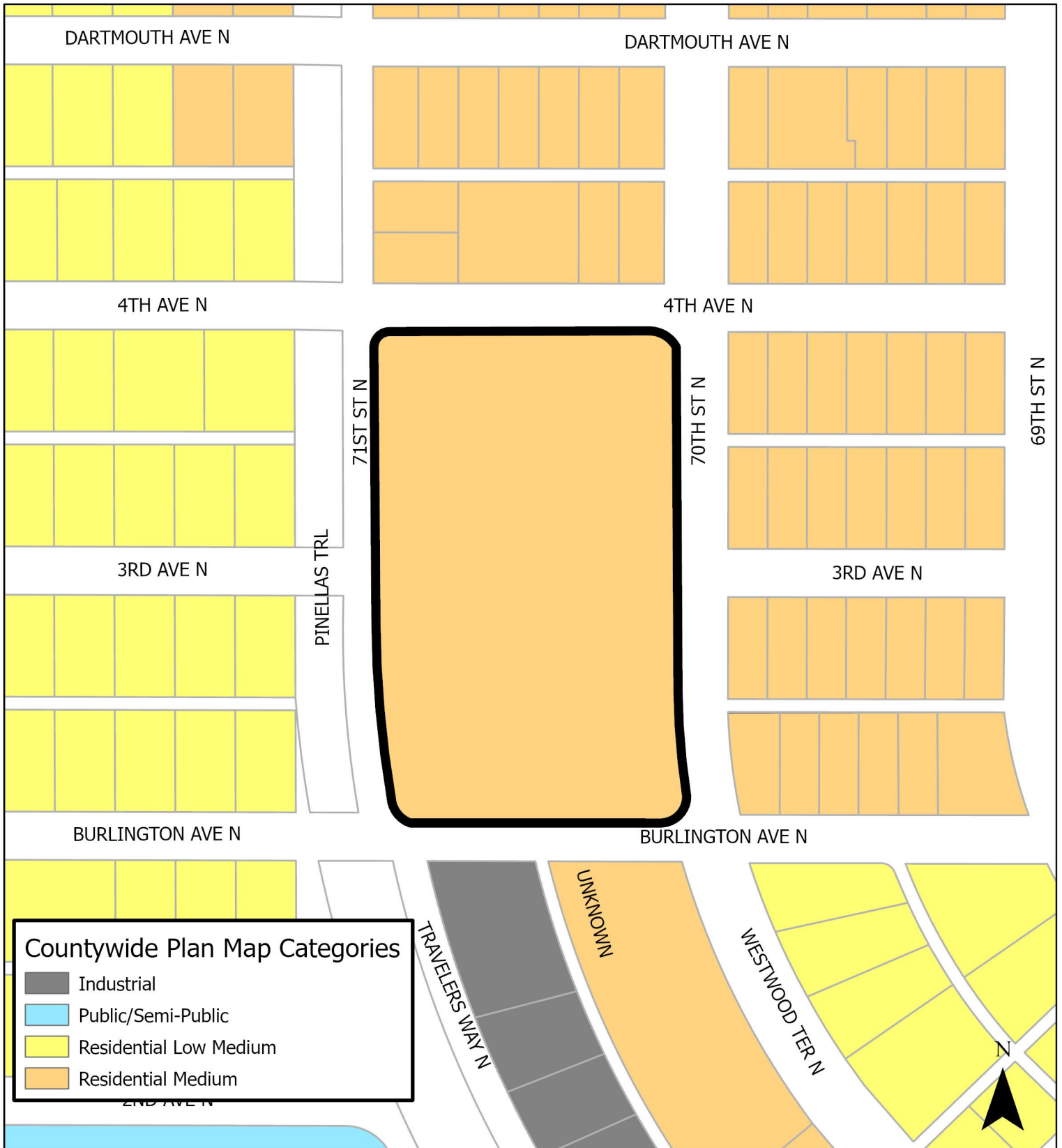
**JURISDICTION: St. Petersburg**

**FROM: Public/Semi-Public**

**AREA: 5.24 acres m.o.l**

**TO: Residential Medium**





**JURISDICTION: St. Petersburg**

**AREA: 5.24 acres m.o.l.**

**FROM: Public/Semi-Public**

**TO: Residential Medium**

0 65 130 260  
Feet

